



## RETAIL SPACE

# EAST MEADOW, NY

2501 HEMPSTEAD TURNPIKE

### SIZE

29,589 SF

### ASKING RENT

Upon Request

### POSSESSION

August 1, 2019

### NEIGHBORS

Panera Bread, Walmart, Stop & Shop, Chase Bank, CVS Pharmacy, Bank of America, 7-Eleven, Burger King, Walgreens, Verizon Wireless, AT&T, TD Bank, Moe's Southwest Grill, Texas Roadhouse, Dollar Tree, Retro Fitness, Sherwin-Williams, Aboff's Paints, Empress Diner

### COMMENTS

Located at the signalized intersection north east corner of Hempstead Turnpike and Newbridge Road

Over 47,000 vehicles passing this site daily

Strong access on Newbridge Road and Hempstead Turnpike

## CONTACT EXCLUSIVE AGENTS

### DOUG WEINSTEIN

dweinstein@ripcony.com

516.933.8880

### JOANNE ARGENTI

jargenti@ripcony.com

516.933.8880

**RIPCO**  
REAL ESTATE

100 Jericho Quadrangle  
Suite 120  
Jericho, NY 11753  
516.933.8880

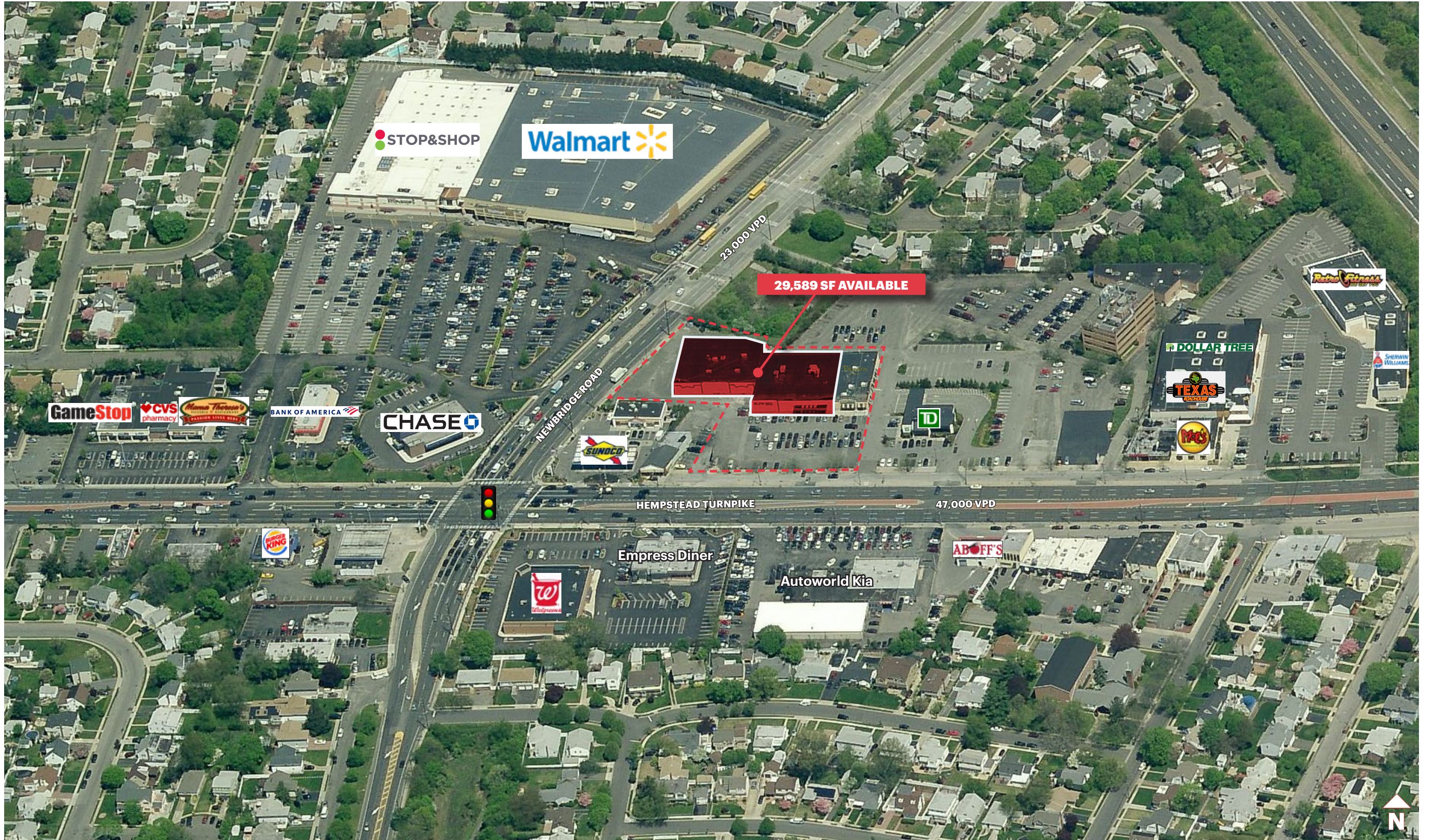
Please visit us at [ripcony.com](http://ripcony.com) for more information

This information has been secured from sources we believe to be reliable, but we make no representations as to the accuracy of the information. References to square footage are approximate. Buyer must verify the information and bears all risk for any inaccuracies.

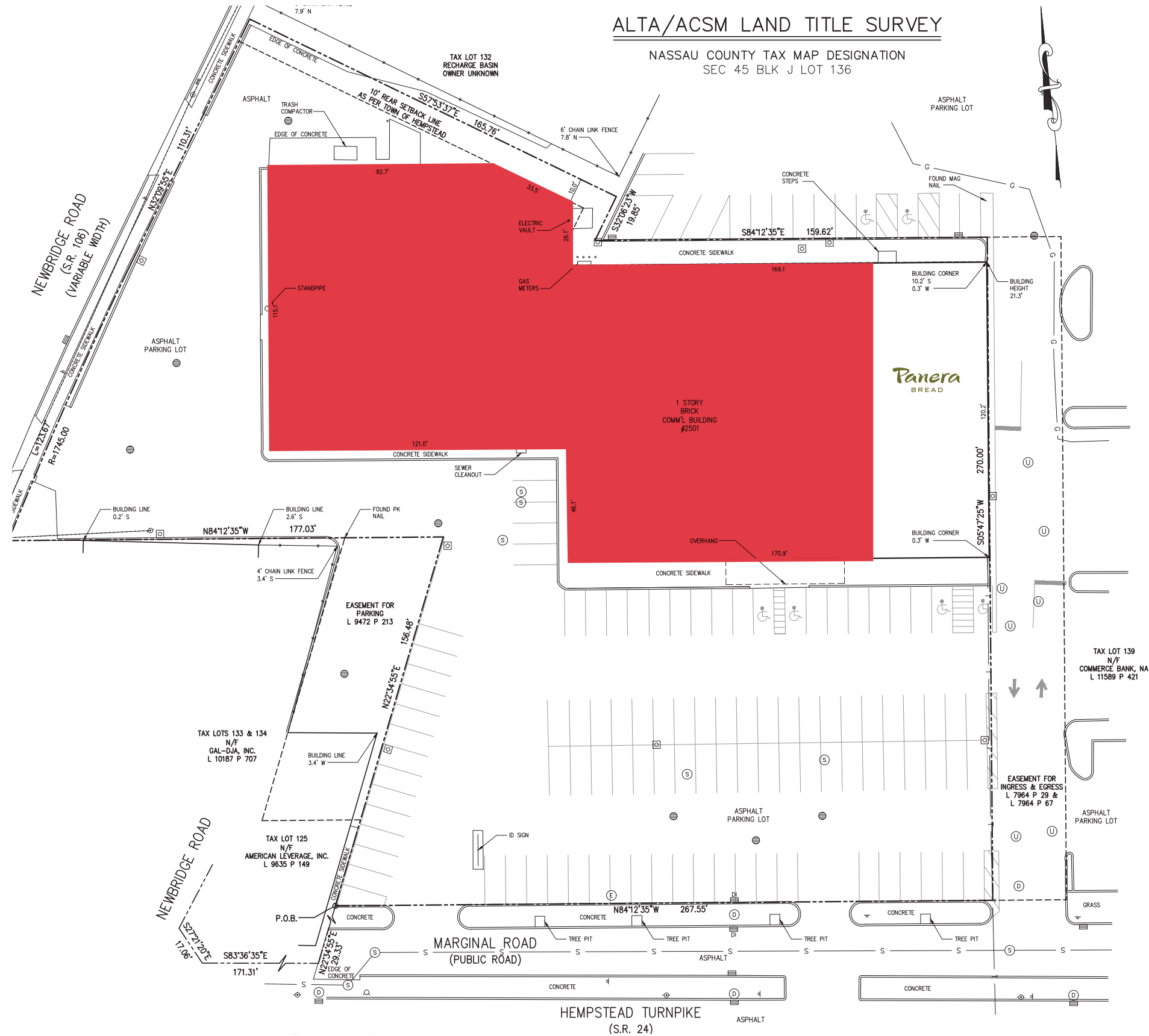
# MARKET AERIAL



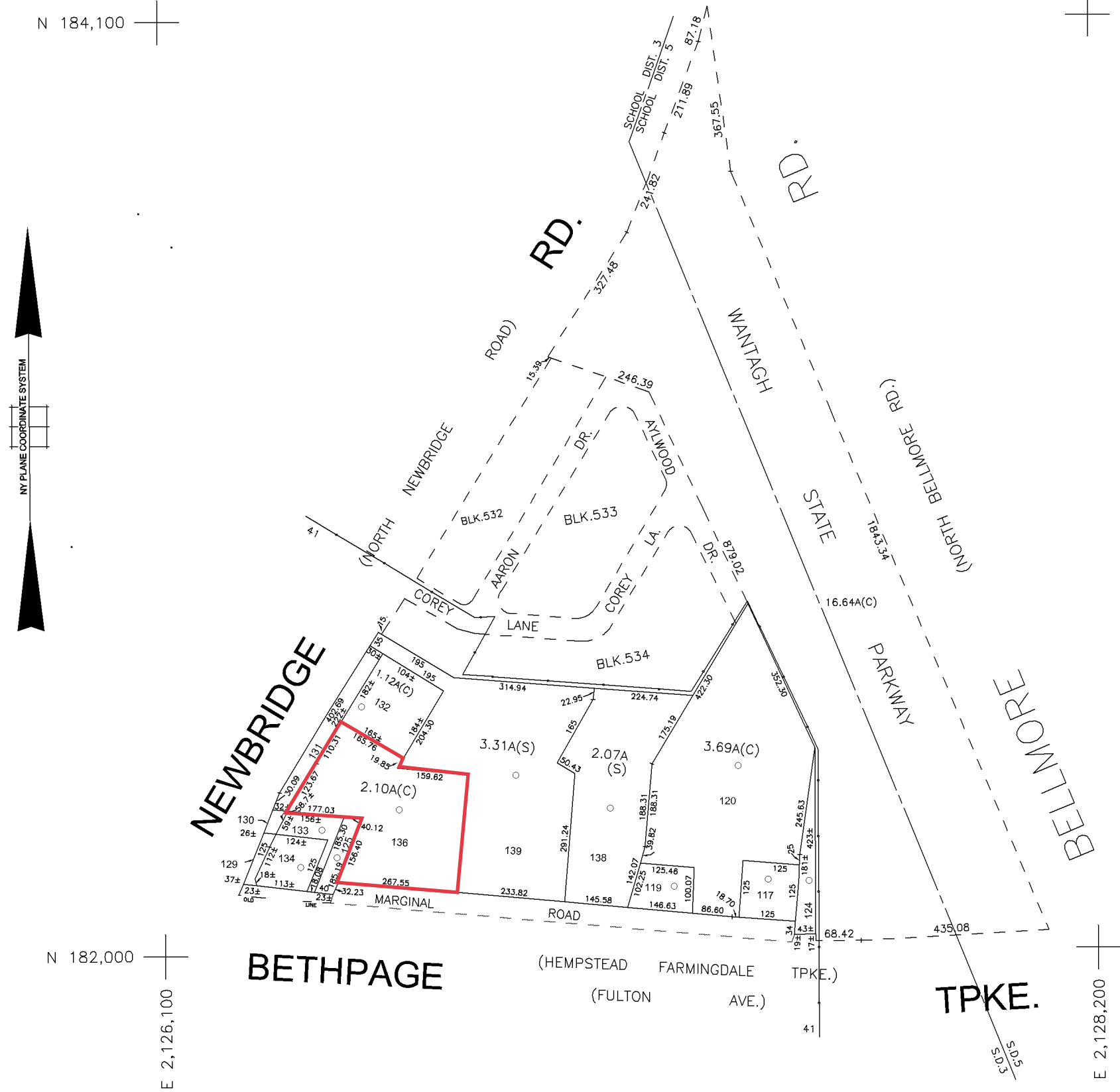
**AERIAL**



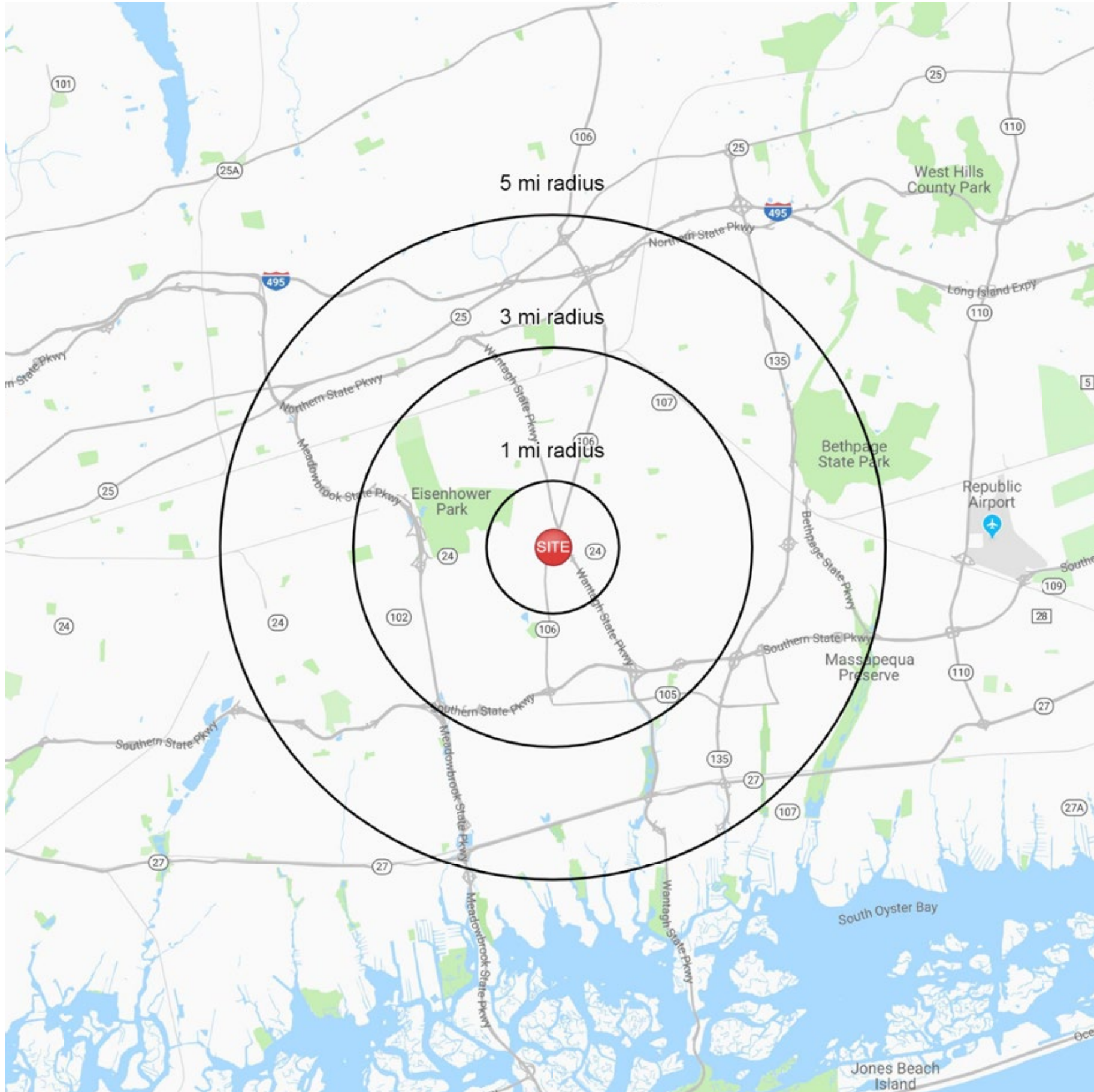
# SITE PLAN



TAX MAP



# AREA DEMOGRAPHICS



2501 HEMPSTEAD TURNPIKE EAST MEADOW, NEW YORK

## 1 MILE RADIUS

### POPULATION

24,377

### HOUSEHOLDS

7,575

### AVERAGE HOUSEHOLD INCOME

\$122,033

### MEDIAN HOUSEHOLD INCOME

\$104,828

### COLLEGE GRADUATES (Bachelor's +)

6,173 - 36.1%

### TOTAL BUSINESSES

1,031

### TOTAL EMPLOYEES

10,884

### DAYTIME POPULATION (w/ 16 yr +)

19,361

## 3 MILE RADIUS

### POPULATION

185,839

### HOUSEHOLDS

58,336

### AVERAGE HOUSEHOLD INCOME

\$135,600

### MEDIAN HOUSEHOLD INCOME

\$111,379

### COLLEGE GRADUATES (Bachelor's +)

48,788 - 37.8%

### TOTAL BUSINESSES

7,478

### TOTAL EMPLOYEES

82,366

### DAYTIME POPULATION (w/ 16 yr +)

139,453

## 5 MILE RADIUS

### POPULATION

507,279

### HOUSEHOLDS

159,743

### AVERAGE HOUSEHOLD INCOME

\$141,253

### MEDIAN HOUSEHOLD INCOME

\$112,094

### COLLEGE GRADUATES (Bachelor's +)

135,770 - 38.8%

### TOTAL BUSINESSES

23,029

### TOTAL EMPLOYEES

233,362

### DAYTIME POPULATION (w/ 16 yr +)

385,914

# AREA DEMOGRAPHICS

