

RETAIL SPACE

2101 CHURCH AVENUE

Located on the Northeast Corner of Church Avenue and East 21st Street

FLATBUSH

BROOKLYN | NY

Up To
9,000 SF*

Available for Lease
*Divisible



ARTIST'S RENDERING

SPACE DETAILS

LOCATION

Located on the Northeast Corner
of Church Avenue and East 21st Street

SIZE

Ground Floor Space 1	9,000 SF*
Basement	2,000 SF storage space below corner

*Divisible

TAXES/CAM

Pro Rata Share of Increases Over Base

CURRENTLY

Vacant

POSSESSION

To Be Arranged

COMMENTS

Base of Target store

Corner space just off of one of the busiest
corners in Brooklyn

4 Blocks from the Church Avenue Subways

Excellent Co-Tenancy

ESTIMATED DAYTIME POPULATION

1 mile 173,607

AVERAGE HOUSEHOLD INCOME

1 mile \$83,960

TOTAL HOUSEHOLDS

1 mile 68,866

TOTAL BUSINESSES

1 mile 4,834

TRANSPORTATION

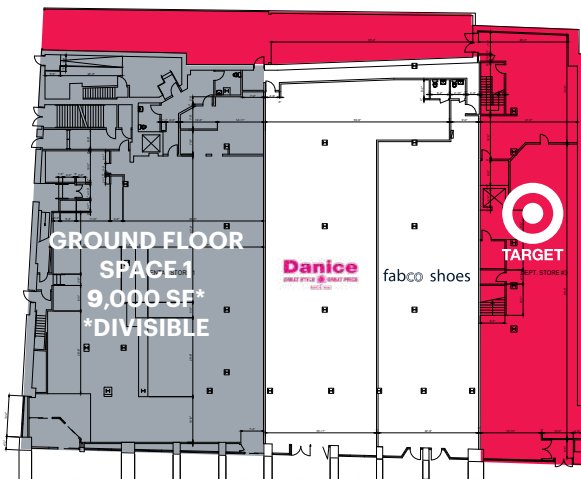
2019 Ridership Report

Church Avenue B Q
Annual 5,061,013
Weekday 16,251
Weekend 16,908

B35 B 35
Annual 8,159,658
Weekday 24,887
Weekend 33,627

B41 B 41
Annual 7,398,023
Weekday 22,553
Weekend 30,697

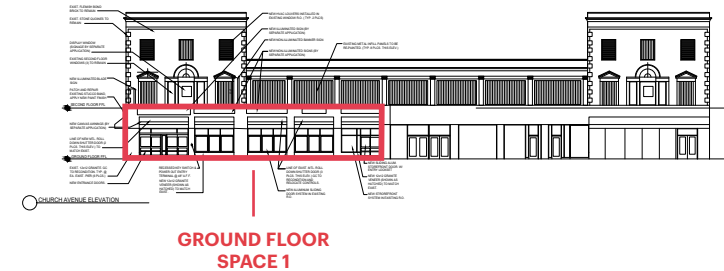
GROUND FLOOR



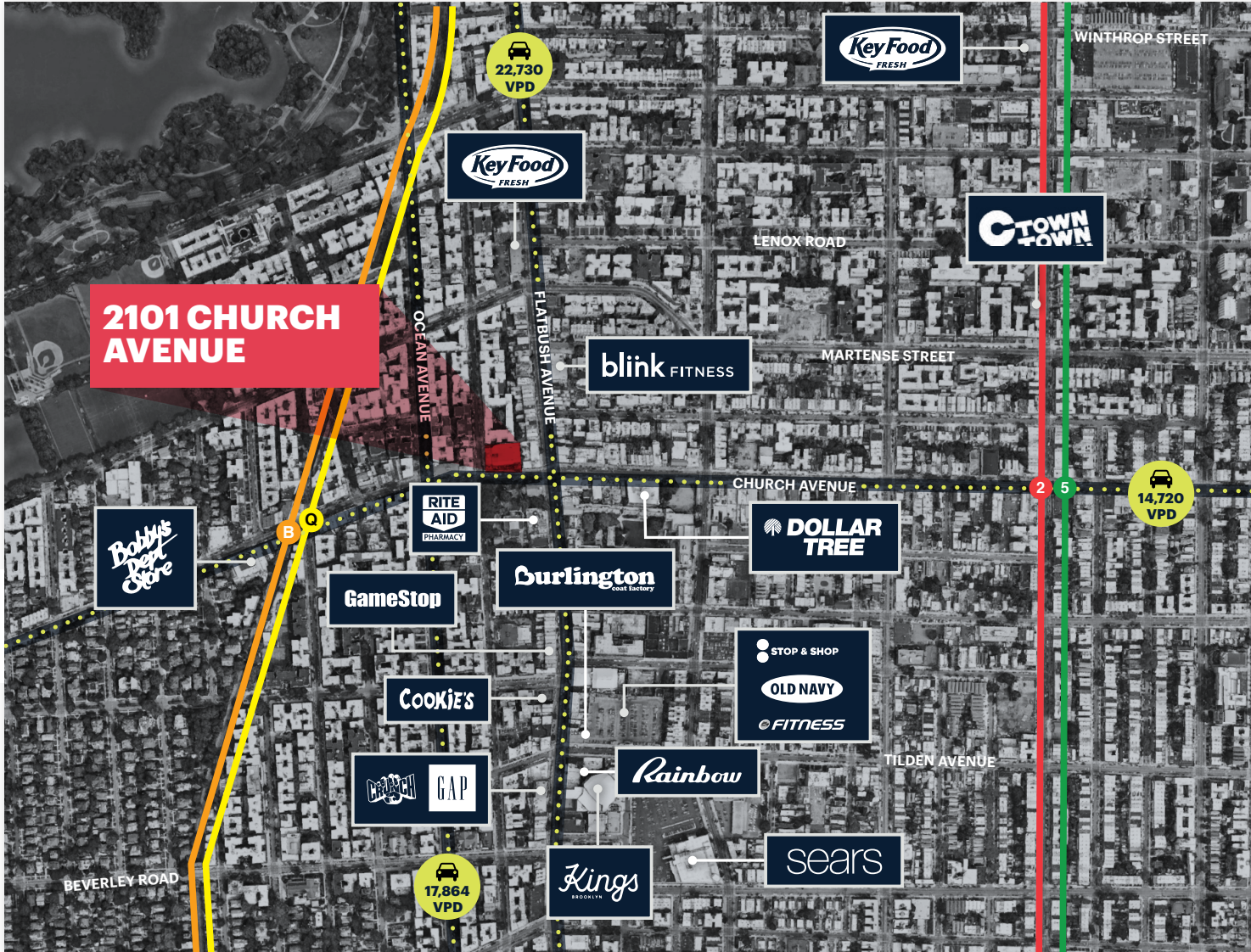
SECOND FLOOR



ELEVATIONS



AREA RETAIL



CONTACT EXCLUSIVE AGENTS

BEN WEINER

bweiner@ripcony.com
718.233.6565

JEFF HOWARD

jhoward@ripcony.com
516.933.3013

RIPCO
REAL ESTATE

32 Court Street
10th Floor
Brooklyn, NY 11201
718.233.6565

Please visit us at ripcony.com for more information

This information has been secured from sources we believe to be reliable, but we make no representations as to the accuracy of the information. References to square footage are approximate. Buyer must verify the information and bears all risk for any inaccuracies.