

**RETAIL SPACE**

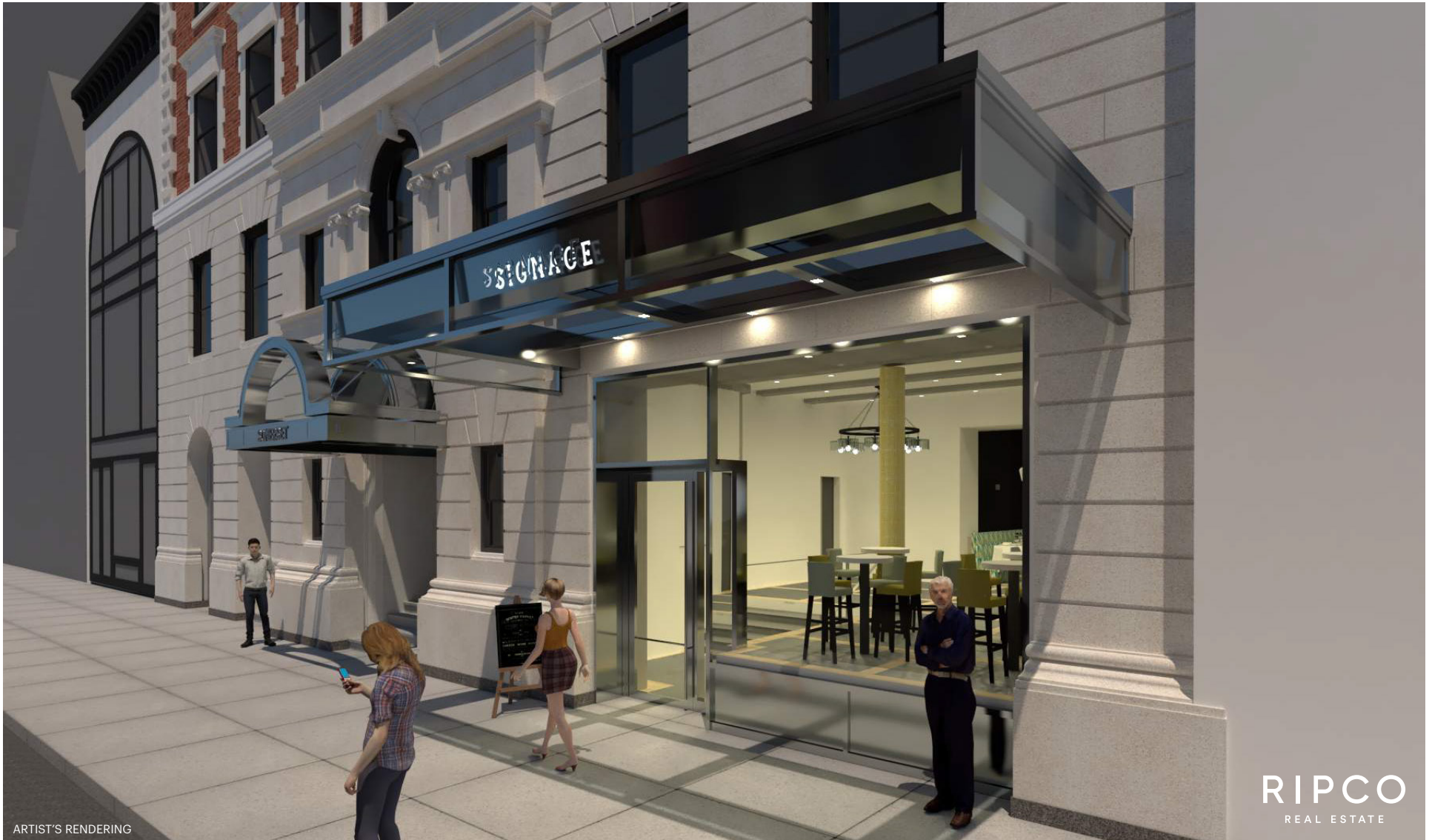
# 152 WEST 47TH STREET

Between Avenue of the Americas and Seventh Avenue

**MIDTOWN**

NEW YORK | NY

**3,822 SF**  
Available for Lease

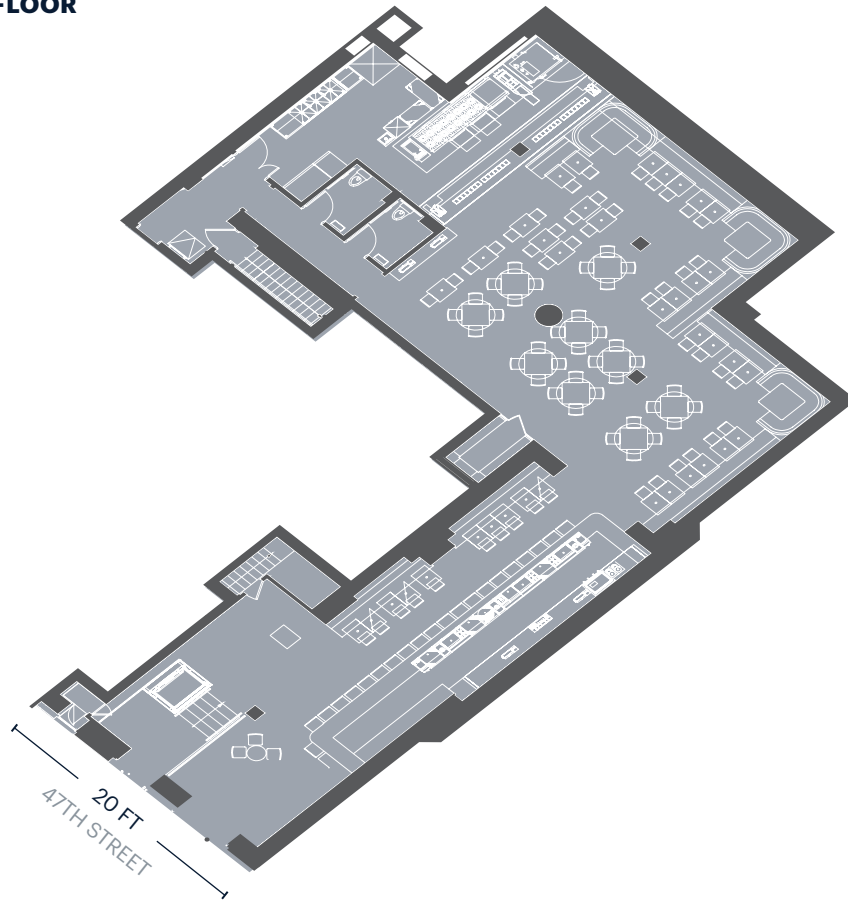


ARTIST'S RENDERING

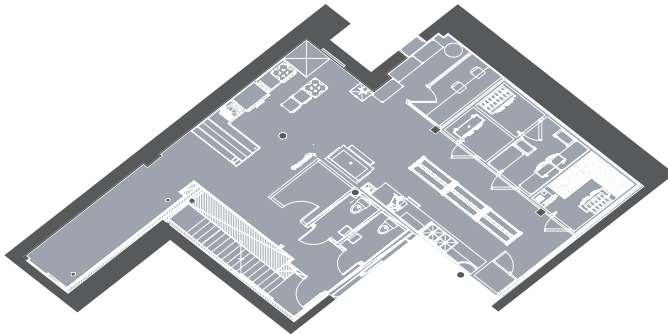
**RIPCO**  
REAL ESTATE

## SPACE DETAILS

### GROUND FLOOR 3,822 SF



### LOWER LEVEL 1,616 SF



### LOCATION

Between Avenue of the Americas and Seventh Avenues

### SIZE

Ground Floor 3,822 SF  
Lower Level 1,616 SF

### FRONTAGE

47th Street 20 FT

### POSSESSION

Arranged

### NEIGHBORS

Starbucks, Hershey's, NHL Store, Tender Steak & Sushi, Taco Dumbo, Palace Theater, Edition Hotel, Night Times Square Hotel

### COMMENTS

Times Square Flagship Restaurant Opportunity

Brand new storefront, venting, HVAC, white-box condition

New direct long term lease, no key money

### TRANSPORTATION

2018 Ridership Report

#### 49th Street

**N R W**

Annual 8,394,862  
Weekday 25,911  
Weekend 33,001

#### 47-50th Streets

**B D F M**

#### Rockefeller Center Station

Annual 8,394,862  
Weekday 25,911  
Weekend 33,001

## INTERIOR RENDERINGS



# AREA MAP



## CONTACT EXCLUSIVE AGENT

**JOSH SIEGELMAN**  
 jsiegelman@ripcony.com  
 212.750.6536

+ Coming Soon



150 East 58th Street  
 15th Floor  
 New York, NY 10155  
 212.750.6565

Please visit us at [ripcony.com](http://ripcony.com) for more information

This information has been secured from sources we believe to be reliable, but we make no representations as to the accuracy of the information. References to square footage are approximate. Buyer must verify the information and bears all risk for any inaccuracies.