

OFFICE BUILDING FOR LEASE

3303 E 13TH ST | TULSA, OK 74112



OFFERING SUMMARY

Lease Rate: \$12.58 SF/mo + Utilities

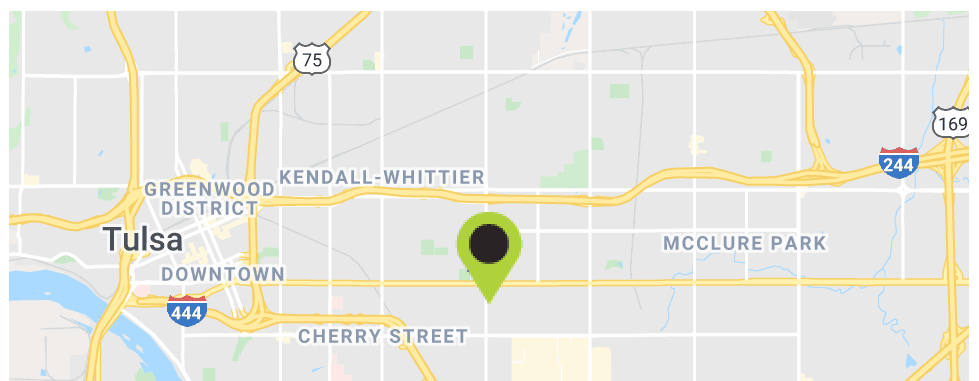
Building Size: 12,808 SF

Available SF: 2,670 SF

PROPERTY OVERVIEW

Beautifully finished second-floor office space available for sublease. Space is 2,670 square feet - includes 5 large offices, conference room, reception area, shared kitchen, and restrooms. Currently, the lease rate is \$12.58/sf plus utilities with annual increases. Separate exterior entrance via stairs to the second floor.

Existing lease expires 7/31/22



FOR MORE INFORMATION CONTACT:

KAYLA BILLINGSLY
BROKER ASSOCIATE
918.810.7921

kbillingsly@mcgrawcp.com

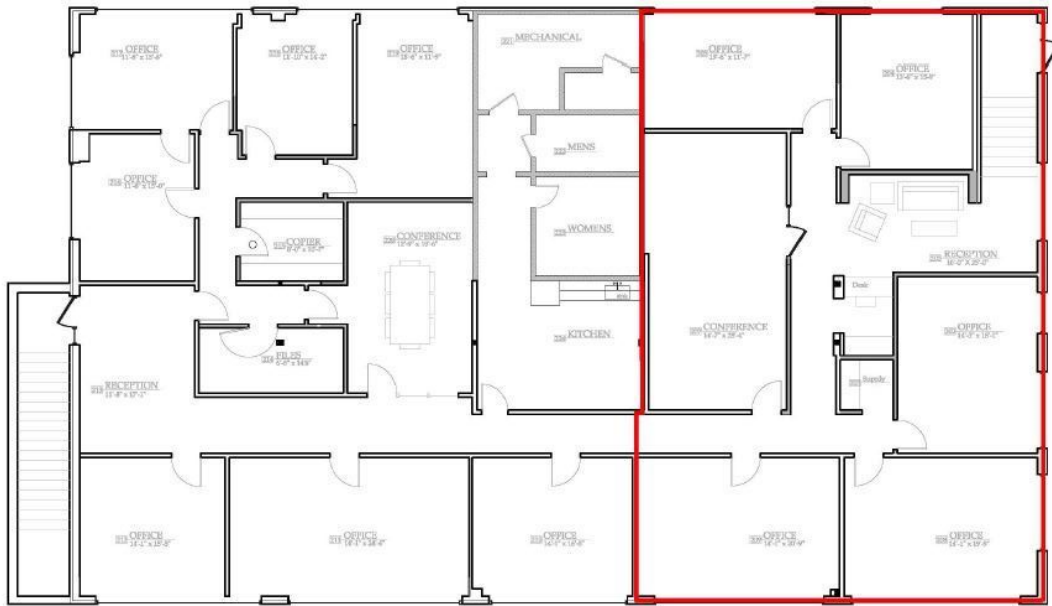
NEIL DAILEY, SIOR
BROKER ASSOCIATE
918.388.9588 | 918.853.7337

ndailey@mcgrawcp.com



OFFICE BUILDING FOR LEASE

3303 E 13TH ST | TULSA, OK 74112



FOR MORE INFORMATION CONTACT:

KAYLA BILLINGSLY
BROKER ASSOCIATE
918.810.7921

kbillingsly@mcgrawcp.com

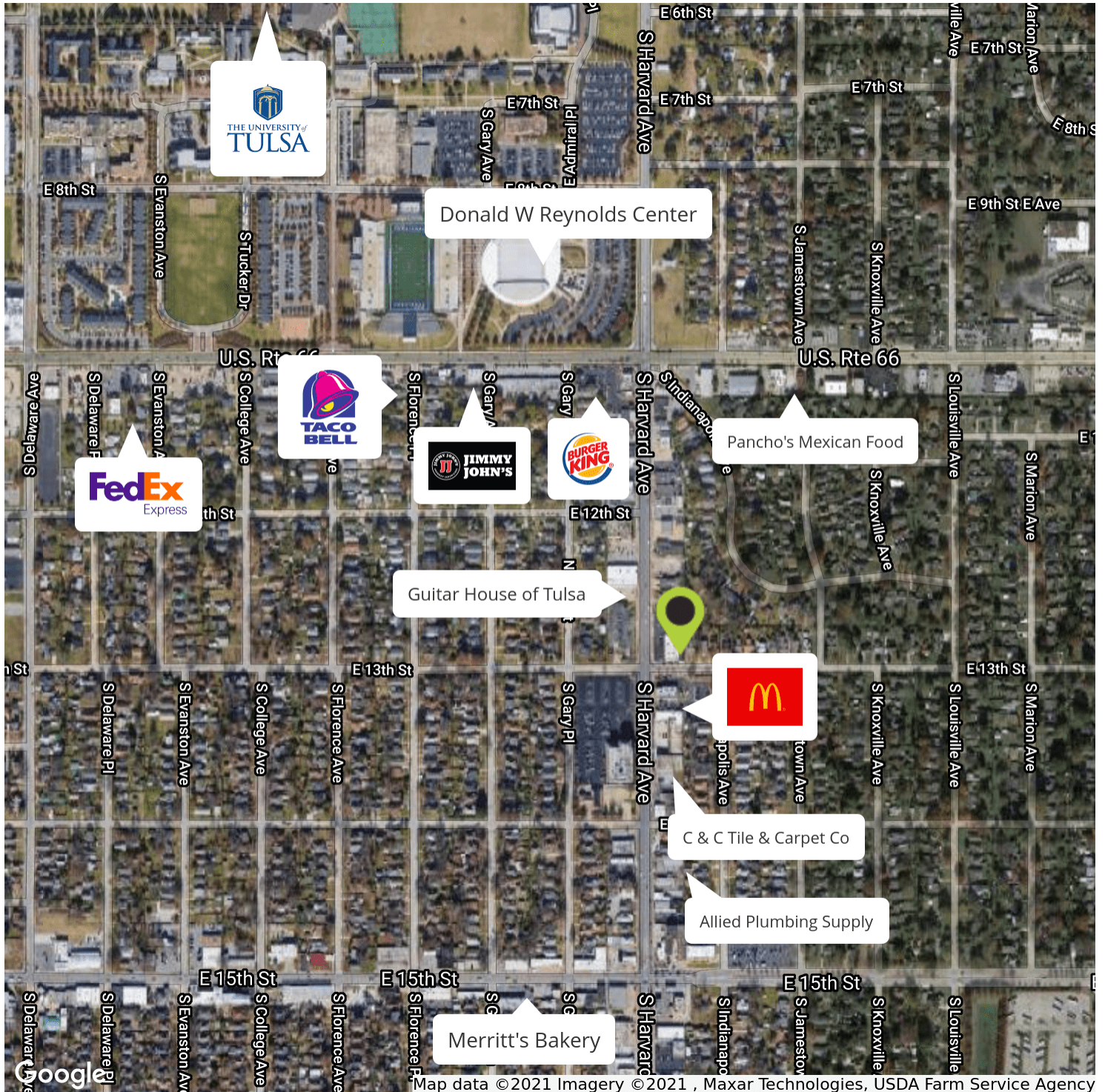
NEIL DAILEY, SIOR
BROKER ASSOCIATE
918.388.9588 | 918.853.7337

ndailey@mcgrawcp.com



OFFICE BUILDING FOR LEASE

3303 E 13TH ST | TULSA, OK 74112



FOR MORE INFORMATION CONTACT:

KAYLA BILLINGSLEY
BROKER ASSOCIATE
918.810.7921

kbillingsley@mcgrawcp.com

NEIL DAILEY, SIOR
BROKER ASSOCIATE
918.388.9588 | 918.853.7337

ndailey@mcgrawcp.com

