

50 WEST 23RD STREET

BETWEEN FIFTH & SIXTH AVENUES



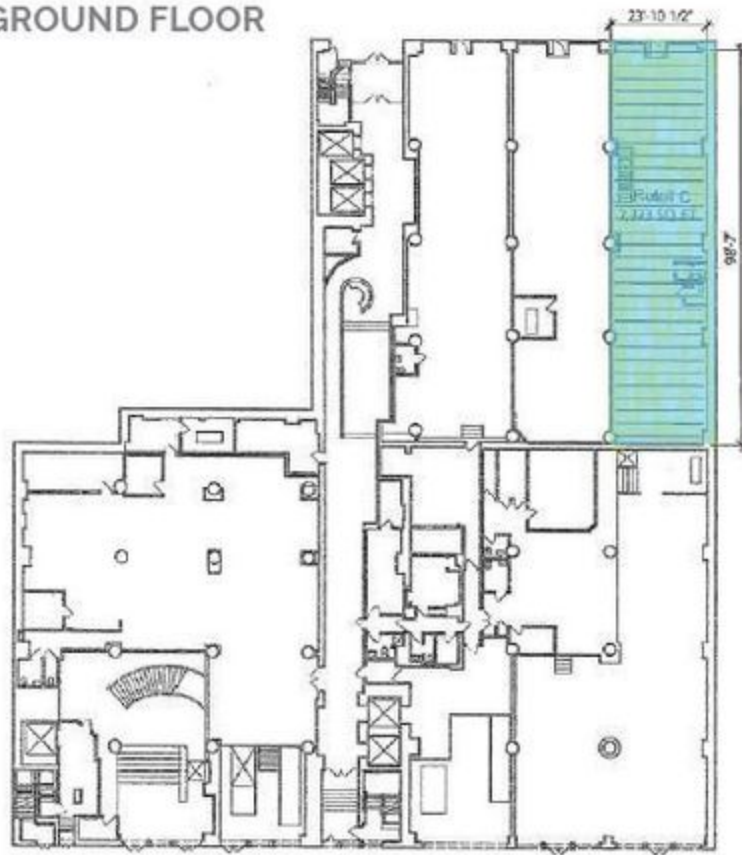
EXCLUSIVE LEASING PACKAGE

Seth Kessler | skessler@scg-retail.com | 646.664.0424

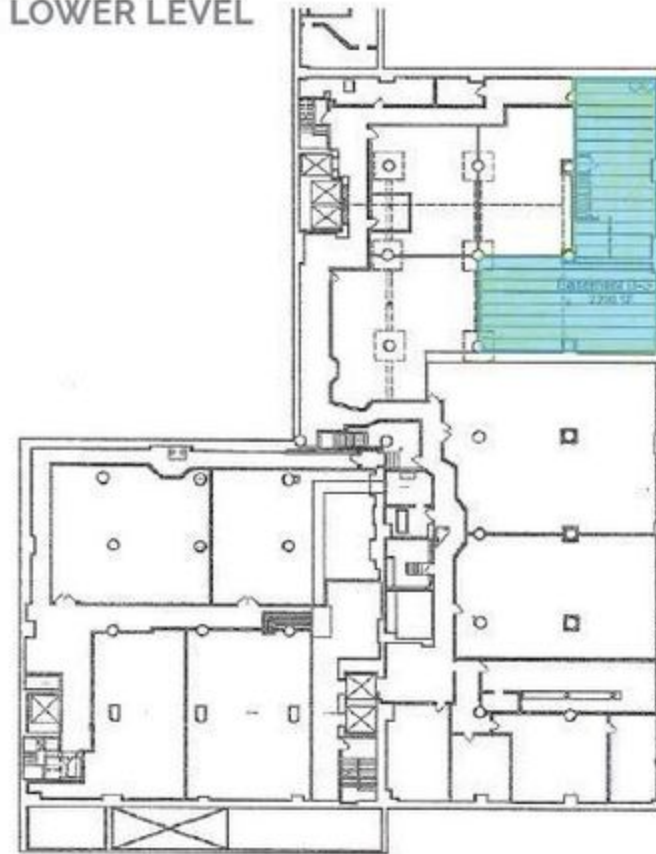
Ian Rice | irice@scg-retail.com | 646.664.0422



GROUND FLOOR



LOWER LEVEL



PROPERTY

- 2,323 SF on Ground Floor
- 2,298 SF on Lower Level
- Ceiling Height: 14'
- Frontage: 24'
- Possession: Immediate

TRANSPORTATION

- Steps from Madison Square Park and located on one of Manhattan's busiest blocks
- Direct access to the R & W trains at 23rd and Fifth Avenue, F & M trains at 23rd and Sixth Avenue, and 23rd Street PATH Station

NEIGHBORS

- Eataly, Madison Square Park, Home Depot, Shake Shack, Starbucks, Chick-fil-A, Trader Joe's, Rumble, Lifetime Fitness, CityMD, and Best Buy



SOULCYCLE



HILLSTONE

W 26th St



E 26th St



DAVID'S BRIDAL

W 25th St



wagamama



W 24th St



JOHNSTON & MURPHY

E 25th St



E 24th St

6th Ave



5th Ave



FLATIRON BUILDING

W 23rd St



SCHNIPPER'S

E 23rd St



W 22nd St



PAPER+SOURCE

E 22nd St



Michaels



True Value

E 21st St



CLUB MONACO

ANN TAYLOR



True Value

W 21st St



W 20th St



POTTERY BARN



COLE HAAN



E 20th St

Staples



BOQUERIA - Prawn & lobster



Theory

Flatiron District



EQUINOX

TUMI INTERMIX SEPHORA



Park Ave S

The image shows the storefront of a DataVision store. The building has a grey facade with a large glass entrance. Above the entrance is a white sign with the DataVision logo (a stylized 'dv' in red) and the word 'DataVision' in black. A red sign with the logo and name is also visible on the left side of the entrance. The glass reflects the surrounding environment. In the center of the glass, there is a white square logo for 'SCG Retail' with the text 'A Division of The Shopping Center Group' below it.

dv DataVision

**SCG
Retail®**

A Division of
The Shopping Center GroupSM

CONTACTS

Seth Kessler | skessler@scg-retail.com | 646.664.0424

Ian Rice | irice@scg-retail.com | 646.664.0422