

1,700 SF OFFICE FOR SALE ON 1.04 ACRES

227-229 STALLSVILLE LOOP, SUMMERVILLE, SC 29483



FOR SALE

PRESENTED BY:

Jon-Michael Brock
864.978.3704
JMBrock@Lee-Associates.com

R. Milton Thomas III, CCIM, SIOR
843.747.3999
MThomas@Lee-Associates.com

AERIAL



PROPERTY DESCRIPTION

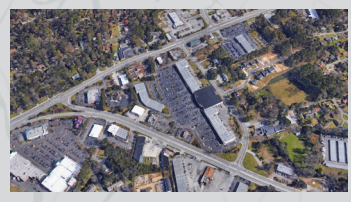
Approximately 1.04 acres on the corner of Stallville Loop and Limehouse Dr. The property is two tax parcels zoned CG in Dorchester County. There is a 3 bedroom/office and 1 bath house that is approximately 1,700 SF on the property. The most recent improvements are a new roof in 2008, a new HVAC system in 2012 and a new septic system in 2017. This is a great investment property with lots of value add opportunity.

AREA OVERVIEW

Stallville loop is located in the Rosehill Neighborhood of Summerville. It is just outside the downtown area and across from the Summerville Galaria, a busy shopping center located at a heavily trafficked intersection. The area is growing fast with several retail outlets, professional offices, and residential properties in the immediate area.



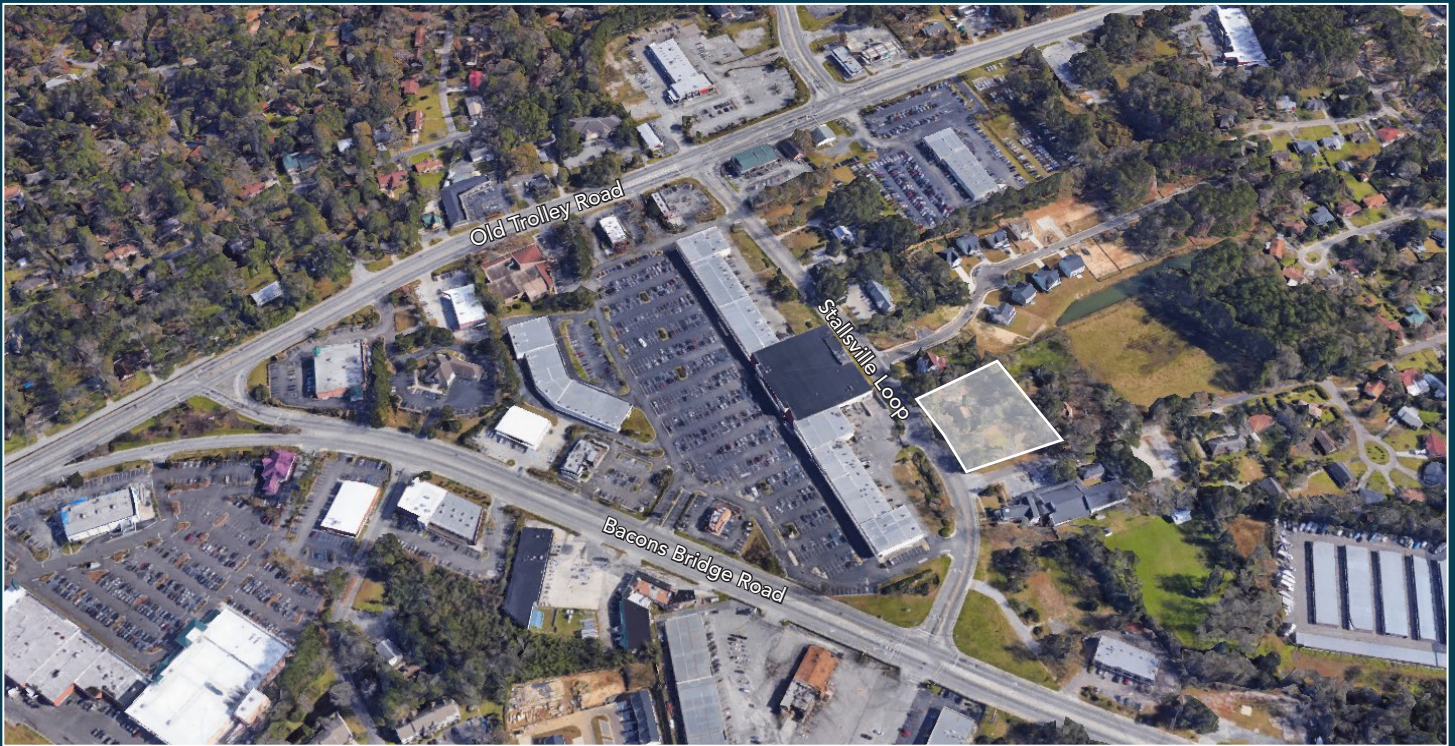
227-229 STALLVILLE LOOP
SUMMERVILLE, SC 29485



DRIVE TIMES:

DOWNTOWN	2.5 miles
I-26	4 miles
I-526	17 miles
I-95	38 miles





227-229 STALLSVILLE LOOP
SUMMERVILLE, SC 29843

