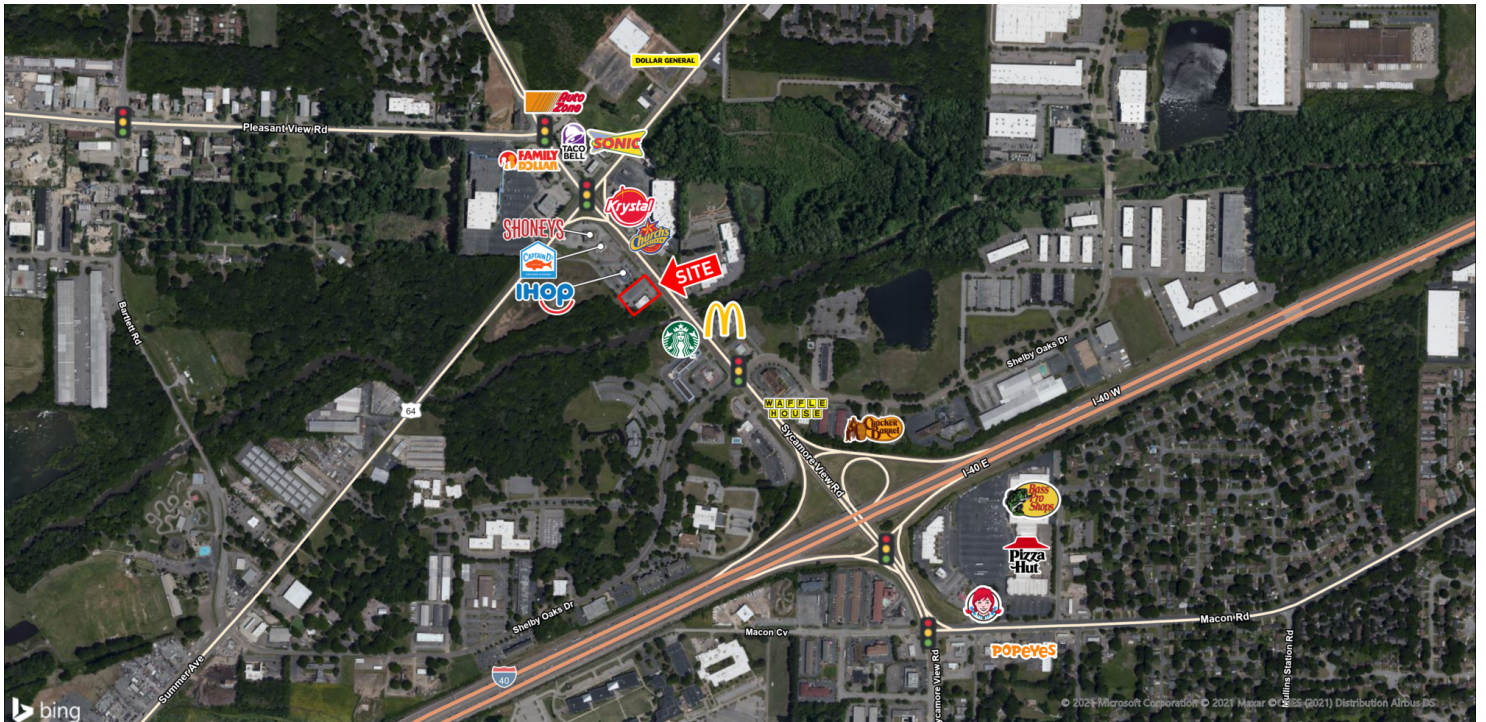


# FORMER RUBY TUESDAY

1653 Sycamore View Rd, Memphis, TN 38134

## EXECUTIVE SUMMARY



### LOCATION OVERVIEW

Freestanding restaurant building For Sale on Sycamore View just north of Interstate 40 in Memphis

### PROPERTY HIGHLIGHTS

- 5,686 SF restaurant building on 1.275 acres
- Sale Price: \$950,000
- Ample parking with 105 spaces
- Traffic Counts (AADT): Sycamore View 34,167, Summer Ave 20,291 and I-40 152,612

### DEMOGRAPHICS

	1 MILE	3 MILES	5 MILES
Population	5,205	69,615	196,700
Daytime Population	9,232	72,399	224,183
Households	2,076	25,518	77,542
Average HH Income	\$54,029	\$68,097	\$84,512

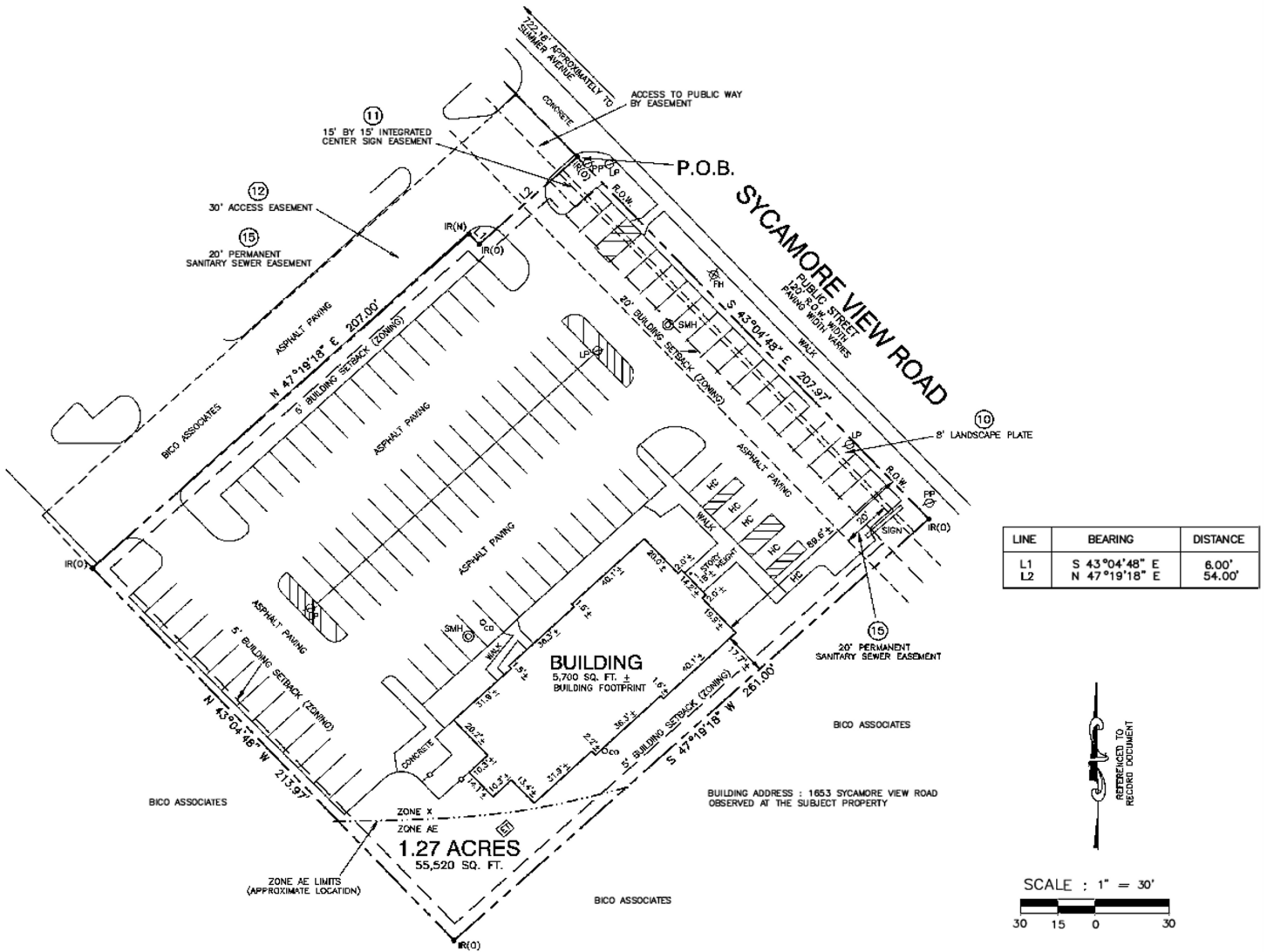
### EXCLUSIVE AGENT(S)

ROBERT SLOAN • robert.sloan@tscg.com • 901.334.5703

# FORMER RUBY TUESDAY

1653 Sycamore View Rd, Memphis, TN 38134

## SURVEY



### EXCLUSIVE AGENT(S)

ROBERT SLOAN • robert.sloan@tscg.com • 901.334.5703

