

# MADISON PLAZA

2524 Michigan Rd, Madison, IN 47250

## EXECUTIVE SUMMARY



### LOCATION OVERVIEW

Madison Indiana - Corner of Clifty Drive and Michigan Road



### PROPERTY HIGHLIGHTS

- +/- 26 Acres redevelopment at the main retail corner in market
- Area retailers: Wal-Mart Supercenter, Kroger, Lowe's, JCPenney, Goody's
- Traffic counts on Clifty Drive at Michigan Road - 20,589adt

### DEMOGRAPHICS

|                    | 5 MILES | 10 MILES | 20 MILES |
|--------------------|---------|----------|----------|
| Population         | 18,655  | 32,211   | 81,588   |
| Households         | 7,729   | 12,659   | 31,169   |
| Avg HH Income (\$) | 59,767  | 59,989   | 59,883   |

### EXCLUSIVE AGENT(S)

KEVIN SCHREIBER • kevin.schreiber@tscg.com • 502.874.5934  
 KEVIN MAYHUGH • kevin.mayhugh@tscg.com • 502.874.5933

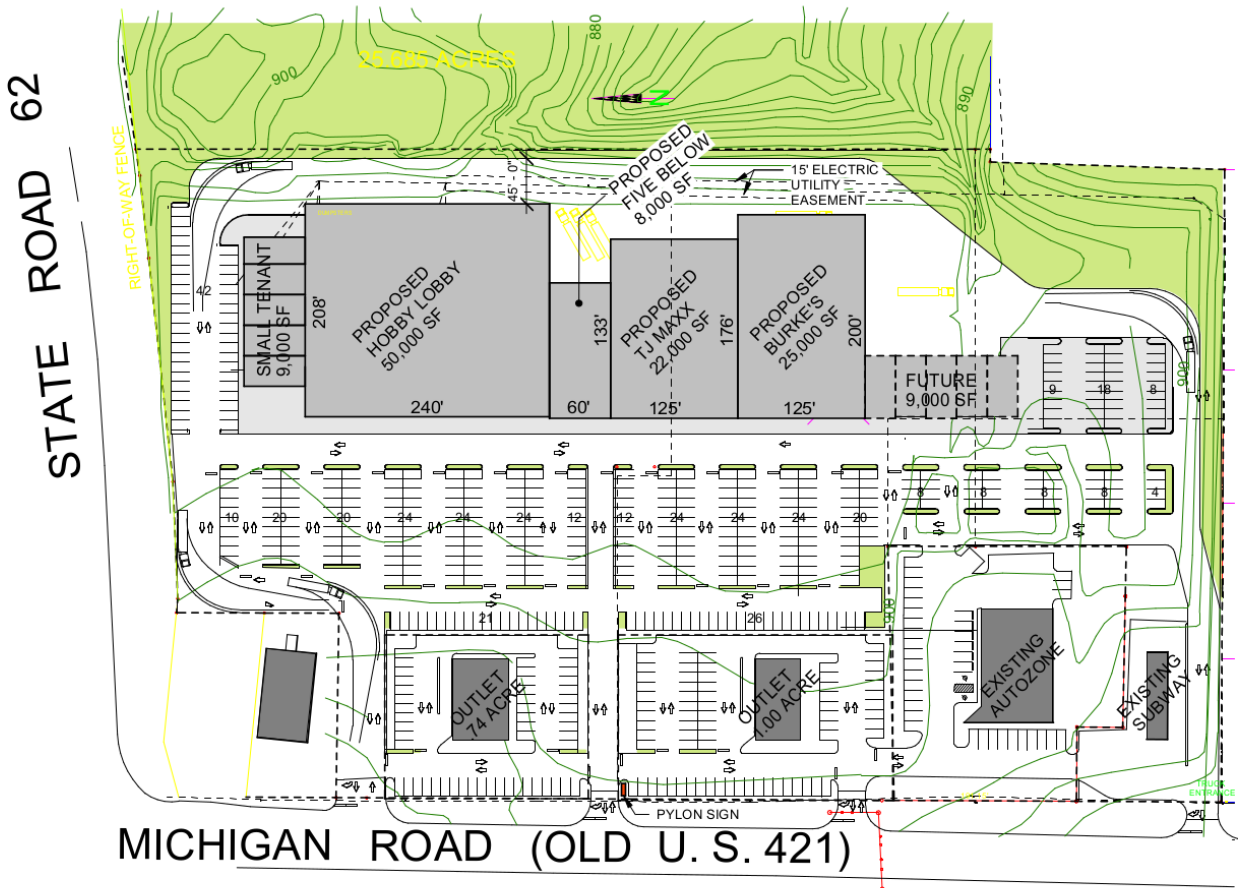
No warranty expressed or implied has been made as to the accuracy of this information, no liability assumed for errors or omissions.



# MADISON PLAZA

2524 Michigan Rd, Madison, IN 47250

## SITE PLAN



**OPTION 2 - OVERALL SITE DATA**  
 RETAIL SQUARE FOOTAGE:  
 PARKING PROVIDED:

118,000 SF  
 399 PROVIDED

### EXCLUSIVE AGENT(S)

KEVIN SCHREIBER • kevin.schreiber@tscg.com • 502.874.5934

KEVIN MAYHUGH • kevin.mayhugh@tscg.com • 502.874.5933

