

*SECOND FLOOR OFFICE SPACE FOR LEASE*  
**530 JOHNNIE DODDS BLVD., MOUNT PLEASANT, SC 29464**  
**2,666 SF | \$26.00 SF/YR (FULL SERVICE)**



 **LEE &  
ASSOCIATES**  
COMMERCIAL REAL ESTATE SERVICES

**PRESENTED BY:**

Hunter Hartley, CPSP  
843.203.1067  
HHartley@Lee-Associates.com

**PRESENTED BY:**

Reid Davis, CCIM, SIOR  
843.277.4326  
RDavis@Lee-Associates.com

**PRESENTED BY:**

Cameron Yost, CCIM  
843.203.1105  
CYost@Lee-Associates.com

# EXECUTIVE SUMMARY



## OFFERING SUMMARY

Address:	530 Johnnie Dodds Boulevard
City, State, Zip:	Mount Pleasant, SC 29464
TMS#:	514-00-00-234 & 235
Space Available SF:	2,666 SF
Rate:	\$26.00 SF/yr (Full Service)
Building Size:	11,000 SF
Class Of Building	A

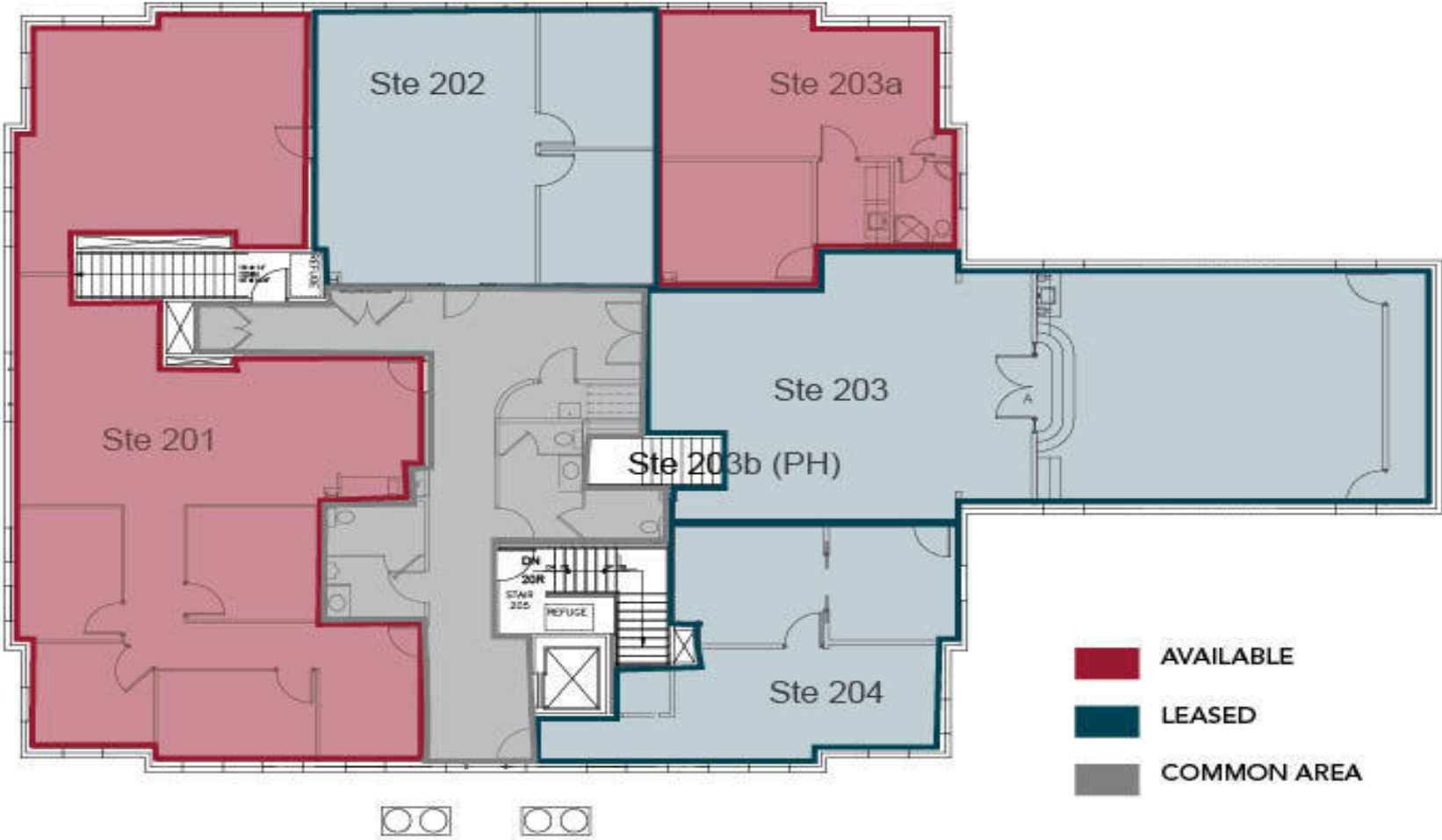
## PROPERTY OVERVIEW

2nd floor office space with excellent visibility on Johnnie Dodds Blvd. in Mount Pleasant! Class A interior finishes include wooden chair railing, high ceilings and private balcony facing the Ravenel Bridge. Unit 203 features a large conference room, reception area and private offices including an executive suite with private balcony on the 3rd floor.

## LOCATION OVERVIEW

Convenient location provides easy access to Highway 17, I-26, I-526 quickly connecting tenants to all of the Charleston MSA submarkets.

# FLOOR PLAN



# AERIAL MAP

