

**2420**

Mall Drive  
Charleston, SC

**FOR LEASE**

1,200 - 2,423 SF  
AVAILABLE

**CORPORATE SQUARE 1**

**CORPORATE SQUARE I** HAS UNPARALLELED  
ACCESS TO THE GREATER CHARLESON AREA.

**PETE HARPER, CCIM**

Principal  
(843) 329-0108  
PHarper@Lee-Associates.com

**REID DAVIS, CCIM, SIOR**

Managing Principal  
(843) 277-4326  
RDavis@Lee-Associates.com

**CAMERON YOST, CCIM**

Senior Associate  
(843) 814-7236  
CYost@Lee-Associates.com

 **LEE &  
ASSOCIATES**  
COMMERCIAL REAL ESTATE SERVICES

# PROPERTY OVERVIEW

## PROPERTY OVERVIEW

Corporate Square One is a two story office building conveniently located at the corner of Mall Drive and LaCross Road in North Charleston. The property offers Tenant's efficient suite options with full service amenities, complimentary parking and outstanding visibility.

## LOCATION OVERVIEW

Located in North Charleston with unparalleled access to both I-26 and I-526. The property is adjacent to Centre Pointe retail amenities and is in close proximity to Charleston International Airport and the North Charleston Coliseum and Convention Center.

### ADDRESS

2420 Mall Drive  
Charleston, SC 29406

### AVAILABLE SPACE

Suite 104: 2,145 SF  
Suite 207: 1,200-2,423 SF  
Suite 208: 1,200-2,423 SF

### LEASE RATE

\$19.75/SF  
FULL SERVICE

### PARKING

Free Surface  
Parking

### TMS #

472-00-00-054

### AVAILABLE DATE

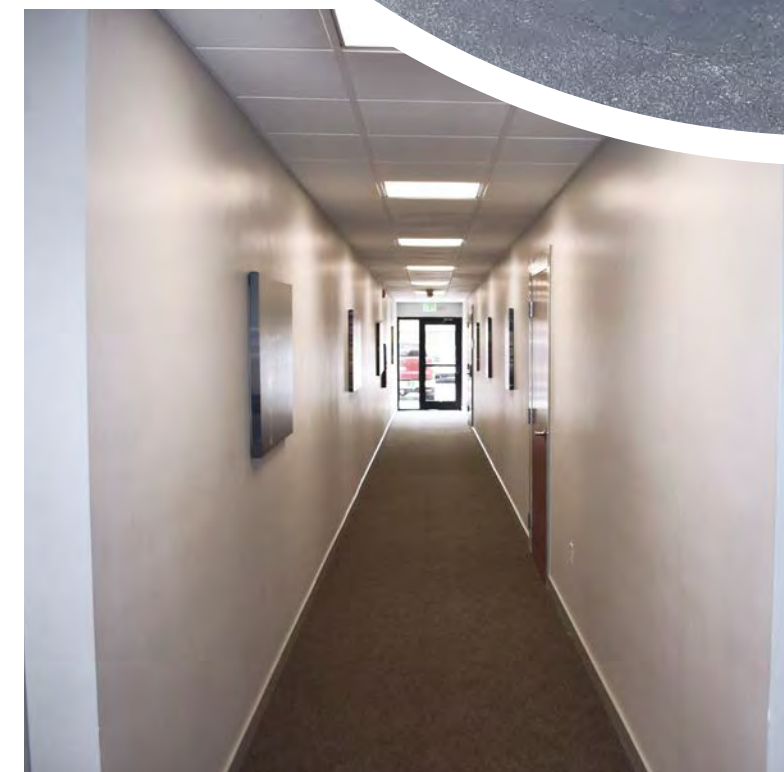
Suite 104: Immediately  
Suite 207: Immediately  
Suite 208: Immediately

### GROSS BUILDING AREA

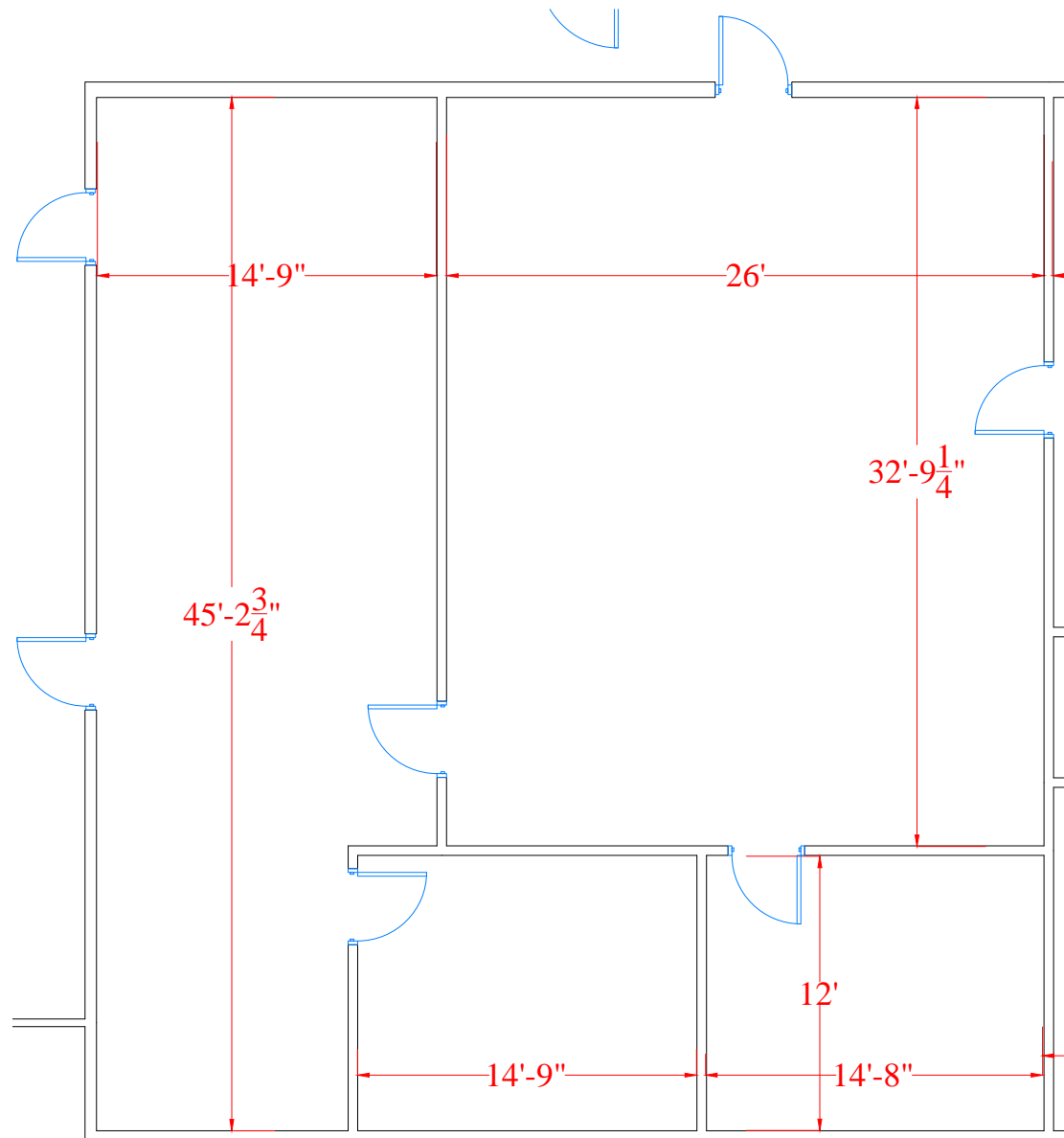
~34,000 RBA

### LOCATION ACCESS

Easy access to  
I-526 and I-26

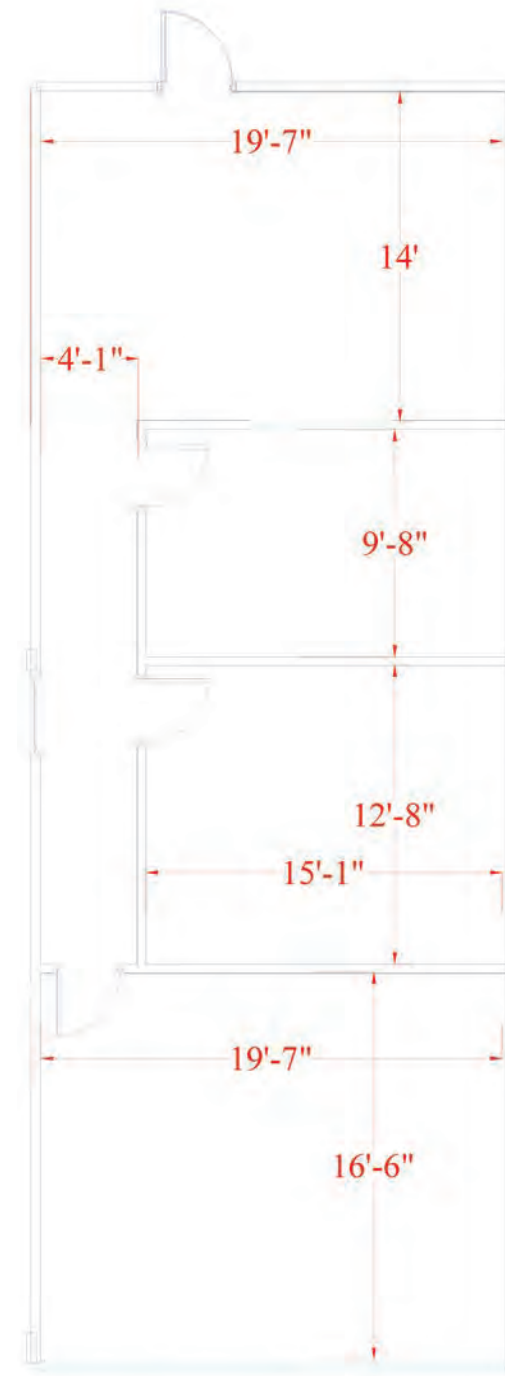


# FLOOR PLANS



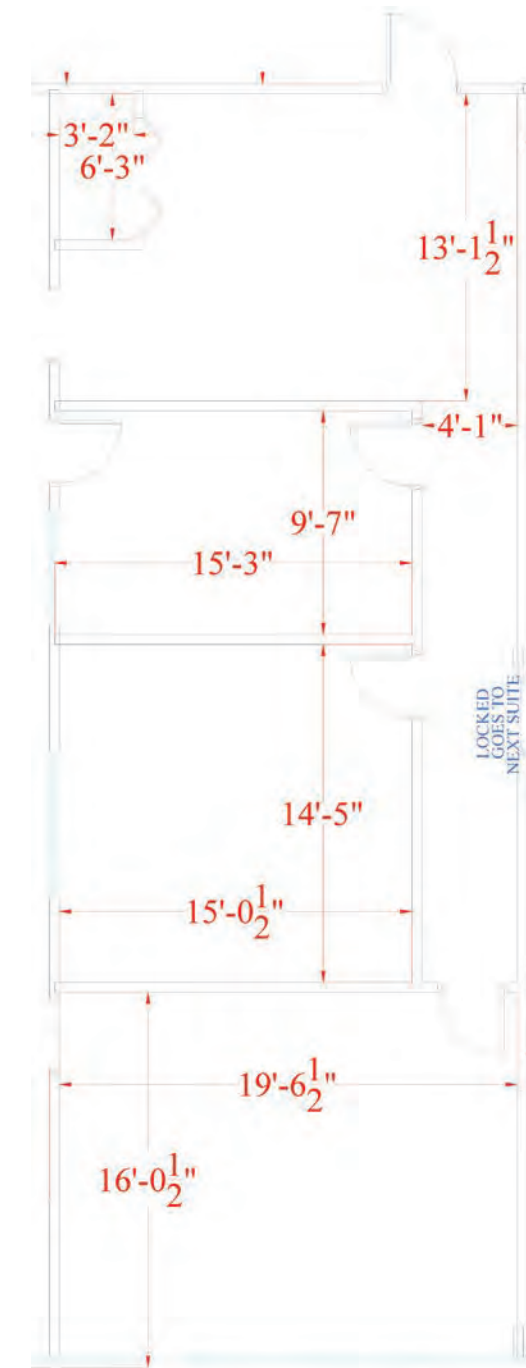
## SUITE 104:

**Suite Size:** 2,145 SF  
**Date Available:** Immediately  
**Amenities:**  
 Reception  
 Two (2) Offices  
 One (1) Large Conference Room



## SUITE 207:

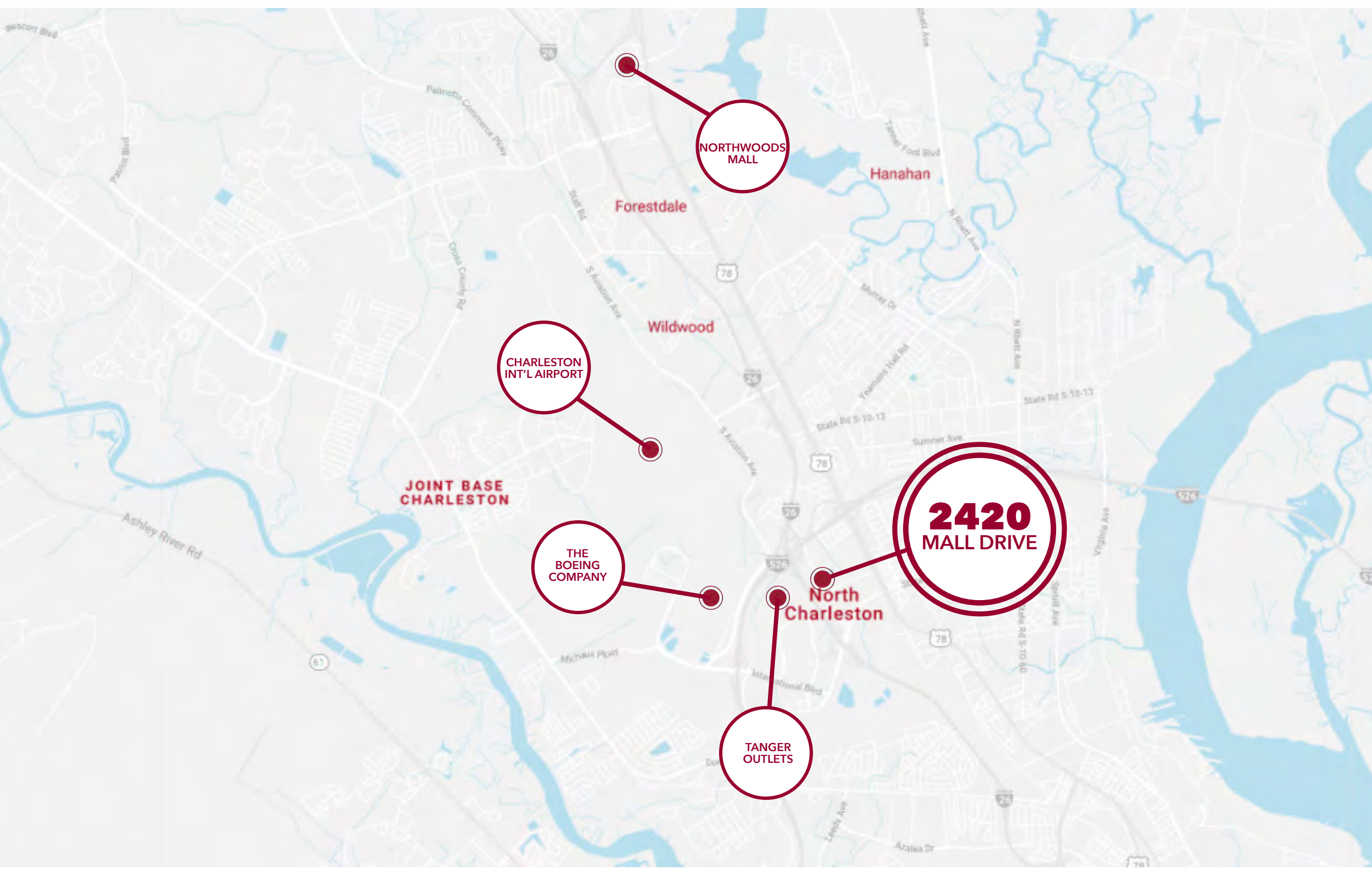
**Suite Size:** 1,200-2,423 SF  
**Date Available:** Immediately  
**Amenities:**  
 Reception  
 Two (2) Offices  
 One (1) Large Room  
 Can be combined with Suite 208



## SUITE 208:

**Suite Size:** 1,223-2,423 SF  
**Date Available:** Immediately  
**Amenities:**  
 Reception  
 Two (2) Offices  
 One (1) Large Room  
 Can be combined with Suite 207

# MARKET OVERVIEW



## DRIVE TIMES:

### DOWNTOWN CHARLESTON

7 Minutes

Yellow House Landing

### WEST ASHLEY

7 Minutes

### SUMMERVILLE

16 Minutes

### DANIEL ISLAND

7 Minutes

### MOUNT PLEASANT

11 Minutes

# 2420

MALL DRIVE  
CHARLESTON, SC

All information furnished regarding property for sale, rental or financing is from sources deemed reliable, but no warranty or representation is made to the accuracy thereof and same is submitted to errors, omissions, change of price, rental or other conditions prior to sale, lease or financing or withdrawal without notice. No liability of any kind is to be imposed on the broker herein.



**PETE HARPER, CCIM**  
Principal  
(843) 329-0108  
PHarper@Lee-Associates.com

**REID DAVIS, CCIM, SIOR**  
Managing Principal  
(843) 277-4326  
RDavis@Lee-Associates.com

**CAMERON YOST, CCIM**  
Senior Associate  
(843) 814-7236  
CYost@Lee-Associates.com