

PHENIX CORNERS OUTPARCEL AVAILABLE

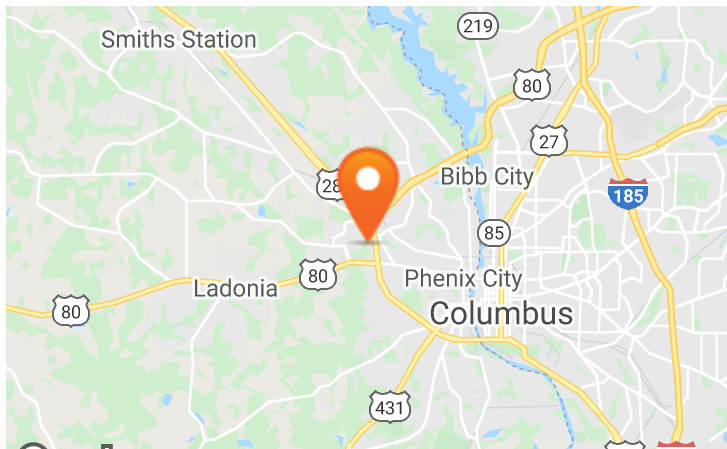
2003-2033 Highway 280, Phenix City, AL 36867

EXECUTIVE SUMMARY



LOCATION OVERVIEW

Phenix City is a suburb of Columbus, GA located in Lee and Russell counties in the State of Alabama. Although Phenix City has a population of 34,383, it is included in the greater Columbus MSA containing a population of 305,451. Phenix City is growing rapidly and has seen a population increase of 15% since 2010.



PROPERTY HIGHLIGHTS

- Phenix Corners is a 185,226 SF community shopping center centrally located in Phenix City, AL, on US Highway 280, with visibility to over 43,010 cars per day
- Parcel can potentially be subdivided
- Cross parking is available
- Call for more information

DEMOGRAPHICS

	3 MILES	5 MILES	10 MILES
POPULATION	4,418	43,727	100,280
HOUSEHOLDS	1,898	17,737	40,902
AVERAGE HH INCOME	\$49,456	\$54,557	\$57,928

EXCLUSIVE AGENT(S)

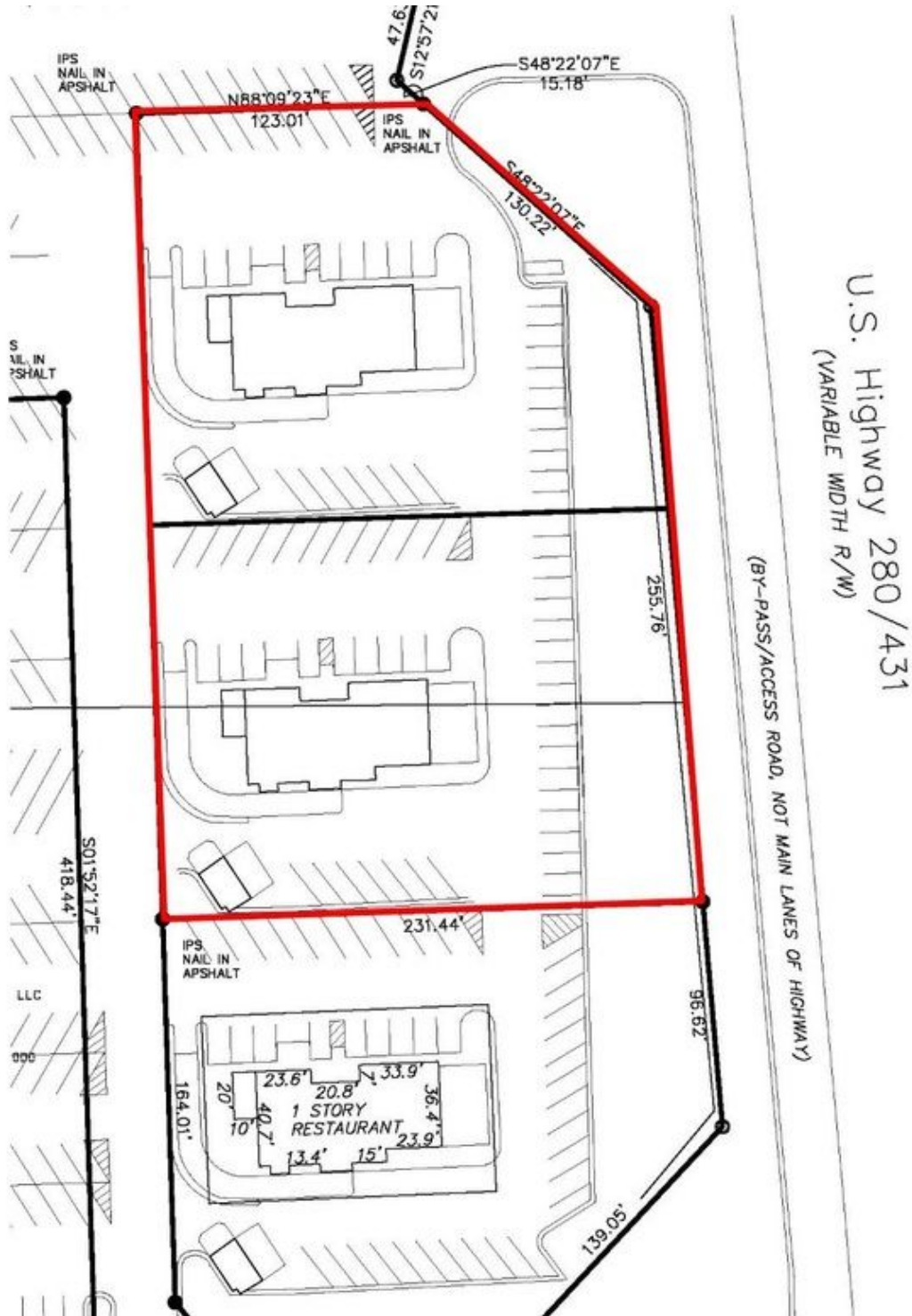
RAY JONES, CCIM • ray.jones@tscg.com • 334.332.8424
 ALEXANDER BARINEAU • alexander.barineau@tscg.com • 205.776.6715



PHENIX CORNERS OUTPARCEL AVAILABLE

2003-2033 Highway 280, Phenix City, AL 36867

ADDITIONAL PHOTOS



EXCLUSIVE AGENT(S)

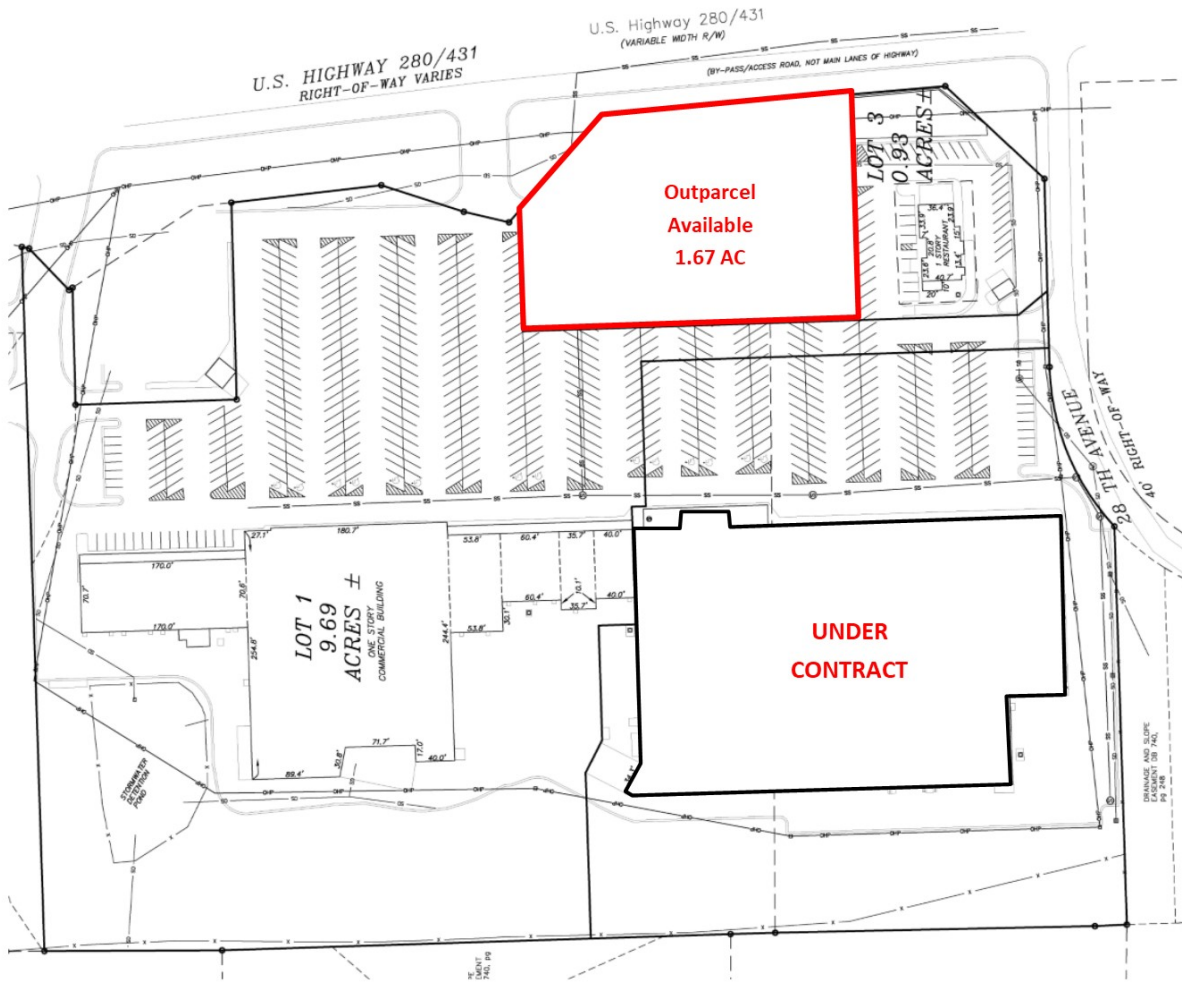
RAY JONES, CCIM • ray.jones@tscg.com • 334.332.8424

ALEXANDER BARINEAU • alexander.barineau@tscg.com • 205.776.6715

PHENIX CORNERS OUTPARCEL AVAILABLE

2003-2033 Highway 280, Phenix City, AL 36867

SITE PLAN



EXCLUSIVE AGENT(S)

RAY JONES, CCIM • ray.jones@tscg.com • 334.332.8424

ALEXANDER BARINEAU • alexander.barineau@tscg.com • 205.776.6715





© 2019 TSCG. All Rights Reserved. This map was produced using data from private and government sources deemed to be reliable. The information herein is provided without representation or warranty. Logos are for identification purposes and may be trademarks of their respective companies.

Source: Esri, DigitalGlobe, GeoEye, Earthstar Geographics, CNES/Airbus DS, USDA, USGS, AeroGRID, IGN, and the GIS User Community

Phenix City, Alabama

Major Retail



March 2019