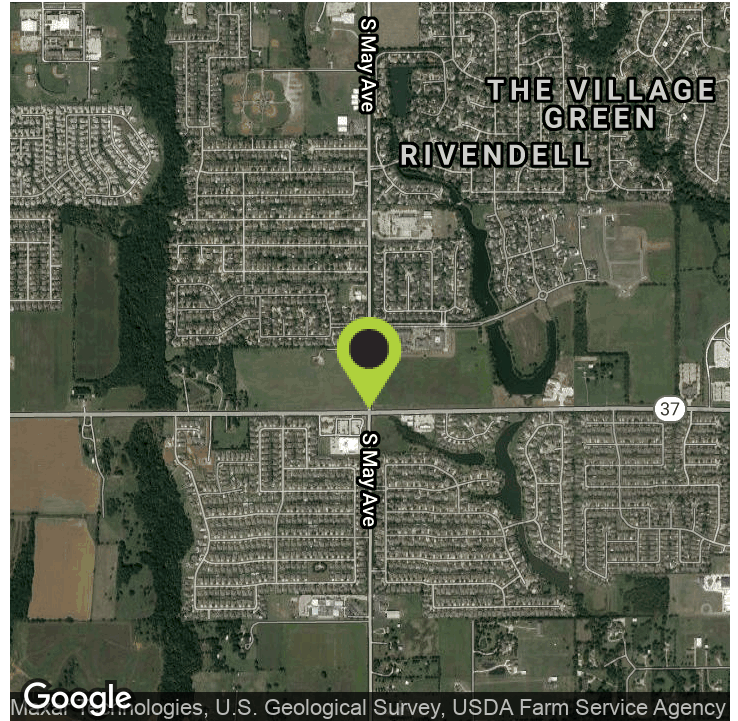


# LAND FOR SALE

S MAY AVE AT SOUTHWEST 134TH | OKLAHOMA CITY, OK 73170



## OFFERING SUMMARY

Tract 1   1.01 Acres :	\$495,000
Tract 2   4.07 Acres :	\$710,000

## PROPERTY OVERVIEW

- 5.08 Acres Available can be purchased separately
- Prime hard corner next to Walmart Neighborhood
- Public Utilities Available
- Zoned PUD 912

## LOCATION OVERVIEW

Excellent Commercial Property in a high growth area. Property can be purchase together separately, two tracts available. Public utilities present. Easy access I-44. Located in close proximity to the land purchased by Mercy Hospital for future six story hospital development.

### FOR MORE INFORMATION CONTACT:

**DEBBIE NAIFEH**

SALES ASSOCIATE

405.659.9439

dnaifeh@mcgrawrealtors.com

**McGraw**  
COMMERCIAL PROPERTIES

# LAND FOR SALE

S MAY AVE AT SOUTHWEST 134TH | OKLAHOMA CITY, OK 73170



FOR MORE INFORMATION CONTACT:

**DEBBIE NAIFEH**

SALES ASSOCIATE

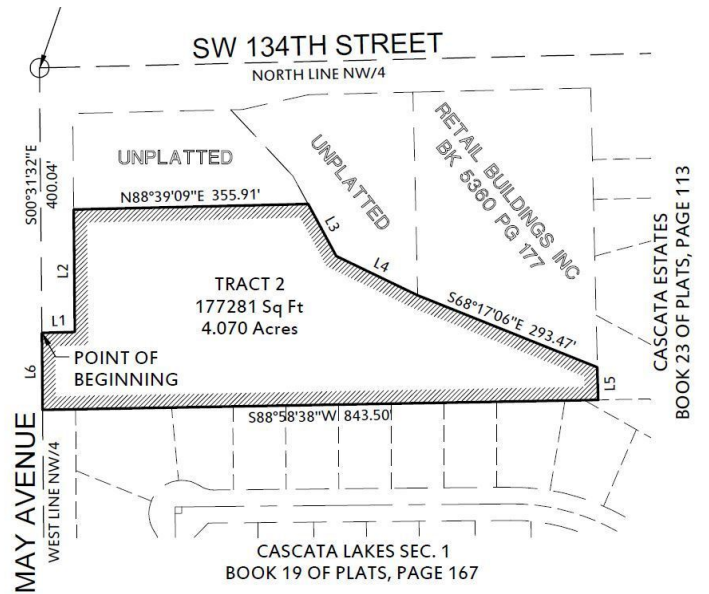
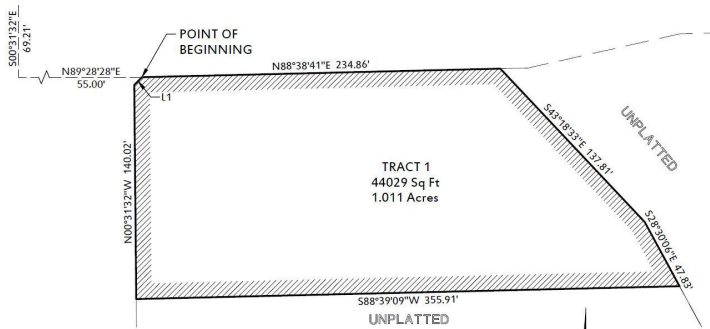
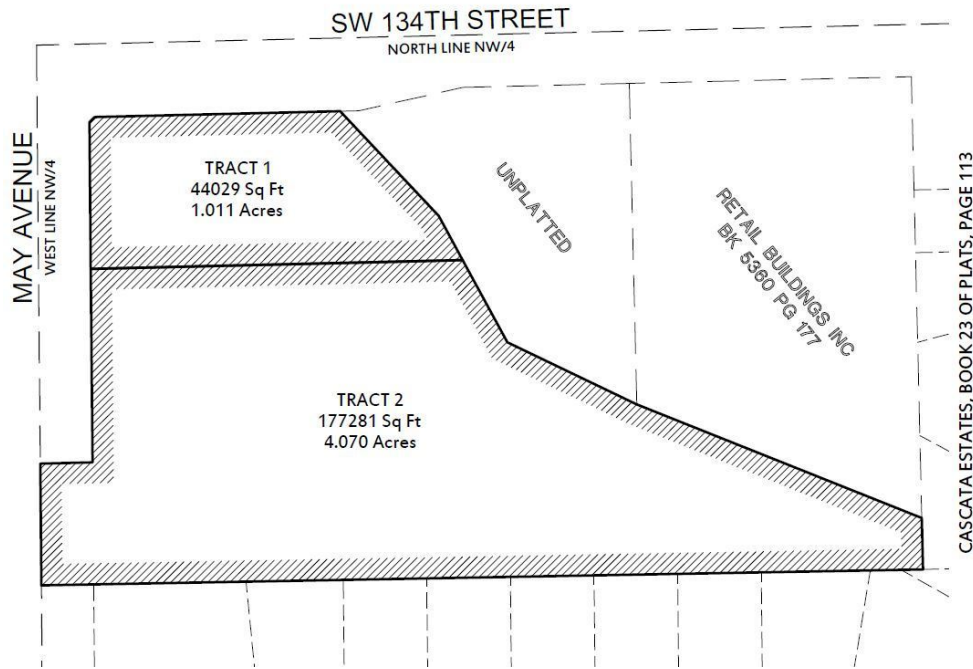
405.659.9439

[dnaifeh@mcgrawrealtors.com](mailto:dnaifeh@mcgrawrealtors.com)

**McGraw**  
COMMERCIAL PROPERTIES

# LAND FOR SALE

S MAY AVE AT SOUTHWEST 134TH | OKLAHOMA CITY, OK 73170



FOR MORE INFORMATION CONTACT:

**DEBBIE NAIFEH**

SALES ASSOCIATE

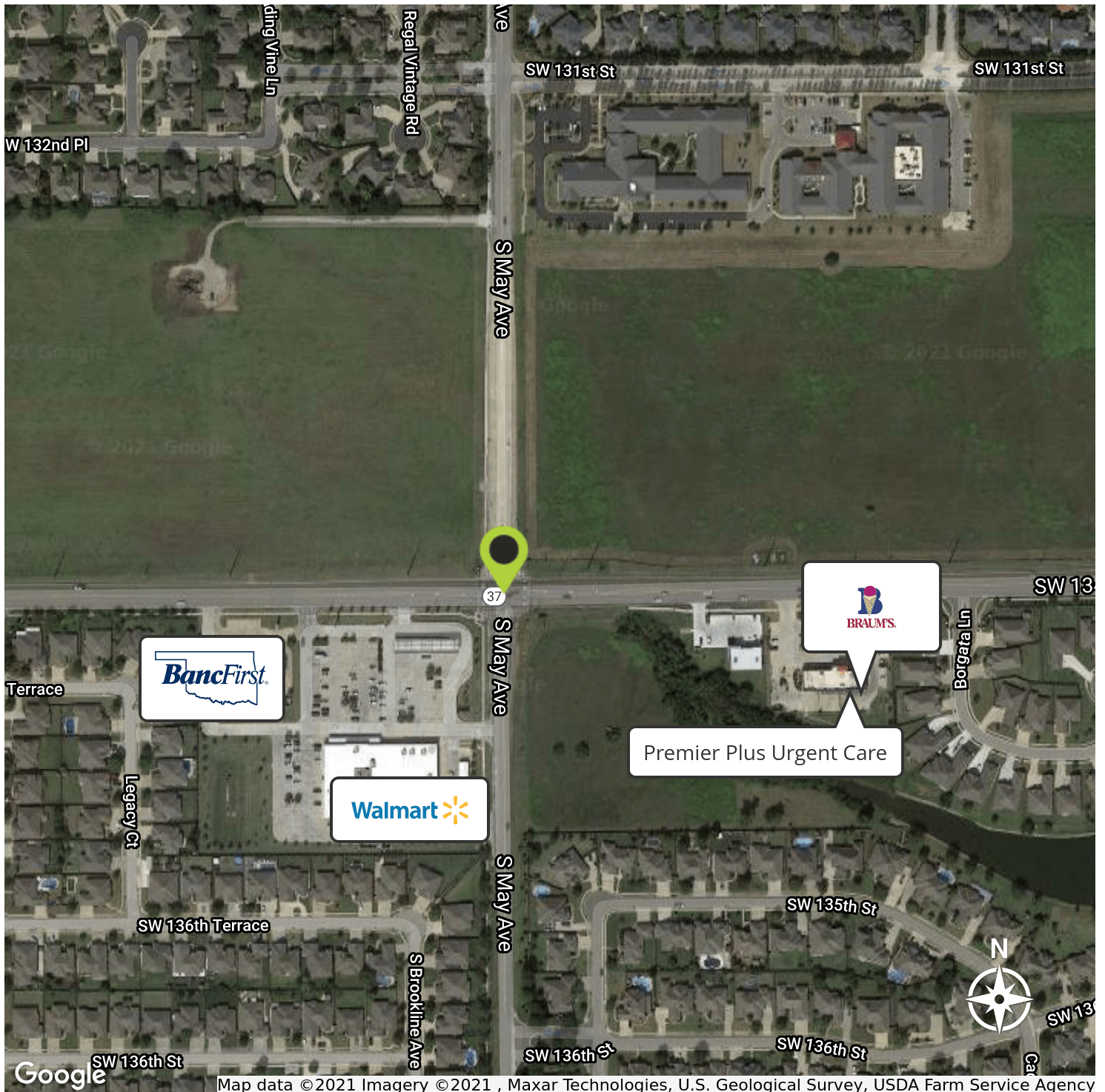
405.659.9439

dnaifeh@mcgrawrealtors.com

**McGraw**  
COMMERCIAL PROPERTIES

# LAND FOR SALE

S MAY AVE AT SOUTHWEST 134TH | OKLAHOMA CITY, OK 73170



**FOR MORE INFORMATION CONTACT:**

**DEBBIE NAIFEH**

SALES ASSOCIATE

405.659.9439

dnaifeh@mcgrawrealtors.com

**McGraw**  
COMMERCIAL PROPERTIES