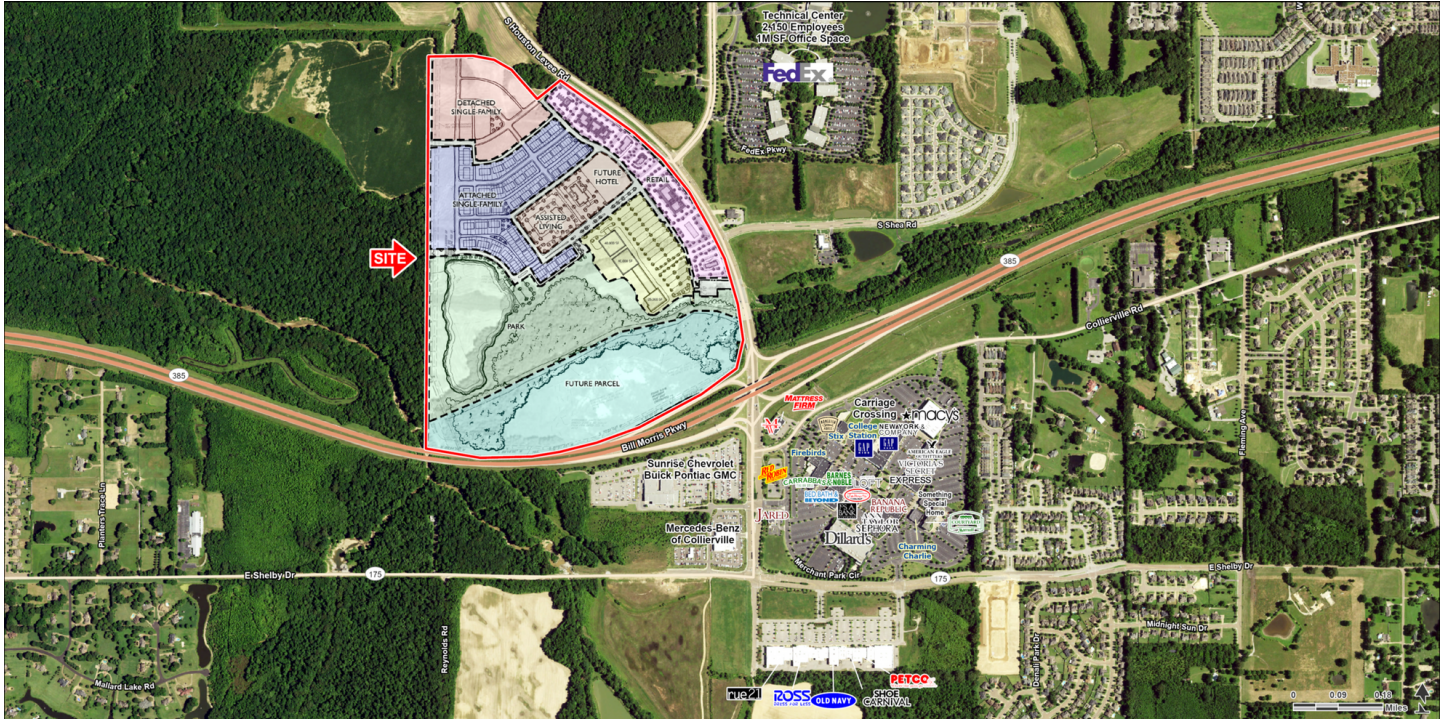


THE PARKE AT COLLIERVILLE

NWC Highway 385 & Houston Levee Rd, Collierville, TN 38017

EXECUTIVE SUMMARY



LOCATION OVERVIEW

Proposed mixed-use development offering anchor, junior anchor, and small shop space for lease and outparcels for sale on Houston Levee Road just north of Highway 385 in Collierville



PROPERTY HIGHLIGHTS

- Space For Lease: Anchor (up to 80,000 SF), Junior Anchor (25,000 SF) and approximately 14,000 SF of Small Shop space that is divisible to 1,400 SF
- For Sale: 1-2 acre parcels fronting Houston Levee Road
- Just minutes from the FedEx Technology Center and across from Carriage Crossing
- Site is approximately 5 miles from the new interchange of Highway 385 and Interstate 269 which connects to Interstate 55 in North Mississippi
- Traffic Counts: Highway 385 50,598 AADT and Houston Levee Road 19,552 AADT

DEMOGRAPHICS

	3 MILES	5 MILES	10 MILES
Population	23,269	84,989	311,495
Daytime Population	32,696	83,731	312,842
Households	8,911	31,142	116,949
Average HH Income	\$130,930	\$129,844	\$99,527

EXCLUSIVE AGENT(S)

JOHN REED • john.reed@tscg.com • 901.334.5704

HURSTON REED • hurston.reed@tscg.com • 901.334.5708

THE PARKE AT COLLIERVILLE

NWC Highway 385 & Houston Levee Rd, Collierville, TN 38017

CONCEPTUAL PLAN



EXCLUSIVE AGENT(S)

JOHN REED • john.reed@tscg.com • 901.334.5704

HURSTON REED • hurston.reed@tscg.com • 901.334.5708