

# LAND FOR SALE

11202 S ELM ST | JENKS, OK 74037



## OFFERING SUMMARY

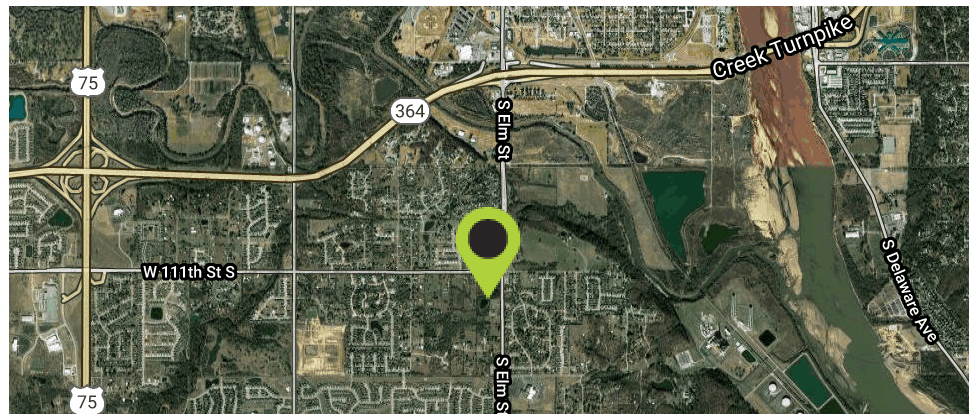
Sale Price:	Not Disclosed
Lot Size:	0.53 Acres
Use:	Retail
Zoning:	CS

## PROPERTY OVERVIEW

- Development Land proposed for Retail use- Lot adjacent to new Yale Cleaners- Nearby The Goddard School of Jenks, Walmart Neighborhood Market, First Baptist Church of Jenks Campus with 1,200 + attendee campus

## LOCATION OVERVIEW

Located South of the Creek Turnpike just South of 111th on Elm Street in Jenks, OK



### FOR MORE INFORMATION CONTACT:

**CARA LEIGH INGRAM**

SALES ASSOCIATE

918.376.1216 | 214.213.3233

cingram@mcgrawcp.com

**McGraw**  
COMMERCIAL PROPERTIES

# LAND FOR SALE

11202 S ELM ST | JENKS, OK 74037



## FOR MORE INFORMATION CONTACT:

CARA LEIGH INGRAM

SALES ASSOCIATE

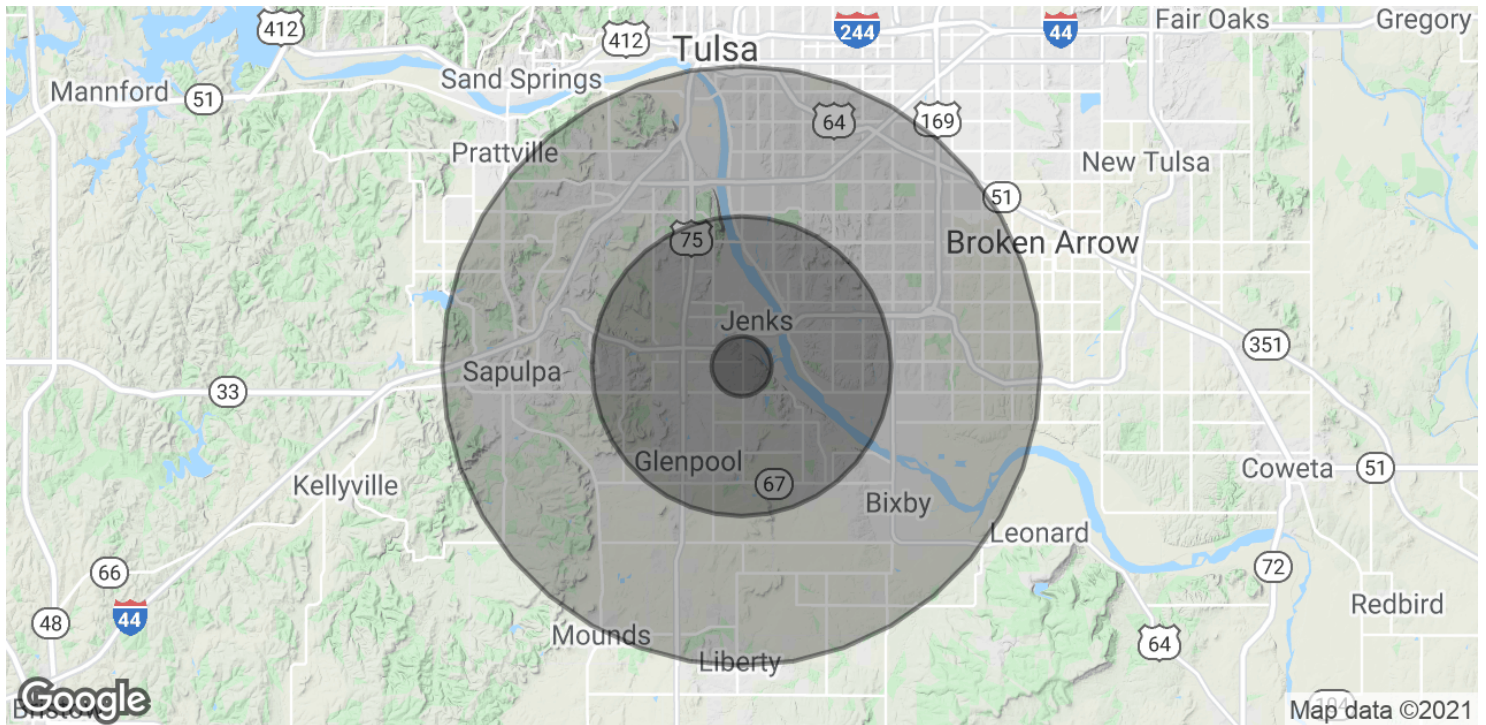
918.376.1216 | 214.213.3233

cingram@mcgrawcp.com

**McGraw**  
COMMERCIAL PROPERTIES

# LAND FOR SALE

11202 S ELM ST | JENKS, OK 74037



<b>POPULATION</b>	<b>1 MILE</b>	<b>5 MILES</b>	<b>10 MILES</b>
Total Population	2,188	84,813	359,418
Average age	33.3	36.2	37.9
Average age (Male)	32.4	35.0	36.5
Average age (Female)	34.6	37.4	39.1
<b>HOUSEHOLDS &amp; INCOME</b>	<b>1 MILE</b>	<b>5 MILES</b>	<b>10 MILES</b>
Total households	748	32,965	153,796
# of persons per HH	2.9	2.6	2.3
Average HH income	\$93,708	\$91,717	\$76,330
Average house value	\$125,060	\$254,925	\$222,348

\* Demographic data derived from 2010 US Census

**FOR MORE INFORMATION CONTACT:**

**CARA LEIGH INGRAM**  
 SALES ASSOCIATE  
 918.376.1216 | 214.213.3233  
 cingram@mcgrawcp.com

