

PRIME RETAIL SPACE ADJACENT TO KOHL'S

Hoover, AL 35226 | 5513 Grove Blvd | Preserve Parkway & Sulphur Springs Rd | #1331



- 24,700 +/- SF available adjacent to Kohl's
- Located at Grove Blvd, off I-459 in Hoover
- Great co-tenancy with abundant growth surrounding the area
- Abundant parking and visibility from Grove Blvd

DEMOGRAPHICS	3 MILES	5 MILES	7 MILES	TRAFFIC COUNTS	
2018 POPULATION	38,074	103,656	186,785	Preserve Parkway	9,600 VPD
2018 DAYTIME POPULATION	34,262	102,899	185,124	Interstate 459 South	80,540 VPD
2018 AVERAGE HH INCOME	\$116,964	\$96,121	\$92,205		
2018 MEDIAN HH INCOME	\$94,039	\$73,078	\$68,522		

AVAILABLE SF:
24,700 SF

FRONTAGE:
APPROX 98' 0"

ZONING:
COMMERCIAL

RATES:
CALL FOR DETAILS

AREA ANCHORS



FOR MORE INFORMATION, CONTACT EXCLUSIVE AGENT(S):
KATHY DENNIS, CCIM • kathy.dennis@tscg.com • 205.776.6708

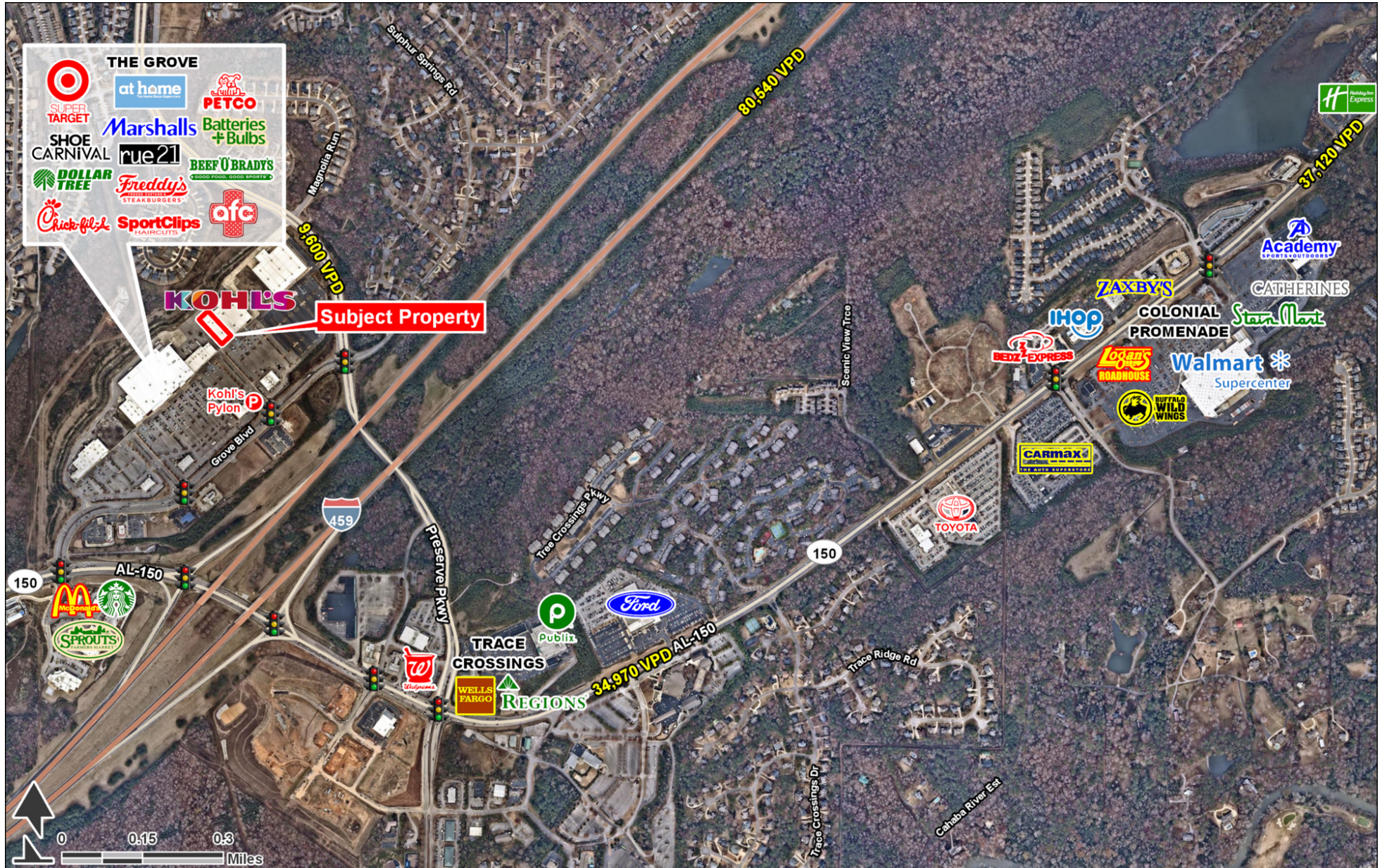
Demographics: Esri

No warranty expressed or implied has been made as to the accuracy of the information provided herein, no liability assumed for error or omissions.



PRIME RETAIL SPACE ADJACENT TO KOHL'S

Hoover, AL 35226 | 5513 Grove Blvd | Preserve Parkway & Sulphur Springs Rd | #1331



FOR MORE INFORMATION, CONTACT EXCLUSIVE AGENT(S):
KATHY DENNIS, CCIM • kathy.dennis@tscg.com • 205.776.6708

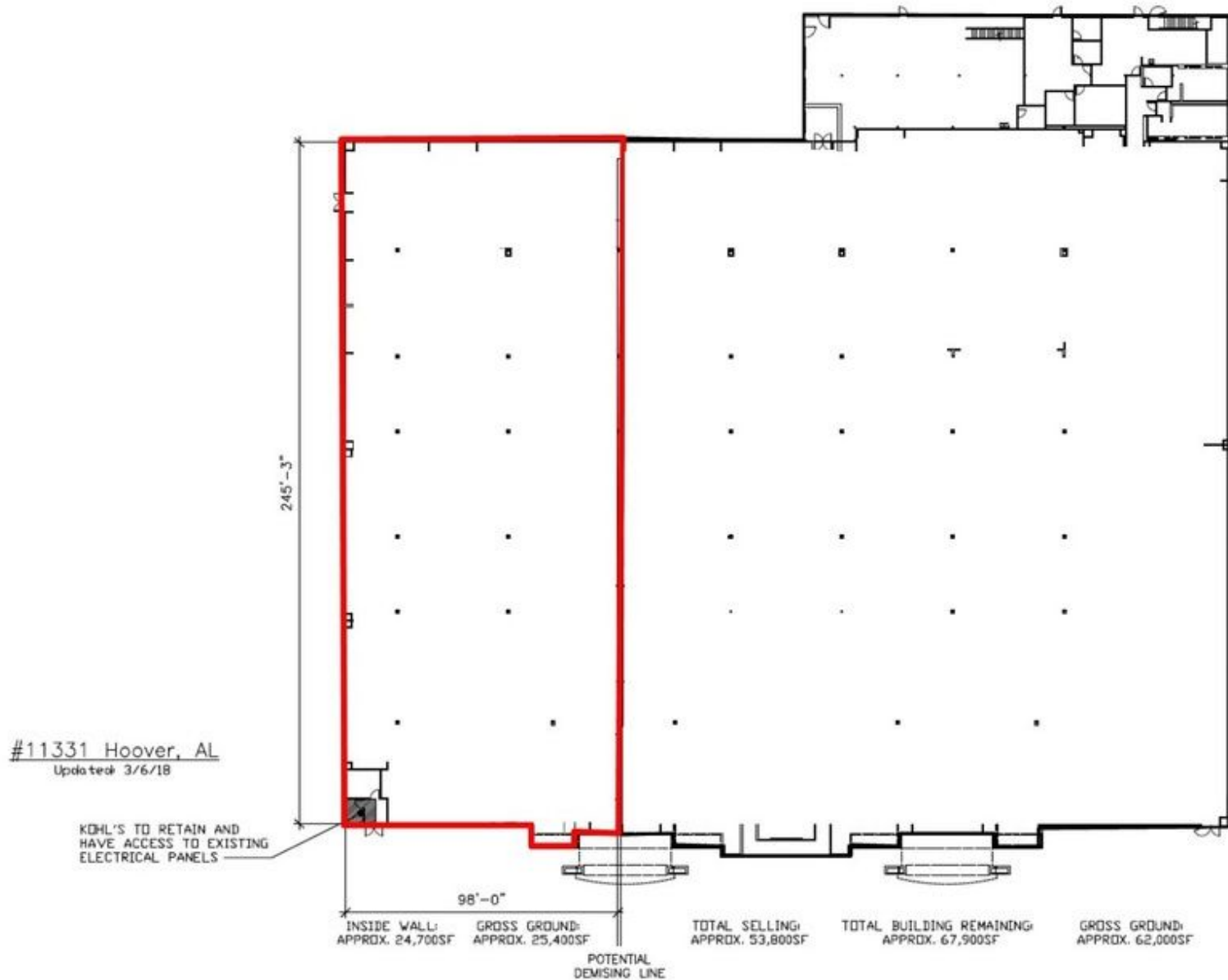


Demographics: Esri

No warranty expressed or implied has been made as to the accuracy of the information provided herein, no liability assumed for error or omissions.

PRIME RETAIL SPACE ADJACENT TO KOHL'S

Hoover, AL 35226 | 5513 Grove Blvd | Preserve Parkway & Sulphur Springs Rd | #1331



FOR MORE INFORMATION, CONTACT EXCLUSIVE AGENT(S):
KATHY DENNIS, CCIM • kathy.dennis@tscg.com • 205.776.6708

Demographics: Esri

No warranty expressed or implied has been made as to the accuracy of the information provided herein, no liability assumed for error or omissions.

