

4610 RALEIGH LAGRANGE RD

Memphis, TN 38128

EXECUTIVE SUMMARY



LOCATION OVERVIEW

29.21 acres of commercial and residential land on the southeast corner of Raleigh Lagrange Road and Hoover Drive

PROPERTY HIGHLIGHTS

- Commercial potential on the corner: Parcel 1 - 2.8 acres
- Residential land: Parcel 2 - 10.52 acres and Parcel 3 - 15.89 acres
- Owner will divide
- Traffic Count: Raleigh Lagrange Rd 26,315 AADT

DEMOGRAPHICS

	1 MILE	3 MILES	5 MILES
Population	7,351	72,947	193,658
Daytime Population	5,823	62,372	169,215
Households	2,916	26,547	70,282
Average HH Income	\$48,767	\$52,564	\$59,473

EXCLUSIVE AGENT(S)

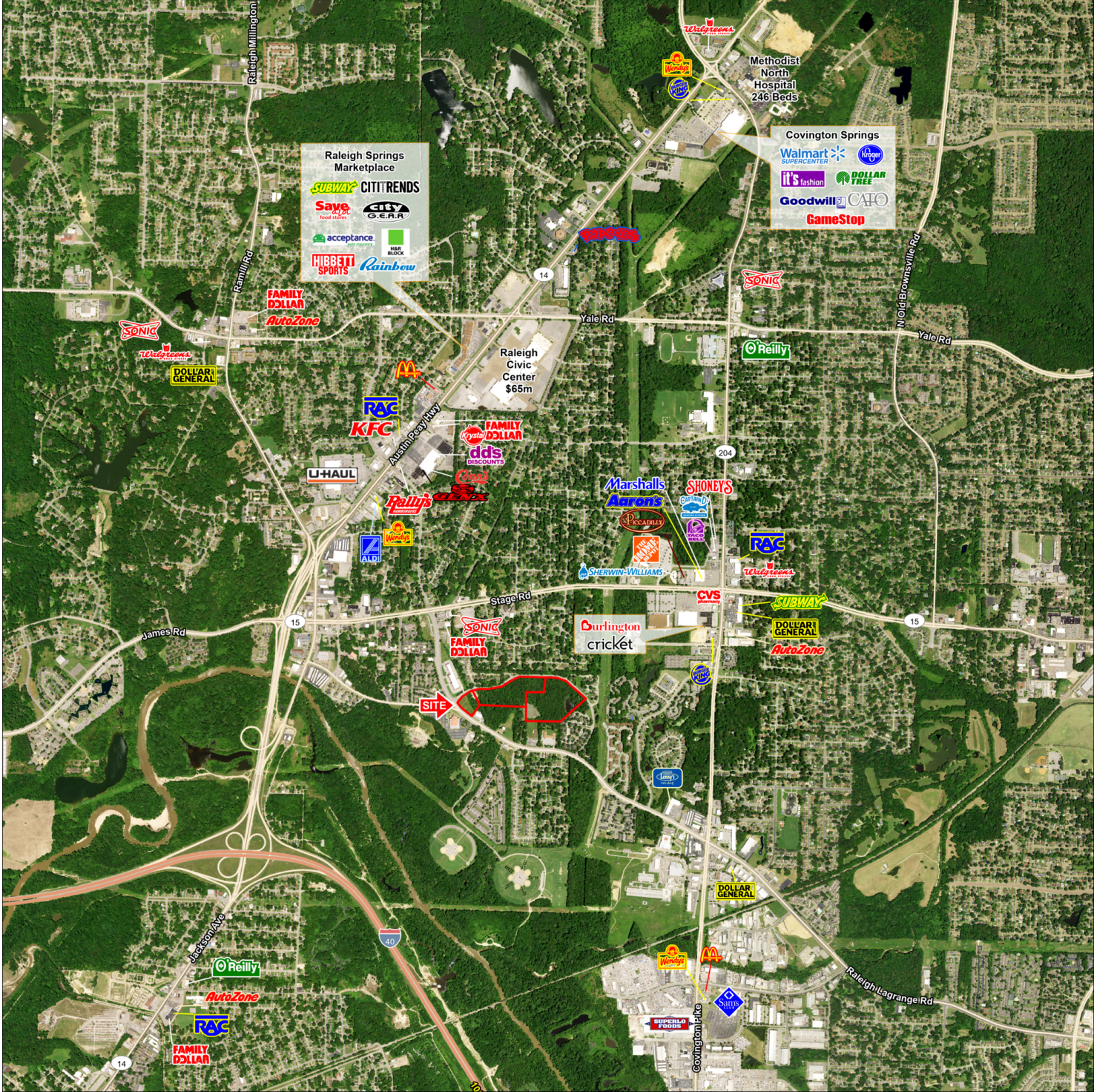
SHAWN MASSEY, CCIM, CRRP, ALC • shawn.massey@tscg.com • 901.334.5702



4610 RALEIGH LAGRANGE RD

Memphis, TN 38128

AERIAL



EXCLUSIVE AGENT(S)
 SHAWN MASSEY, CCIM, CRRP, ALC • shawn.massey@tscg.com • 901.334.5702

No warranty expressed or implied has been made as to the accuracy of this information, no liability assumed for errors or omissions.

