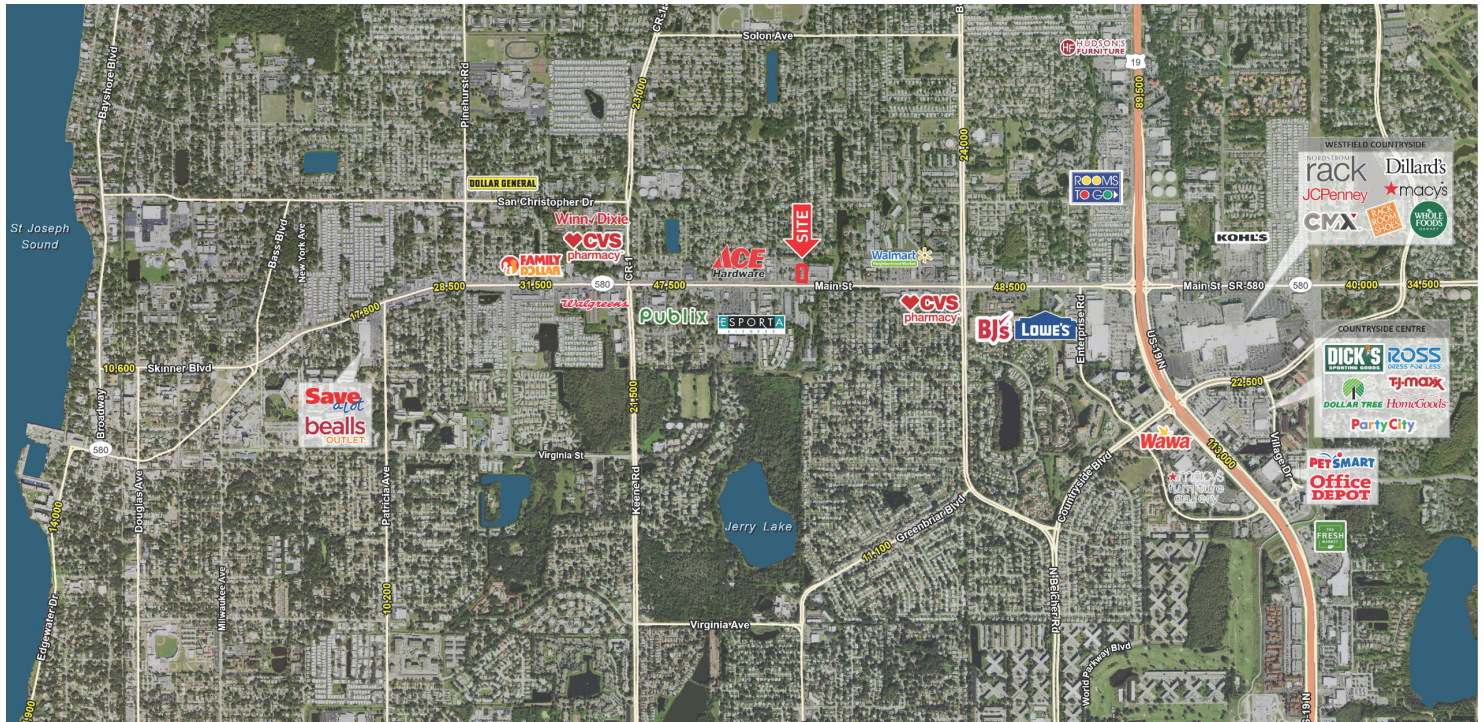


# FORMER PIZZA HUT

1804 Main St, Dunedin, FL 34698

## EXECUTIVE SUMMARY



### LOCATION OVERVIEW

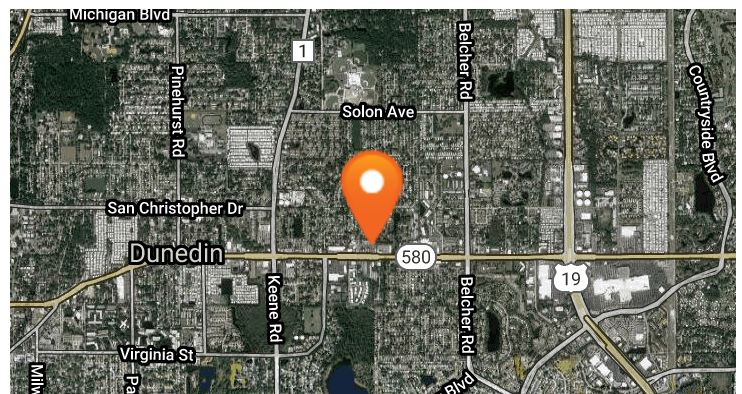
Main St, 1 mile from US 19 N

### PROPERTY HIGHLIGHTS

- FULLY LEASED
- GLA: 2,430 SF
- 0.73 AC
- Freestanding 2nd generation restaurant space with a drive thru
- Excellent frontage on Main St, a main east-west artery in Dunedin
- Located 1 mile from US 19 N
- Shared cross access with Wendy's and Taco Bell, which are located at a lighted intersection
- Tenants in the market include: Publix, Starbucks, Walmart Neighborhood Market, Lowe's, Winn Dixie, Jersey Mike's, and Advanced Auto Parts

### DEMOGRAPHICS

	1 MILE	3 MILES	5 MILES
Total Population	14,179	105,191	239,747
Daytime Population	13,448	101,601	233,879
Households	7,306	49,834	108,385
Average HH Income (\$)	61,484	75,318	76,129



### EXCLUSIVE AGENT(S)

JACLYN LANGHOLZ • [Jaclyn.Langholz@tscg.com](mailto:Jaclyn.Langholz@tscg.com) • 813.961.1812