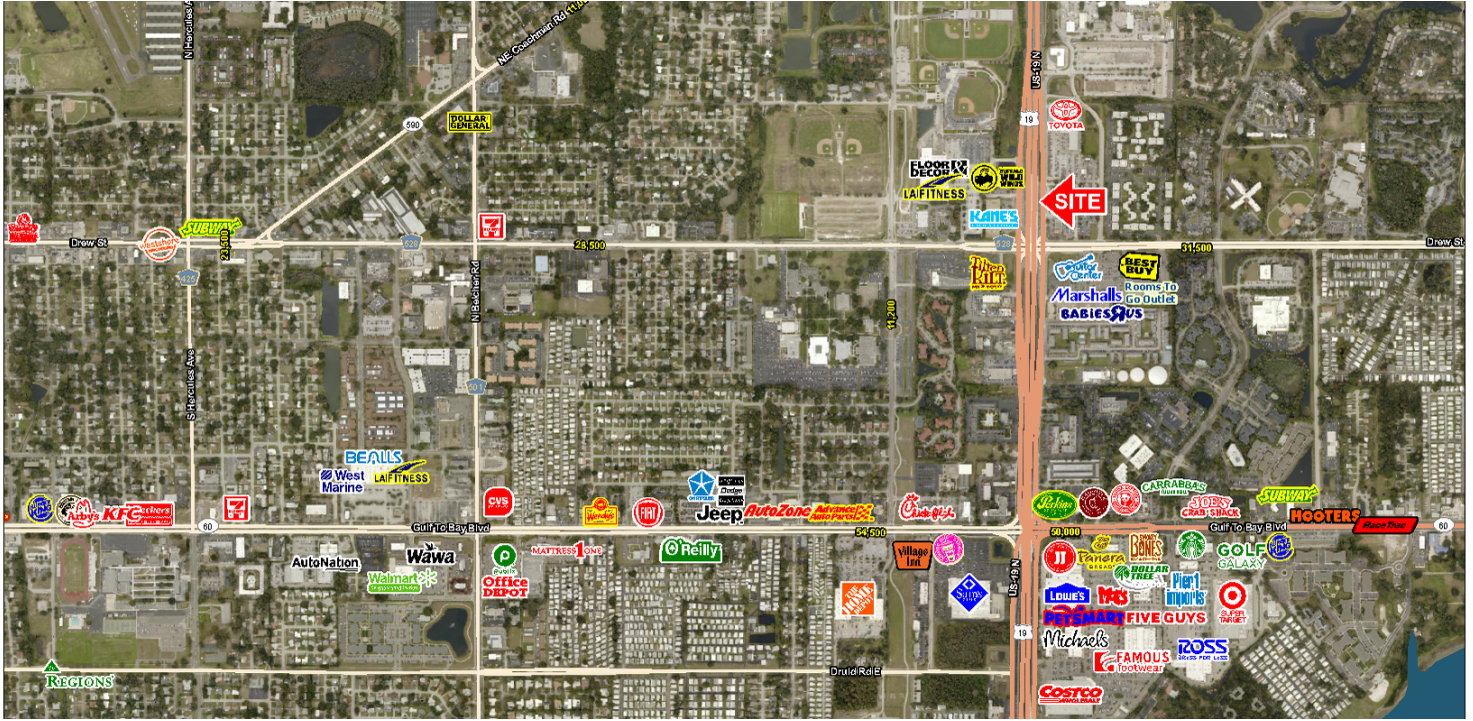


# HAVOLINE XPRESS LUBE SURPLUS - CLEARWATER

2620 Drew St, Clearwater, FL 33759

## EXECUTIVE SUMMARY



## LOCATION OVERVIEW

Located on the NEQ of Drew Street and US Highway 19

## PROPERTY HIGHLIGHTS

- BLDG GLA: 3,157 SF
- PARCEL: 0.46 AC
- Excellent location at a highly trafficked intersection
- Location directly off of US Highway 19 makes this a conveniently accessible location in the Clearwater market
- Traffic Counts (AADT): Drew Street - 31,500 and US Highway 19 - 107,500
- Area retailers include: Babies R Us, Marshalls, Guitar Center, Best Buy, Kane's Furniture, Floor & Décor, La Fitness, Buffalo Wild Wings, PetSmart, Micahel's, Lowe's, Sam's Club, The Home Depot, and more

## DEMOGRAPHICS

|                        | 1 MILE | 3 MILES | 5 MILES |
|------------------------|--------|---------|---------|
| Total Population       | 14,668 | 92,579  | 248,837 |
| Daytime Population     | 15,649 | 90,920  | 246,013 |
| Households             | 6,480  | 41,474  | 111,196 |
| Average HH Income (\$) | 53,668 | 70,650  | 66,815  |



## EXCLUSIVE AGENT(S)

JACLYN LANGHOLZ • [Jaclyn.Langholz@tscg.com](mailto:Jaclyn.Langholz@tscg.com) • 813.961.1812