

# DOTHAN HIGH SCHOOL OUTPARCELS

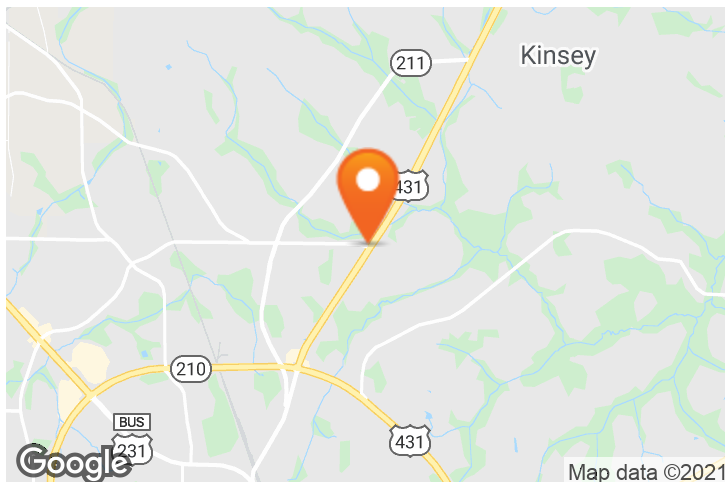
US 431 & Westgate Parkway, Dothan, AL 36303

## EXECUTIVE SUMMARY



## LOCATION OVERVIEW

Located at the intersection of Highway 431 and Westgate Parkway directly in front of Dothan High School



## PROPERTY HIGHLIGHTS

- Available: +/- 4.0 Acres
- Signalized intersection and superior access along Highway 431 & Westgate Parkway
- Immediately adjacent to the newly merged Dothan High School, with a student enrollment of 1,187
- Jack's opening in November 2019
- Traffic Count: 20,060, Highway 431

## DEMOGRAPHICS

	3 MILES	5 MILES	10 MILES
POPULATION	13,371	45,110	98,335
DAYTIME POPULATION	15,171	65,049	110,604
HOUSEHOLDS	5,560	18,290	39,416
AVERAGE HH INCOME	\$47,403	\$58,001	\$66,803

## EXCLUSIVE AGENT(S)

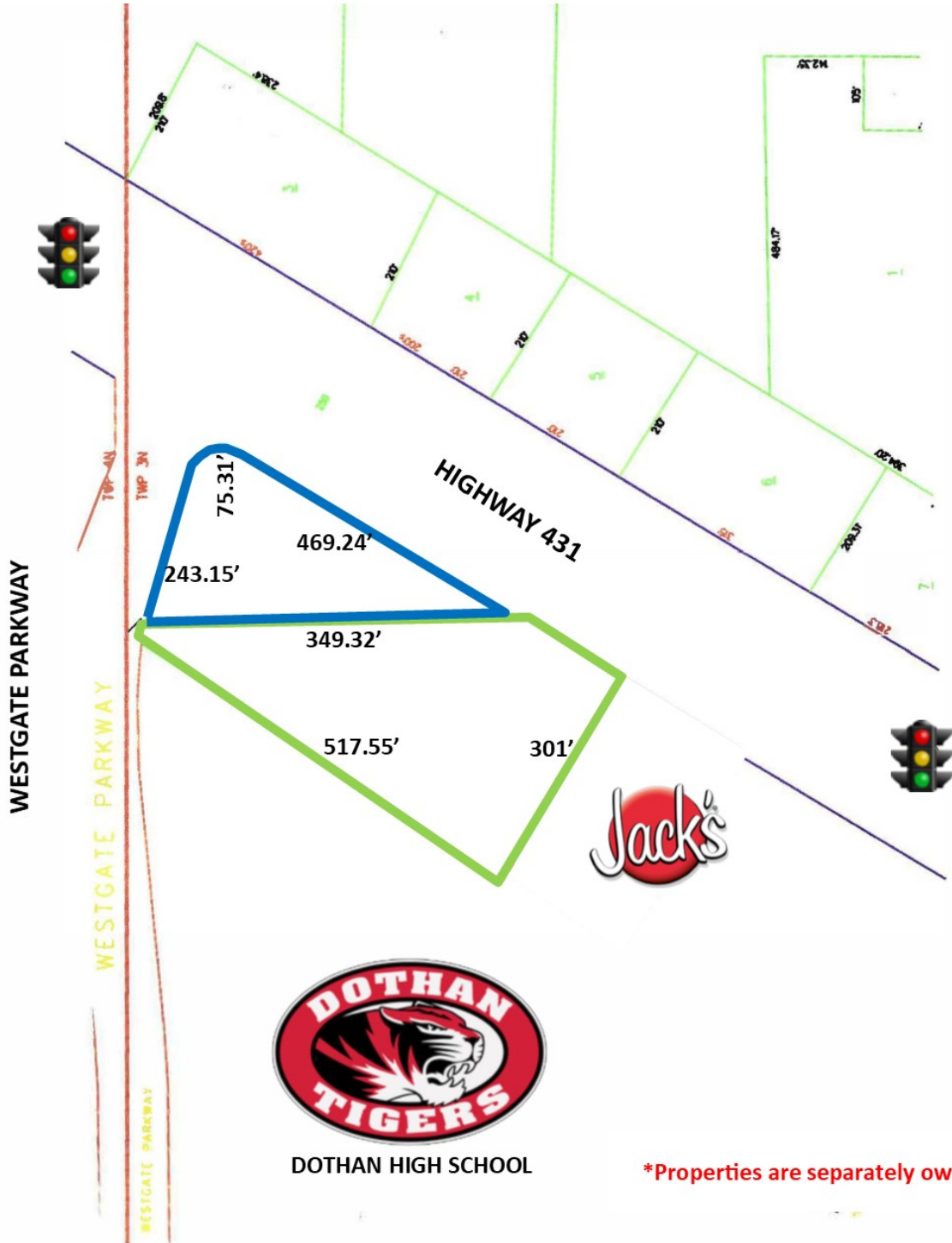
ALEXANDER BARINEAU • alexander.barineau@tscg.com • 205.776.6715

RAY JONES, CCIM • ray.jones@tscg.com • 334.332.8424

# DOTHAN HIGH SCHOOL OUTPARCELS

US 431 & Westgate Parkway, Dothan, AL 36303

## SITE PLAN



\*Properties are separately owned

### EXCLUSIVE AGENT(S)

ALEXANDER BARINEAU • alexander.barineau@tscg.com • 205.776.6715

RAY JONES, CCIM • ray.jones@tscg.com • 334.332.8424



