

RIDDLE
ASSOCIATES Inc.
Commercial Real Estate

RETAIL PROPERTY FOR SALE or LEASE

1020 Fishermans Road
Norfolk, VA 23503



SALE PRICE: \$395,000.00

LEASE RATE: \$2,450.00/Month

- 2,100SF Freestanding Building
- Flexible Layout
- Ample Parking
- Former Bank Branch
- Bank Vault In Place



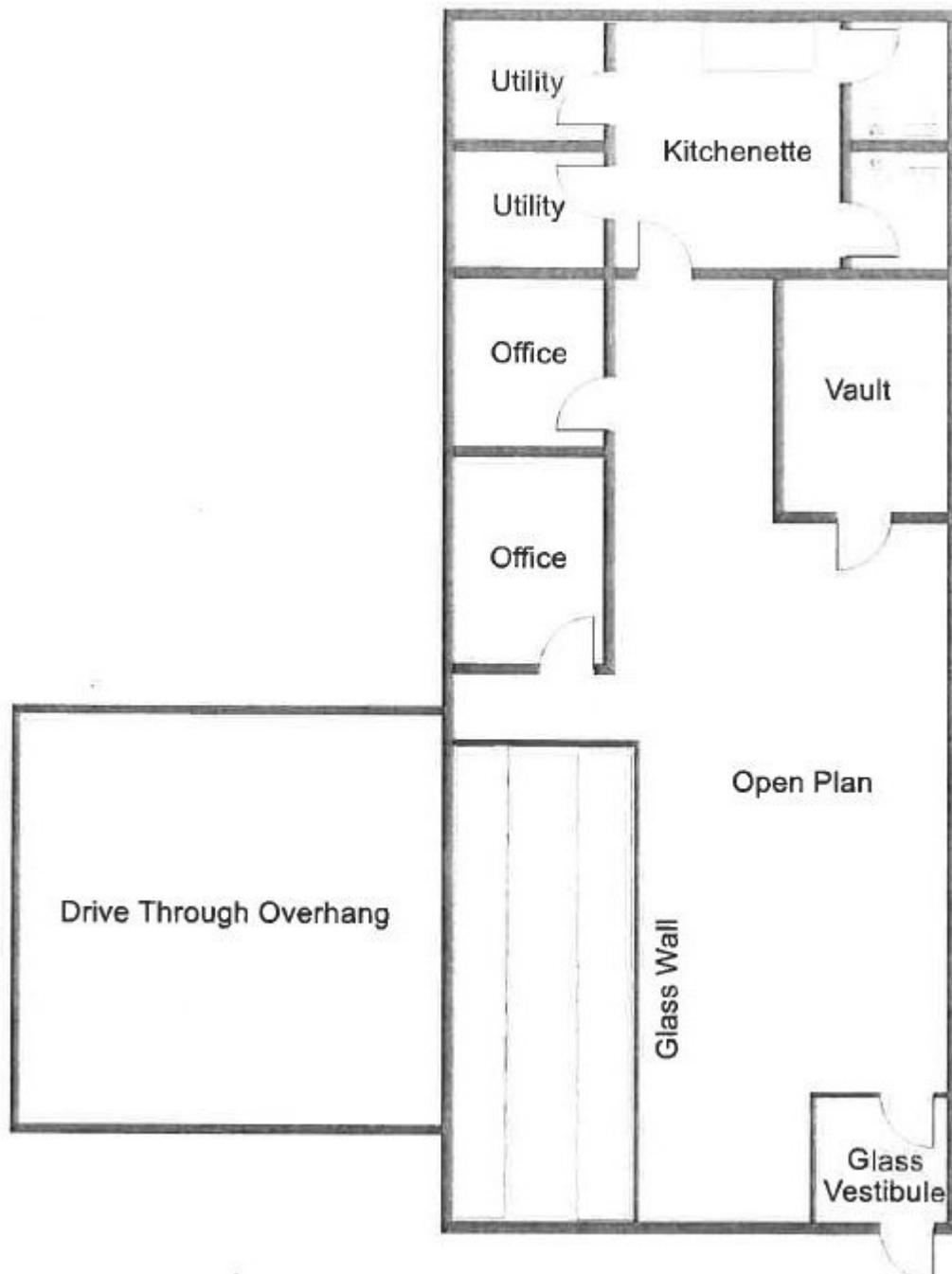
The information presented in this marketing flyer is obtained from sources believed to be reliable, but is not warranted.
This offer is subject to prior sale or lease, errors, omissions or withdrawal without notice.

EXCLUSIVELY OFFERED BY :

CONTACT:
BILL BRACKMAN
bbrackman@riddleassociates.com
(757) 523-1900

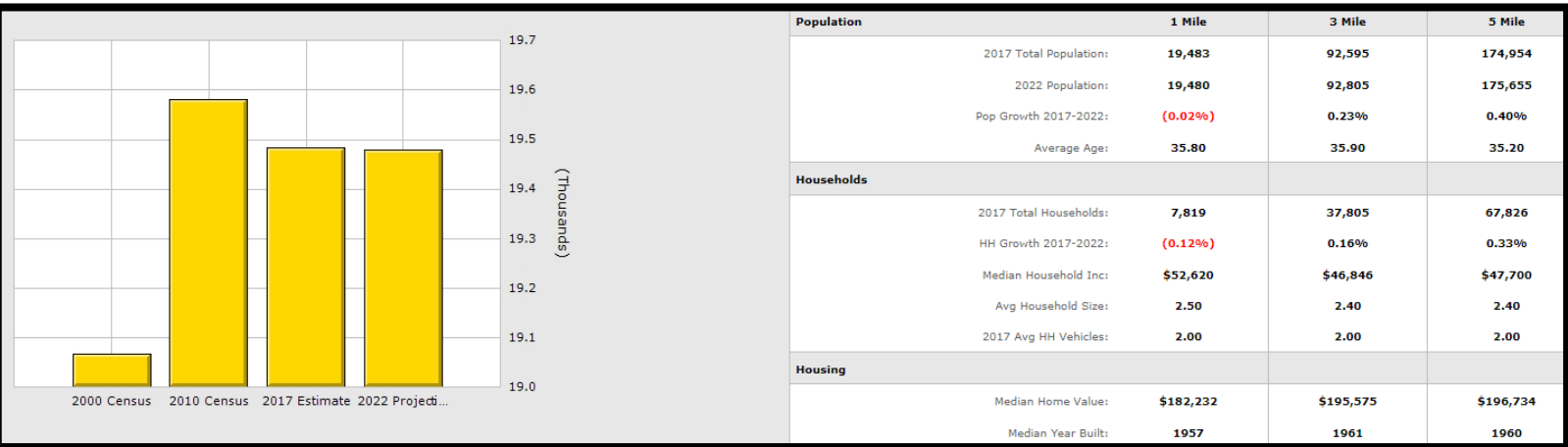
RIDDLE ASSOCIATES, INC.
Commercial Real Estate

“Real Estate Services Tailored to Your Needs”



1020 Fishermans Road, Norfolk, VA 23503

*The information presented in this marketing flyer is obtained from sources believed to be reliable, but is not warranted.
This offer is subject to prior sale or lease, errors, omissions or withdrawal without notice.*



1020 Fishermans Road, Norfolk, VA 23503

*The information presented in this marketing flyer is obtained from sources believed to be reliable, but is not warranted.
This offer is subject to prior sale or lease, errors, omissions or withdrawal without notice.*