

Land for Lease

16,000 SF YARD SPACE - IMMEDIATELY AVAILABLE

25025 Pacific Highway S, Kent, WA 98032



LISTING DATA

AVAILABLE LAND SF: 16,000 SF

ECONOMIC DATA

LEASE RATE: \$0.20 SF/month (NNN)

COMMENTS

- Great visibility and access along Pacific Hwy S
- Cleared and level yard space
- Can be expanded for additional space
- Can be fully fenced



PROPERTY OVERVIEW

Yard space available for lease located along Pacific Highway just west of I-5 in Kent. Zoned commercial manufacturing (CM) to allow for retail establishments and small-scale, light industrial operations, heavy commercial and wholesale uses, along with specialty manufacturing. Great for car and boat storage, contractors site, tow yard, and miscellaneous storage.

CONTACT

Kane Johnson

kjohnson@lee-associates.com

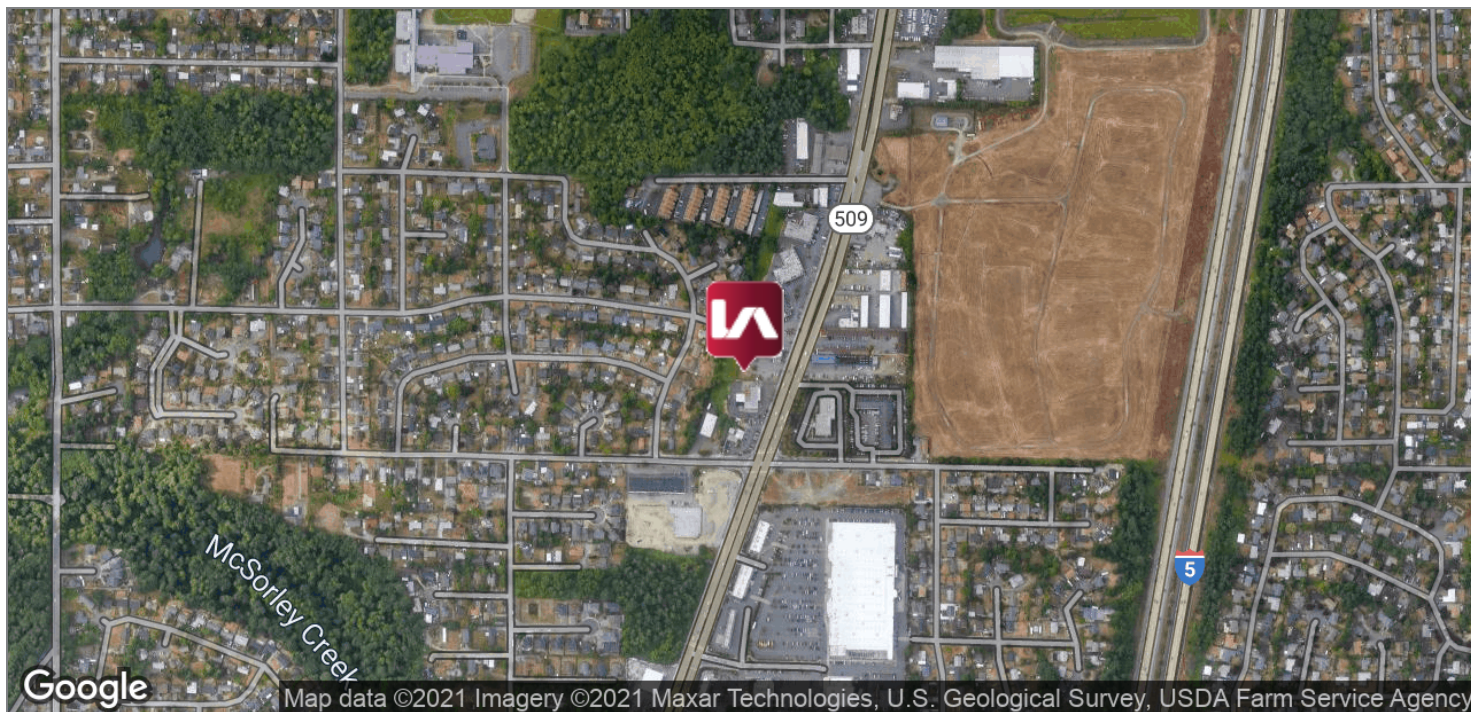
D 206.210.5201

We obtained the information above from sources we believe to be reliable. However, we have not verified its accuracy and make no guarantee, warranty or representation about it. It is submitted subject to the possibility of errors, omissions, change of price, rental or other conditions, prior sale, lease or financing, or withdrawal without notice. We include projections, opinions, assumptions or estimates for example only, and they may not represent current or future performance of the property. You and your tax and legal advisors should conduct your own investigation of the property and transaction.

Land for Lease

16,000 SF YARD SPACE - IMMEDIATELY AVAILABLE

25025 Pacific Highway S, Kent, WA 98032



CONTACT

Kane Johnson

kjohnson@lee-associates.com

D 206.210.5201

We obtained the information above from sources we believe to be reliable. However, we have not verified its accuracy and make no guarantee, warranty or representation about it. It is submitted subject to the possibility of errors, omissions, change of price, rental or other conditions, prior sale, lease or financing, or withdrawal without notice. We include projections, opinions, assumptions or estimates for example only, and they may not represent current or future performance of the property. You and your tax and legal advisors should conduct your own investigation of the property and transaction.