

Land for Sale (Industrial)

ARLINGTON VALLEY ROAD LOTS

Arlington Valley Road, Arlington, WA 98223



SIZE & PRICING

LOT A - 2.61 ACRES	\$12.00 PSF (\$1,364,299)
LOT E - 1.49 ACRES	\$14.00 PSF (\$908,662)

ZONING

LI - INDUSTRIAL (City of Arlington)

COMMENTS

Build Ready:

- Filled & Graded
- SEPA Approved
- Utilities Available
- Frontage Improvements Complete



CONTACT

Chris Peterson, SIOR, CCIM
cpeterson@lee-associates.com
D 206.773.2678

Richard Peterson
rpeterson@lee-associates.com
D 206.773.2677

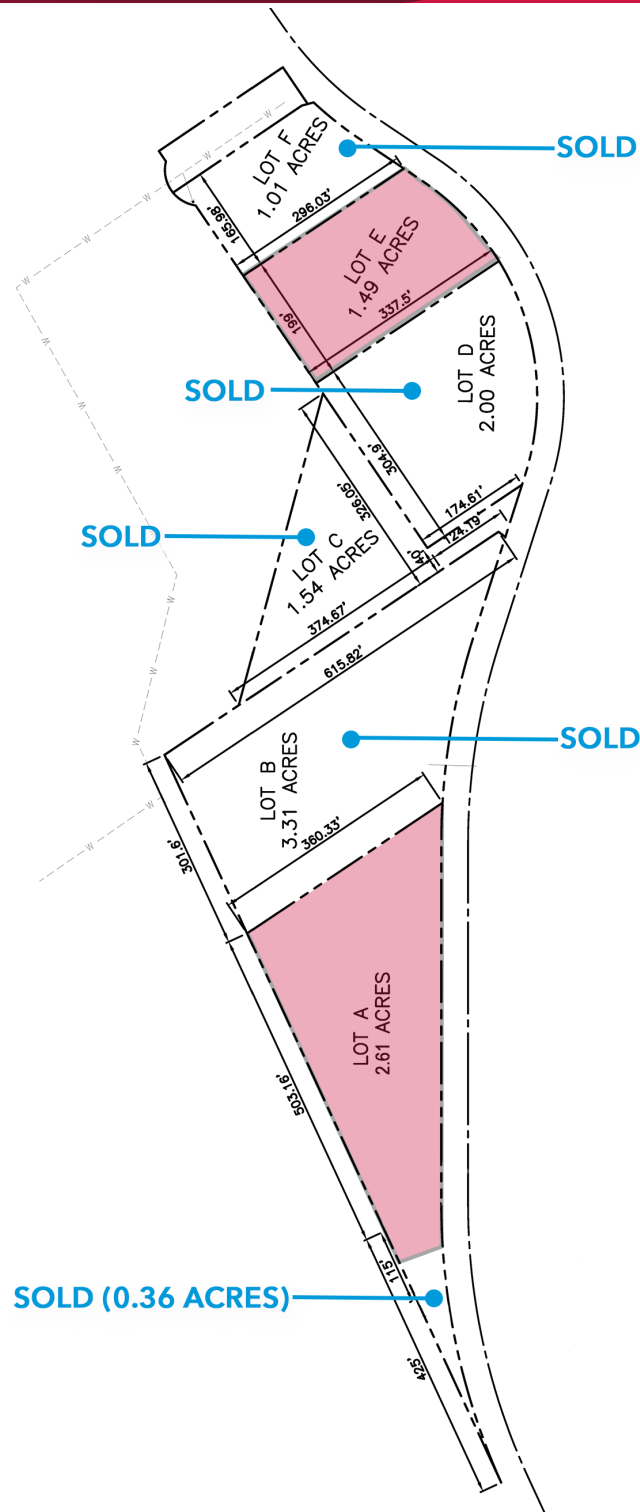
Mason Cogle
mcogle@lee-associates.com
D 206.773.2687

Jon Bockman
jbockman@lee-associates.com
D 425.417.5391

We obtained the information above from sources we believe to be reliable. However, we have not verified its accuracy and make no guarantee, warranty or representation about it. It is submitted subject to the possibility of errors, omissions, change of price, rental or other conditions, prior sale, lease or financing, or withdrawal without notice. We include projections, opinions, assumptions or estimates for example only, and they may not represent current or future performance of the property. You and your tax and legal advisors should conduct your own investigation of the property and transaction.

Land for Sale

Arlington Valley Road, Arlington, WA 98223



CONTACT

Chris Peterson, SIOR, CCIM

cpeterson@lee-associates.com

D 206.773.2678

Richard Peterson

rpeter@lee-associates.com

D 206.773.2677

Mason Cogle

mcogle@lee-associates.com

D 206.773.2687

Jon Bockman

jbockman@lee-associates.com

D 425.417.5391

We obtained the information above from sources we believe to be reliable. However, we have not verified its accuracy and make no guarantee, warranty or representation about it. It is submitted subject to the possibility of errors, omissions, change of price, rental or other conditions, prior sale, lease or financing, or withdrawal without notice. We include projections, opinions, assumptions or estimates for example only, and they may not represent current or future performance of the property. You and your tax and legal advisors should conduct your own investigation of the property and transaction.