

# Industrial for Lease

## 6200 MERRILL CREEK BUILDING

6200 23rd Drive W, Everett, WA 98203



### LISTING DATA

**AVAILABLE SF:** ±56,800 SF  
**CLEAR HEIGHT:** ±24' Clear  
**LOADING:** 12 Dock High Doors  
2 Grade Level Doors  
**PARKING:** 1.6 Stalls / 1,000 SF

### ECONOMIC DATA

**WAREHOUSE:** \$0.75 / SF / Month  
**OFFICE:** \$1.50 / SF / Month  
**NNN:** \$0.24 / SF / Month

### BUILDING DATA

**TOTAL BLDG SF:** 92,580 SF  
**YEAR BUILT:** 2006  
**ZONING:** M-1 (City of Everett)



### PROPERTY HIGHLIGHTS

- Space heavily built out with high quality office/showroom - Landlord is willing to remove the majority of the improvements as needed to fit needs.
- Strategically located within 1/4 mile of the Boeing 747, 777, 787 Plant with excellent access to I-5 via SR-526

### CONTACT

**Chris Peterson, SIOR, CCIM**  
cpeterson@lee-associates.com  
D 206.773.2678

**Richard Peterson**  
rpeterson@lee-associates.com  
D 206.773.2677

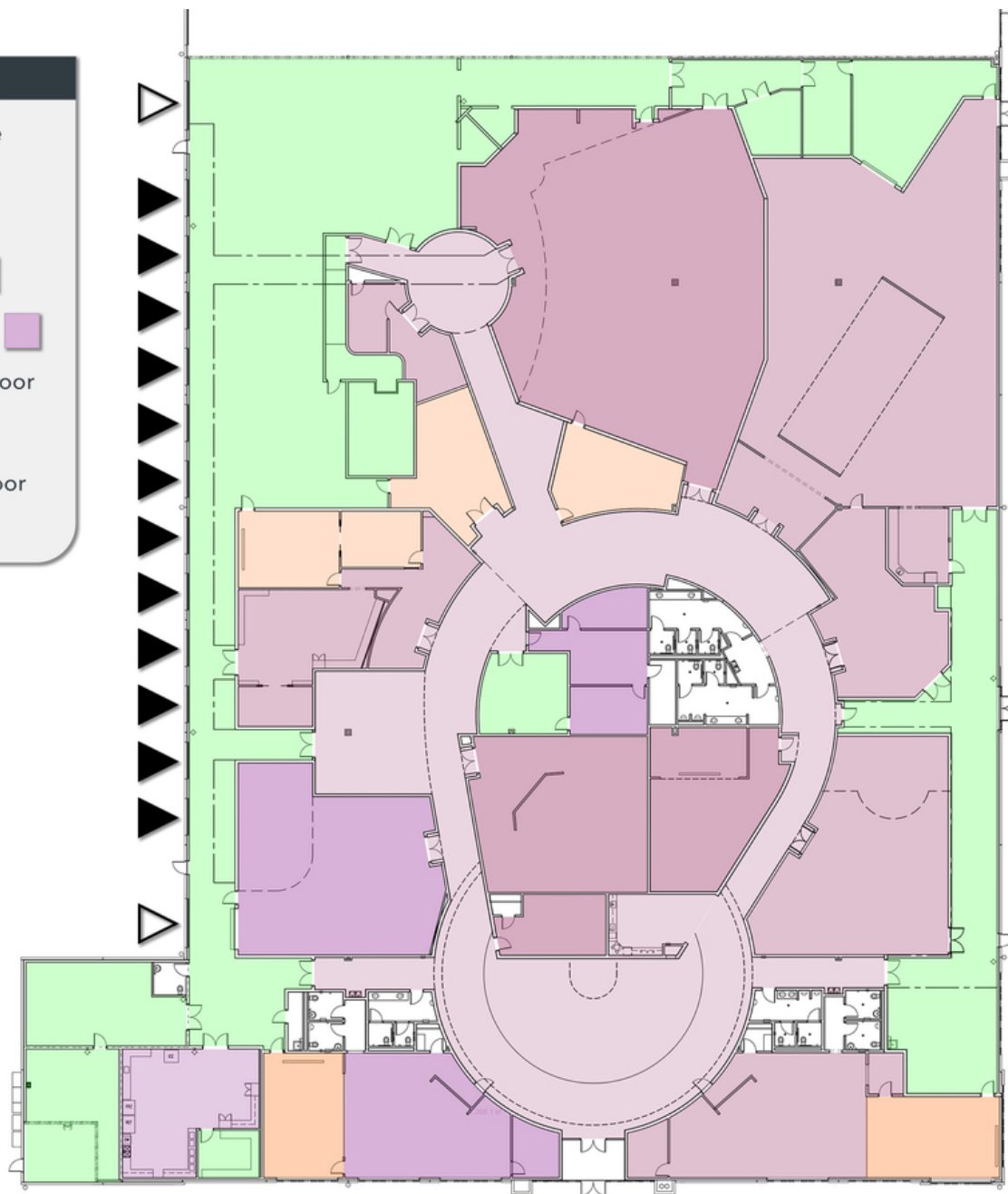
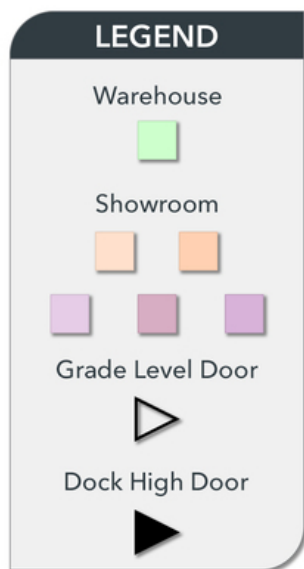
**Mason Cogle**  
mcogle@lee-associates.com  
D 206.773.2687

We obtained the information above from sources we believe to be reliable. However, we have not verified its accuracy and make no guarantee, warranty or representation about it. It is submitted subject to the possibility of errors, omissions, change of price, rental or other conditions, prior sale, lease or financing, or withdrawal without notice. We include projections, opinions, assumptions or estimates for example only, and they may not represent current or future performance of the property. You and your tax and legal advisors should conduct your own investigation of the property and transaction.

# Industrial for Lease

## 6200 MERRILL CREEK BUILDING

6200 23rd Drive W, Everett, WA 98203



### CONTACT

**Chris Peterson, SIOR, CCIM**

cpeterson@lee-associates.com

D 206.773.2678

**Richard Peterson**

rpeterson@lee-associates.com

D 206.773.2677

**Mason Cogle**

mcogle@lee-associates.com

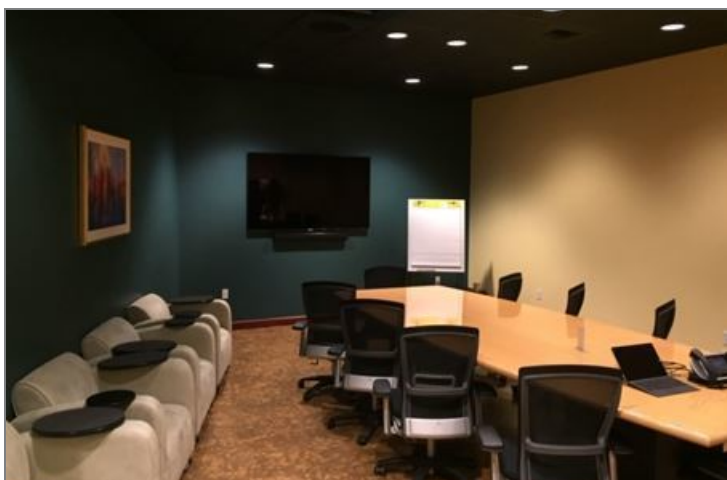
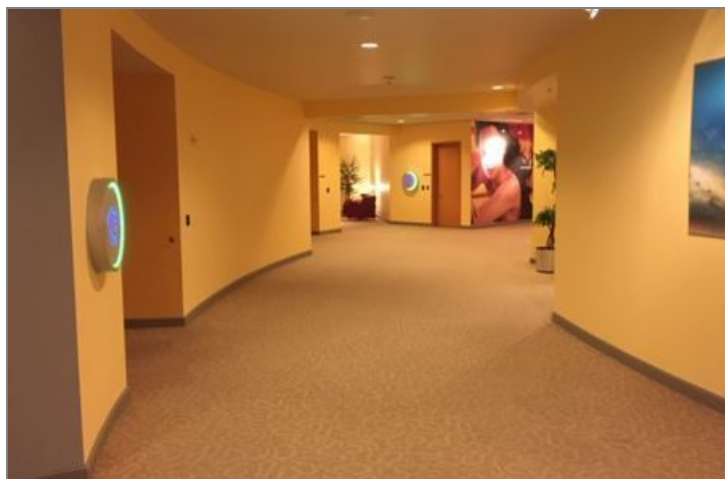
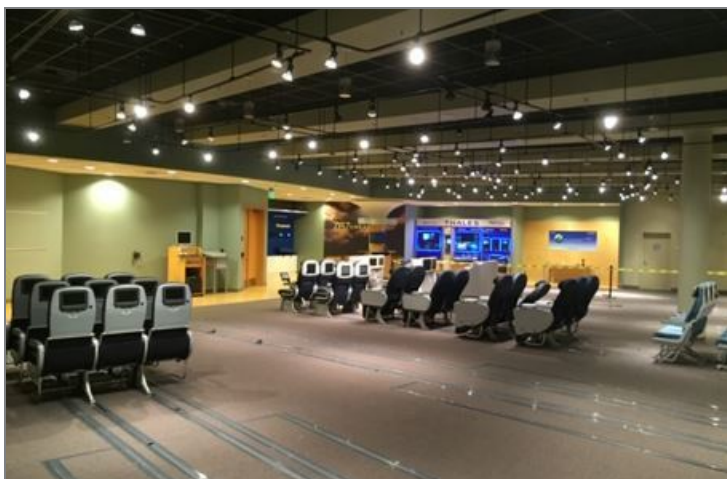
D 206.773.2687

We obtained the information above from sources we believe to be reliable. However, we have not verified its accuracy and make no guarantee, warranty or representation about it. It is submitted subject to the possibility of errors, omissions, change of price, rental or other conditions, prior sale, lease or financing, or withdrawal without notice. We include projections, opinions, assumptions or estimates for example only, and they may not represent current or future performance of the property. You and your tax and legal advisors should conduct your own investigation of the property and transaction.



# Industrial for Lease 6200 MERRILL CREEK BUILDING

6200 23rd Drive W, Everett, WA 98203



## CONTACT

**Chris Peterson, SIOR, CCIM**

[cpeterson@lee-associates.com](mailto:cpeterson@lee-associates.com)

D 206.773.2678

**Richard Peterson**

[rpeterson@lee-associates.com](mailto:rpeterson@lee-associates.com)

D 206.773.2677

**Mason Cogle**

[mcogle@lee-associates.com](mailto:mcogle@lee-associates.com)

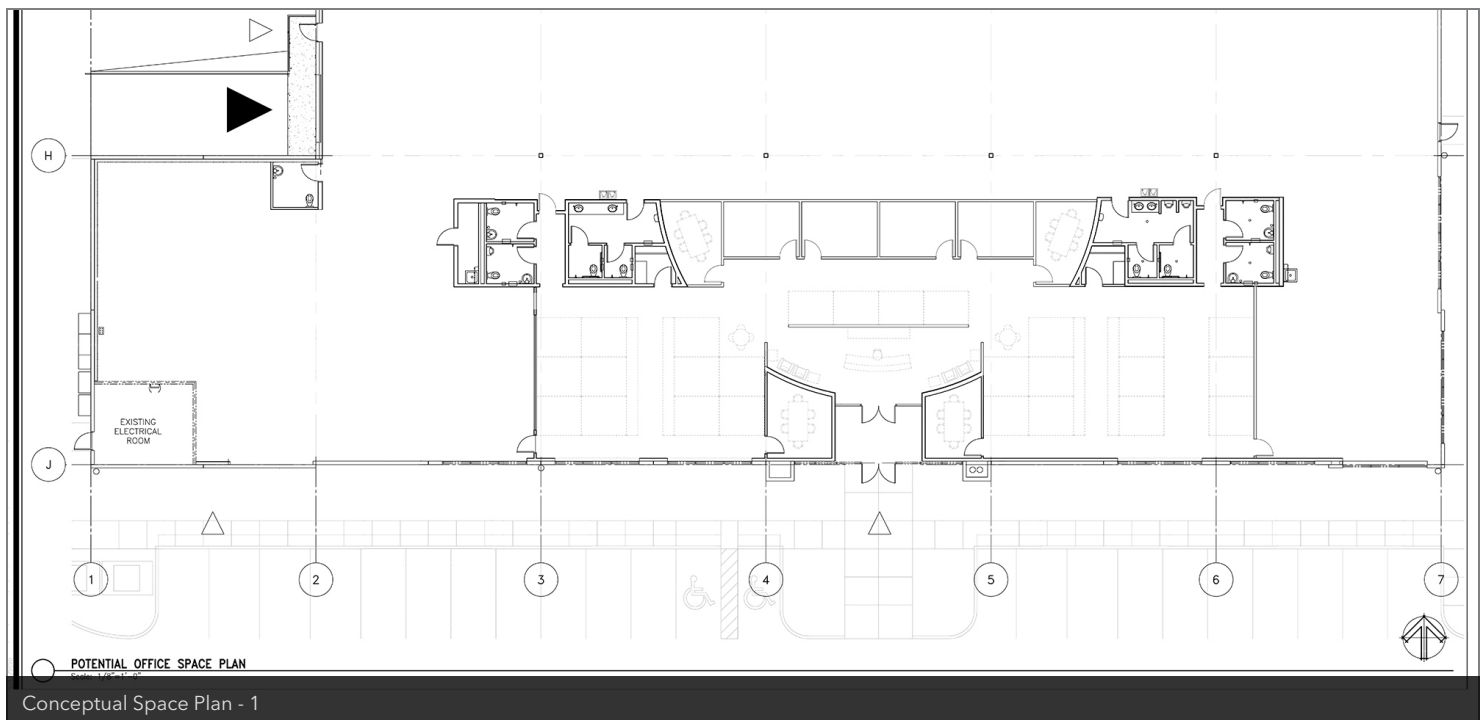
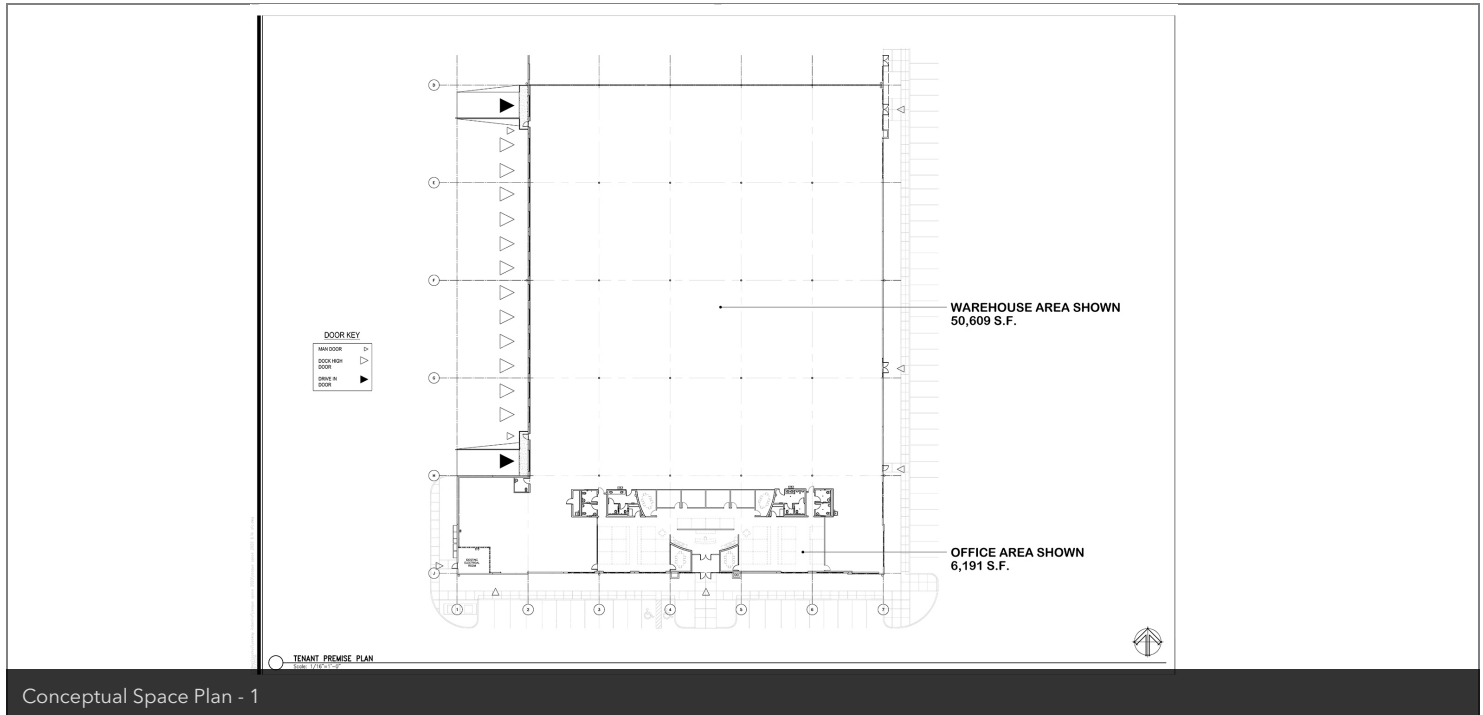
D 206.773.2687

We obtained the information above from sources we believe to be reliable. However, we have not verified its accuracy and make no guarantee, warranty or representation about it. It is submitted subject to the possibility of errors, omissions, change of price, rental or other conditions, prior sale, lease or financing, or withdrawal without notice. We include projections, opinions, assumptions or estimates for example only, and they may not represent current or future performance of the property. You and your tax and legal advisors should conduct your own investigation of the property and transaction.

# Industrial for Lease

## 6200 MERRILL CREEK BUILDING

6200 23rd Drive W, Everett, WA 98203



### CONTACT

**Chris Peterson, SIOR, CCIM**  
cpeterson@lee-associates.com  
D 206.773.2678

**Richard Peterson**  
rpeterson@lee-associates.com  
D 206.773.2677

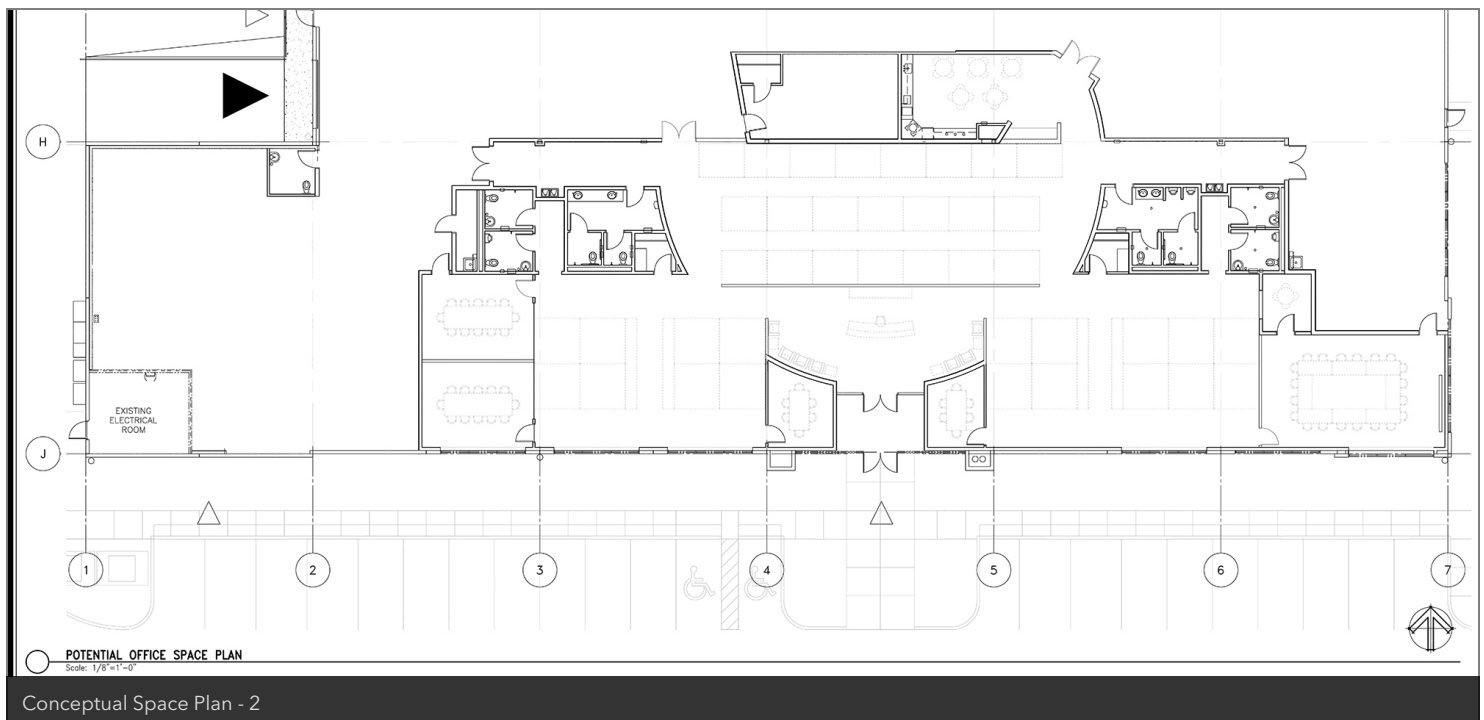
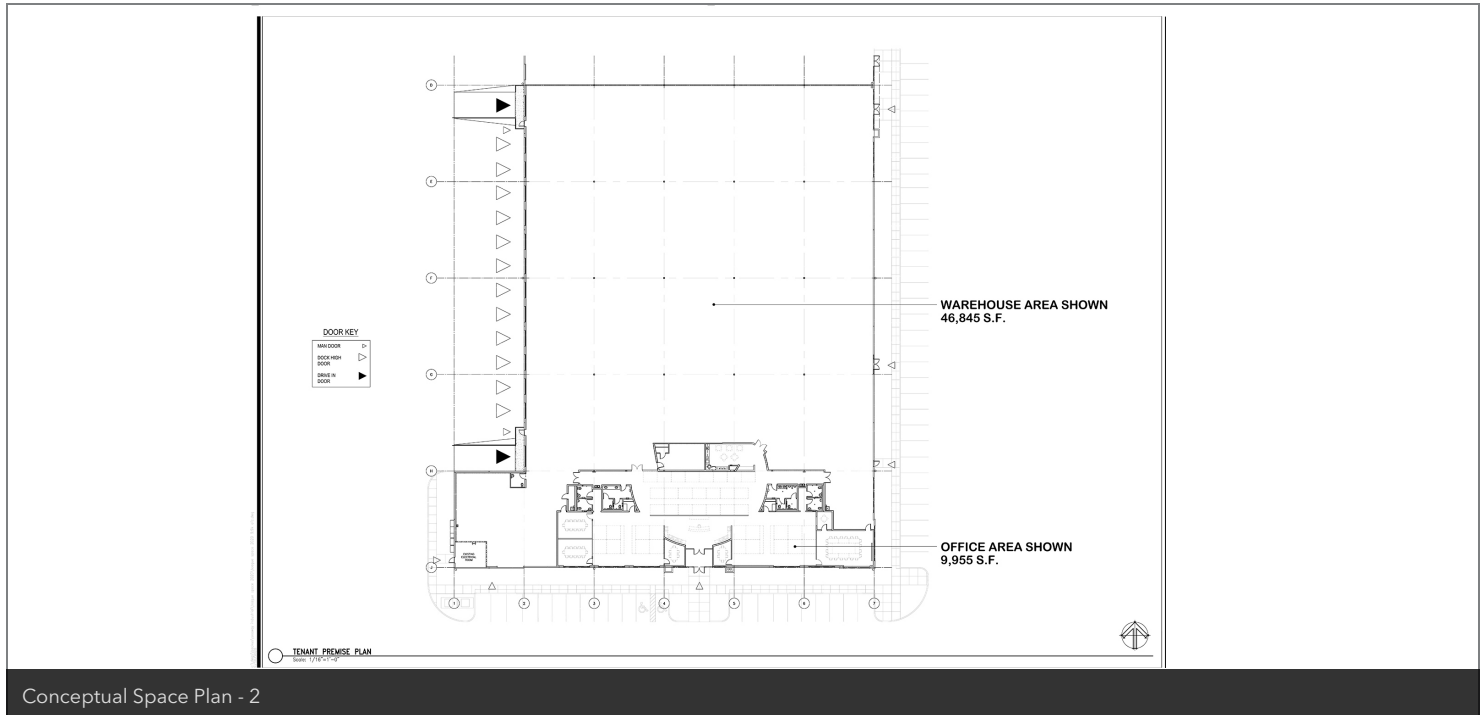
**Mason Cogle**  
mcogle@lee-associates.com  
D 206.773.2687

We obtained the information above from sources we believe to be reliable. However, we have not verified its accuracy and make no guarantee, warranty or representation about it. It is submitted subject to the possibility of errors, omissions, change of price, rental or other conditions, prior sale, lease or financing, or withdrawal without notice. We include projections, opinions, assumptions or estimates for example only, and they may not represent current or future performance of the property. You and your tax and legal advisors should conduct your own investigation of the property and transaction.

# Industrial for Lease

## 6200 MERRILL CREEK BUILDING

6200 23rd Drive W, Everett, WA 98203



### CONTACT

**Chris Peterson, SIOR, CCIM**

cpeterson@lee-associates.com

D 206.773.2678

**Richard Peterson**

rpeterson@lee-associates.com

D 206.773.2677

**Mason Cogle**

mcogle@lee-associates.com

D 206.773.2687

We obtained the information above from sources we believe to be reliable. However, we have not verified its accuracy and make no guarantee, warranty or representation about it. It is submitted subject to the possibility of errors, omissions, change of price, rental or other conditions, prior sale, lease or financing, or withdrawal without notice. We include projections, opinions, assumptions or estimates for example only, and they may not represent current or future performance of the property. You and your tax and legal advisors should conduct your own investigation of the property and transaction.