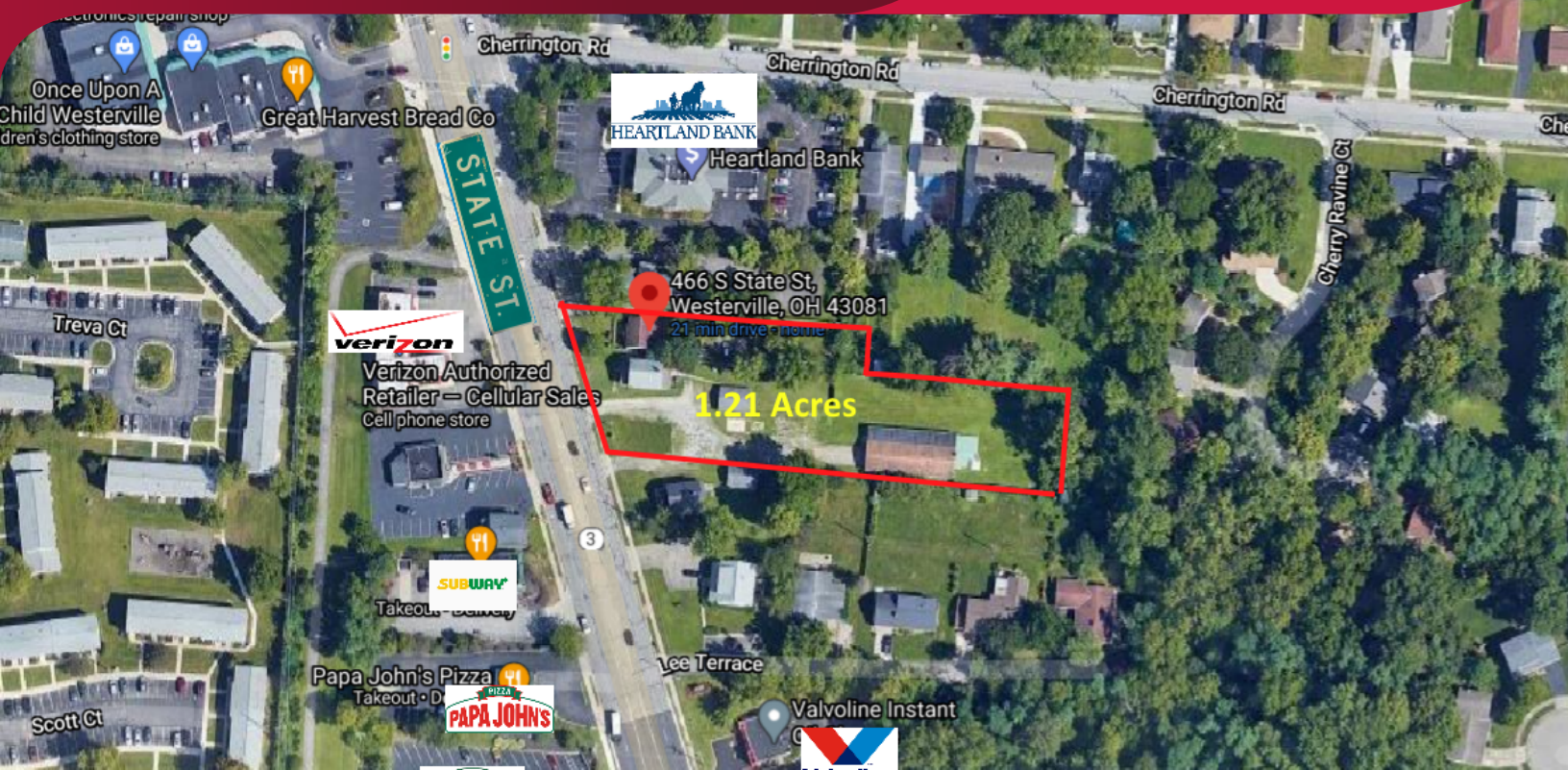


LAND FOR SALE

466-476 STATE ST

Westerville, OH 43081



ECONOMIC DATA

SALE PRICE: Call For Info

ACREAGE: 1.21 Acres

PROPERTY INFORMATION

COUNTY: Franklin

MARKET: Westerville

LISTING DATA

COMMENTS:

There are additional parcels that are not currently listed that have the potential to be assimilated.



PROPERTY OVERVIEW

Redevelopment opportunity on State St. In Westerville, OH.

PROPERTY HIGHLIGHTS

- 1.21 Acre redevelopment opportunity
- Ideal site for Multifamily/ Restaurant.

Matt Byrne
matt.byrne@lee-associates.com
C 614.206.1770

Chip Sergakis
chip.sergakis@lee-associates.com
C 614.458.8238

All information furnished regarding property for sale, rental or financing is from sources deemed reliable, but no warranty or representation is made to the accuracy thereof and same is submitted to errors, omissions, change of price, rental or other conditions prior to sale, lease or financing or withdrawal without notice. No liability of any kind is to be imposed on the broker herein.

LAND FOR SALE

466 STATE ST

Westerville, OH 43081



Matt Byrne
matt.byrne@lee-associates.com
C 614.206.1770

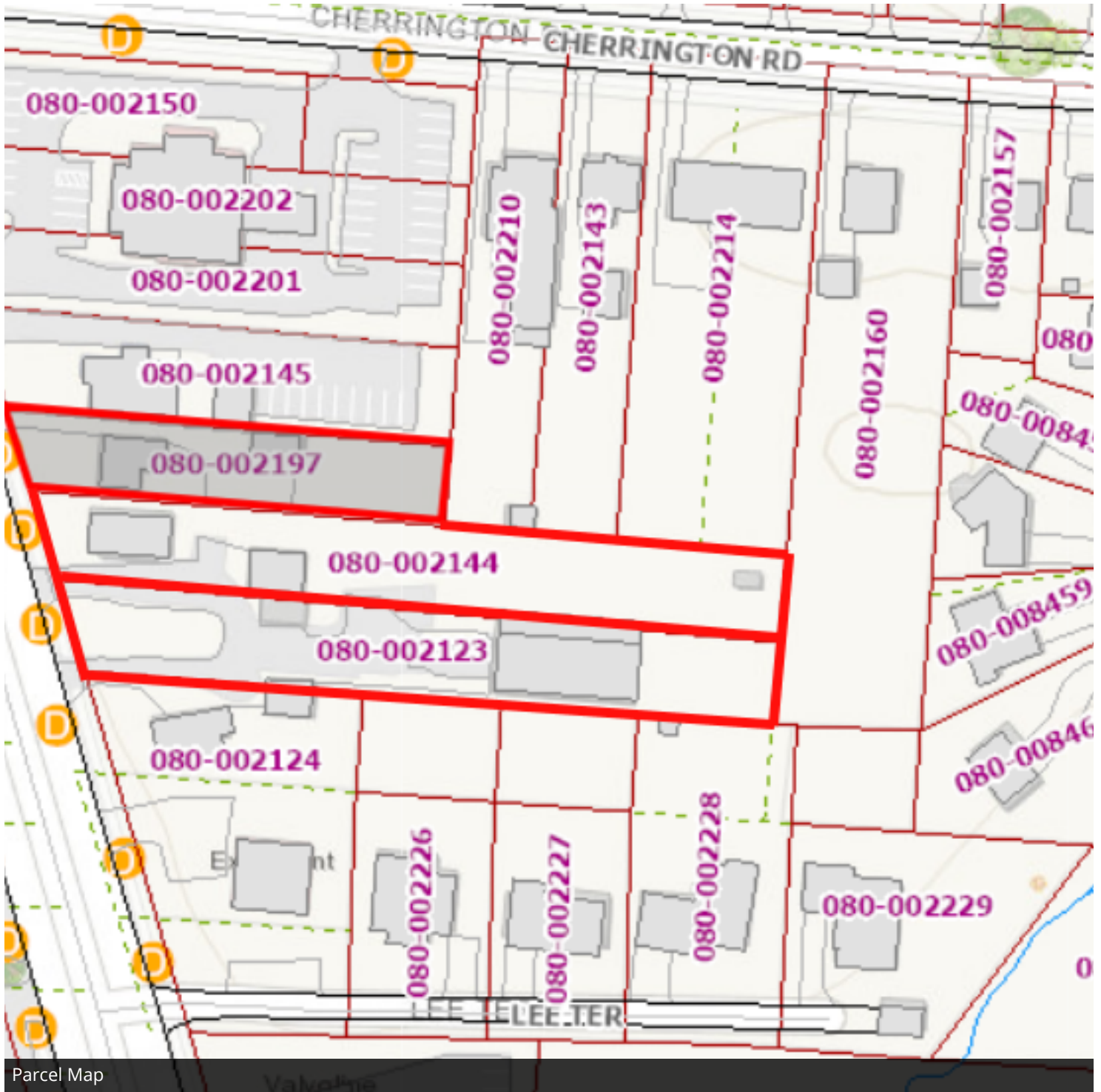
Chip Sergakis
chip.sergakis@lee-associates.com
C 614.458.8238

All information furnished regarding property for sale, rental or financing is from sources deemed reliable, but no warranty or representation is made to the accuracy thereof and same is submitted to errors, omissions, change of price, rental or other conditions prior to sale, lease or financing or withdrawal without notice. No liability of any kind is to be imposed on the broker herein.

LAND FOR SALE

466 STATE ST

Westerville, OH 43081

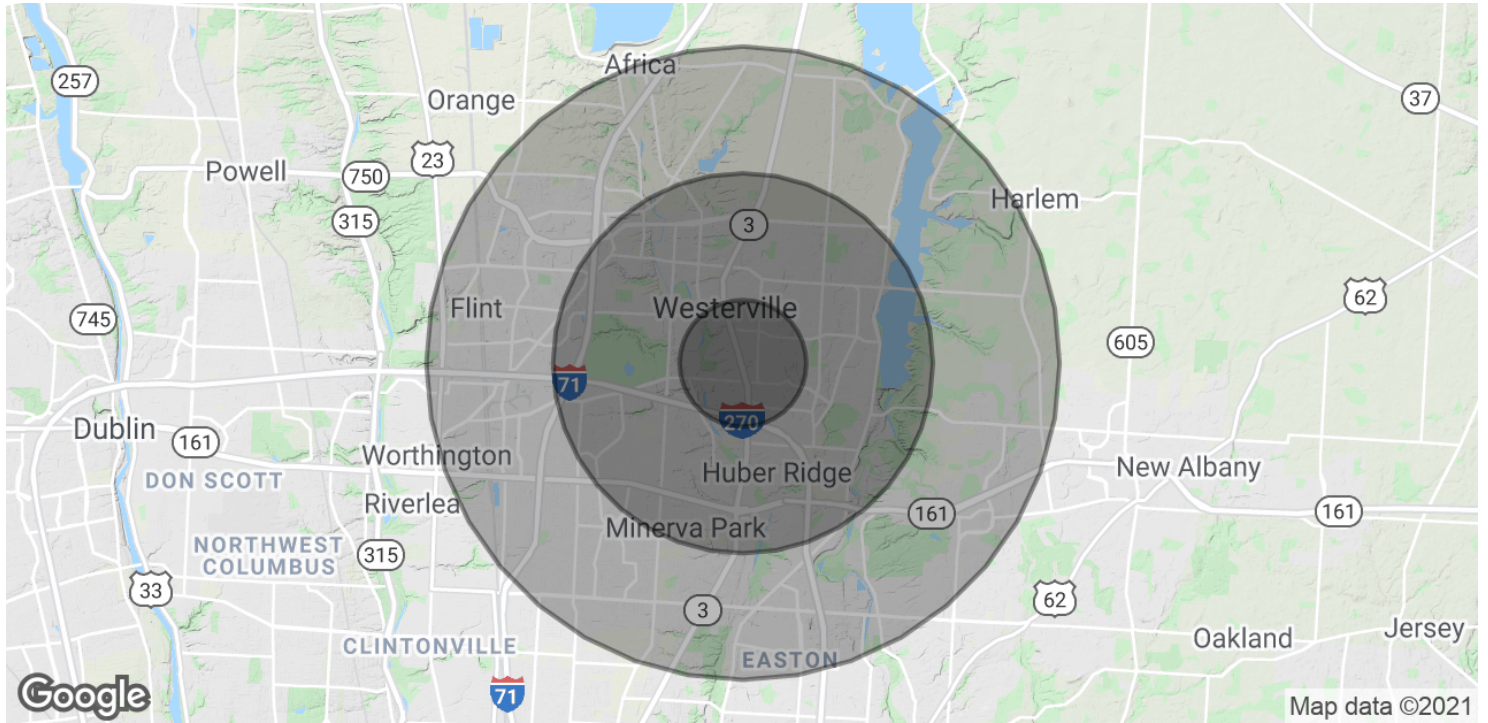


Matt Byrne
matt.byrne@lee-associates.com
C 614.206.1770

Chip Sergakis
chip.sergakis@lee-associates.com
C 614.458.8238

All information furnished regarding property for sale, rental or financing is from sources deemed reliable, but no warranty or representation is made to the accuracy thereof and same is submitted to errors, omissions, change of price, rental or other conditions prior to sale, lease or financing or withdrawal without notice. No liability of any kind is to be imposed on the broker herein.

LAND FOR SALE
466 STATE ST
 Westerville, OH 43081



POPULATION	1 MILE	3 MILES	5 MILES
Total Population	10,400	92,749	216,047
Average age	36.2	36.0	35.2
Average age (Male)	35.1	35.1	34.4
Average age (Female)	37.4	37.0	36.1

HOUSEHOLDS & INCOME	1 MILE	3 MILES	5 MILES
Total households	3,958	36,251	85,628
# of persons per HH	2.6	2.6	2.5
Average HH income	\$73,339	\$74,513	\$72,929
Average house value	\$189,727	\$200,434	\$209,538

* Demographic data derived from 2010 US Census

Matt Byrne
 matt.byrne@lee-associates.com
 C 614.206.1770

Chip Sergakis
 chip.sergakis@lee-associates.com
 C 614.458.8238

All information furnished regarding property for sale, rental or financing is from sources deemed reliable, but no warranty or representation is made to the accuracy thereof and same is submitted to errors, omissions, change of price, rental or other conditions prior to sale, lease or financing or withdrawal without notice. No liability of any kind is to be imposed on the broker herein.