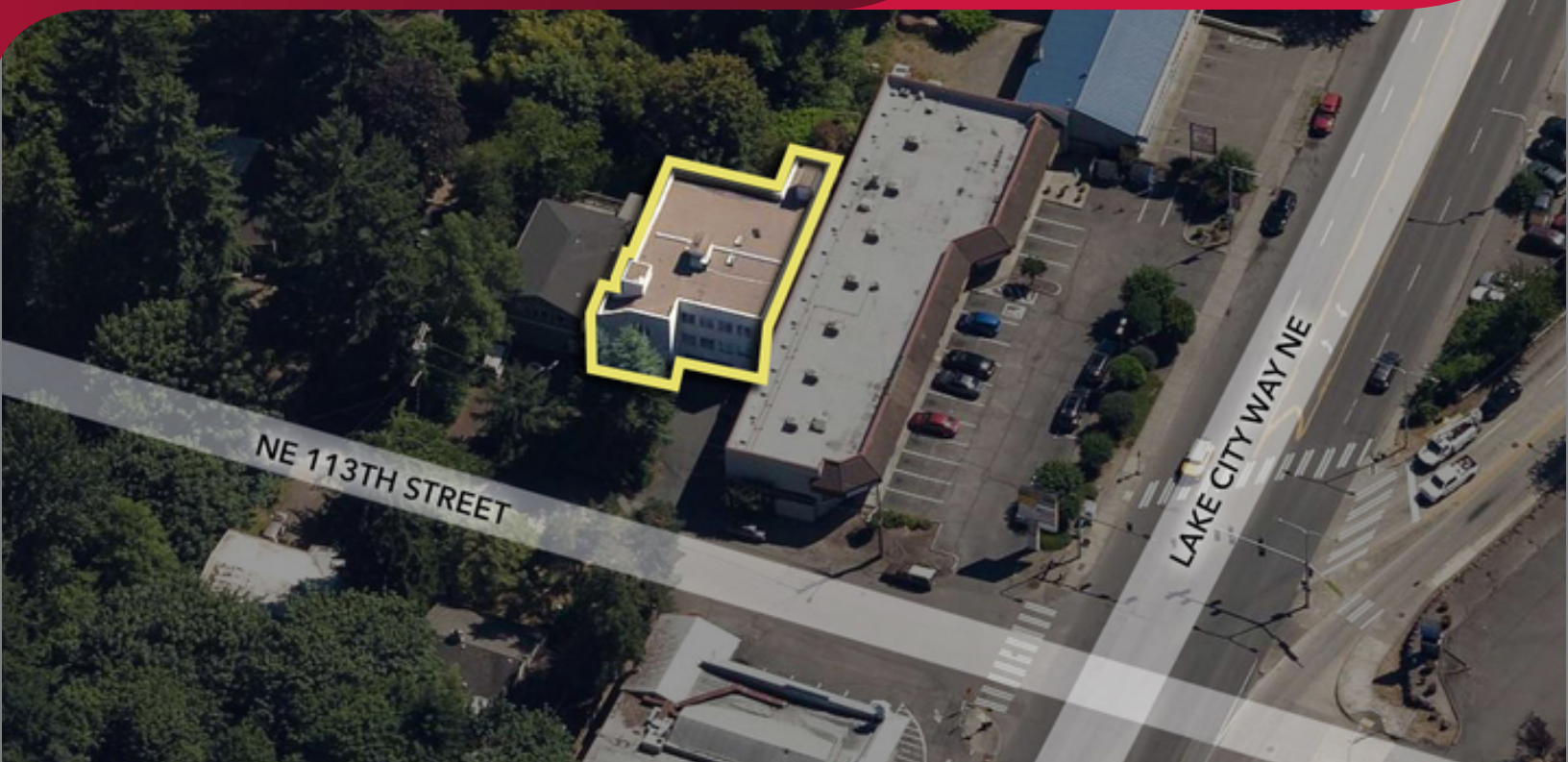


Office for Lease MELVAN TOWER

2611 NE 113th Street, Seattle, WA 98125



LISTING DATA

AVAILABLE SF:	1,688 - 2,488 SF
LEASE RATE:	\$19.50 / SF / Yr (Gross)
TOTAL BLDG SF:	7,338 SF
YEAR BUILT:	1992
ZONING:	NC3-40

PROPERTY HIGHLIGHTS

- Whole 2nd floor available or option to divide
- Good mix of private offices & open space
- Kitchenette
- Men's/Women's restrooms
- Elevator & stair access
- Free Parking

COMMENTS

Melvan Tower offers great professional office space in an easily accessible location off of Lake City Way, next to Print Fusion, Tubs Gourmet Subs and other restaurant options. Only 15 minutes from downtown Seattle via I-5.



CONTACT

John Brussa

jbrussa@lee-associates.com
D 206.773.2675

Sean Durkin, SIOR, MSRE, CCIM

sdurkin@lee-associates.com
D 206.773.2682

Amanda Hahnemann, CCIM

ahahnemann@lee-associates.com
D 206.773.2691

We obtained the information above from sources we believe to be reliable. However, we have not verified its accuracy and make no guarantee, warranty or representation about it. It is submitted subject to the possibility of errors, omissions, change of price, rental or other conditions, prior sale, lease or financing, or withdrawal without notice. We include projections, opinions, assumptions or estimates for example only, and they may not represent current or future performance of the property. You and your tax and legal advisors should conduct your own investigation of the property and transaction.