



60 BRADY STREET  
SAN FRANCISCO, CA 94103

## FOR LEASE

STAND-ALONE CREATIVE  
BUILDING IN WESTERN  
SOMA/INNER MISSION

ROBERT MILLER  
+1 415 716 1550  
rmiller@hcmcommercial.com  
CA License No. 01157668

REMINGTON HEATLEY  
+1 650 430 1562  
rheatley@hcmcommercial.com  
CA License No. 01907186

**H | C | M**

Commercial Properties

1234 Mariposa Street, San Francisco, California 94107  
[www.hcmcommercial.com](http://www.hcmcommercial.com)

# SUMMARY

SIZE ± 6,500 RSF Ground Floor  
± 1,000 RSF Mezzanine  
± 7,500 RSF Total

AVAILABILITY Now

TERM Flexible

ZONING NCT-3 (Moderate Scale  
Neighborhood Commercial Transit District)

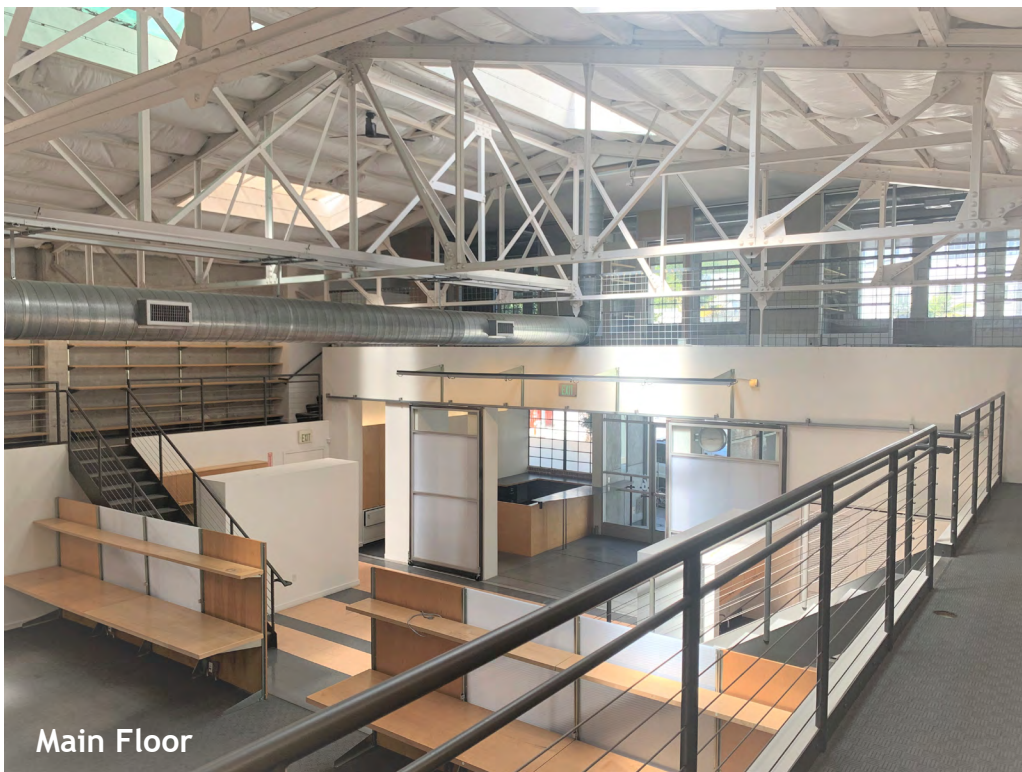
LEASE RATE \$32 psf/annum, IG



# HIGHLIGHTS

- Stand-Alone Building
- Creative Features
  - *Sandblasted Concrete Walls*
  - *Exposed Metal Trusses*
  - *Great Natural Light*
  - *High-End Metal Railings and Finishes*
- Four (4) Restrooms
- 20'+ Ceilings
- Skylights
- Formal Reception
- Large Conference Room
- Three (3) Small Meeting Rooms
- Mostly Open Plan
- Built-In Shelving Units and Storage
- Two (2) Kitchenettes
- 1,500 +/- SF of Shop/Warehouse Space





Main Floor



Reception Area



Shop Space

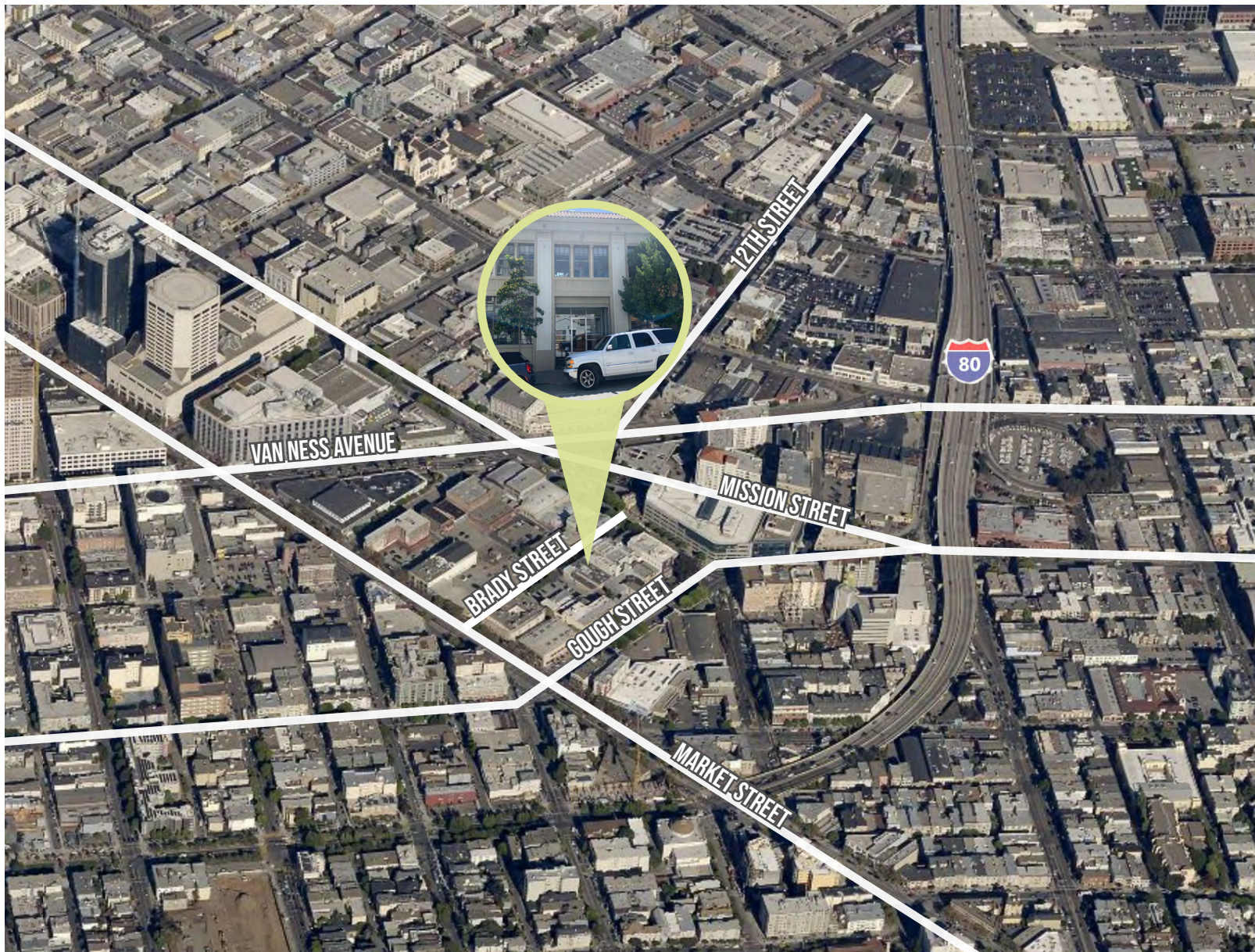


Kitchenette



Mezzanine Meeting Rooms

# LOCATION OVERVIEW



## CONTACT US:

ROBERT MILLER  
Lic.01157668

P: 415.716.1550  
rmiller@hcmcommercial.com

REMINGTON HEATLEY  
Lic.01907186

P: 650.430.1562  
rheatley@hcmcommercial.com