

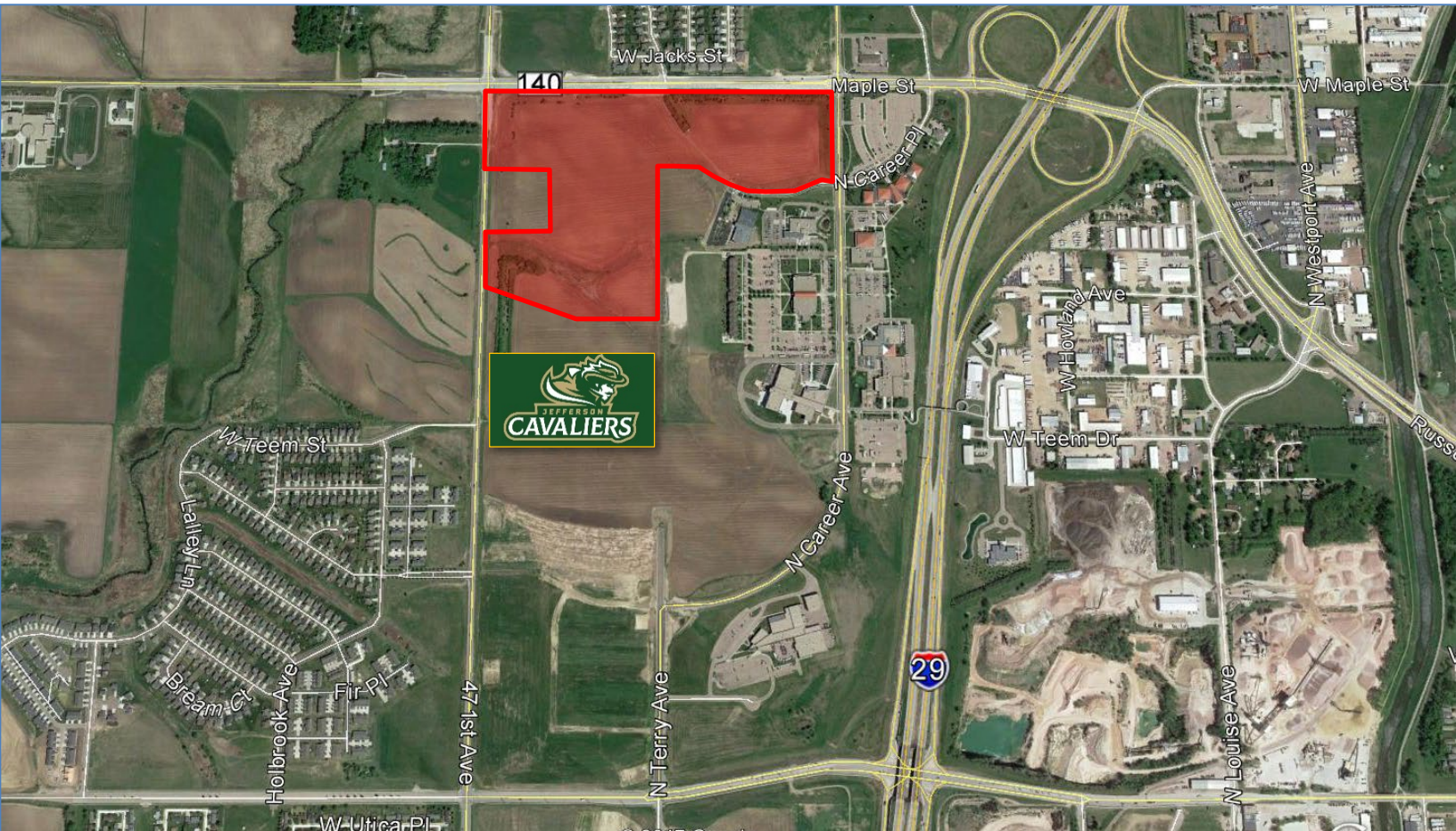
**BOYCE PARK (NORTH) LAND
NORTH MARION ROAD
SIOUX FALLS, SD**

Real Estate Services

Bender
COMMERCIAL

**FOR SALE
DEVELOPMENT LAND**

We open doors.



PROPERTY FEATURES:

- **Up to 56.9 acres (Can be Subdivided)**
- **For Sale: Contact Broker for Price.**
- Future commercial, office and industrial lots available in Boyce Park in northwest Sioux Falls.
- Property to be delivered to Buyer, rough graded and build-ready.
- Utilities stubbed to each lot.
- Development engineering plan completed.
- Seller to pay platting fees and SCA for streets.
- Strategically located between Madison Street and Maple Street, adjacent to Southeastern Votech.
- Easy access to I-29 at Maple Street interchange.
- Contact broker for covenants and restrictions.

For More Information, Please Contact:

DOUGLAS BROCKHOUSE, SIOR
dbrock@benderco.com
(605) 782-1664

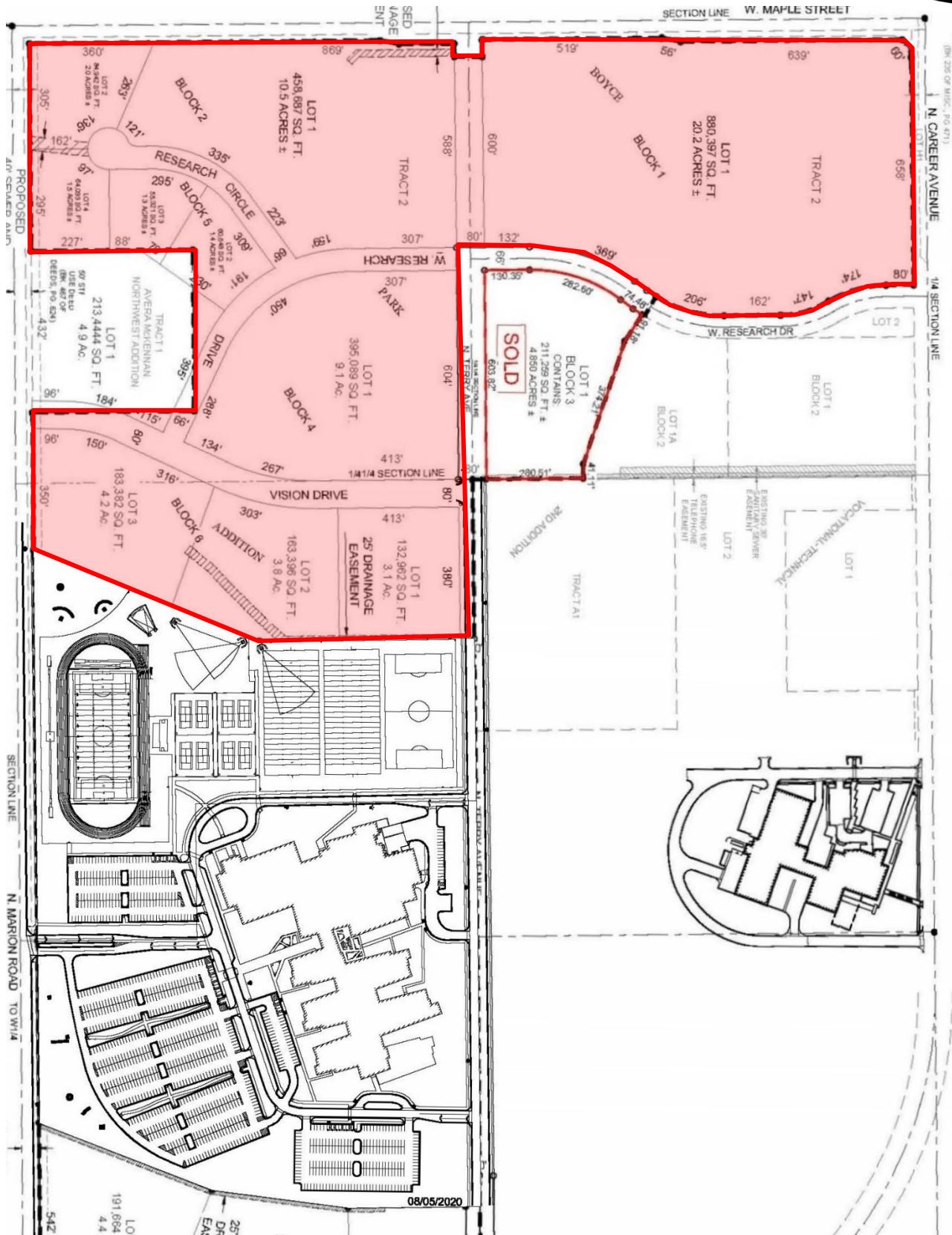
MICHAEL BENDER, CCIM, SIOR
michael@benderco.com
(605) 782-1662



**BOYCE PARK (NORTH) LAND
NORTH MARION ROAD
SIOUX FALLS, SD**

Real Estate Services

Bender
COMMERCIAL

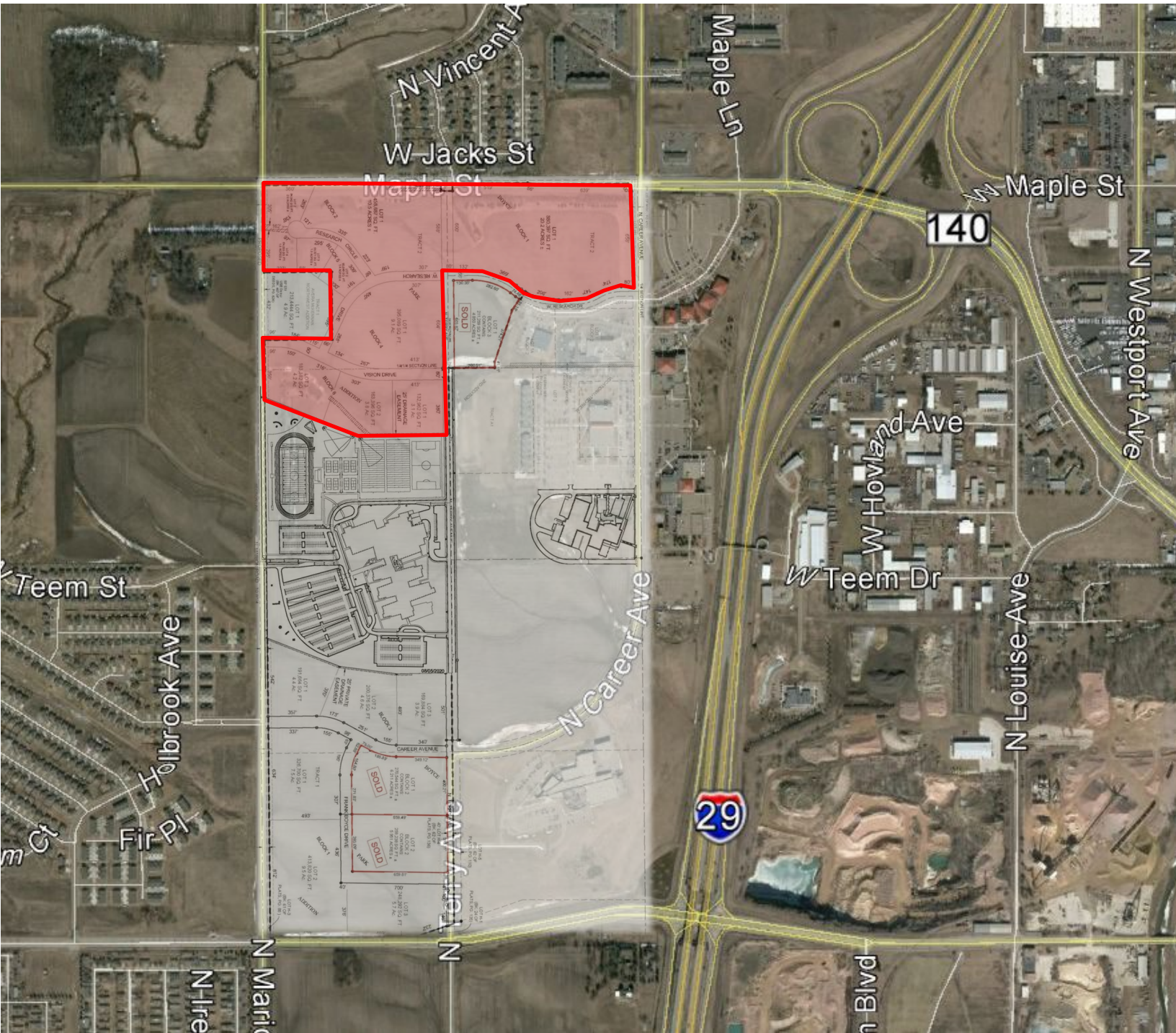


**BOYCE PARK (NORTH) LAND
NORTH MARION ROAD
SIOUX FALLS, SD**

Real Estate Services

Bender
COMMERCIAL

We open doors.



**BOYCE PARK (NORTH) LAND
NORTH MARION ROAD
SIOUX FALLS, SD**

Real Estate Services

Bender
COMMERCIAL

We open doors.

