

FOR SALE

VILLAGE MART

4800 River Rd, S Chesterfield, VA 23803



Sale Price Reduced

\$128,500

PROPERTY OVERVIEW

This quaint retail property is a 1,320 sf retail property situated on a 0.2 acre corner lot at River Road and Perdue Avenue in S Chesterfield.

OFFERING SUMMARY

Building Size:	1,320 SF
Available SF:	
Lot Size:	0.231 Acres
Price / SF:	\$97.35
Year Built:	1951
Zoning:	C2

PROPERTY HIGHLIGHTS

- .23 acre lot with room to grow
- Ample parking
- Signage
- Spacious convenience store with dining and gaming area
- In-store kitchen for cooking
- Refrigeration
- Restroom

TODD BUTTNER

Associate

410.382.7109

Todd.Buttner@joynercommercial.net

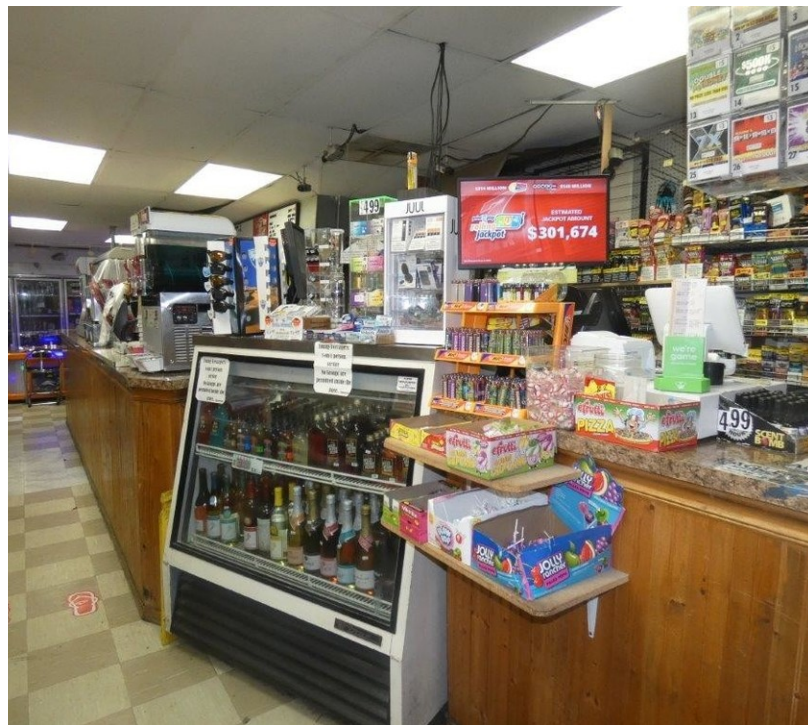
2727 ENTERPRISE PKWY, SUITE 102 | RICHMOND, VA 23294 | 804.270.9440



JOYNERCOMMERCIAL.NET

VILLAGE MART

4800 River Rd, S Chesterfield, VA 23803



TODD BUTTNER

Associate

410.382.7109

Todd.Buttner@joynercommercial.net

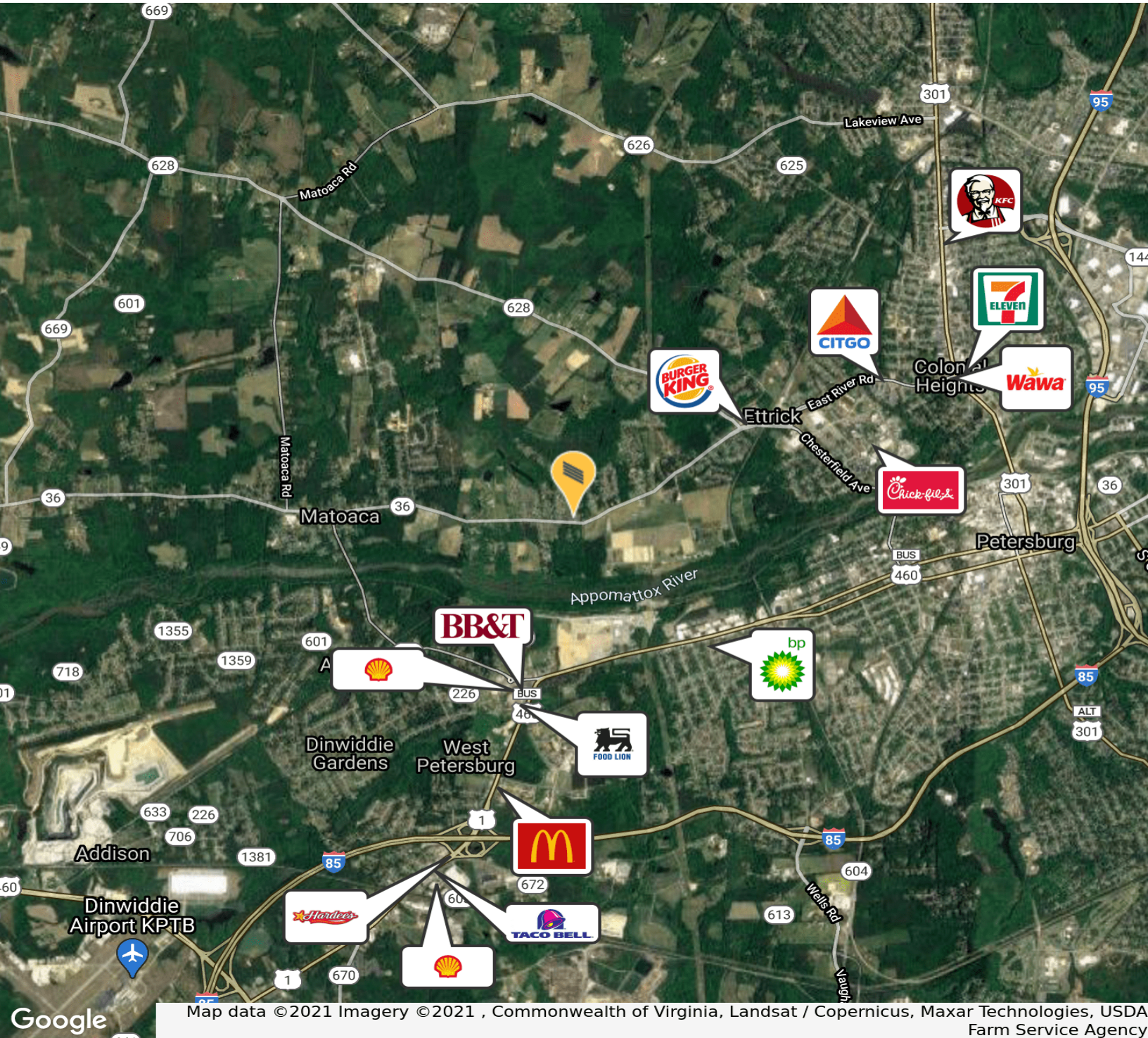
2727 ENTERPRISE PKWY, SUITE 102 | RICHMOND, VA 23294 | 804.270.9440



JOYNERCOMMERCIAL.NET

VILLAGE MART

4800 River Rd, S Chesterfield, VA 23803



Map data ©2021 Imagery ©2021 , Commonwealth of Virginia, Landsat / Copernicus, Maxar Technologies, USDA Farm Service Agency

TODD BUTTNER

Associate

410.382.7109

Todd.Buttner@joynercommercial.net

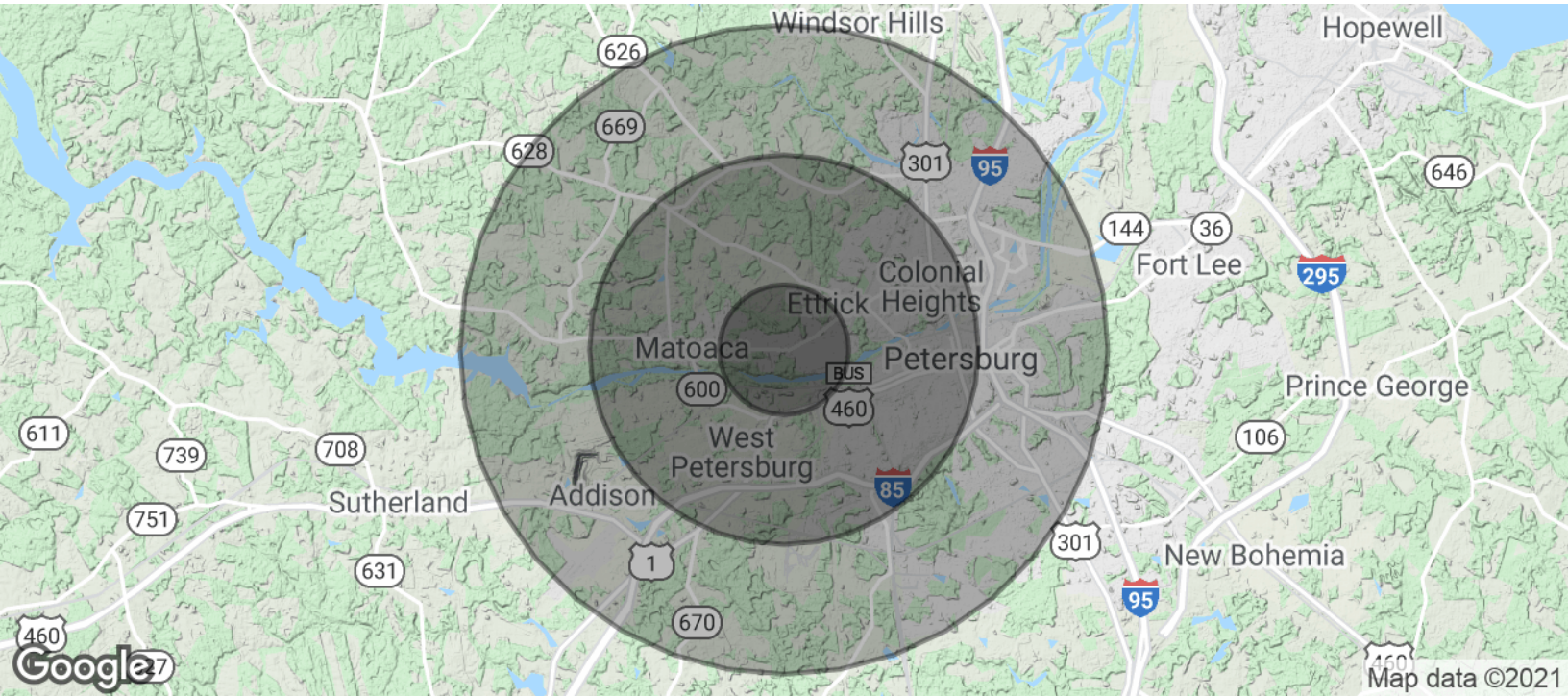
2727 ENTERPRISE PKWY, SUITE 102 | RICHMOND, VA 23294 | 804.270.9440



JOYNERCOMMERCIAL.NET

VILLAGE MART

4800 River Rd, S Chesterfield, VA 23803



POPULATION

	1 MILE	3 MILES	5 MILES
Total Population	2,747	31,713	76,641
Average age	40.9	36.0	37.6
Average age (Male)	40.7	34.3	35.4
Average age (Female)	40.4	37.6	39.9

HOUSEHOLDS & INCOME

	1 MILE	3 MILES	5 MILES
Total households	1,021	10,714	27,985
# of persons per HH	2.7	3.0	2.7
Average HH income	\$57,446	\$47,760	\$54,022
Average house value	\$166,303	\$167,633	\$165,188

* Demographic data derived from 2010 US Census

TODD BUTTNER

Associate

410.382.7109

Todd.Buttner@joynercommercial.net

2727 ENTERPRISE PKWY, SUITE 102 | RICHMOND, VA 23294 | 804.270.9440



JOYNERCOMMERCIAL.NET

FOR SALE

VILLAGE MART

4800 River Rd, S Chesterfield, VA 23803



OFFERING SUMMARY

Sale Price:	\$128,500
Building Size:	1,320 SF
Available SF:	
Price / SF:	\$97.35
Year Built:	1951
Zoning:	C2

PROPERTY OVERVIEW

This quaint retail property is a 1,320 sf retail property situated on a 0.2 acre corner lot at River Road and Perdue Avenue in S Chesterfield.

PROPERTY HIGHLIGHTS

- .23 acre lot with room to grow
- Ample parking
- Signage
- Spacious convenience store with dining and gaming area
- In-store kitchen for cooking
- Refrigeration
- Restroom

TODD BUTTNER

Associate

410.382.7109

Todd.Buttner@joynercommercial.net

2727 ENTERPRISE PKWY, SUITE 102 | RICHMOND, VA 23294 | 804.270.9440



JOYNERCOMMERCIAL.NET

VILLAGE MART

4800 River Rd, S Chesterfield, VA 23803

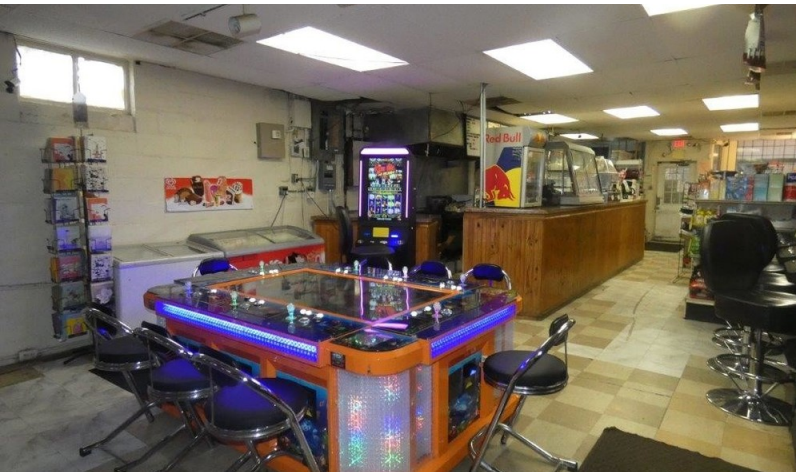
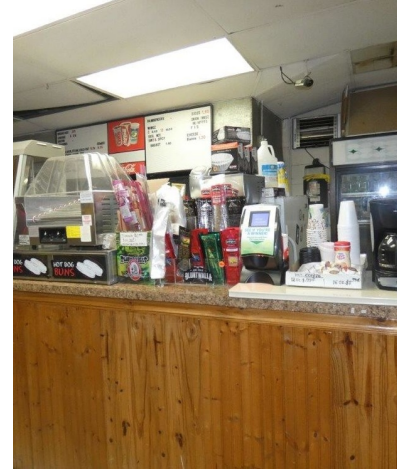
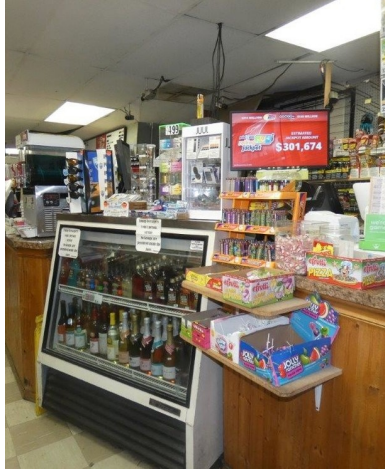
TENANT NAME	UNIT NUMBER	UNIT SIZE (SF)	LEASE START	LEASE END	ANNUAL RENT	% OF GLA	PRICE PER SF/YR
					\$0		
					\$0		
					\$0		
					\$0		
					\$0		
TOTALS/AVERAGES		0			\$0		

TODD BUTTNER
Associate
410.382.7109
Todd.Buttner@joynercommercial.net



VILLAGE MART

4800 River Rd, S Chesterfield, VA 23803



TODD BUTTNER

Associate

410.382.7109

Todd.Buttner@joynercommercial.net

2727 ENTERPRISE PKWY, SUITE 102 | RICHMOND, VA 23294 | 804.270.9440



JOYNERCOMMERCIAL.NET