

**NW SIOUX FALLS DEVELOPMENT LAND
6600 WEST MAPLE STREET
SIOUX FALLS, SD**

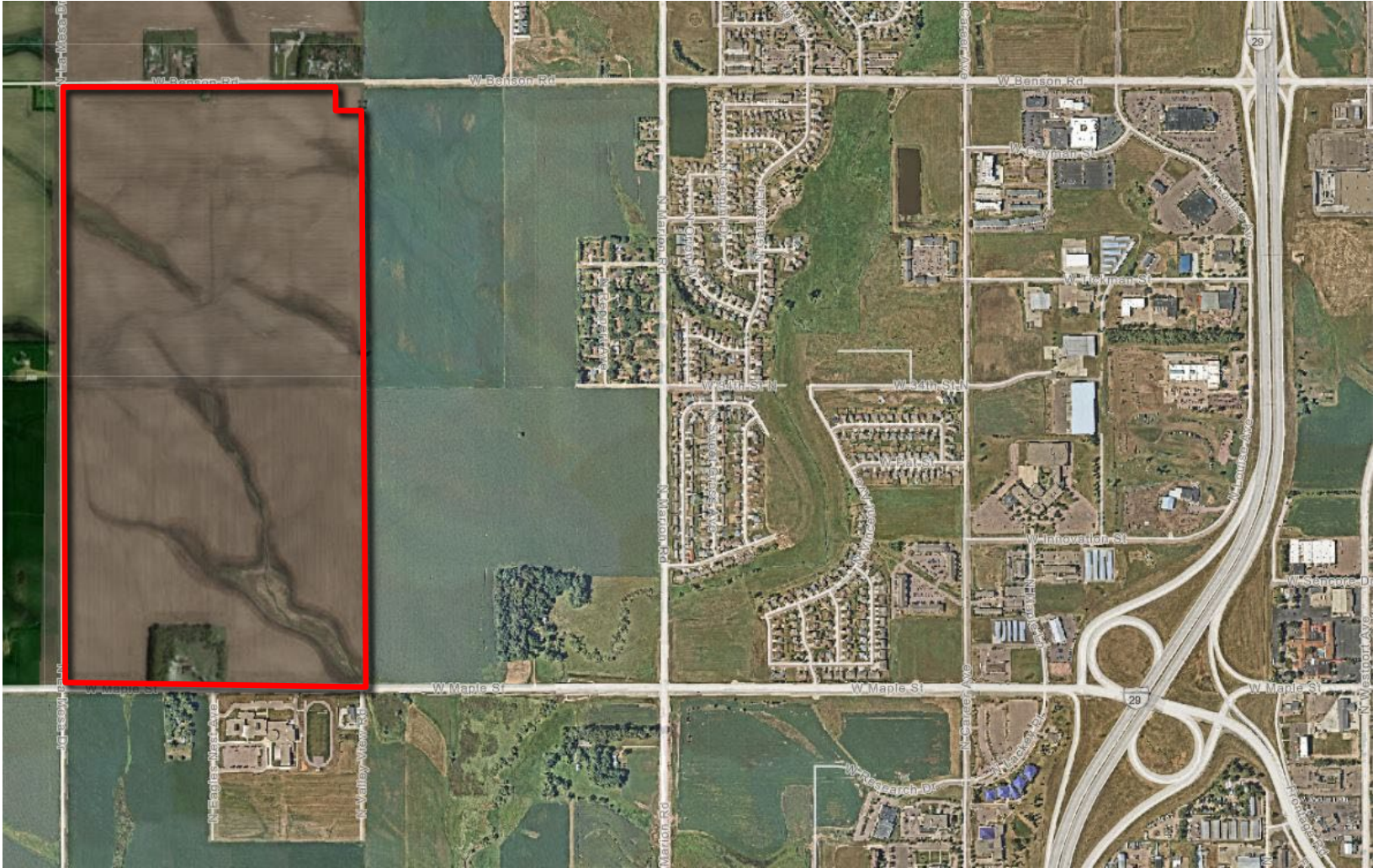
Real Estate Services

Bender
COMMERCIAL

FOR SALE

DEVELOPMENT LAND – NORTHWEST SIOUX FALLS

We open doors.



PROPERTY FEATURES:

- **315.64 acres**
- **For Sale: \$45,000/acre**
- Development land located on the corner of Maple Street and La Mesa Avenue in northwest Sioux Falls.
- Located near George McGovern Middle School and future Jefferson High School.
- Maple Street/I-29 interchange is approximately 1.5 miles to the east.
- Could be subdivided.
- Sewer available per the City of Sioux Falls – contact broker for details.

For More Information, Please Contact:

ROB KURTENBACH
rk@benderco.com
(605) 782-1674

MICHAEL BENDER, CCIM, SIOR
michael@benderco.com
(605) 782-1662

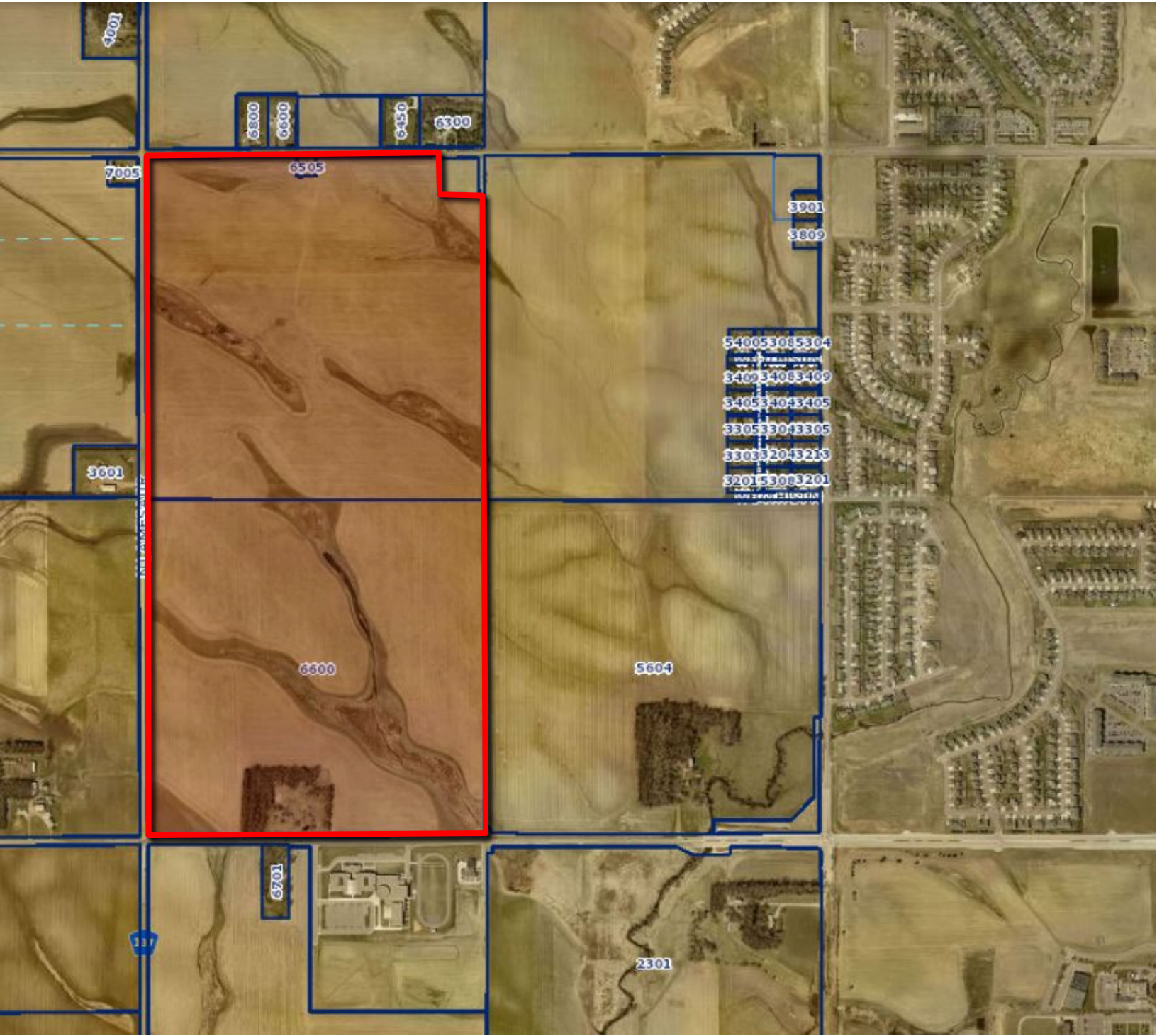


NW SIOUX FALLS DEVELOPMENT LAND
6600 WEST MAPLE STREET
SIOUX FALLS, SD

Real Estate Services

Bender
COMMERCIAL

We open doors.



NW SIOUX FALLS DEVELOPMENT LAND
6600 WEST MAPLE STREET
SIOUX FALLS, SD

Real Estate Services

Bender
COMMERCIAL

We open doors.

