

600 DAKOTA ST.
SUITES C AND F
CRYSTAL LAKE, IL 60012

FOR LEASE

MLS # 11161373

July 19, 2021



OFFICE SUITES
252 SF AND 1,408 SF

\$14.60 psf Gross

DESCRIPTION

SPECIFICATIONS

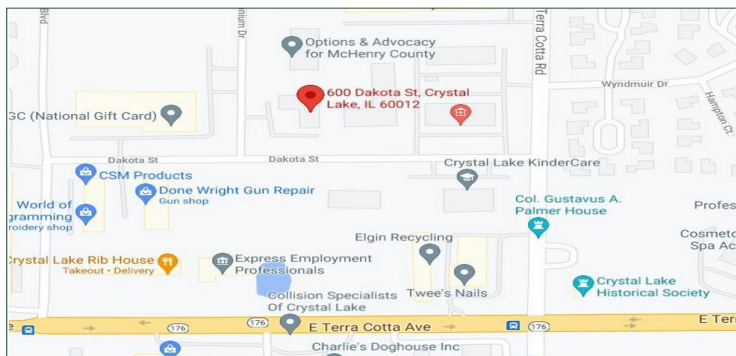
Professional Office Suites
Furnished

Attractive, furnished, office suites, located in a 9,622 SF multi-tenant masonry office building, in a business park setting. Monument signage available.

SUITE F: 1,408 SF with 4-5 private offices, reception, IT / copy room.

SUITE C: 252 SF with unique angled wall. Could be used as managers office, showroom or extra storage.

Both suites could be bundled together. See layout and photos.



Building Size	9,622 SF
Land Size	1.05 AC
Year Built	2003
HVAC System	GFA / Central Air
Electrical	200 AMP
Sprinklers	No
Washrooms	2 (common)
Ceiling Height	9 FT
Parking	47 spaces
Sewer/Water	City
Zoning	O
CAM & Taxes	Included
Utilities	Paid by Tenant
Possession Date	Negotiable
Lease Term	3-5 years
PIN	14-33-276-014

No warranty or representation is made as to the accuracy of the foregoing information. Terms of sale or lease and availability are subject to change or withdrawal without notice. This document is for information purposes only. No offer of sub-agency is being made.



- Industrial
- Commercial
- Office
- Land
- Business

[CLICK HERE](#)
to view our website

9225 S. IL Route 31
Lake in the Hills, IL 60156
www.PremierCommercialRealty.com
Office: 847-854-2300 | Fax: 847-854-2380

BRIAN COWELL
Associate Broker

Office: 847-854-2300 Ext 18
Cell: 815-529-7890

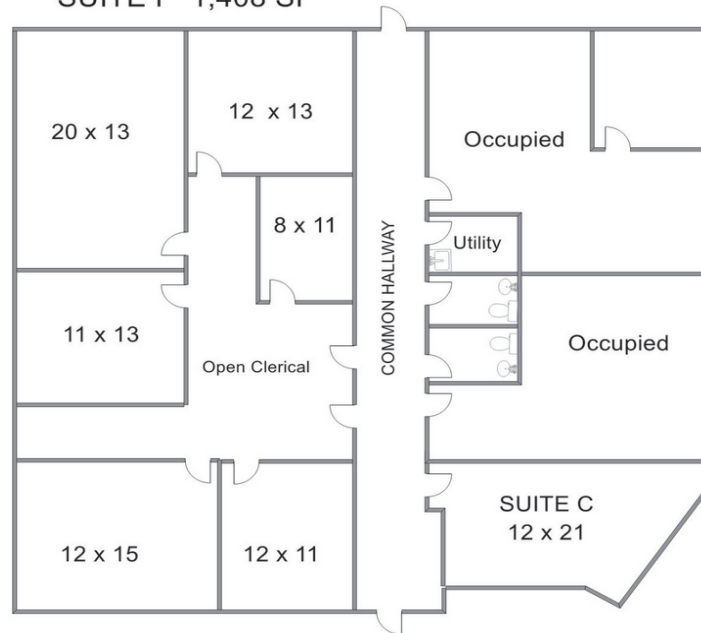
BrianC@PremierCommercialRealty.com

600 DAKOTA ST.
SUITES C AND F
CRYSTAL LAKE, IL 60012

FOR LEASE



SUITE F 1,408 SF



Measurements Approximate

PREMIER
COMMERCIAL REALTY

- Industrial
- Commercial
- Office
- Land
- Business

[CLICK HERE](#)
to view our website

9225 S. IL Route 31
Lake in the Hills, IL 60156
www.PremierCommercialRealty.com
Office: 847-854-2300 | Fax: 847-854-2380