

1110 S. MAIN STREET (ROUTE 31) ALGONQUIN, IL 60102

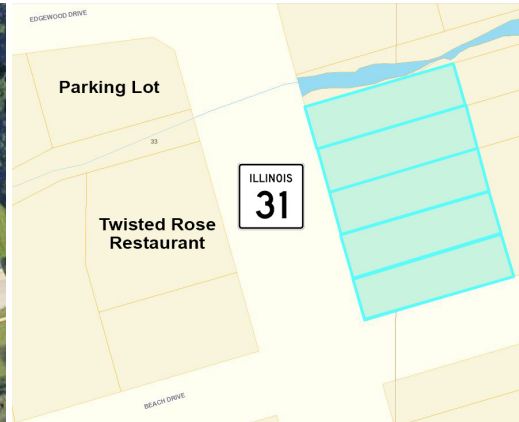
FOR SALE

MLS # 10731917

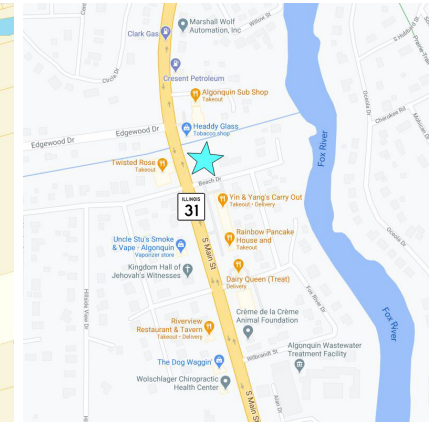
October 16, 2020



Aerial



Plat Map



Map

VACANT LAND — 0.64 ACRES

\$155,000 (\$5.56 psf)

DESCRIPTION

5 contiguous commercial (B2 zoned) lots with 200' on Route 31, directly across from Twisted Rose Restaurant. .64 acre can be purchased with that restaurant (also for sale). Water/sewer on the west (opposite) side of Route 31. Has been used as overflow parking for the restaurant but could accommodate another business/building. Only 5.56 psf.

SPECIFICATIONS

Description	5 Contiguous Commercial Lots
Land Size	.64 Acre (27,878 SF)
Topography	Level
Environmental Status	TBA
Utilities	Nearby
Sewer/Water	City
Frontage	200' on Route 31
Dimensions	
Zoning	B2
Real Estate Taxes	\$4,454.52 (2019)
PIN Numbers	19-33-478-001 19-33-478-002 19-33-478-003 19-34-306-003 19-34-306-004
Possession	At Closing

DEMOGRAPHICS

	1 Mile	3 Miles	5 Miles
Population	7,068	59,904	150,135
Avg Household Income	\$94,613	\$87,683	\$90,193
Daily Traffic Counts: 15,900 (Route 31)			

No warranty or representation is made as to the accuracy of the foregoing information. Terms of sale or lease and availability are subject to change or withdrawal without notice. This document is for information purposes only. No offer of sub-agency is being made.

PREMIER
COMMERCIAL REALTY

- Industrial
- Commercial
- Office
- Land
- Business

[CLICK HERE](#)
to view our website

BRUCE KAPLAN
Senior Broker
Office: 847-854-2300 Ext 20
Cell: 847-507-1759

BruceK@PremierCommercialRealty.com

9225 S. IL Route 31
Lake in the Hills, IL 60156
www.PremierCommercialRealty.com
Office: 847-854-2300 | Fax: 847-854-2380

KEVIN KAPLAN
Associate Broker
Office: 847-854-2300 Ext 13
Cell: 309-261-0920

KevinK@PremierCommercialRealty.com