

SUBLEASE AVAILABLE Stemmons Fwy Submarket

AVAILABLE THRU DEC 2022



2,084 RSF

\$11.00 / SF

Gross

SUITE 150



1720 Regal Row DALLAS, TX 75235

Property Highlights - 2,084 RSF available through Dec 2022

- ▶ Reception with welcome client window
- ▶ Conference Room
- ▶ Break Room with sink
- ▶ 5 Private Offices
- ▶ On-site Deli
- ▶ Ample Parking:
(reserved available at \$50/space per month)
- ▶ Perfect for: Medical/Health Care, Staffing,
Training, Personal/Business Services or
any small business

Contact Me:



Blake LeGrow

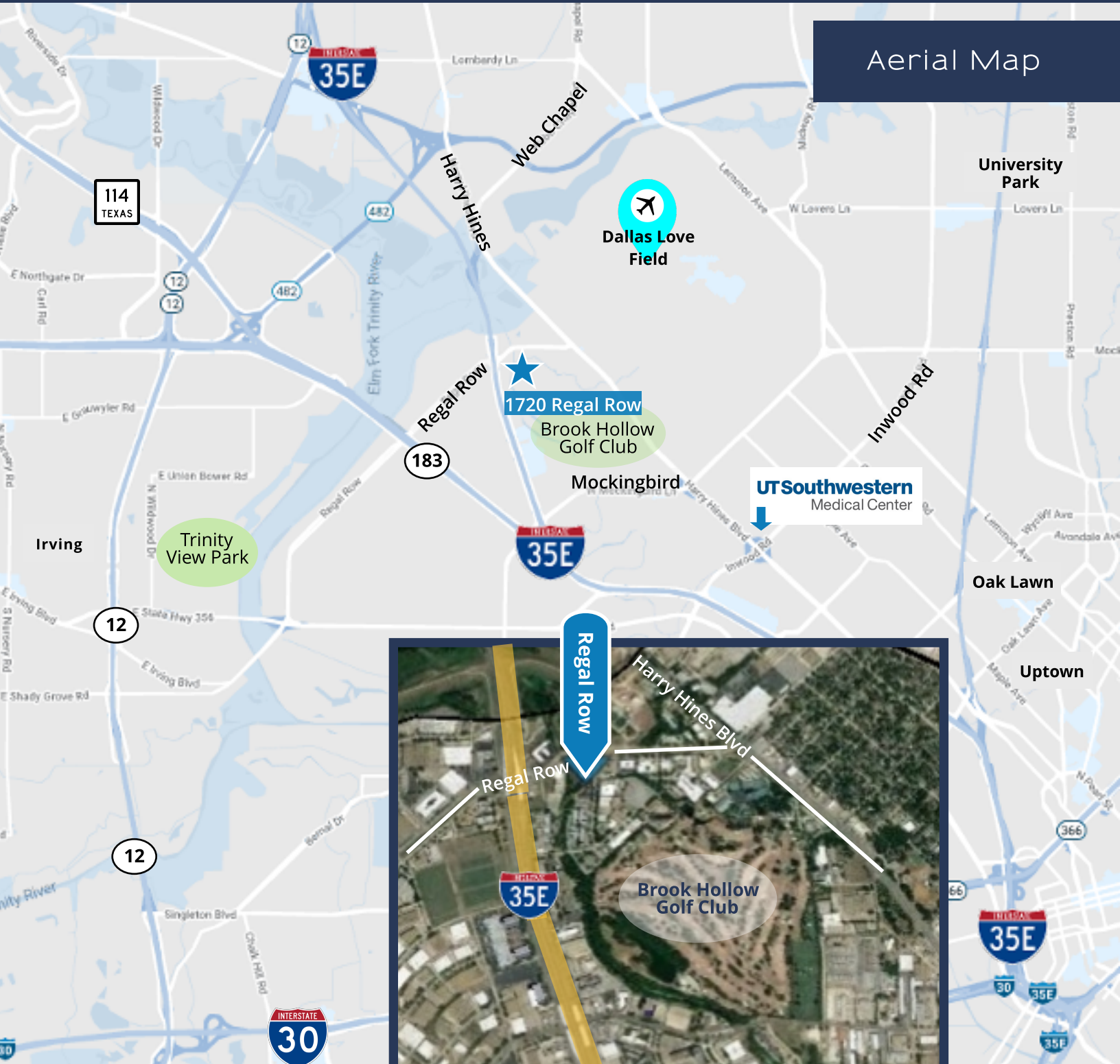
D. 214.253.0786

blegrow@dominuscommercial.com

1720 Regal Row

DALLAS, TX 75235

Aerial Map



Blake LeGrow

214.253.0786 | blegrow@dominuscommercial.com

DOMINUS COMMERCIAL, INC
1825 Market Center Blvd, #420
Dallas, TX 75207

See my Information About Brokerage Services

This document has been prepared by Dominus Commercial, Inc for advertising and general information only. Dominus Commercial makes no guarantees, representations or warranties of any kind, expressed or implied, regarding the information including, but not limited to, warranties of content, accuracy and reliability. Any interested party should undertake their own inquiries as to the accuracy of the information. Dominus Commercial excludes unequivocally all inferred or implied terms, conditions and warranties arising out of this document and excludes all liability for loss and damages arising there from.