

PROPERTY OVERVIEW

# FASHION COURT 1

1809 FASHION COURT, JOPPA, MD 21085



## Building Information

- Just off Route 7/Philadelphia Road with easy access to I-95 via Route 152 and Route 24
- Located in the Edgewood/Harford County Enterprise Zone
- One flex-warehouse building totaling 52,200 SF
- One-story brick construction with steel trim
- 20' clear ceiling heights
- Rear building docks and drive-ins
- Air-conditioned warehouse
- Surface parking
- Sprinklered
- Gas heat
- 120/208 volt, 3-phase, 4-wire service
- FiOS service available
- Public water and sewer
- Professionally landscaped
- Harford County, GI zoning: manufacturing, warehousing, distribution, office



## Surrounding Amenities

- Burger King
- McDonald's
- Pizza Hut
- Taco Bell
- KFC
- Wendy's
- Dunkin'
- Waffle House
- Subway
- Walgreens
- Aldi
- Royal Farms



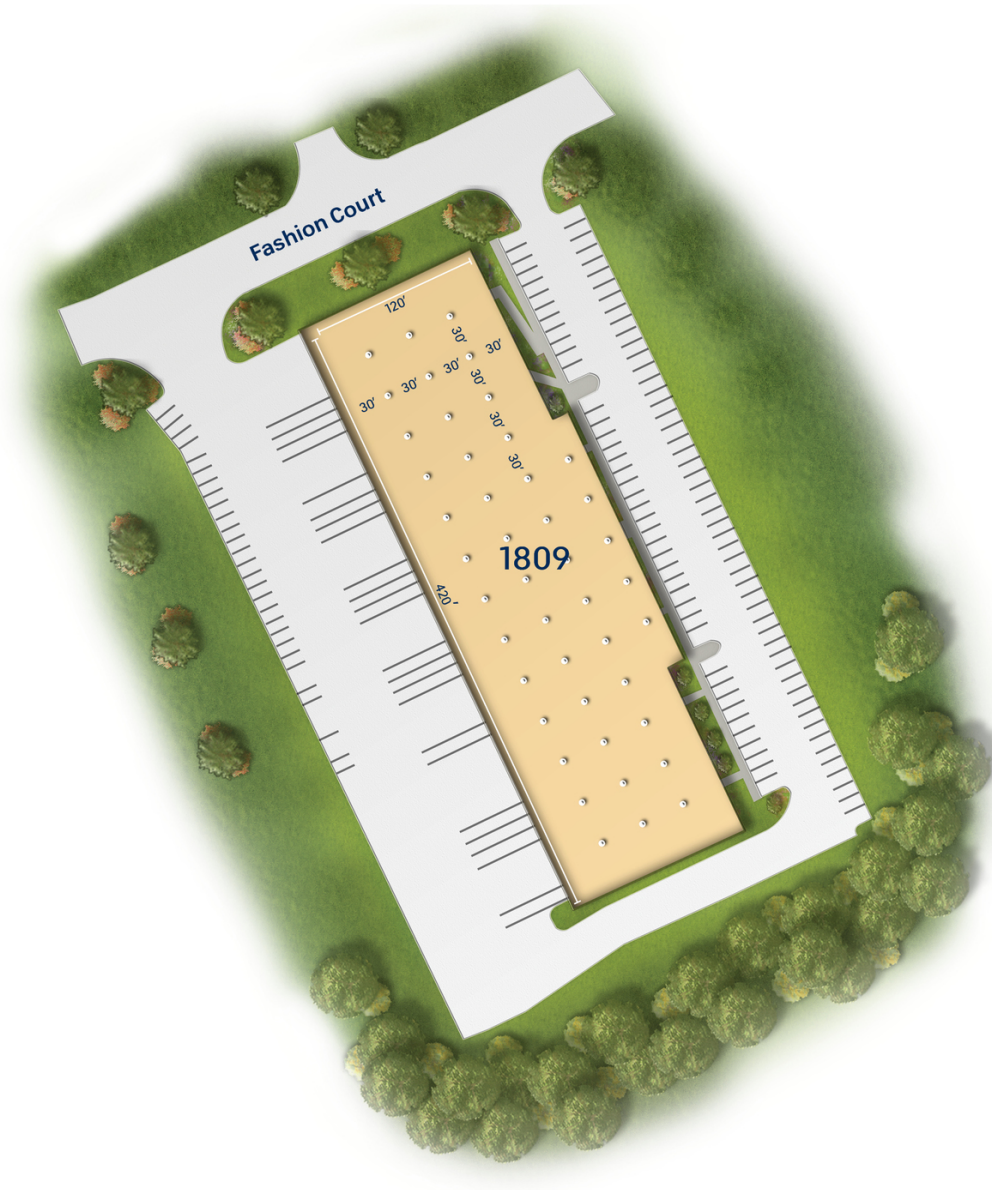
# Site Plan

Fashion Court 1

1809 Fashion Court

Industrial

52,200 SF

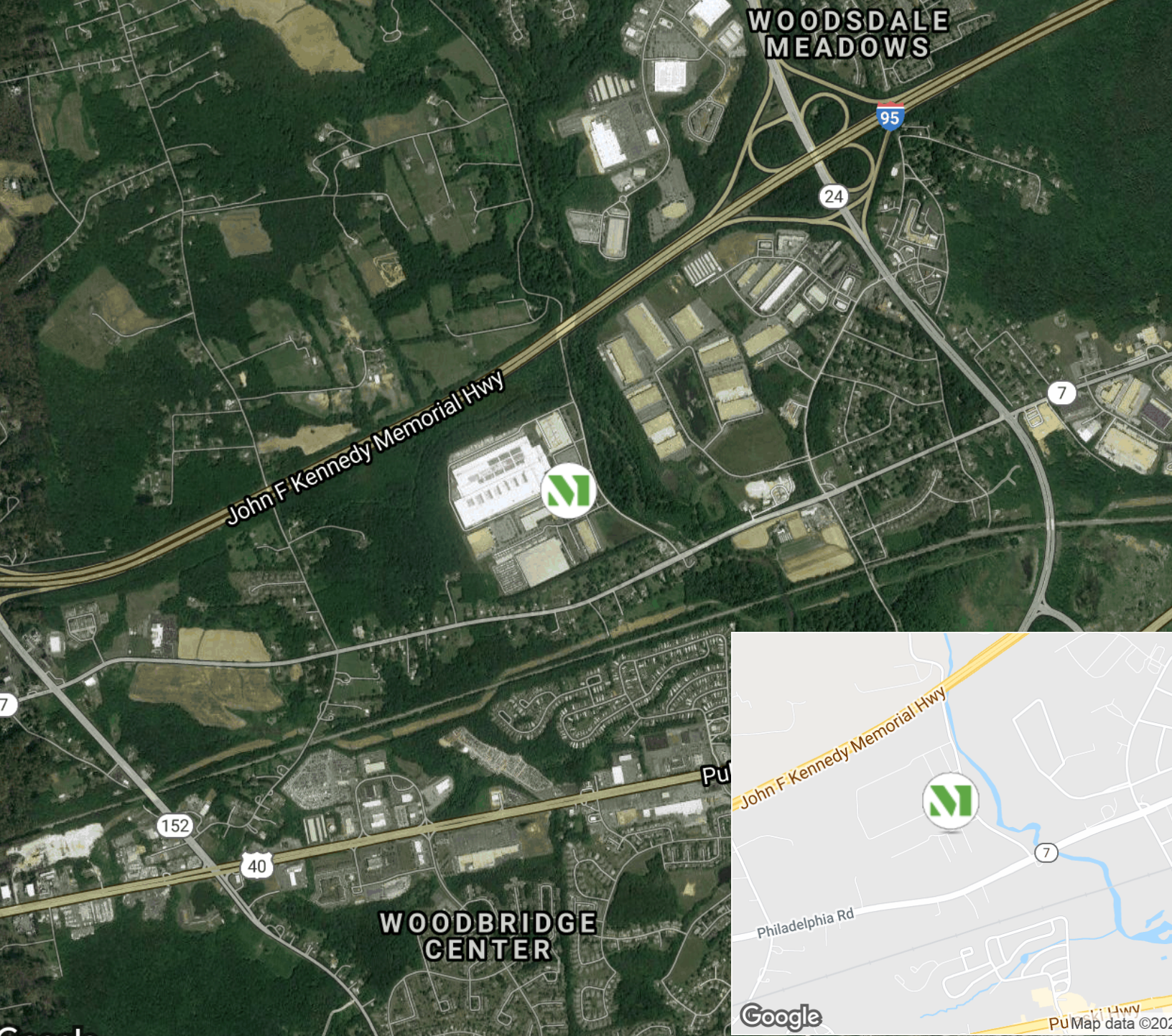


*“It was always a positive experience with Merritt. In our entire experience with Merritt ‘no’ was not in their vocabulary. It was always ‘we can make that work’ or ‘we can find a solution to your need’ and that set Merritt apart.”*

**GEORGE CARACOST**  
VICE PRESIDENT & GENERAL MANAGER  
SAAB DEFENSE AND SECURITY







#### CREATING HOMES FOR BUSINESSES

Established in 1967, Merritt Properties is a privately held commercial real estate company offering over 19 million square feet of Class A office, flex, warehouse, industrial, retail and build-to-suit spaces throughout Maryland, North Carolina and Virginia. We design, build, lease and manage our properties for the long term with a commitment to providing the highest quality service to all of our customers.

For additional information or to schedule a tour, contact:  
Pat Franklin | Whit Levering | Ashley Reimer | Lauren Lindsay

[merrittproperties.com](https://merrittproperties.com)

MD: 410.298.2600 | VA: 703.858.2725 | NC: 919.526.0070

