

FOR SALE

STONEGATE LODGE

2106 E Van Buren, Eureka Springs, AR 72632



OFFERING SUMMARY

SALE PRICE:	\$995,000
NUMBER OF ROOMS:	34
AVAILABLE SF:	
LOT SIZE:	2.09 Acres
BUILDING SIZE:	12,016 SF
PRICE / SF:	\$82.81

PROPERTY OVERVIEW

This is it! Great lodging/motel business in the heart of beautiful Eureka Springs AR! 34 guest rooms and managers quarters, wonderful pavilion, swimming pool, and great lodge feel to it. Booming business, with turn-key operation. Buy today and start cashing in!

PROPERTY HIGHLIGHTS

- Hwy 62 Frontage
- Virtually Maintenance Free Exterior
- 10 Rooms Updated
- Managers Quarters
- Beautiful Lodge Feel Inside & Out
- Turn-Key - Cash Flowing Property

KW COMMERCIAL
3801 Johnson Mill Blvd.,
Suite C
Fayetteville, AR 72704

TIMOTHY SALMONSEN
Executive Broker - Commercial Director
O: 479.231.1355
C: 479.366.6737
sgmwa@gmail.com
AR #EB00066512

We obtained the information above from sources we believe to be reliable. However, we have not verified its accuracy and make no guarantee, warranty or representation about it. It is submitted subject to the possibility of errors, omissions, change of price, rental or other conditions, prior sale, lease or financing, or withdrawal without notice. We include projections, opinions, assumptions or estimates for example only, and they may not represent current or future performance of the property. You and your tax and legal advisors should conduct your own investigation of the property and transaction.

Each Office Independently Owned and Operated kwcommercial.com

FOR SALE

STONEGATE LODGE

2106 E Van Buren, Eureka Springs, AR 72632



KW COMMERCIAL
3801 Johnson Mill Blvd.,
Suite C
Fayetteville, AR 72704

TIMOTHY SALMONSEN
Executive Broker - Commercial Director
O: 479.231.1355
C: 479.366.6737
sgmwa@gmail.com
AR #EB00066512

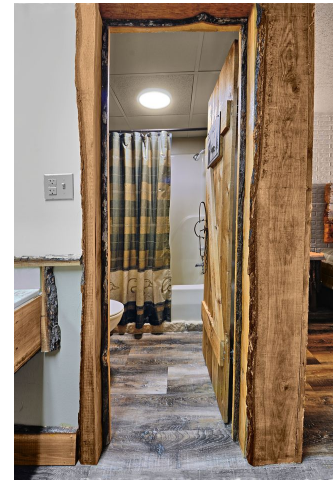
We obtained the information above from sources we believe to be reliable. However, we have not verified its accuracy and make no guarantee, warranty or representation about it. It is submitted subject to the possibility of errors, omissions, change of price, rental or other conditions, prior sale, lease or financing, or withdrawal without notice. We include projections, opinions, assumptions or estimates for example only, and they may not represent current or future performance of the property. You and your tax and legal advisors should conduct your own investigation of the property and transaction.

Each Office Independently Owned and Operated kwcommercial.com

FOR SALE

STONEGATE LODGE

2106 E Van Buren, Eureka Springs, AR 72632



KW COMMERCIAL
3801 Johnson Mill Blvd.,
Suite C
Fayetteville, AR 72704

TIMOTHY SALMONSEN
Executive Broker - Commercial Director
O: 479.231.1355
C: 479.366.6737
sgmrwa@gmail.com
AR #EB00066512

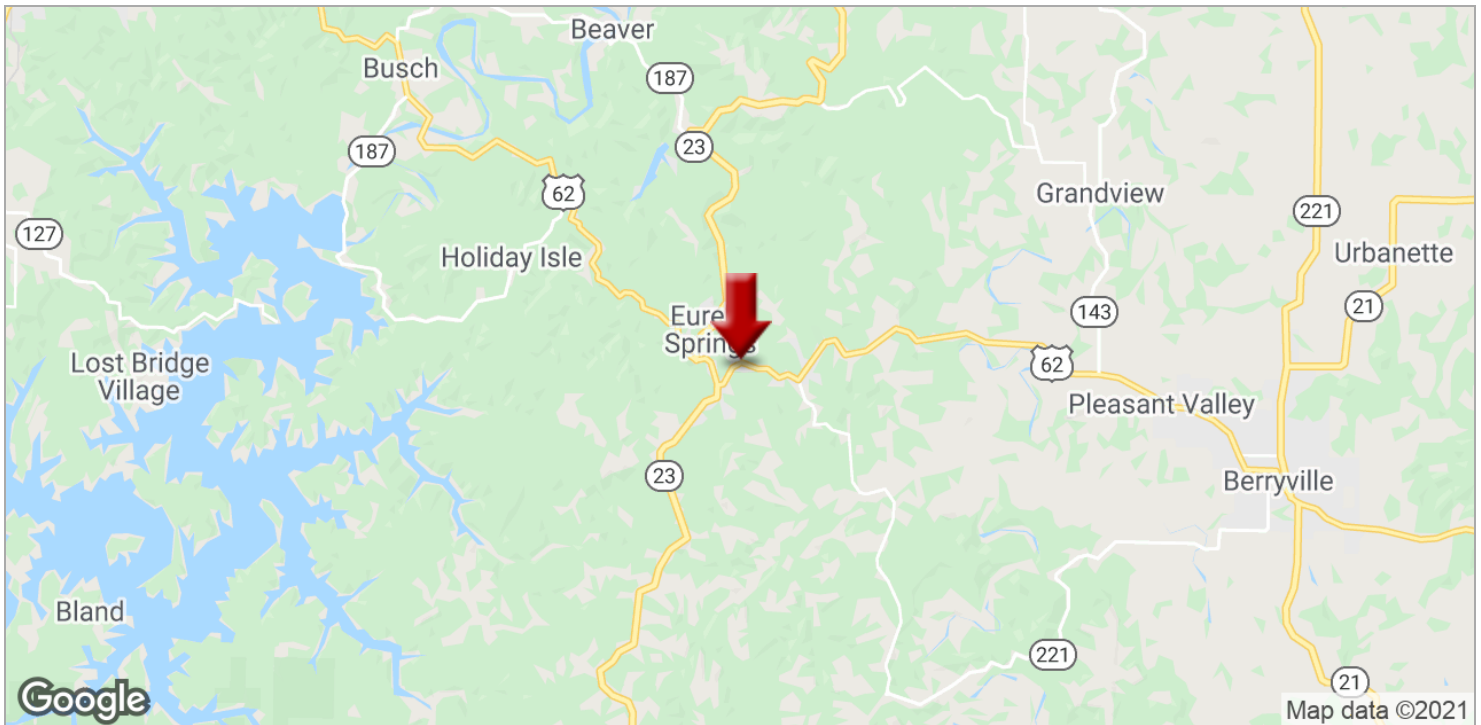
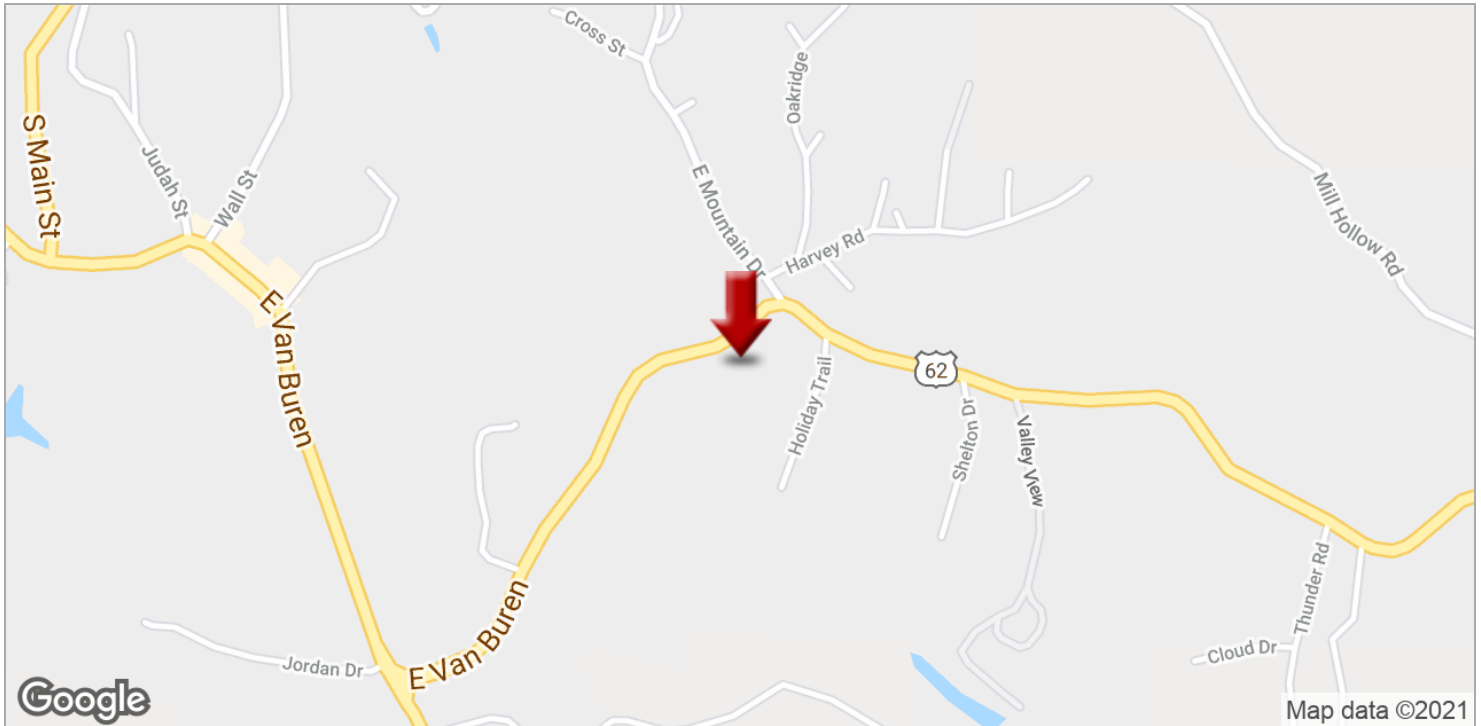
We obtained the information above from sources we believe to be reliable. However, we have not verified its accuracy and make no guarantee, warranty or representation about it. It is submitted subject to the possibility of errors, omissions, change of price, rental or other conditions, prior sale, lease or financing, or withdrawal without notice. We include projections, opinions, assumptions or estimates for example only, and they may not represent current or future performance of the property. You and your tax and legal advisors should conduct your own investigation of the property and transaction.

Each Office Independently Owned and Operated kwcommercial.com

FOR SALE

STONEGATE LODGE

2106 E Van Buren, Eureka Springs, AR 72632



KW COMMERCIAL
3801 Johnson Mill Blvd.,
Suite C
Fayetteville, AR 72704

TIMOTHY SALMONSEN
Executive Broker - Commercial Director
O: 479.231.1355
C: 479.366.6737
sgmrwa@gmail.com
AR #EB00066512

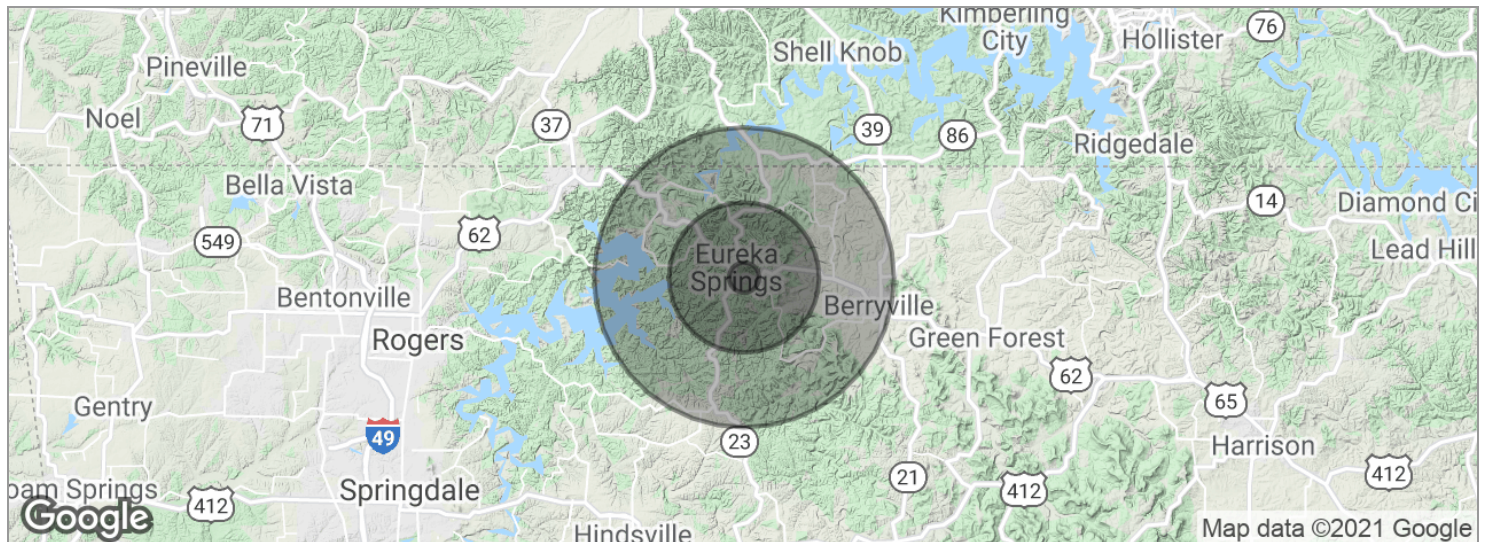
We obtained the information above from sources we believe to be reliable. However, we have not verified its accuracy and make no guarantee, warranty or representation about it. It is submitted subject to the possibility of errors, omissions, change of price, rental or other conditions, prior sale, lease or financing, or withdrawal without notice. We include projections, opinions, assumptions or estimates for example only, and they may not represent current or future performance of the property. You and your tax and legal advisors should conduct your own investigation of the property and transaction.

Each Office Independently Owned and Operated kwcommercial.com

FOR SALE

STONEGATE LODGE

2106 E Van Buren, Eureka Springs, AR 72632



POPULATION	1 MILE	5 MILES	10 MILES
Total population	136	3,414	14,392
Median age	56.3	56.0	51.0
Median age (male)	53.9	53.6	49.1
Median age (Female)	57.8	57.5	52.3
HOUSEHOLDS & INCOME	1 MILE	5 MILES	10 MILES
Total households	60	1,511	6,154
# of persons per HH	2.3	2.3	2.3
Average HH income	\$58,760	\$58,204	\$53,214
Average house value			\$169,299

* Demographic data derived from 2010 US Census

KW COMMERCIAL
3801 Johnson Mill Blvd.,
Suite C
Fayetteville, AR 72704

TIMOTHY SALMONSEN
Executive Broker - Commercial Director
O: 479.231.1355
C: 479.366.6737
sgmwa@gmail.com
AR #EB00066512

We obtained the information above from sources we believe to be reliable. However, we have not verified its accuracy and make no guarantee, warranty or representation about it. It is submitted subject to the possibility of errors, omissions, change of price, rental or other conditions, prior sale, lease or financing, or withdrawal without notice. We include projections, opinions, assumptions or estimates for example only, and they may not represent current or future performance of the property. You and your tax and legal advisors should conduct your own investigation of the property and transaction.

Each Office Independently Owned and Operated kwcommercial.com