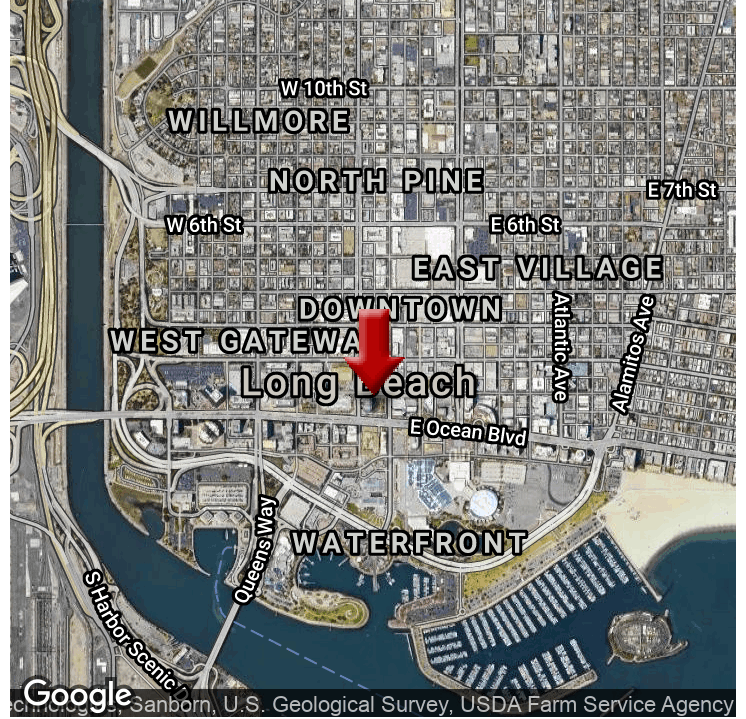


OFFICE FOR LEASE

LANDMARK SQUARE

111 W Ocean Blvd, Long Beach, CA 90802



OFFERING SUMMARY

AVAILABLE SF:	300 - 2,799 SF
LEASE RATE:	\$7,000.00 per month (Full Service)
BUILDING SIZE:	464,406 SF

PROPERTY OVERVIEW

Prestigious Class A office space available for sublease in the iconic Landmark Square. Located on the 15th floor, this unit overlooks the city of Long Beach with views of San Pedro, downtown Los Angeles, and the San Gabriel Mountains. The space is approximately 2,799 SF and consists of window lined and private offices. The unit also has a small bullpen area, nice conference room and kitchenette.

PROPERTY HIGHLIGHTS

- Prestigious Class A office sublease thru October 30, 2021
- Downtown Long Beach location
- 7 parking spaces included in rental rate
- Glass lined offices
- Conference room
- Close to public transportation
- Food court on site
- Property management on site
- Walking distance to public transportation
- Hip location

KW COMMERCIAL

PATRICK SHARPLES

Director
O: 714.293.2792
C: 714.293.2792
psharples@kwcommercial.com
CA #01245463

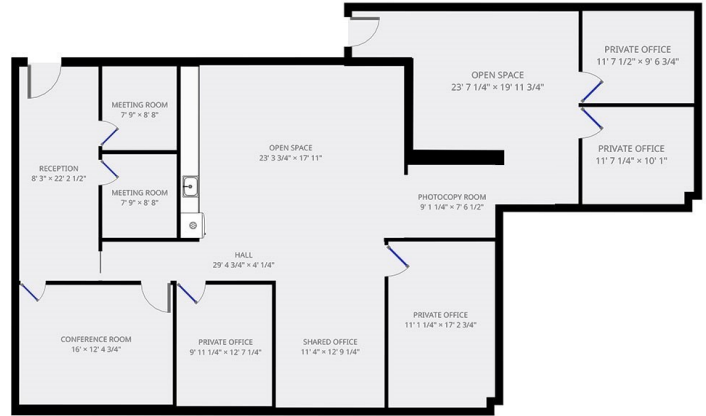
We obtained the information above from sources we believe to be reliable. However, we have not verified its accuracy and make no guarantee, warranty or representation about it. It is submitted subject to the possibility of errors, omissions, change of price, rental or other conditions, prior sale, lease or financing, or withdrawal without notice. We include projections, opinions, assumptions or estimates for example only, and they may not represent current or future performance of the property. You and your tax and legal advisors should conduct your own investigation of the property and transaction.

Each Office Independently Owned and Operated kwcommercial.com

OFFICE FOR LEASE

LANDMARK SQUARE

111 W Ocean Blvd, Long Beach, CA 90802



KW COMMERCIAL

PATRICK SHARPLES

Director
O: 714.293.2792
C: 714.293.2792
psharples@kwcommercial.com
CA #01245463

We obtained the information above from sources we believe to be reliable. However, we have not verified its accuracy and make no guarantee, warranty or representation about it. It is submitted subject to the possibility of errors, omissions, change of price, rental or other conditions, prior sale, lease or financing, or withdrawal without notice. We include projections, opinions, assumptions or estimates for example only, and they may not represent current or future performance of the property. You and your tax and legal advisors should conduct your own investigation of the property and transaction.

Each Office Independently Owned and Operated kwcommercial.com

LANDMARK SQUARE

111 W Ocean Blvd, Long Beach, CA 90802



POPULATION	1 MILE	3 MILES	5 MILES
Total population	40,083	213,846	365,394
Median age	32.3	29.1	31.6
Median age (male)	31.8	29.0	31.2
Median age (Female)	33.1	29.5	32.1
HOUSEHOLDS & INCOME	1 MILE	3 MILES	5 MILES
Total households	17,950	71,581	127,980
# of persons per HH	2.2	3.0	2.9
Average HH income	\$53,030	\$51,110	\$64,879
Average house value	\$346,355	\$458,807	\$516,604

** Demographic data derived from 2010 US Census*

KW COMMERCIAL

PATRICK SHARPLES

Director
 O: 714.293.2792
 C: 714.293.2792
 psharples@kwcommercial.com
 CA #01245463

We obtained the information above from sources we believe to be reliable. However, we have not verified its accuracy and make no guarantee, warranty or representation about it. It is submitted subject to the possibility of errors, omissions, change of price, rental or other conditions, prior sale, lease or financing, or withdrawal without notice. We include projections, opinions, assumptions or estimates for example only, and they may not represent current or future performance of the property. You and your tax and legal advisors should conduct your own investigation of the property and transaction.

Each Office Independently Owned and Operated kwcommercial.com