

6,205 SF PROFESSIONAL OFFICE | OPEN MORTGAGE BUILDING ON TOWER RD

**3024 Tower Road, 1st Floor East
Rapid City, SD 57701**

Property Highlights

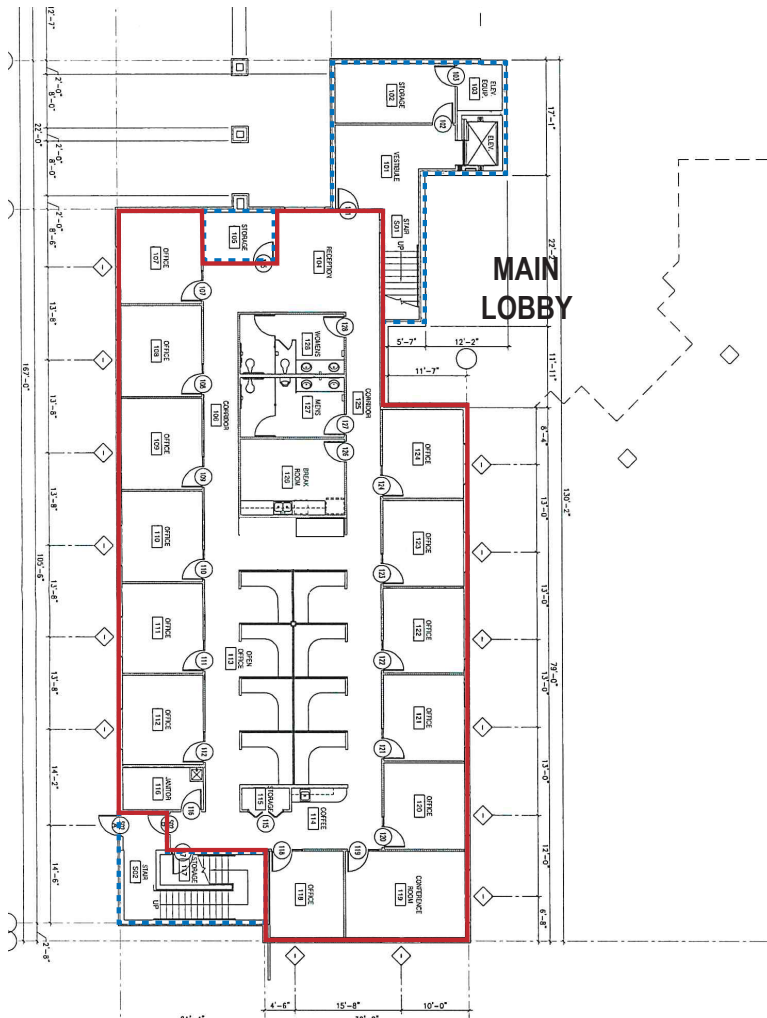
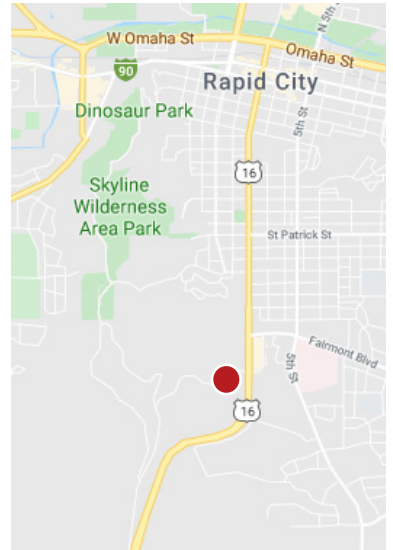
High profile, Class A office 1st floor condo in the east wing of the Open Mortgage building. New construction (built in 2014) on south side of Tower Road with premium finishes, convenient amenities, and phenomenal views overlooking Mt Rushmore Road and East Rapid City. Common areas include main floor lobby, 1st floor vestibule, outdoor patio, and access to 3rd floor conference room, lounge, kitchen, restrooms. Elevator to all floors.

Available Suite Amenities

- | | |
|--|---|
| <p>Suite 1E
Size: 6,205 SF</p> | <ul style="list-style-type: none"> • 12 private offices, 8 cubicles • Conference room, employee lounge, copy/print station, coffee station, m/w restrooms |
|--|---|

Base Rent: \$16.00/SF/YR
Est. NNN: \$4.64/SF/YR
Est. Total: \$20.64/SF/YR

Est. \$10,673 per month + utilities



Exclusively listed by:
Chris Long, SIOR, CCIM
Commercial Broker
605.939.4489
chris@rapidcitycommercial.com

*Your Property...
Our PrioritySM*

Keller Williams Realty Black Hills | 2401 West Main Street, Rapid City, SD 57702 | 605.335.8100 | www.RapidCityCommercial.com

Disclaimer: The information contained herein has been given to us by the owner of the property or other sources we deem reliable. We have no reason to doubt its accuracy, but we do not guarantee it. All information should be verified prior to purchase or lease.