

18610 TOMATO ST - BLDG F

18610 Tomato St, Spring, TX 77379



OFFERING SUMMARY

AVAILABLE SF:	2,800 SF
LEASE RATE:	\$1.00 per month (MG)
LOT SIZE:	60,474 SF
YEAR BUILT:	1998
BUILDING SIZE:	2,800
RENOVATED:	2005
MARKET:	North Houston
SUBMARKET:	Spring

PROPERTY OVERVIEW

Industrial space for lease - 2,800 square feet with approximate 1,800 square feet divided into reception area, 3 Large offices, small kitchen, storage area, bathroom, shower, and estimated 1,200 square feet in open warehouse space with 2 large overhead doors.

Price is \$1.00 per square feet - Modified Gross Lease - Tenant pays Electricity

PROPERTY HIGHLIGHTS

- 2,800 square feet
- Offices plus warehouse space

KW COMMERCIAL
8344 Spring Cypress Rd.
Spring, TX 77379

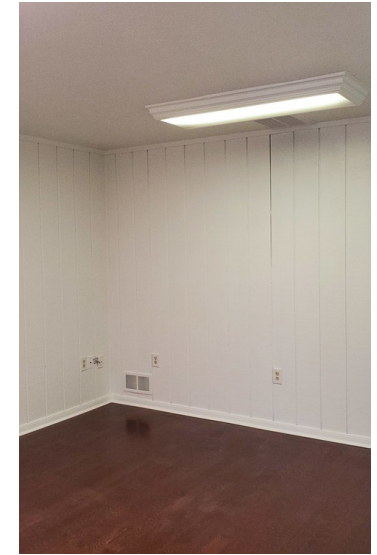
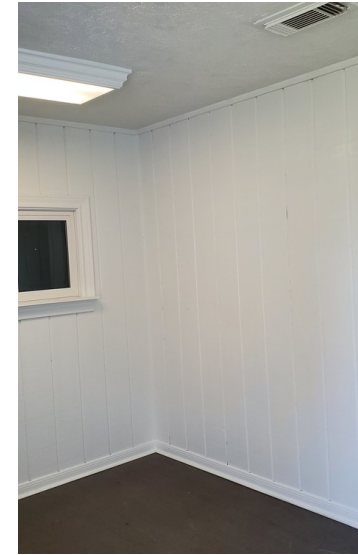
RECY DUNN
Commercial Broker & Director KW Commercial Professionals
O: 832.541.7466
C: 832.541.7466
askrecy@kwcommercial.com
TX #614951

Each Office Independently Owned and Operated kwcommercial.com

We obtained the information above from sources we believe to be reliable. However, we have not verified its accuracy and make no guarantee, warranty or representation about it. It is submitted subject to the possibility of errors, omissions, change of price, rental or other conditions, prior sale, lease or financing, or withdrawal without notice. We include projections, opinions, assumptions or estimates for example only, and they may not represent current or future performance of the property. You and your tax and legal advisors should conduct your own investigation of the property and transaction.

18610 TOMATO ST - BLDG F

18610 Tomato St, Spring, TX 77379



KW COMMERCIAL
8344 Spring Cypress Rd.
Spring, TX 77379

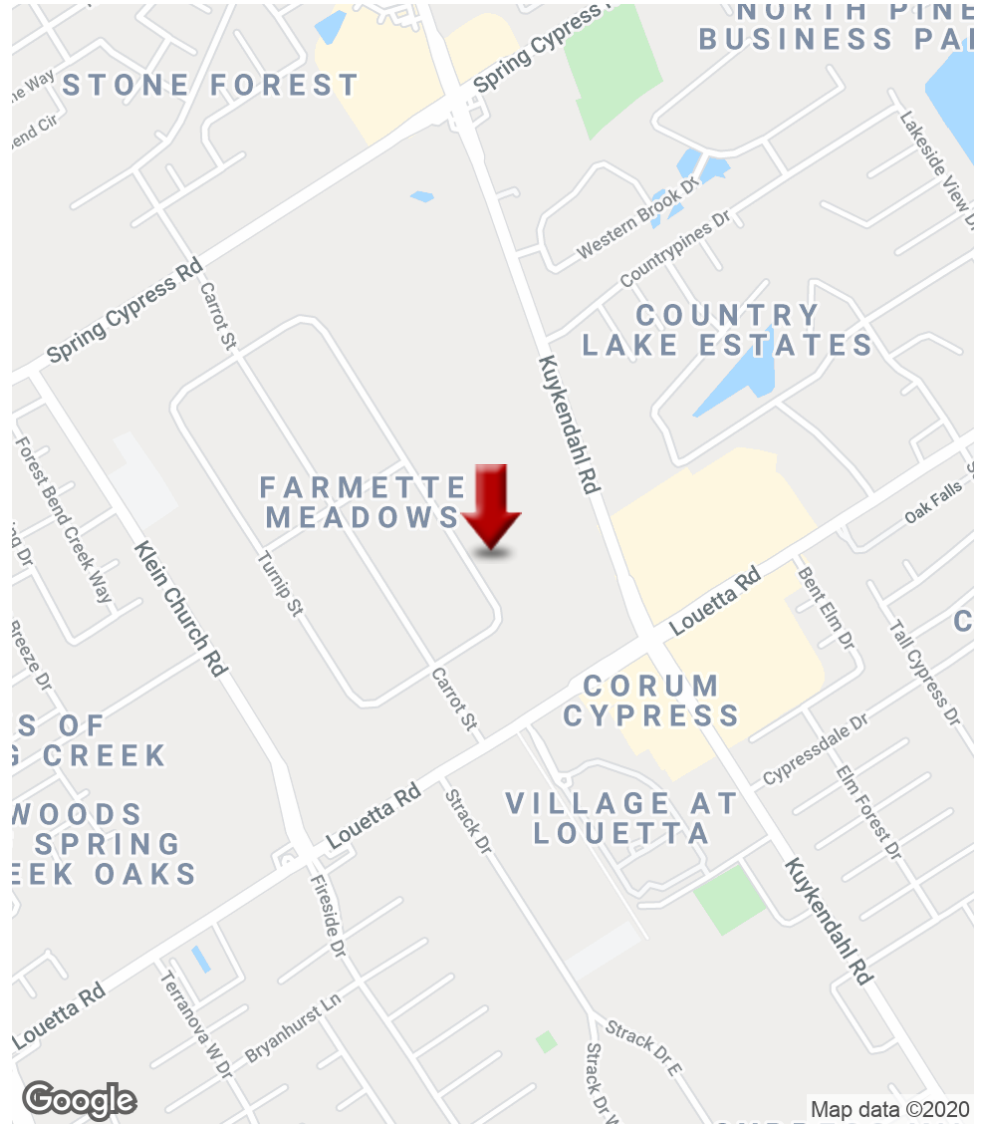
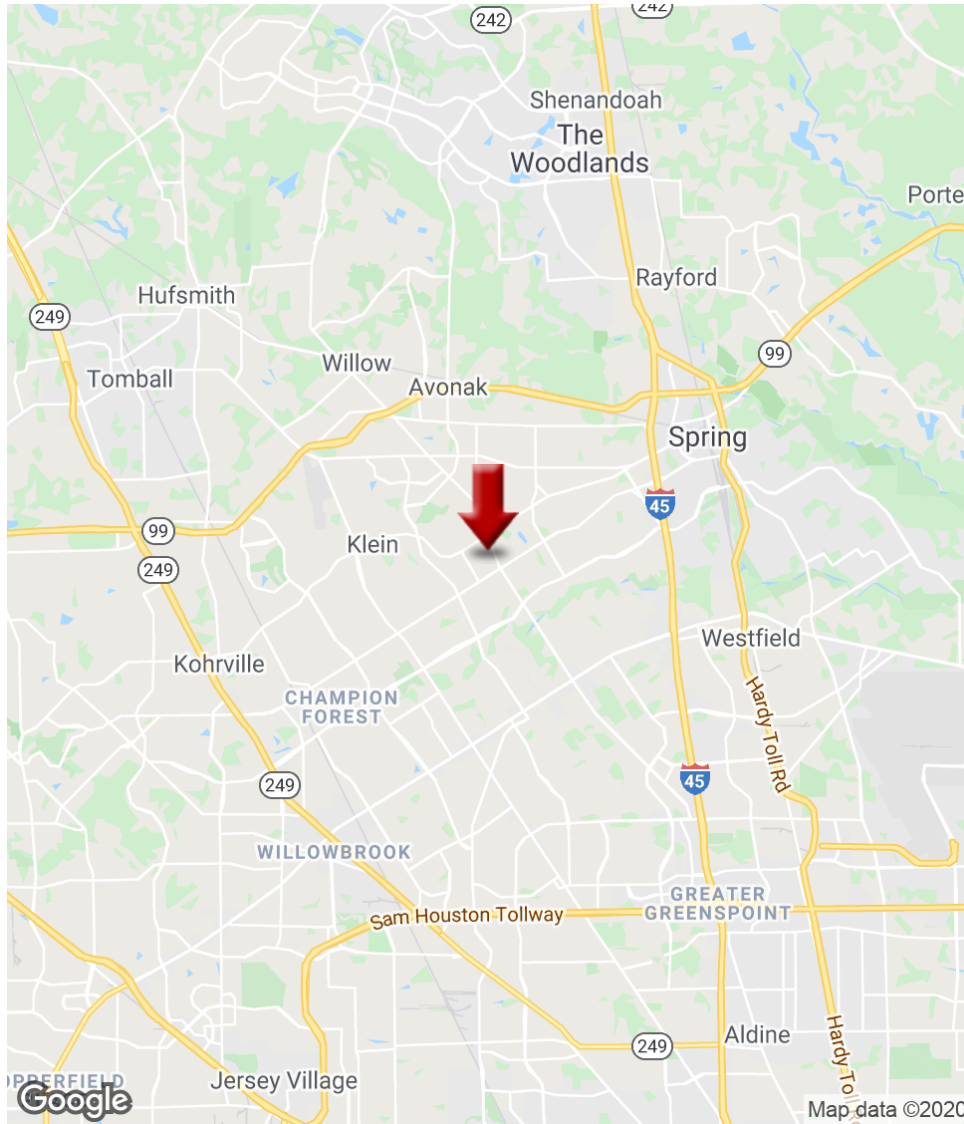
RECY DUNN
Commercial Broker & Director KW Commercial Professionals
O: 832.541.7466
C: 832.541.7466
askrecy@kwcommercial.com
TX #614951

Each Office Independently Owned and Operated kwcommercial.com

We obtained the information above from sources we believe to be reliable. However, we have not verified its accuracy and make no guarantee, warranty or representation about it. It is submitted subject to the possibility of errors, omissions, change of price, rental or other conditions, prior sale, lease or financing, or withdrawal without notice. We include projections, opinions, assumptions or estimates for example only, and they may not represent current or future performance of the property. You and your tax and legal advisors should conduct your own investigation of the property and transaction.

18610 TOMATO ST - BLDG F

18610 Tomato St, Spring, TX 77379



KW COMMERCIAL
8344 Spring Cypress Rd.
Spring, TX 77379

RECY DUNN
Commercial Broker & Director KW Commercial Professionals
O: 832.541.7466
C: 832.541.7466
askrecy@kwcommercial.com
TX #614951

Each Office Independently Owned and Operated kwcommercial.com

We obtained the information above from sources we believe to be reliable. However, we have not verified its accuracy and make no guarantee, warranty or representation about it. It is submitted subject to the possibility of errors, omissions, change of price, rental or other conditions, prior sale, lease or financing, or withdrawal without notice. We include projections, opinions, assumptions or estimates for example only, and they may not represent current or future performance of the property. You and your tax and legal advisors should conduct your own investigation of the property and transaction.