

LAND FOR SALE

212 NEW COUNTY ROAD

212 New County Road, Thomaston, ME 04861



OFFERING SUMMARY

SALE PRICE:	\$750,000
LOT SIZE:	2.59 Acres
ZONING:	Highway Commercial

PROPERTY OVERVIEW

Development site in prime location with all public utilities on property. Zoned as highway commercial allowing for many uses. Located in close proximity to Dunkin Donuts, Lowes, Applebee's, Hampton Inn & across Rte 1 from Wal-Mart/Tractor Supply Stores. The location has an average daily traffic count of 15,000 with spikes during vacation months.

PROPERTY HIGHLIGHTS

- Located next to Walmart & Tractor Supply Center
- High Traffic Visibility
- Retail, Restaurant, Hospitality Users

KW COMMERCIAL
50 Sewall Street,
Second Floor
Portland, ME 04102

DAVID COSTELLO
Associate Broker/Business Broker
O: 207.879.9800
C: 207.754.7494
dcostello@rockwaterme.com
ME #BA923558

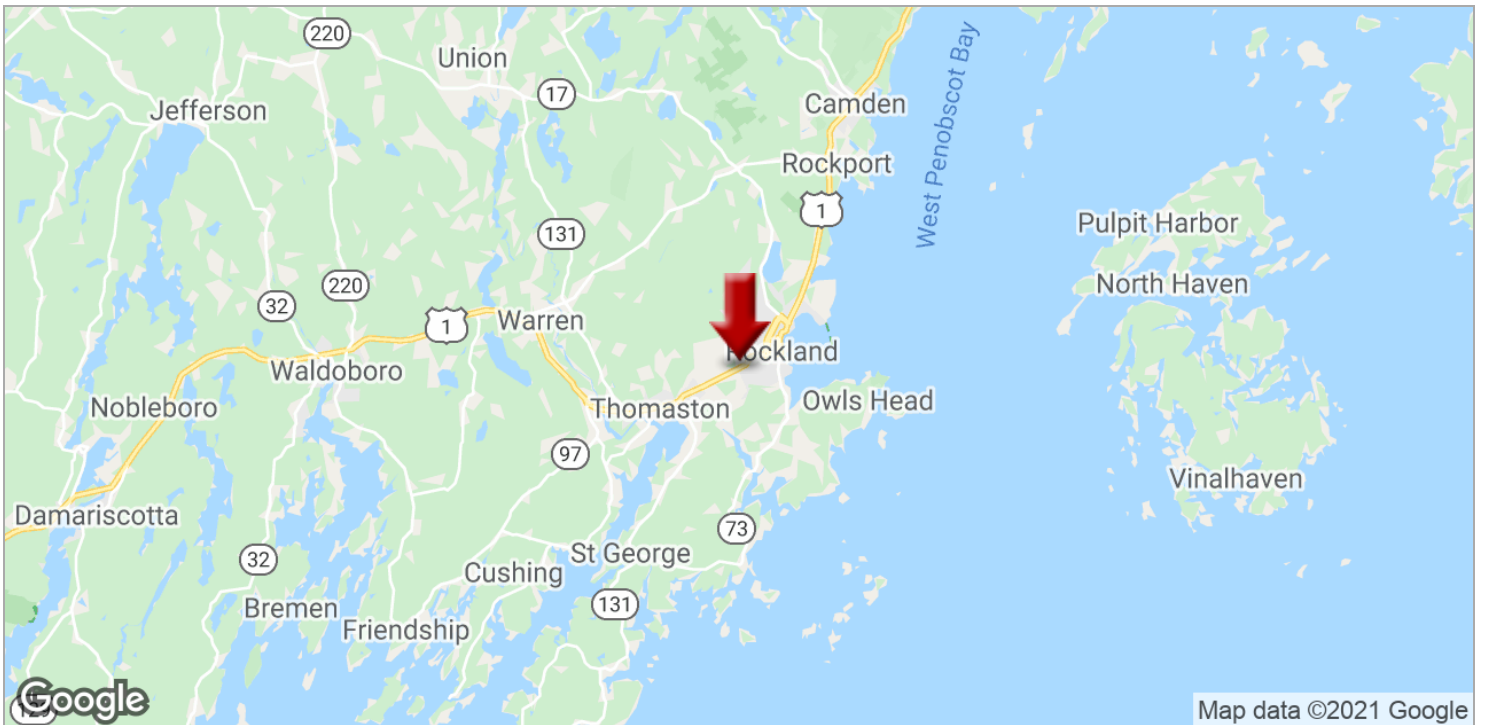
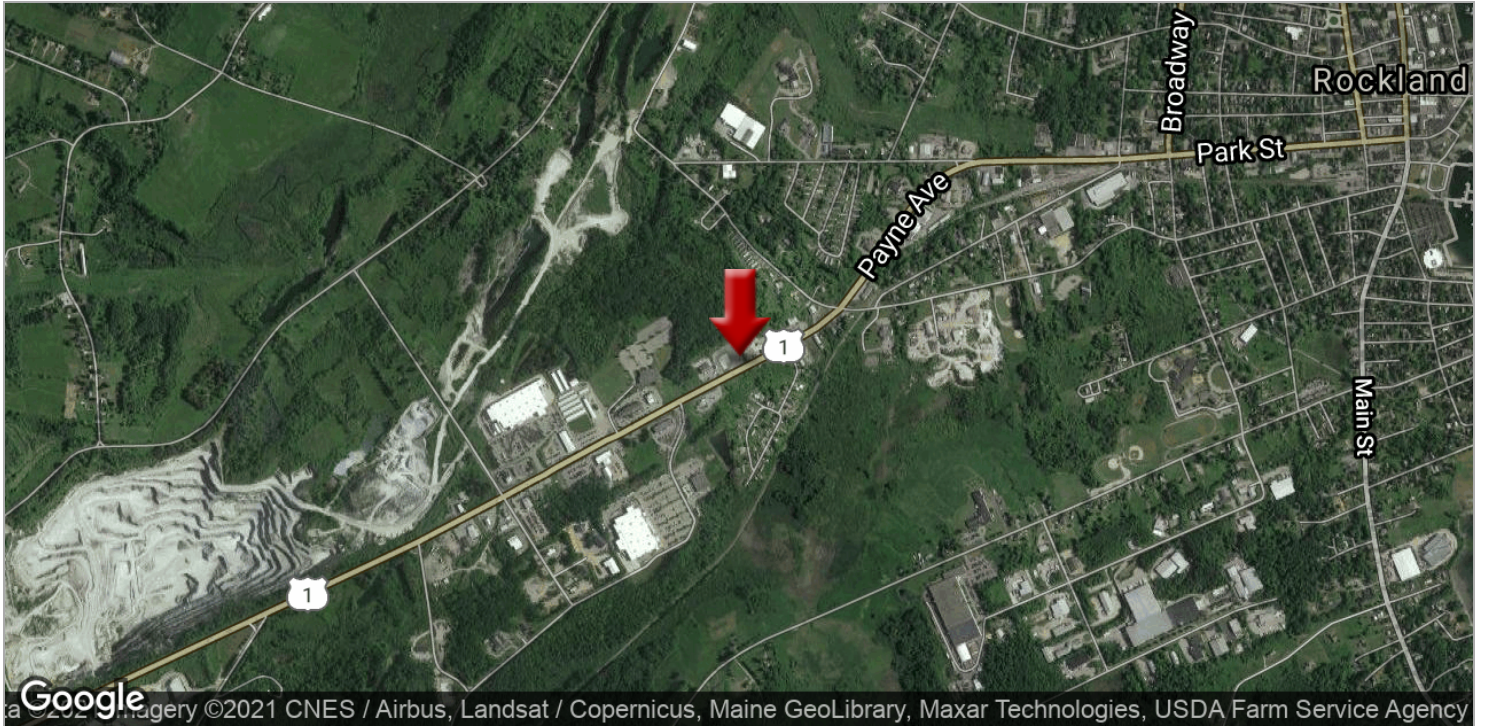
We obtained the information above from sources we believe to be reliable. However, we have not verified its accuracy and make no guarantee, warranty or representation about it. It is submitted subject to the possibility of errors, omissions, change of price, rental or other conditions, prior sale, lease or financing, or withdrawal without notice. We include projections, opinions, assumptions or estimates for example only, and they may not represent current or future performance of the property. You and your tax and legal advisors should conduct your own investigation of the property and transaction.

Each Office Independently Owned and Operated kwcommercial.com

LAND FOR SALE

212 NEW COUNTY ROAD

212 New County Road, Thomaston, ME 04861



KW COMMERCIAL
50 Sewall Street,
Second Floor
Portland, ME 04102

DAVID COSTELLO
Associate Broker/Business Broker
O: 207.879.9800
C: 207.754.7494
dcostello@rockwaterme.com
ME #BA923558

We obtained the information above from sources we believe to be reliable. However, we have not verified its accuracy and make no guarantee, warranty or representation about it. It is submitted subject to the possibility of errors, omissions, change of price, rental or other conditions, prior sale, lease or financing, or withdrawal without notice. We include projections, opinions, assumptions or estimates for example only, and they may not represent current or future performance of the property. You and your tax and legal advisors should conduct your own investigation of the property and transaction.

Each Office Independently Owned and Operated kwcommercial.com

LAND FOR SALE

212 NEW COUNTY ROAD

212 New County Road, Thomaston, ME 04861



Google

Map data ©2021 Imagery ©2021, CNES / Airbus, Maine GeoLibrary, Maxar Technologies, USDA Farm Service Agency

KW COMMERCIAL
50 Sewall Street,
Second Floor
Portland, ME 04102

DAVID COSTELLO
Associate Broker/Business Broker
O: 207.879.9800
C: 207.754.7494
dcostello@rockwaterme.com
ME #BA923558

We obtained the information above from sources we believe to be reliable. However, we have not verified its accuracy and make no guarantee, warranty or representation about it. It is submitted subject to the possibility of errors, omissions, change of price, rental or other conditions, prior sale, lease or financing, or withdrawal without notice. We include projections, opinions, assumptions or estimates for example only, and they may not represent current or future performance of the property. You and your tax and legal advisors should conduct your own investigation of the property and transaction.

Each Office Independently Owned and Operated kwcommercial.com

LAND FOR SALE

212 NEW COUNTY ROAD

212 New County Road, Thomaston, ME 04861



DAVID COSTELLO

Associate Broker/Business Broker

dcostello@rockwaterme.com

Direct: 207.879.9800 | Cell: 207.754.7494

ME #BA923558

PROFESSIONAL BACKGROUND

Dave Costello has been a business leader in the Greater Portland community for more than 30 years. He previously owned and operated Sun Media Group, whose holdings included companies from Southern, Central, and Western Maine. Within the industry his roles included buying, selling, managing, and developing businesses. In commercial real estate, he most recently worked with Daigle Commercial Group, specializing in the hospitality industry.

Dave has extensive experience in management, technology, marketing, and customer service. He brings excellent negotiation skills, a broad knowledge of the local business market, and a passion for helping people facilitate business goals. Dave is an innovative business leader who provides a broad scope of possibilities for his clients using a full range of professional resources.

Rock Water Group of KW Commercial offers business consulting and commercial real estate services to owners and family-owned businesses, backed by more than three decades in the Maine business market.

EDUCATION

BS Rochester Institute of Technology
MBA Husson University

MEMBERSHIPS

GPBR - Greater Portland Board of Realtors
MCAR - Maine Commercial Real Estate Association
NECPE- New England Commercial Property Exchange
NAR- National Association of Realtors

Greater Portland

50 Sewall Street Second Floor
Portland, ME 04102
207.879.9800

KW COMMERCIAL
50 Sewall Street,
Second Floor
Portland, ME 04102

DAVID COSTELLO
Associate Broker/Business Broker
O: 207.879.9800
C: 207.754.7494
dcostello@rockwaterme.com
ME #BA923558

We obtained the information above from sources we believe to be reliable. However, we have not verified its accuracy and make no guarantee, warranty or representation about it. It is submitted subject to the possibility of errors, omissions, change of price, rental or other conditions, prior sale, lease or financing, or withdrawal without notice. We include projections, opinions, assumptions or estimates for example only, and they may not represent current or future performance of the property. You and your tax and legal advisors should conduct your own investigation of the property and transaction.

Each Office Independently Owned and Operated kwcommercial.com