

RESTAURANT/RETAIL FOR SALE OR LEASE

2610 W MEMORIAL RD

OKLAHOMA CITY, OK 73134



EQUITY
SINCE 1981
REALTY

JUDY J. HATFIELD, CCIM

(405) 640- 6167 cell

EQUITY COMMERCIAL REALTY II, LLC

jjhatfield@ccim.net



OFFERING SUMMARY

Sale Price:	\$1,760,000
Lease Rate (Per Month):	\$8,000 NNN
Taxes (2020):	\$21,664
Insurance (2020):	\$17,671
Building Size:	5,442 SF
Lot Size:	1.33 Acres
Year Built/Renovated:	2005 / 2016
Zoning:	Commercial

PROPERTY HIGHLIGHTS

- Restaurant/Retail Building For Sale or Lease!
- Prime Location with Great Visibility from John Kilpatrick Turnpike | Across from Quail Springs Mall
- Maximum Building Occupancy - 123
- Ample Parking Around the Building in Addition to Area Parking
- Traffic Counts (vehicles/day) - Memorial Rd: 23,118 | N May: 21,022 | Kilpatrick Turnpike: 60,717

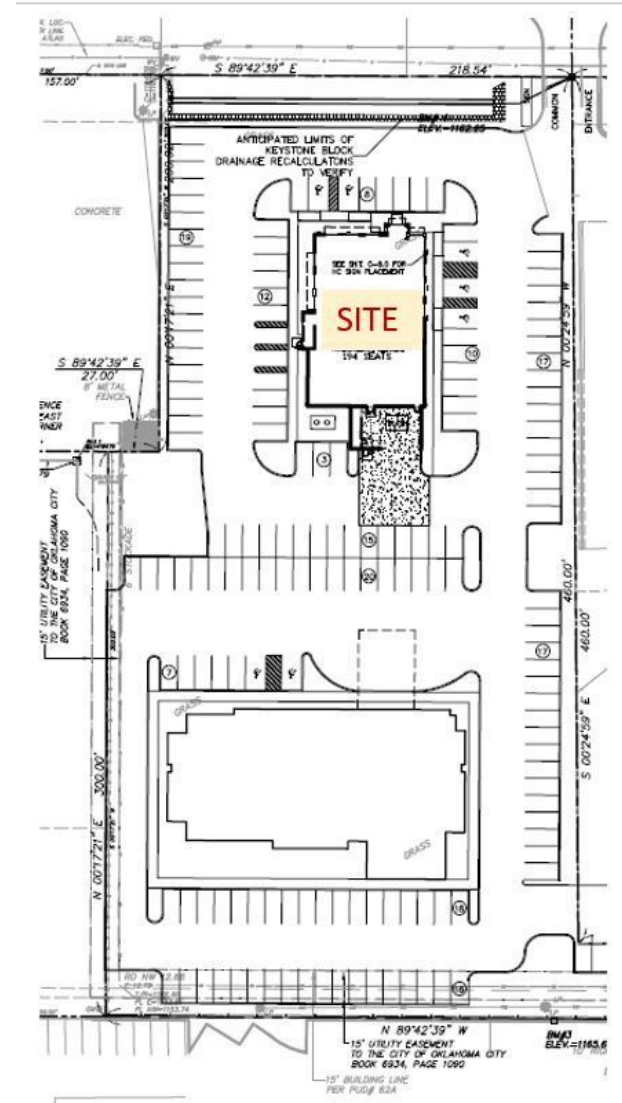
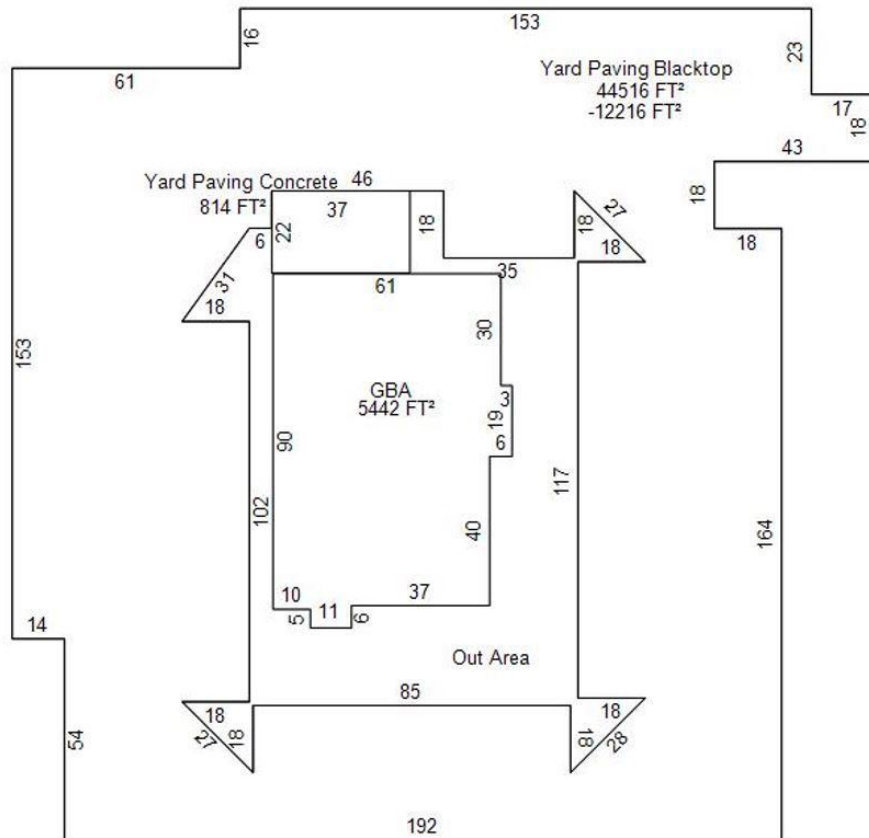
DEMOGRAPHICS

	1 MILE	3 MILES	5 MILES
Total Households	7,894	32,514	74,636
Total Population	13,887	72,409	175,831
Average HH Income	\$64,181	\$91,271	\$97,101

JUDY J. HATFIELD, CCIM

Equity Commercial Realty II, LLC
jjhatfield@ccim.net

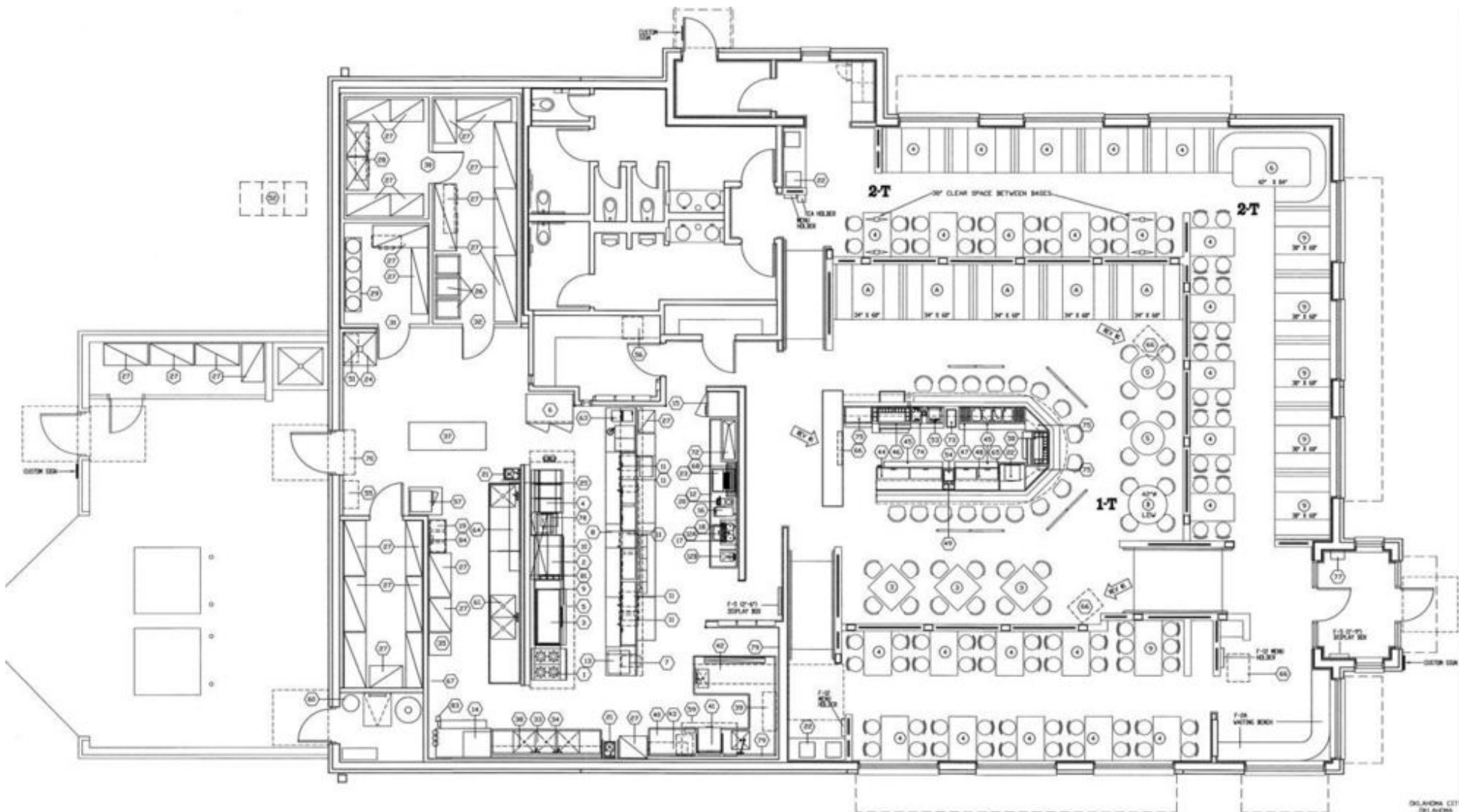
(405) 640- 6167 cell
(405) 364- 5300 office



JUDY J. HATFIELD, CCIM

Equity Commercial Realty II, LLC
jjhatfield@ccim.net

(405) 640- 6167 cell
(405) 364- 5300 office



JUDY J. HATFIELD, CCIM

Equity Commercial Realty II, LLC
jjhatfield@ccim.net

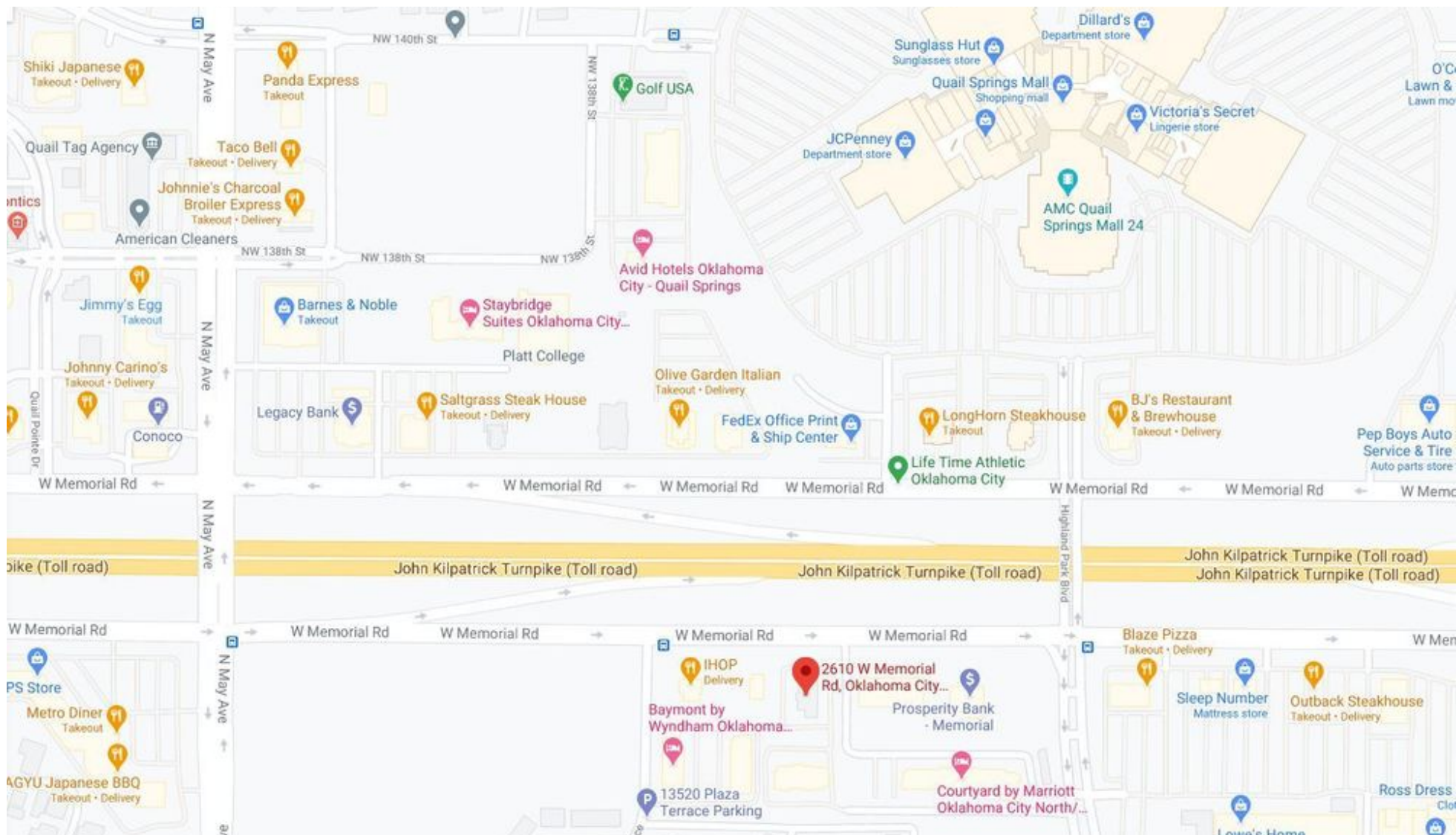
(405) 640- 6167 cell
(405) 364- 5300 office



JUDY J. HATFIELD, CCIM

Equity Commercial Realty II, LLC
jjhatfield@ccim.net

(405) 640- 6167 cell
(405) 364- 5300 office



JUDY J. HATFIELD, CCIM

Equity Commercial Realty II, LLC
jjhatfield@ccim.net

(405) 640- 6167 cell
(405) 364- 5300 office

The information contained herein has been obtained from the Owner and other reliable sources and is offered as an aid for investment analysis. Although deemed reliable information is not guaranteed, and is provided subject to errors, omissions, prior sale or withdrawal. Equity Commercial Realty II, LLC. All rights reserved.