

9400 PLACE

9340 - 9400 SW Beaverton Hillsdale Hwy | Beaverton, OR 97005

FOR LEASE



OFFICE SPACE AVAILABLE FOR LEASE

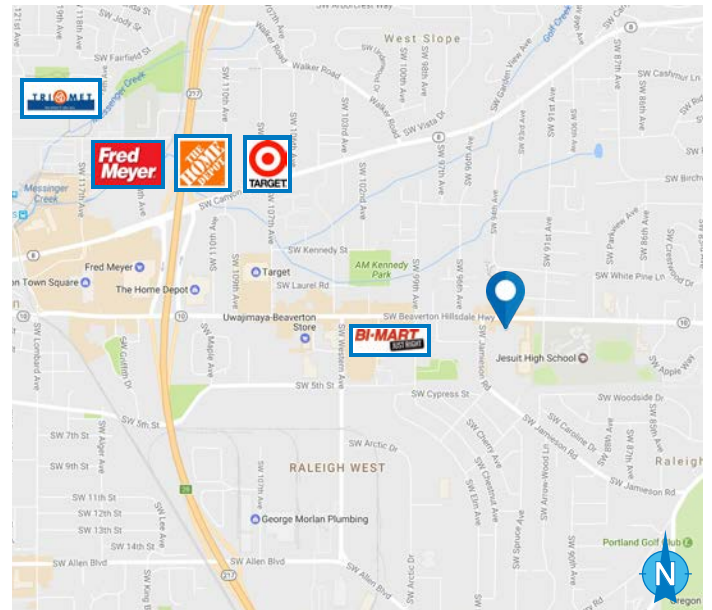
DETAILS

Building 9400:

- Suite 131: ± 8,644 SF - \$18.50 PSF, FS
- Suite 165A: ± 1,372 SF - \$18.50 PSF, FS
- Suite 165: ± 3,253 SF - \$18.50 PSF, FS
- Suite 225: ± 2,250 SF - \$18.50 PSF, FS

FEATURES

- Bright, natural light with offices along window line
- Courtyard setting; elevator served
- Professionally managed
- Ample parking with 3.5/1000 ratio
- Along SW Beaverton Hillsdale Highway
- Adjacent to Jesuit High School
- Walk to amenities; close to Beaverton Town Square
- Easy access to 217
- Park and walk right in to your suite on 1st floor



06.22.2021

For more information or a property tour, please contact:

DUANE LINK

503.225.8465

Duanel@norris-stevens.com



Information contained herein has been obtained from others and considered to be reliable; however, a prospective purchaser or lessee is expected to verify all information to his/her own satisfaction.

Norris & Stevens

INVESTMENT REAL ESTATE SERVICES

900 SW 5th Avenue • 17th Floor • Portland, OR 97204
503.223.3171 • norris-stevens.com

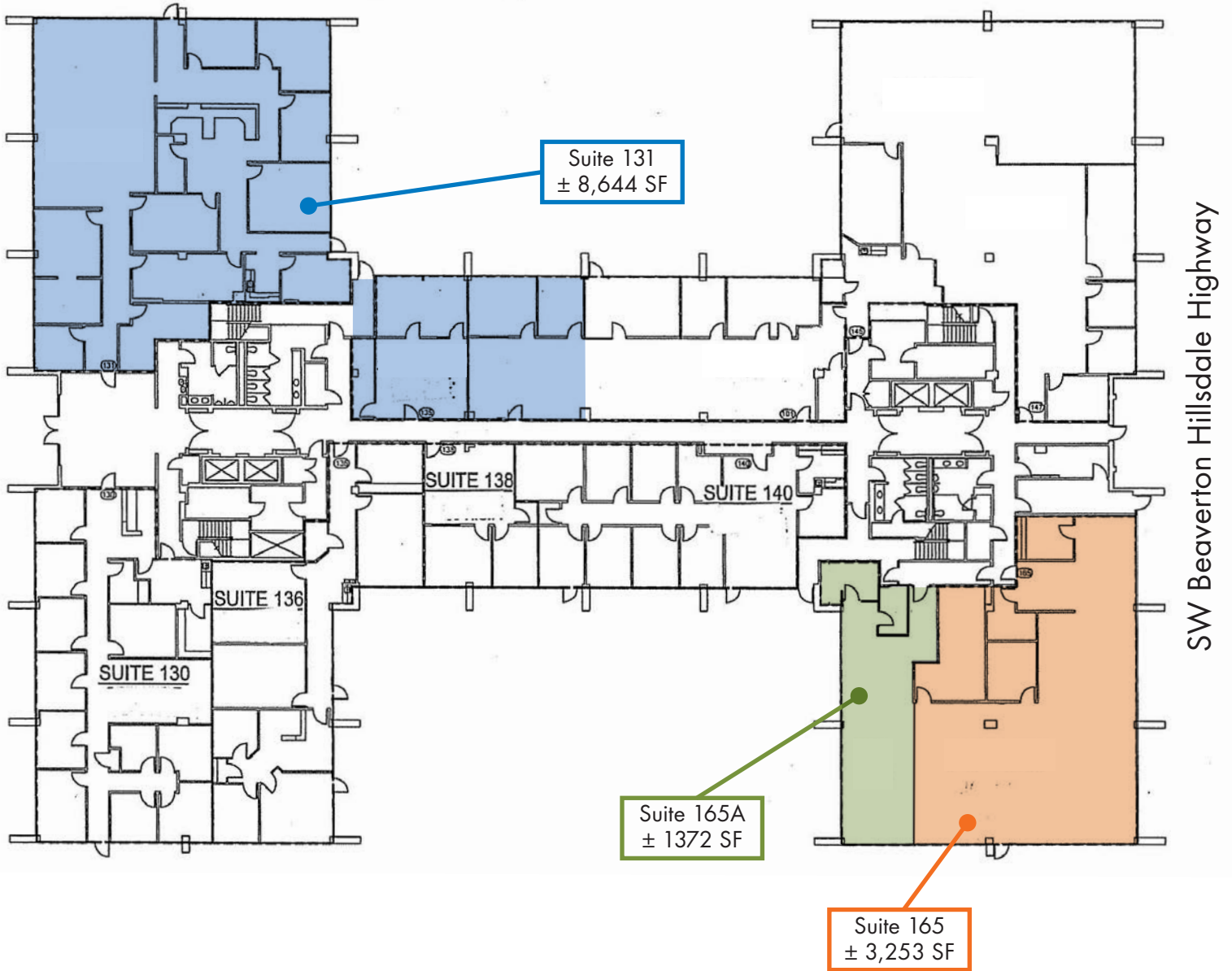
9400 PLACE

9340 - 9400 SW Beaverton Hillsdale Hwy | Beaverton, OR 97005

FOR LEASE

FLOOR PLAN

BUILDING 9400 FIRST FLOOR



For more information or a property tour, please contact:

DUANE LINK

503.225.8465

Duanel@norris-stevens.com



Information contained herein has been obtained from others and considered to be reliable; however, a prospective purchaser or lessee is expected to verify all information to his/her own satisfaction.

Norris & Stevens

INVESTMENT REAL ESTATE SERVICES

900 SW 5th Avenue • 17th Floor • Portland, OR 97204
503.223.3171 • norris-stevens.com

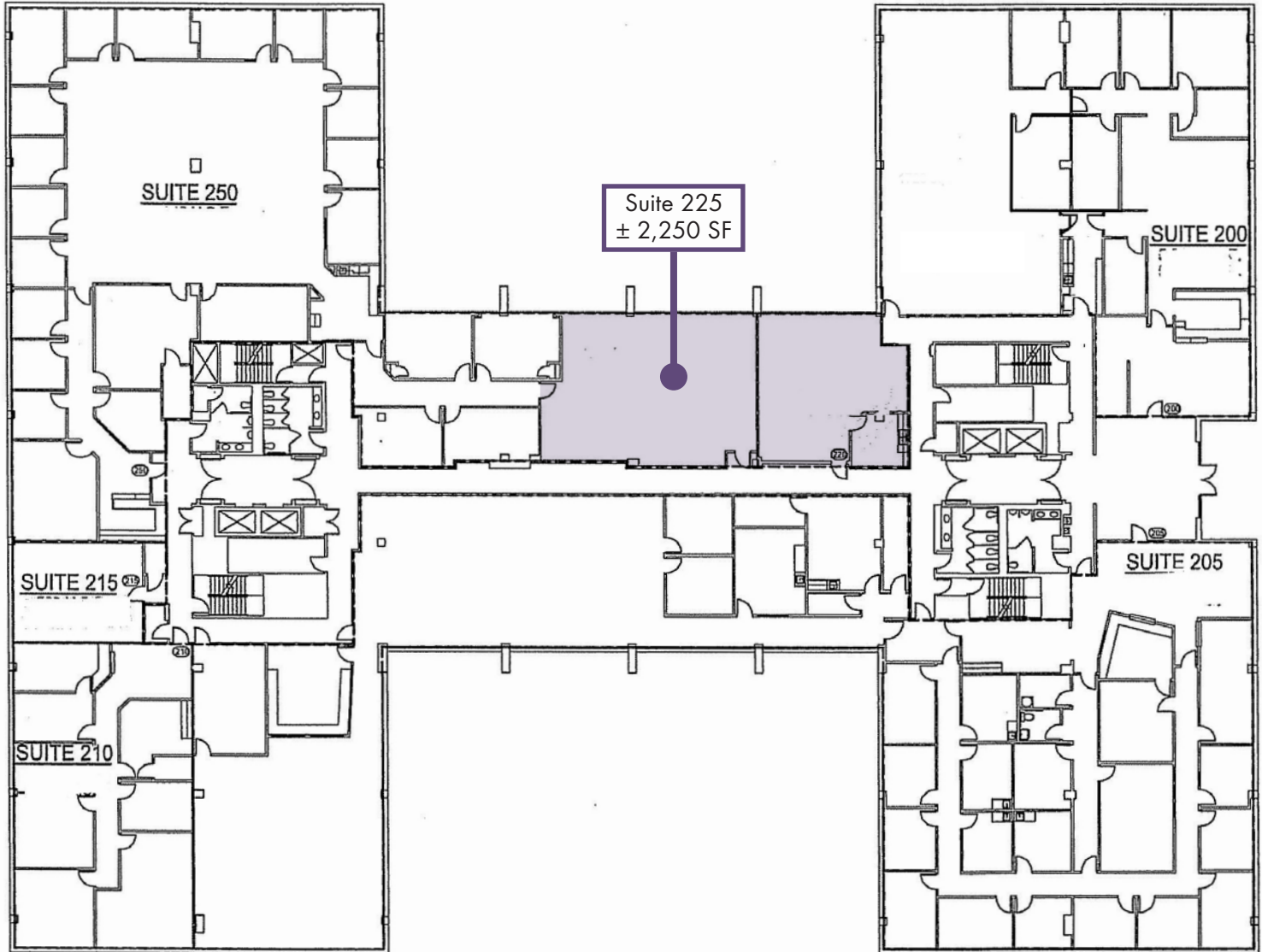
9400 PLACE

9340 - 9400 SW Beaverton Hillsdale Hwy | Beaverton, OR 97005

FOR LEASE

FLOOR PLAN

BUILDING 9400 SECOND FLOOR



For more information or a property tour, please contact:

DUANE LINK
503.225.8465
Duanel@norris-stevens.com



Information contained herein has been obtained from others and considered to be reliable; however, a prospective purchaser or lessee is expected to verify all information to his/her own satisfaction.

Norris & Stevens

INVESTMENT REAL ESTATE SERVICES

900 SW 5th Avenue • 17th Floor • Portland, OR 97204
503.223.3171 • norris-stevens.com