



OFFERING SUMMARY

Available SF:	1000 - 2,500 SF
Lease Rate:	\$14.50 SF/yr (MG)
Year Built:	1999
Building Size:	5,208
Zoning:	E-2
Traffic Count:	22,459 ('16)

PROPERTY OVERVIEW

- 428 W. 15th Suite 1
- 2500 Sqft MOL (Available July 1, 2021)
 - 6 Private Office Suites
 - Reception Area
 - ADA Restroom
 - Copy Room
 - Storage Room
 - Kitchen
- 428 W 15th Suite 2:
- 1500 Sqft MOL
 - 3 Private Office Suites
 - Reception Area
 - ADA Restroom
 - Copy Room
- 428 W 15th Suite 3:
- 1000 Sqft MOL
 - 3 Private Offices
 - Reception
 - Kitchen
 - ADA Restroom

AVAILABLE SPACES

SPACE	LEASE RATE	SIZE (SF)
428 W 15th Suite 2	\$14.50 SF/yr	1,500 SF
428 W 15th Suite 3	\$14.50 SF/yr	1,000 SF
428 W 15th Suite 1	\$14.50 SF/yr	2,500 SF

DEMOGRAPHICS

	1 MILE	3 MILES	5 MILES
Total Households	3,788	27,383	57,128
Total Population	9,463	71,343	144,232
Average HH Income	\$65,352	\$72,732	\$78,840

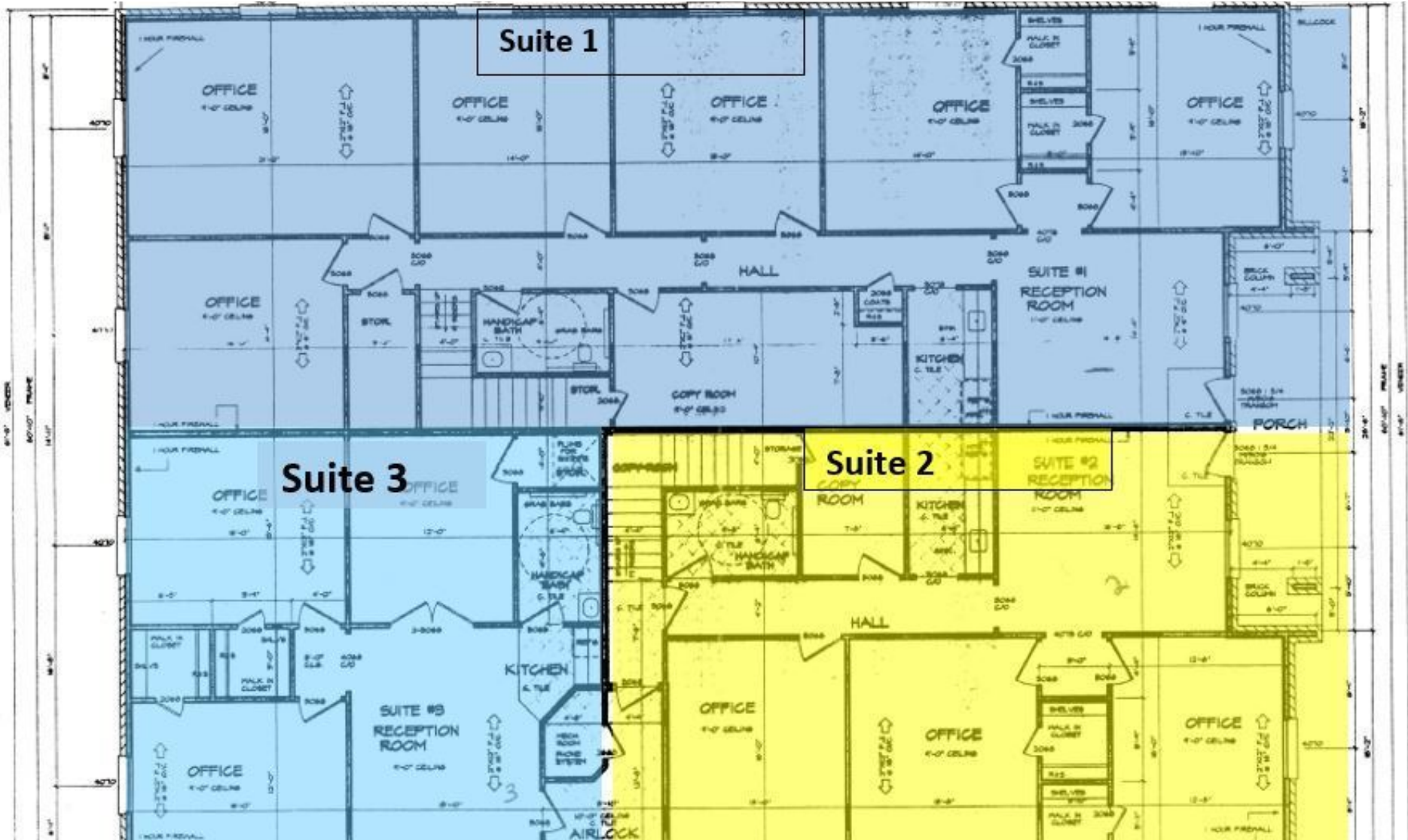
DAVID LIDE

Equity Commercial Realty II, LLC
dlide@equityrealty.net

(405) 361- 2100 cell
(405) 364- 5300 office

OFFICE SPACES FOR LEASE

428 W 15TH ST , EDMOND, OK 73013



DAVID LIDE

Equity Commercial Realty II, LLC
dlide@equityrealty.net

(405) 361- 2100 cell
(405) 364- 5300 office