



OFFERING SUMMARY

Sale Price: Phase I: * \$4.50 / sf .
 **Tract 10 /10 ac-
 8 usable acres +/-
 \$2.00 psf

Phase II: SOLD. Tract 6 - 9 psf

Zoning: C-2

Market: Goldsby/Norman

PROPERTY OVERVIEW

The site is subdivided into two Phases consisting of 25 large lots and five 10 acre tracts. Available lots are *2, 3, 4 Block 1 and Tract 10. City water, electric and gas available. Paved roads. 3 Phase. For more details call Gayla Artman, Broker.

LOCATION OVERVIEW

The development is situated along the east side of Interstate 35 and the south side of Center Road in Goldsby, McClain County, Oklahoma. I-35 runs north - south through central Oklahoma and provides quick access to Oklahoma City about 23.6 mile to the north. The site is accessible from Interstate 35 at the Goldsby exit. Near Goldsby Airport.

SPECIAL MENTION

- Owners will Build To Suit. Building renderings and floor plans available.

PROPERTY HIGHLIGHTS

- Interstate 35 frontage.
- Located just south of Goldsby Airport.
- 23+ miles to Oklahoma City. Minutes from Norman.
- Easy access to and from I-35
- Coming soon.....An Indoor/Outdoor sports facility and much more.

DEMOGRAPHICS

	5 MILES	10 MILES	1250 MILES
Total Households	56	16,255	56,048
Total Population	155	45,118	142,376
Average HH Income	\$66,837	\$56,322	\$62,928

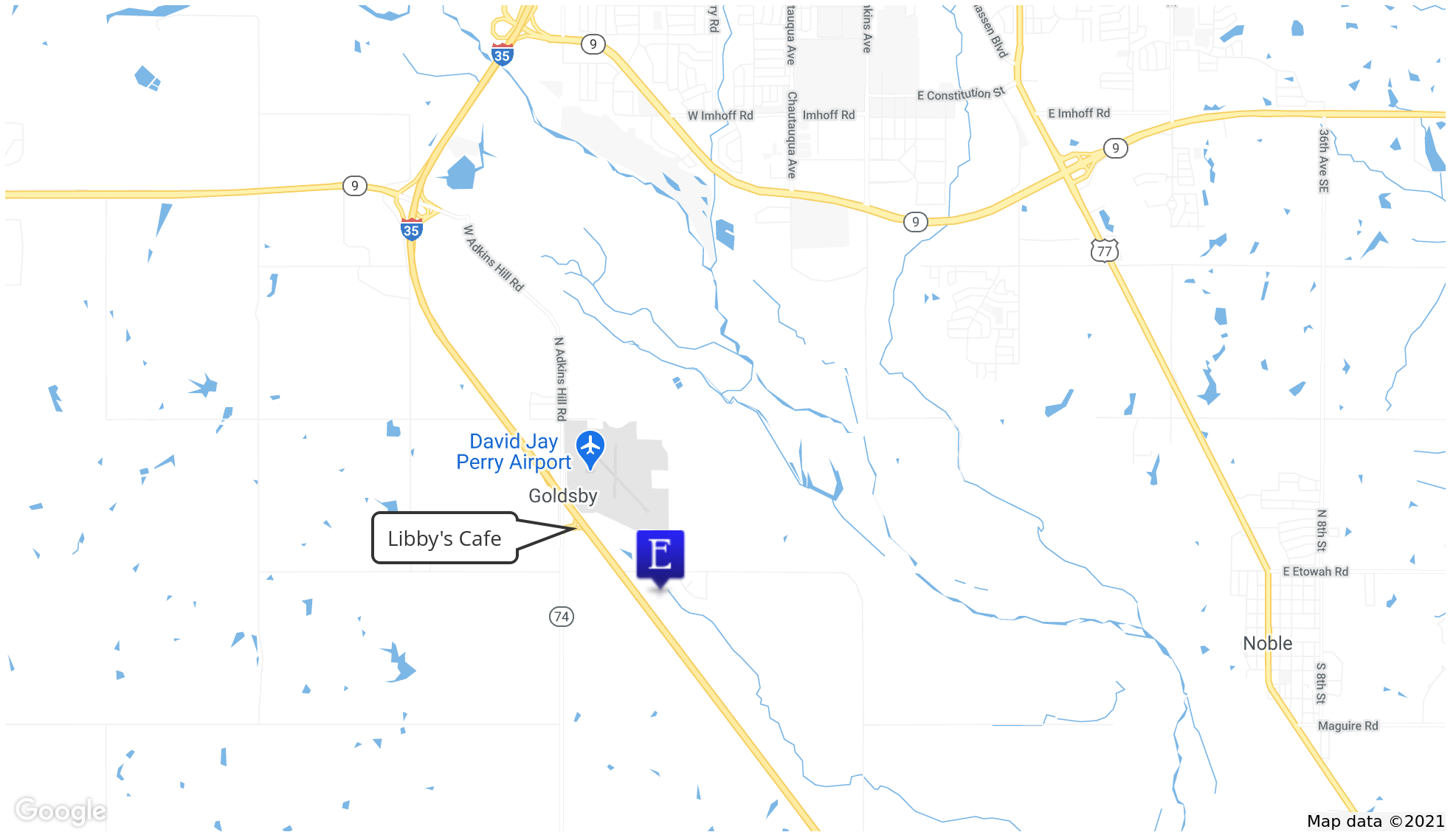
GAYLA ARTMAN

Equity Commercial Realty II, LLC
 gartman@equityrealty.net

(405) 826- 7975 cell
 (405) 364- 5300 office

ADKINS CROSSING

I-35 FRONTAGE, GOLDSBY, OK



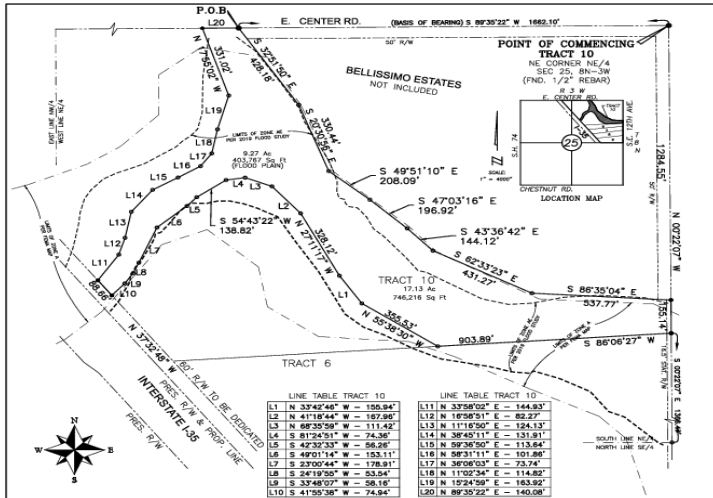
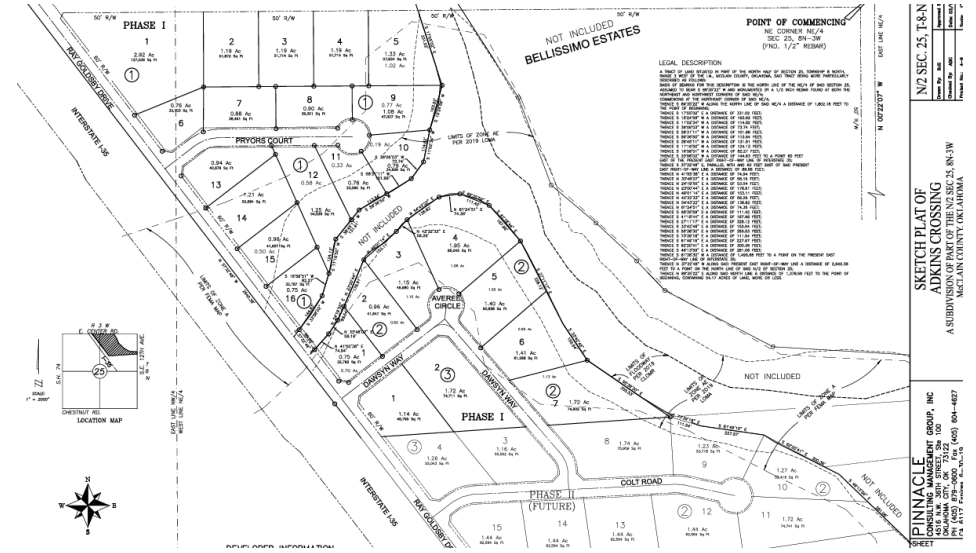
GAYLA ARTMAN

Equity Commercial Realty II, LLC
gartman@equityrealty.net

(405) 826- 7975 cell
(405) 364- 5300 office

ADKINS CROSSING

ADKINS CROSSING I-35, GOLDSBY, OK 73093



TRACT 10
PROPERTY EXHIBIT
ADKINS-COLDSBY FAMILY FARM
ADKINS-COLDSBY FAMILY FARM
TOWN OF GOLDSBY,
SEC. 25, T8N, R3W
McCLAIN COUNTY, OKLAHOMA

Drawn By: B.C. Date: 02/26/19
Checked By: A.S.C.
Project No.: 84-19
Sheet 2 of 2



GAYLA ARTMAN

Equity Commercial Realty II, LLC
gartman@equityrealty.net

(405) 826- 7975 cell
(405) 364- 5300 office

