

# MEDICAL MART BUILDING

623 N. PORTER SUITE 200, NORMAN, OK 73069



## OFFERING SUMMARY

Available SF: 1,250 SF

Monthly Rent: \$14.00 Month (MG)

Tenant Pays Utilities & CAM:  
Gas, electric and share of water, trash, sewer.

Year Built: 1998

Building Size: 10,005

## PROPERTY OVERVIEW

Suite 200 available; 1,250 square feet. Restrooms in common area of building. Plenty of parking. Private entrance to suite from the parking lot. Medical Mart is the anchor tenant. Multi tenant signage available.

## PROPERTY HIGHLIGHTS

- Located in central Norman blocks from downtown and Norman Regional Hospital.
- Restaurants nearby.
- Reception area, private offices, and break room/conference room. Common area conference room available by request.

## DEMOGRAPHICS

	1 MILE	3 MILES	5 MILES
Total Households	4,020	26,586	44,338
Total Population	8,967	69,100	112,189
Average HH Income	\$42,274	\$50,786	\$61,340

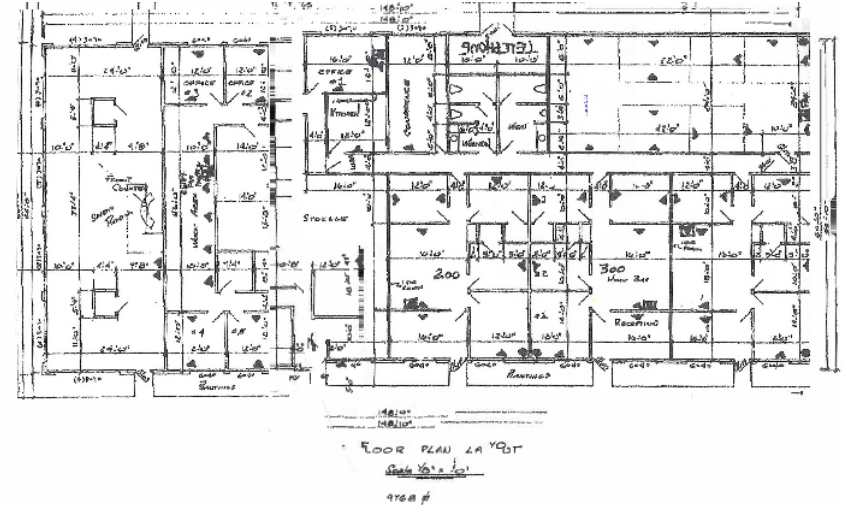
## GAYLA ARTMAN

Equity Commercial Realty II, LLC  
gartman@equityrealty.net

(405) 826- 7975 cell  
(405) 364- 5300 office

# MEDICAL MART BUILDING

623 N. PORTER SUITE 200, NORMAN, OK 73069



**GAYLA ARTMAN**

Equity Commercial Realty II, LLC  
gartman@equityrealty.net

(405) 826- 7975 cell  
(405) 364- 5300 office