



Medical Office For Lease

1,719 SF available



Edward Plainfield I, Building B

24600 W 127th Street, Plainfield, IL 60585

Kevin J. O'Donnell
Managing Broker
630.444.0444
kevin@odcre.com

Meredith L. Klug
Broker
630.444.0444
meredith@odcre.com

Edward Plainfield I, Building B

24600 W 127th Street, Plainfield, IL 60585

Medical Office For Lease



OFFERING SUMMARY

Available SF: 1,719 SF

Lease Rate: Negotiable

Building Size: 56,531 SF

PROPERTY HIGHLIGHTS

- Located on Edward Plainfield Campus
- On-campus cancer center & emergency department
- Additional ancillary services provided by the on-campus outpatient and surgery centers
- The building is owned and professionally managed by Healthcare Trust of America, Inc., experts in the management of medical office properties nationwide

DEMOGRAPHICS

	1 Mile	3 Miles	5 Miles
Total Households:	2,111	10,938	34,990
Total Population:	7,268	38,258	118,587
Average HH Income:	\$117,598	\$130,201	\$128,247

for more information contact:

Kevin J. O'Donnell
Managing Broker
t: 630.444.0444
e: kevin@odcre.com

Meredith L. Klug
Broker
t: 630.444.0444
e: meredith@odcre.com

Edward Plainfield I, Building B

24600 W 127th Street, Plainfield, IL 60585

Medical Office For Lease

LEASE INFORMATION

Lease Type:	NNN	Lease Term:	Negotiable
Total Space:	1,719 SF	Lease Rate:	Negotiable

AVAILABLE SPACES

SUITE	TENANT	SIZE (SF)	LEASE TYPE	LEASE RATE	DESCRIPTION
310	Available	1,719 SF	NNN	Negotiable	Built out medical

for more information contact:

Kevin J. O'Donnell
 Managing Broker
 t: 630.444.0444
 e: kevin@odcre.com

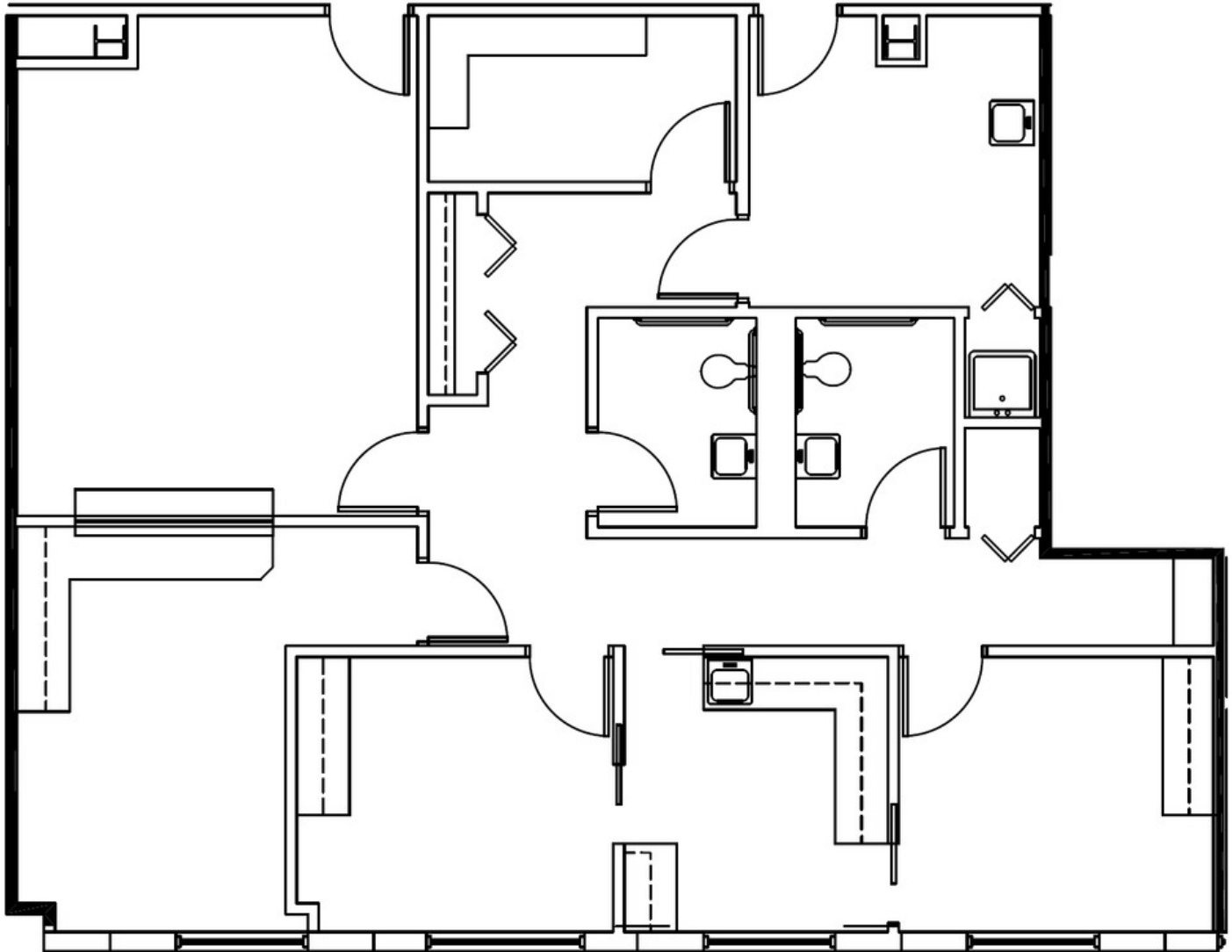
Meredith L. Klug
 Broker
 t: 630.444.0444
 e: meredith@odcre.com

FLOOR PLANS
SUITE 310
1,719 RSF

Edward Plainfield I, Building B

24600 W 127th Street, Plainfield, IL 60585

Office Property For Lease



for more information contact:

Kevin J. O'Donnell
Managing Broker
t: 630.444.0444
e: kevin@odcre.com

Meredith L. Klug
Broker
t: 630.444.0444
e: meredith@odcre.com

ADDITIONAL
PHOTOS

Edward Plainfield I, Building B

24600 W 127th Street, Plainfield, IL 60585

Medical Office For Lease



for more information contact:

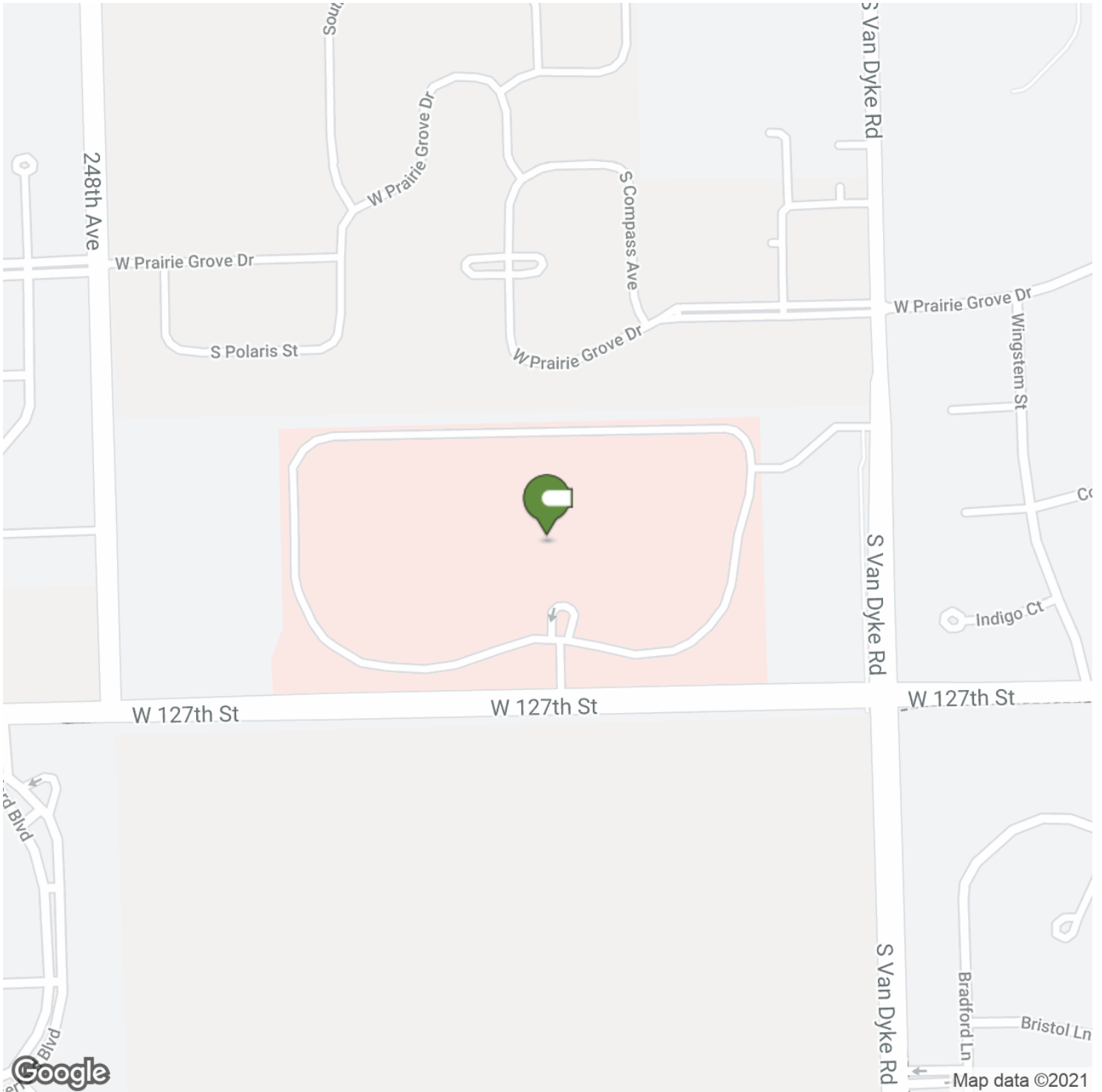
Kevin J. O'Donnell
Managing Broker
t: 630.444.0444
e: kevin@odcre.com

Meredith L. Klug
Broker
t: 630.444.0444
e: meredith@odcre.com

Edward Plainfield I, Building B

24600 W 127th Street, Plainfield, IL 60585

Medical Office For Lease



for more information contact:

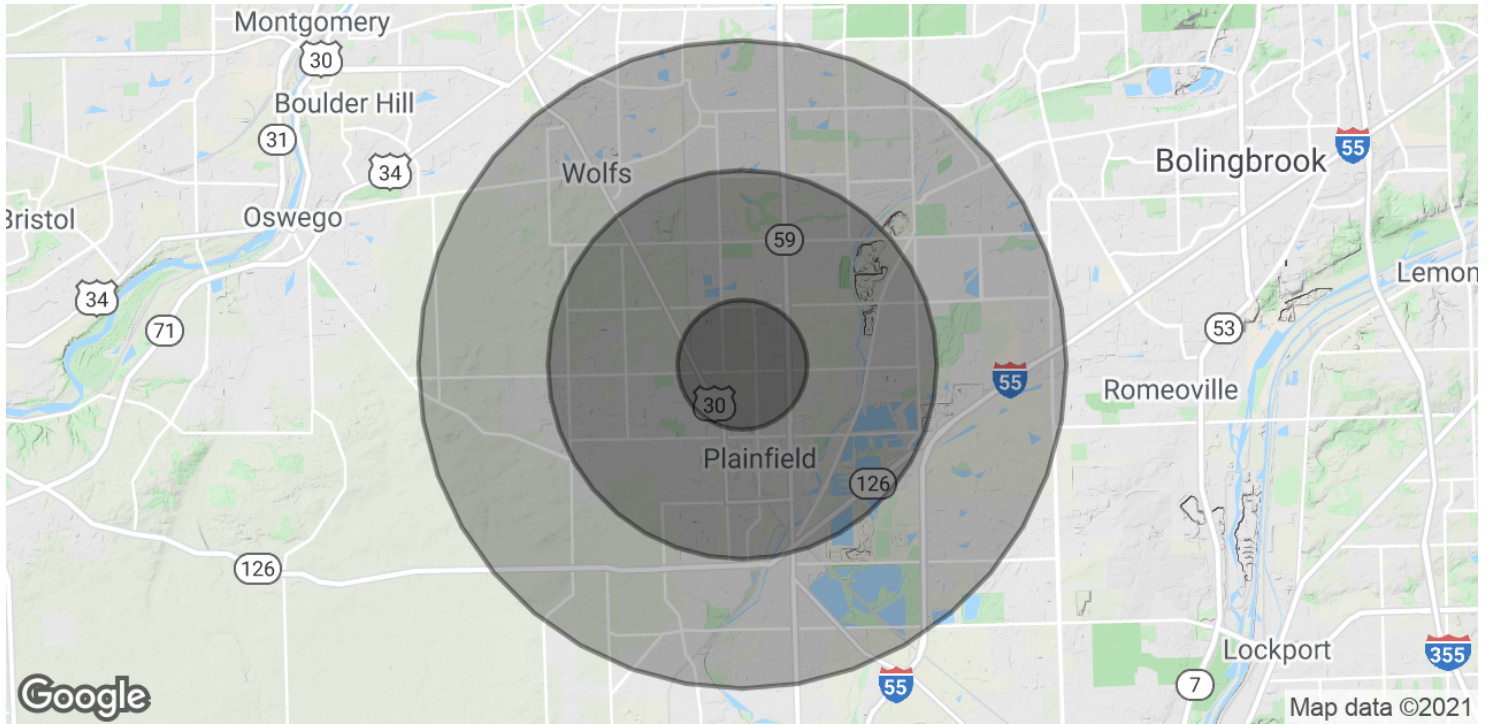
Kevin J. O'Donnell
Managing Broker
t: 630.444.0444
e: kevin@odcre.com

Meredith L. Klug
Broker
t: 630.444.0444
e: meredith@odcre.com

Edward Plainfield I, Building B

24600 W 127th Street, Plainfield, IL 60585

Medical Office For Lease



POPULATION

	1 MILE	3 MILES	5 MILES
Total Population	7,268	38,258	118,587
Average age	31.7	33.1	33.4
Average age (Male)	31.7	31.7	32.4
Average age (Female)	31.7	33.8	34.2

HOUSEHOLDS & INCOME

	1 MILE	3 MILES	5 MILES
Total households	2,111	10,938	34,990
# of persons per HH	3.4	3.5	3.4
Average HH income	\$117,598	\$130,201	\$128,247
Average house value	\$410,931	\$420,366	\$410,471

* Demographic data derived from 2010 US Census

for more information contact:

Kevin J. O'Donnell
Managing Broker
t: 630.444.0444
e: kevin@odcre.com

Meredith L. Klug
Broker
t: 630.444.0444
e: meredith@odcre.com