

Property Highlights:

- +/- 1,100 Acres
- Majority of property is located in Zachary School District
- Not in a flood zone
- \$8,182 per acre
- **Price Reduced: \$9,000,000.00**

Burden Edmonds

25.931.9222 | bedmonds@beaubox.com

909 Poydras St., Suite 3025, New Orleans, LA. 70112 | 504.525.1410 | www.beaubox.com

Broker of Record, Beau J. Box; Licensed by the Louisiana Real Estate Commission, Mississippi Real Estate Commission, Alabama Real Estate Commission, and Florida Real Estate Commission, USA. This information has been secured from sources we believe to be reliable, but we make no representations or warranties, expressed or implied, as to the accuracy of the information. References to square footage or age are approximate. Buyer must verify the information and bears all risk for any inaccuracies. © Beau Box Commercial Real Estate. January 25, 2021 9:03 AM



1,100 Acre Development Site For Sale

Zachary, LA

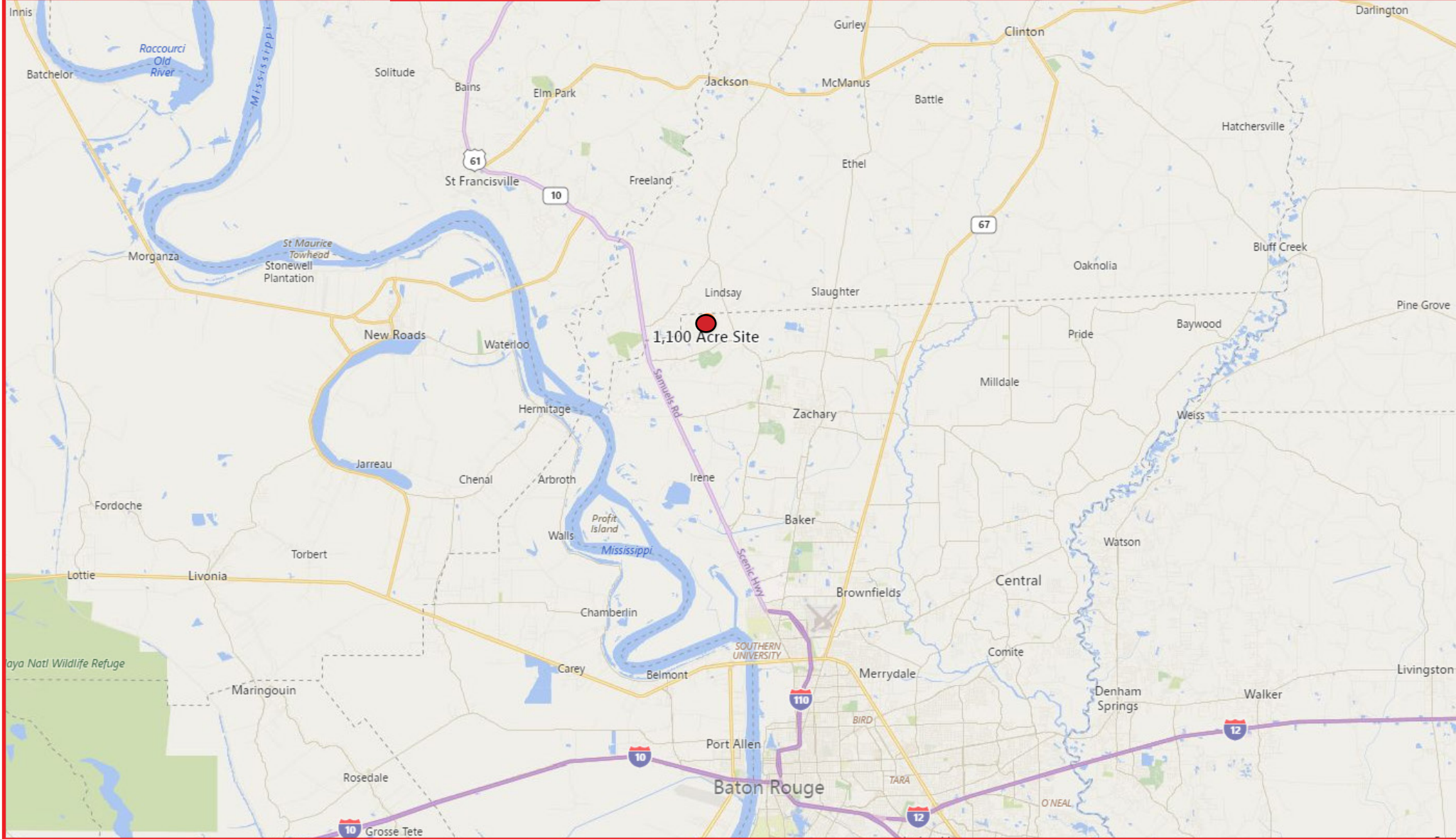
Overview

Location

Plat Map

Plat Map

Plat Map



Burden Edmonds

25.931.9222 | bedmonds@beaubox.com

909 Poydras St., Suite 3025, New Orleans, LA. 70112 | 504.525.1410 | www.beaubox.com

Broker of Record, Beau J. Box; Licensed by the Louisiana Real Estate Commission, Mississippi Real Estate Commission, Alabama Real Estate Commission, and Florida Real Estate Commission, USA. This information has been secured from sources we believe to be reliable, but we make no representations or warranties, expressed or implied, as to the accuracy of the information. References to square footage or age are approximate. Buyer must verify the information and bears all risk for any inaccuracies. © Beau Box Commercial Real Estate. January 25, 2021 9:03 AM



1,100 Acre Development Site For Sale

Zachary, LA

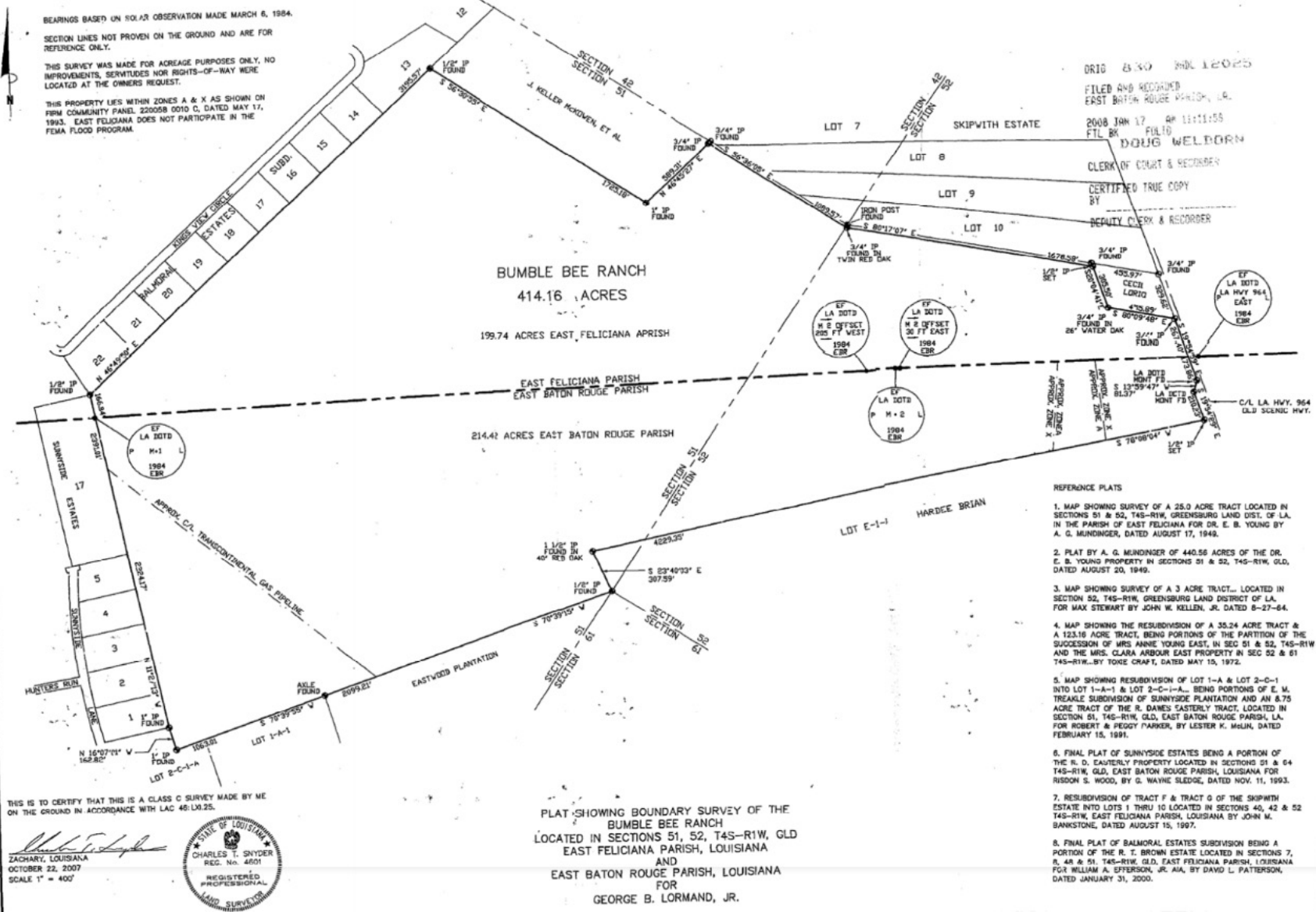
Overview

Location

Plat Map

Plat Map

Plat Map



Burden Edmonds
25.931.9222 | bedmonds@beaubox.com

909 Poydras St., Suite 3025, New Orleans, LA. 70112 | 504.525.1410 | www.beaubox.com

Broker of Record, Beau J. Box; Licensed by the Louisiana Real Estate Commission, Mississippi Real Estate Commission, Alabama Real Estate Commission, and Florida Real Estate Commission, USA. This information has been secured from sources we believe to be reliable, but we make no representations or warranties, expressed or implied, as to the accuracy of the information. References to square footage or age are approximate. Buyer must verify the information and bears all risk for any inaccuracies. © Beau Box Commercial Real Estate. January 25, 2021 9:03 AM



1,100 Acre Development Site For Sale

Zachary, LA

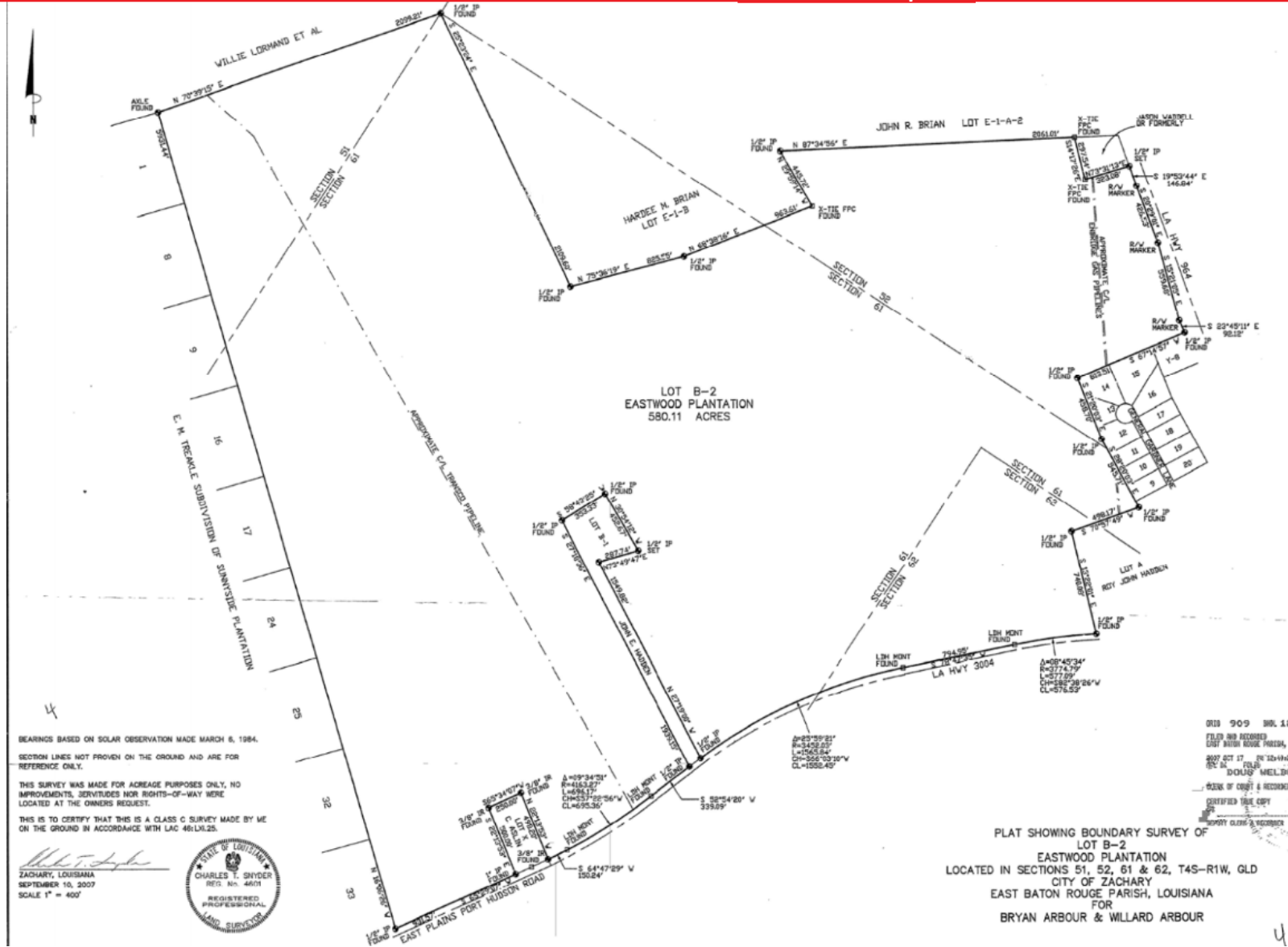
Overview

Location

Plat Map

Plat Map

Plat Map



010 909 806.1E
FILED AND RECORDED
COUNTY WITH ROUGE PARISH, LA
NOV OCT 17 PM 12:41:27
BY SA FILED
"DOUG" MELBO
CLERK OF COURT & RECORDER
CERTIFIED TRUE COPY
"BRYAN ARBOUR & WILLARD ARBOUR"

4

Burden Edmonds
25.931.9222 | bedmonds@beaubox.com

Broker of Record, Beau J. Box; Licensed by the Louisiana Real Estate Commission, Mississippi Real Estate Commission, Alabama Real Estate Commission, and Florida Real Estate Commission, USA. This information has been secured from sources we believe to be reliable, but we make no representations or warranties, expressed or implied, as to the accuracy of the information. References to square footage or age are approximate. Buyer must verify the information and bears all risk for any inaccuracies. © Beau Box Commercial Real Estate. January 25, 2021 9:03 AM

909 Poydras St., Suite 3025, New Orleans, LA. 70112 | 504.525.1410 | www.beaubox.com



1,100 Acre Development Site For Sale

Zachary, LA

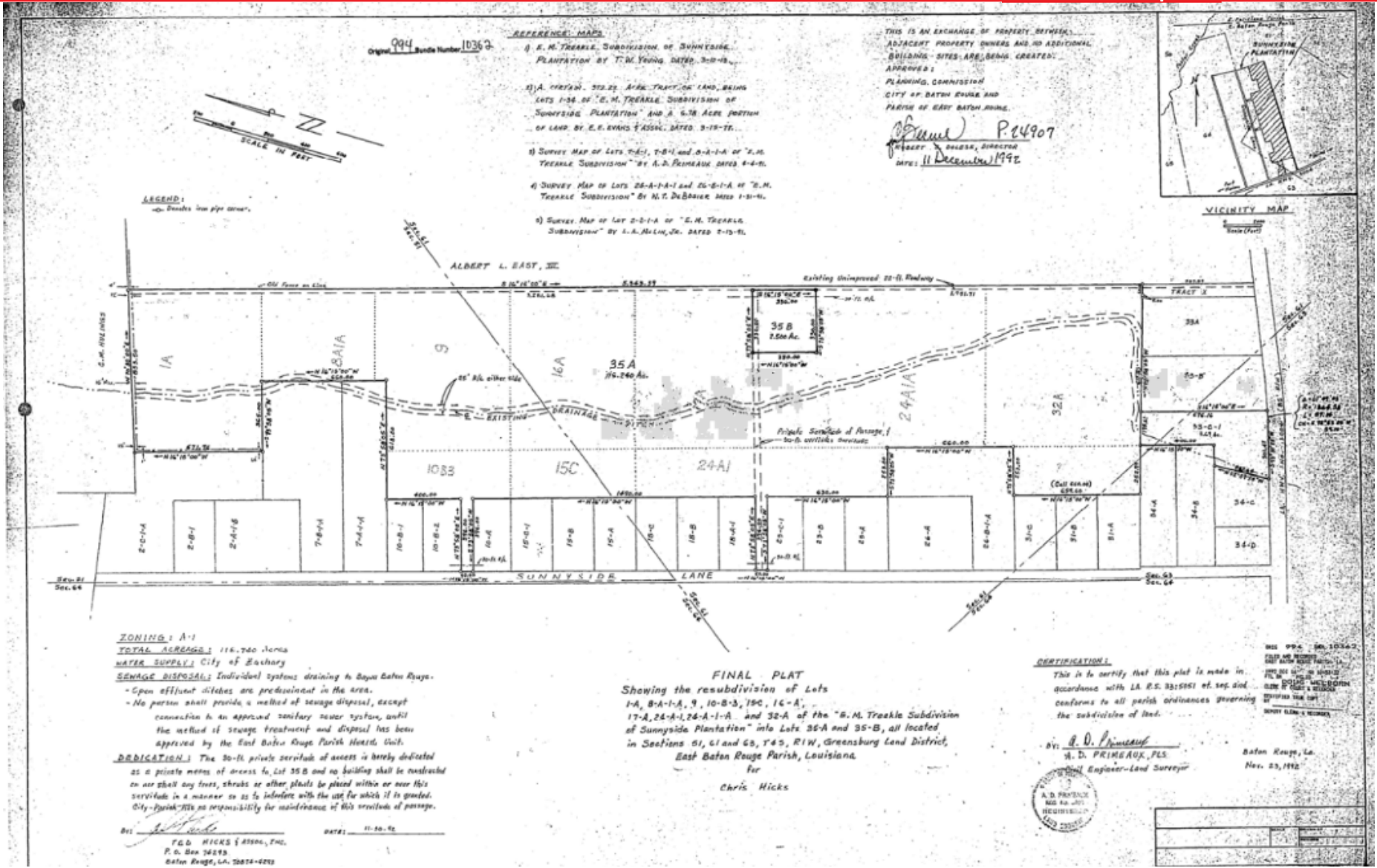
Overview

Location

Plat Map

Plat Map

Plat Map



Burden Edmonds
25.931.9222 | bedmonds@beaubox.com

Broker of Record, Beau J. Box; Licensed by the Louisiana Real Estate Commission, Mississippi Real Estate Commission, Alabama Real Estate Commission, and Florida Real Estate Commission, USA. This information has been secured from sources we believe to be reliable, but we make no representations or warranties, expressed or implied, as to the accuracy of the information. References to square footage or age are approximate. Buyer must verify the information and bears all risk for any inaccuracies. © Beau Box Commercial Real Estate. January 25, 2021 9:03 AM

909 Poydras St., Suite 3025, New Orleans, LA. 70112 | 504.525.1410 | www.beaubox.com