



Vacant Land For Sale

Pontchartrain Drive, Slidell, LA

Overview

Location

Site Plan

Aerial

Drone Images

Merchants



Property Highlights:

- Vacant Land for sale on Pontchartrain Drive
- 80,000 SF
- 200' x 400'
- 2018 - 21,709 ADT
- Zoning C-4
- Adjacent corner lot could be acquired as well
- Sale Price: \$550,000

Burden Edmonds

225.931.9222 | bedmonds@beaubox.com

Brad Pyburn

504.352.0135 | bpyburn@beaubox.com

909 Poydras St., Suite 3025, New Orleans, LA. 70112 | 504.525.1410 | www.beaubox.com

Broker of Record, Beau J. Box; Licensed by the Louisiana Real Estate Commission, Mississippi Real Estate Commission, Alabama Real Estate Commission, and Florida Real Estate Commission, USA. This information has been secured from sources we believe to be reliable, but we make no representations or warranties, expressed or implied, as to the accuracy of the information. References to square footage or age are approximate. Buyer must verify the information and bears all risk for any inaccuracies. © Beau Box Commercial Real Estate. November 6, 2019 10:25 AM



Vacant Land For Sale

Pontchartrain Drive, Slidell, LA

Overview

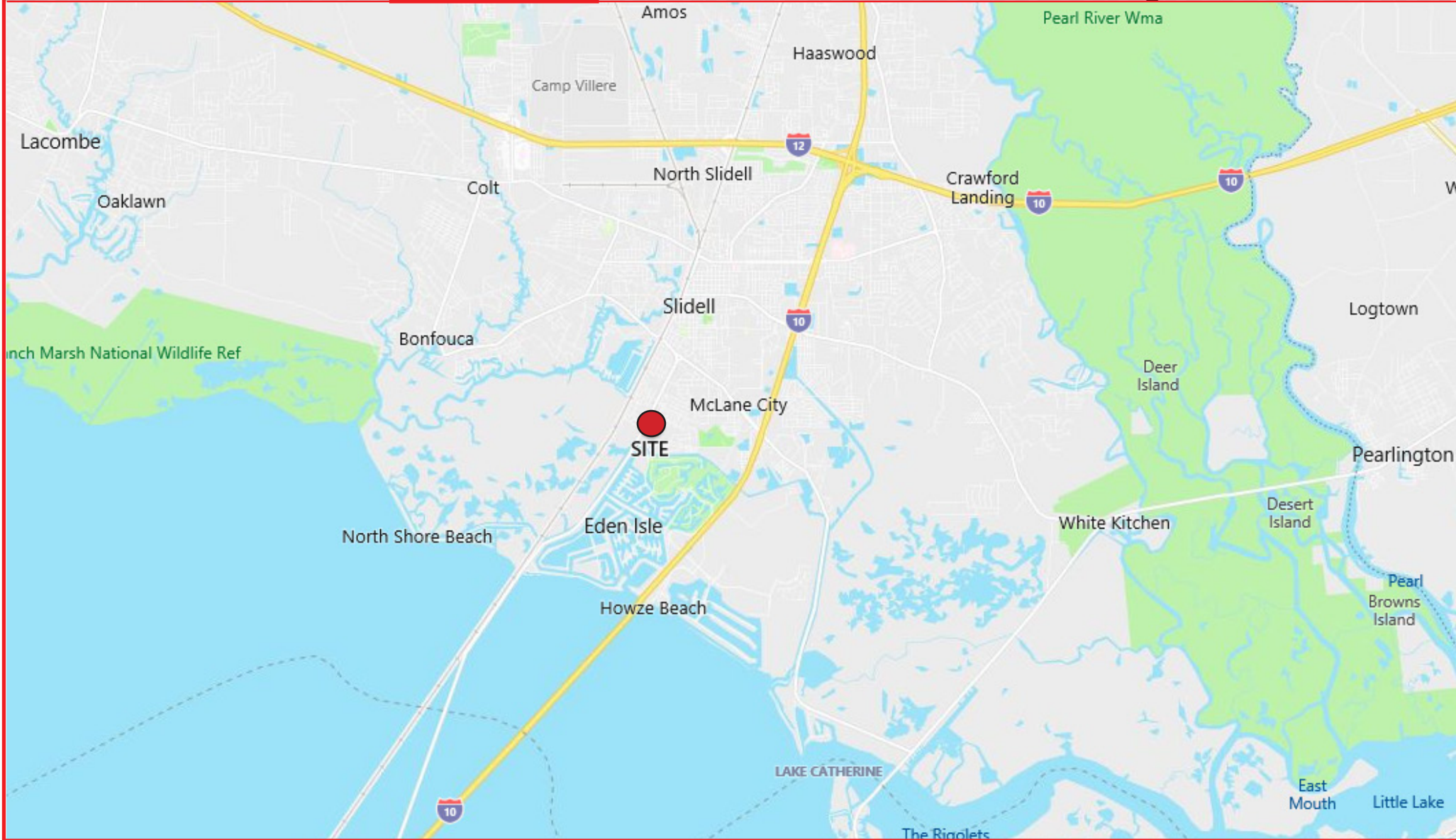
Location

Site Plan

Aerial

Drone Images

Merchants



Burden Edmonds

225.931.9222 | bedmonds@beaibox.com

Brad Pyburn

504.352.0135 | bpyburn@beaibox.com

909 Poydras St., Suite 3025, New Orleans, LA. 70112 | 504.525.1410 | www.beaibox.com

Broker of Record, Beau J. Box; Licensed by the Louisiana Real Estate Commission, Mississippi Real Estate Commission, Alabama Real Estate Commission, and Florida Real Estate Commission, USA. This information has been secured from sources we believe to be reliable, but we make no representations or warranties, expressed or implied, as to the accuracy of the information. References to square footage or age are approximate. Buyer must verify the information and bears all risk for any inaccuracies. © Beau Box Commercial Real Estate. November 6, 2019 10:25 AM



Vacant Land For Sale

Pontchartrain Drive, Slidell, LA

Overview

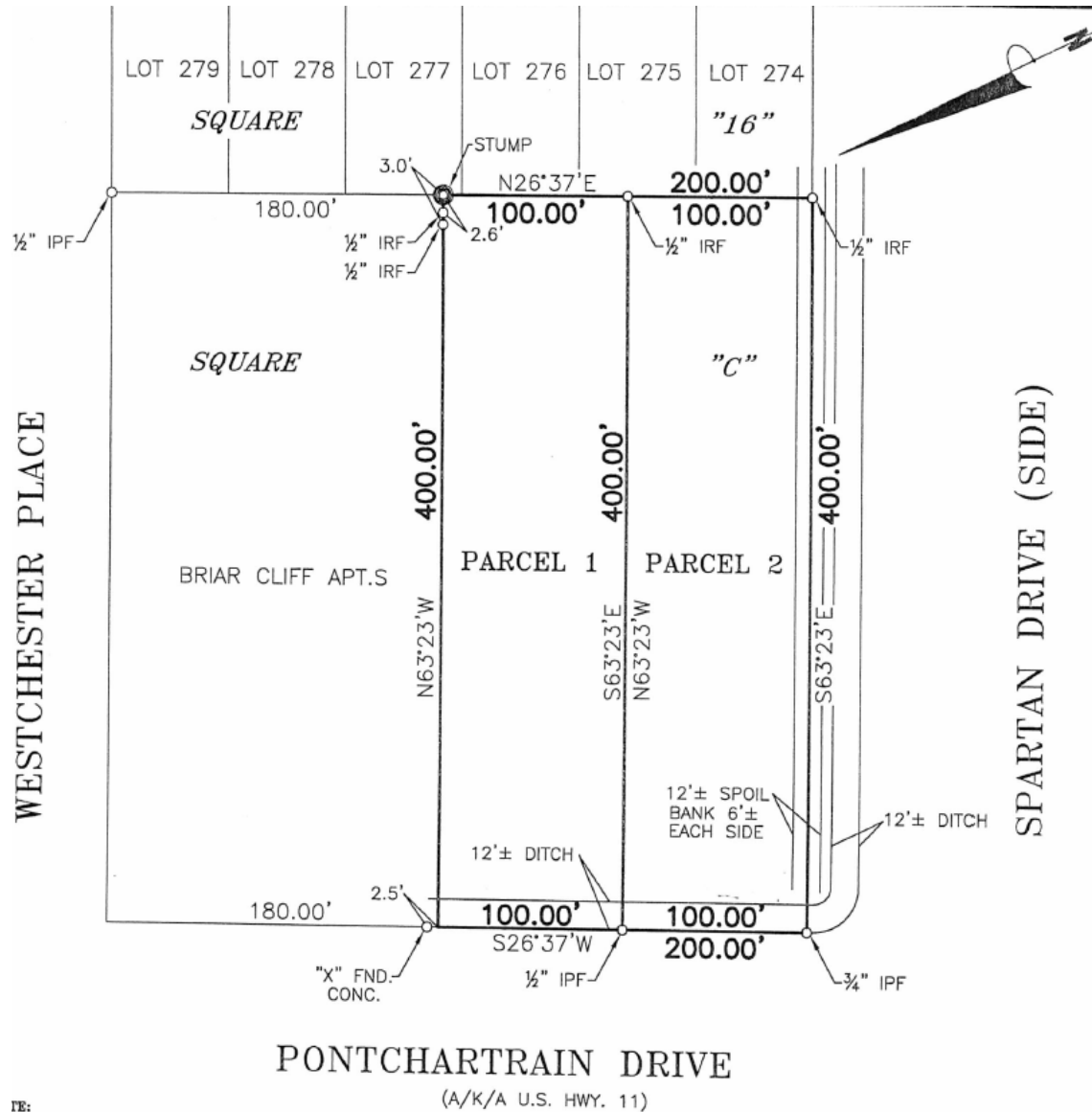
Location

Site Plan

Aerial

Drone Images

Merchants



TE:

Burden Edmonds

225.931.9222 | bedmonds@beaubox.com

Brad Pyburn

504.352.0135 | bpyburn@beaubox.com

Broker of Record, Beau J. Box; Licensed by the Louisiana Real Estate Commission, Mississippi Real Estate Commission, Alabama Real Estate Commission, and Florida Real Estate Commission, USA. This information has been secured from sources we believe to be reliable, but we make no representations or warranties, expressed or implied, as to the accuracy of the information. References to square footage or age are approximate. Buyer must verify the information and bears all risk for any inaccuracies. © Beau Box Commercial Real Estate. November 6, 2019 10:25 AM

909 Poydras St., Suite 3025, New Orleans, LA. 70112 | 504.525.1410 | www.beaubox.com



Vacant Land For Sale

Pontchartrain Drive, Slidell, LA

Overview

Location

Site Plan

Aerial

Drone Images

Merchants



Burden Edmonds

225.931.9222 | bedmonds@beaubox.com

Brad Pyburn

504.352.0135 | bpyburn@beaubox.com

909 Poydras St., Suite 3025, New Orleans, LA. 70112 | 504.525.1410 | www.beaubox.com

Broker of Record, Beau J. Box; Licensed by the Louisiana Real Estate Commission, Mississippi Real Estate Commission, Alabama Real Estate Commission, and Florida Real Estate Commission, USA. This information has been secured from sources we believe to be reliable, but we make no representations or warranties, expressed or implied, as to the accuracy of the information. References to square footage or age are approximate. Buyer must verify the information and bears all risk for any inaccuracies. © Beau Box Commercial Real Estate. November 6, 2019 10:25 AM



Vacant Land For Sale

Pontchartrain Drive, Slidell, LA

Overview

Location

Site Plan

Aerial

Drone Images

Merchants



Burden Edmonds

225.931.9222 | bedmonds@beaubox.com

Brad Pyburn

504.352.0135 | bpyburn@beaubox.com

909 Poydras St., Suite 3025, New Orleans, LA. 70112 | 504.525.1410 | www.beaubox.com

Broker of Record, Beau J. Box; Licensed by the Louisiana Real Estate Commission, Mississippi Real Estate Commission, Alabama Real Estate Commission, and Florida Real Estate Commission, USA. This information has been secured from sources we believe to be reliable, but we make no representations or warranties, expressed or implied, as to the accuracy of the information. References to square footage or age are approximate. Buyer must verify the information and bears all risk for any inaccuracies. © Beau Box Commercial Real Estate. November 6, 2019 10:25 AM



Vacant Land For Sale

Pontchartrain Drive, Slidell, LA

Overview

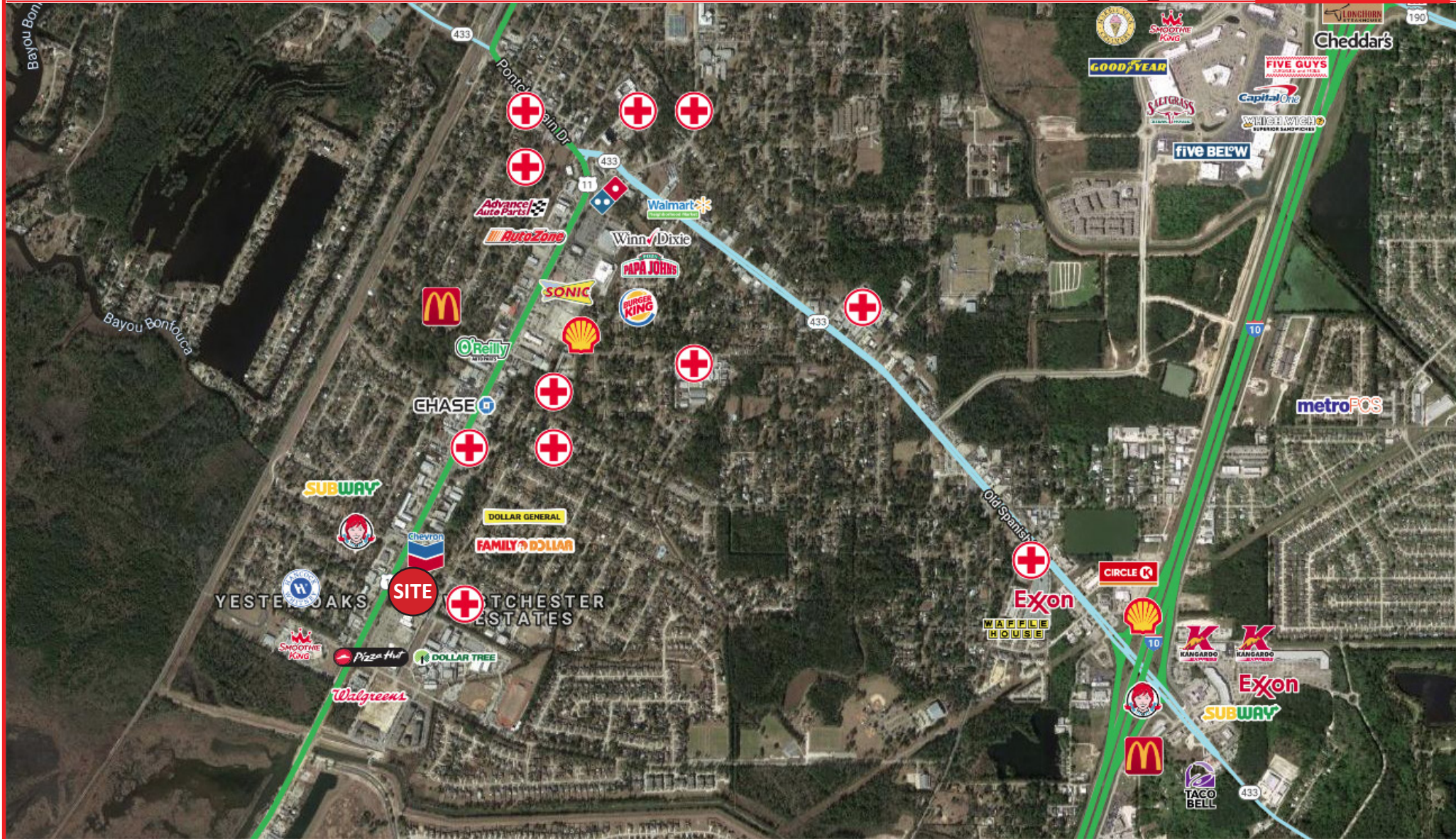
Location

Site Plan

Aerial

Drone Images

Merchants



Burden Edmonds

225.931.9222 | bedmonds@beaubox.com

Brad Pyburn

504.352.0135 | bpyburn@beaubox.com

909 Poydras St., Suite 3025, New Orleans, LA. 70112 | 504.525.1410 | www.beaubox.com

Broker of Record, Beau J. Box; Licensed by the Louisiana Real Estate Commission, Mississippi Real Estate Commission, Alabama Real Estate Commission, and Florida Real Estate Commission, USA. This information has been secured from sources we believe to be reliable, but we make no representations or warranties, expressed or implied, as to the accuracy of the information. References to square footage or age are approximate. Buyer must verify the information and bears all risk for any inaccuracies. © Beau Box Commercial Real Estate. November 6, 2019 10:25 AM