

# Jeanerette Industrial Site For Sale

400 CANAL ST JEANERETTE LA, 70544

Jeanerette , LA

Monty Warren, SIOR | 337.233.1488 | mwarren@beaubox.com  
Brandon Abdella | 337.233.1488 | babdella@beaubox.com



## PROPERTY SUMMARY



## Property Description

The property located at 400 Canal St. in Jeanerette, Louisiana is made up of one large irregular parcel, one smaller rectangular parcel, and an additional smaller irregular parcel, totaling 13.07 acres. The office building is 20,953 SF. The front warehouse is 10,600 SF. The Storage Warehouse is 10,600 SF. The main warehouse is 72,314 SF, and the rear smaller warehouse is 5,986 SF, for a total of 110,628 SF.

## Property Highlights

- Former Honiron Industrial Site for sale.
- Ideal for manufacturing/ distribution use.
- Property contains 5 buildings, totaling +/- 110,628 SF.
- Property has (11) cranes; (3) 20 ton, (2) 10 ton, and (6) 5 ton.

## Offering Summary

Sale Price:	\$2,212,560
Building Size:	110,628 SF
\$PSF:	\$20.00

Demographics	1 Mile	5 Miles	10 Miles
Total Households	29	597	5,419
Total Population	84	1,730	14,955
Average HH Income	\$48,798	\$48,139	\$58,602

**Monty Warren, SIOR** 337.233.1488  
mwarren@beaubox.com

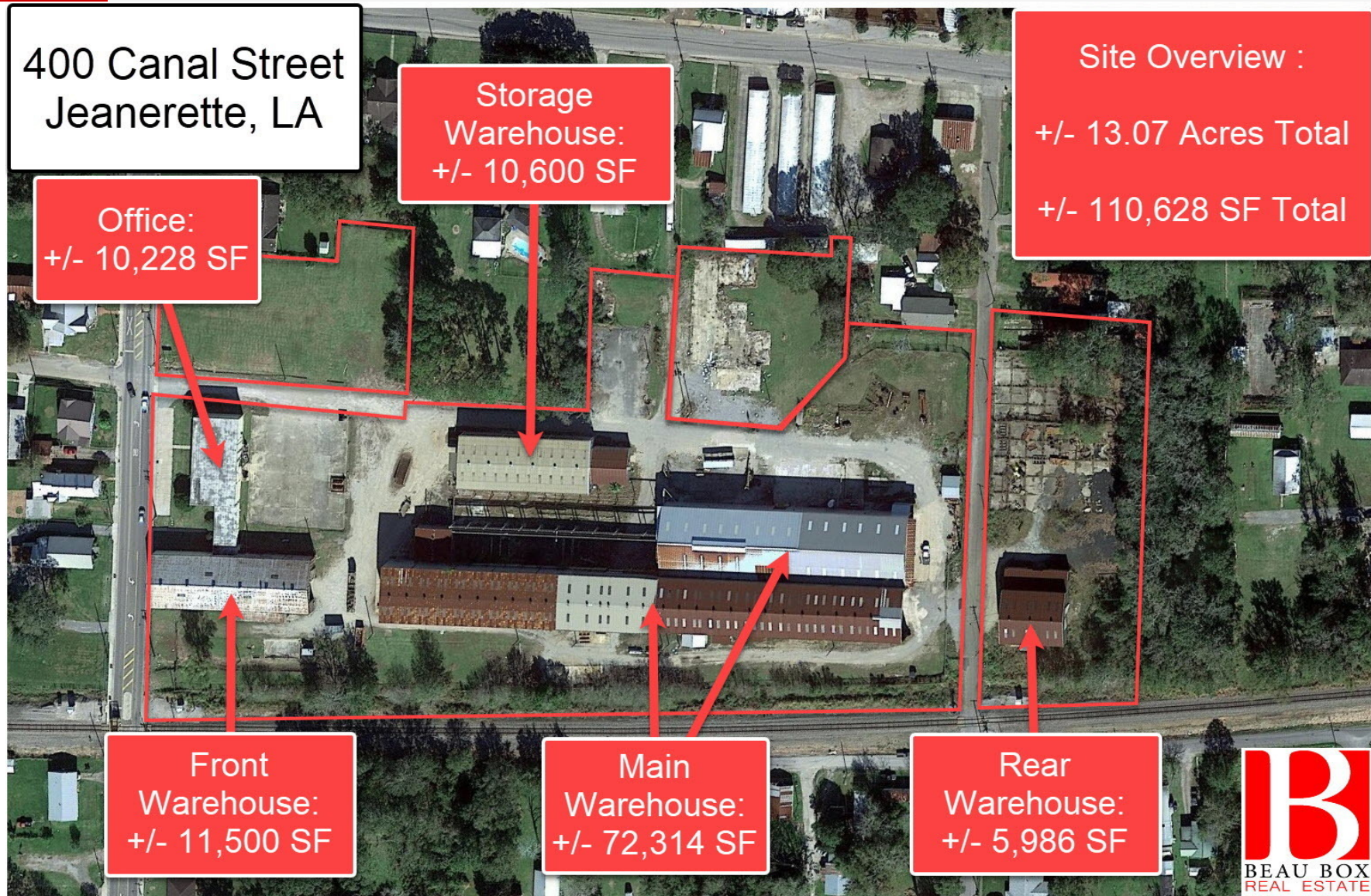
**Brandon Abdella** 337.233.1488  
babdella@beaubox.com

Broker of Record, Beau J. Box; Licensed by the Louisiana Real Estate Commission, Mississippi Real Estate Commission, Alabama Real Estate Commission and Florida Real Estate Commission, USA. This information has been secured from sources we believe to be reliable, but we make no representations or warranties, expressed or implied, as to the accuracy of the information. References to square footage or age are approximate. Buyer must verify the information and bears all risk for any inaccuracies. © Beau Box Commercial Real Estate. | May 14, 2021





**SITE OVERVIEW**



**Monty Warren, SIOR**   **Brandon Abdella**  
337.233.1488   337.233.1488  
mwarren@beaubox.com   babdella@beaubox.com

Broker of Record, Beau J. Box; Licensed by the Louisiana Real Estate Commission, Mississippi Real Estate Commission, Alabama Real Estate Commission and Florida Real Estate Commission, USA. This information has been secured from sources we believe to be reliable, but we make no representations or warranties, expressed or implied, as to the accuracy of the information. References to square footage or age are approximate. Buyer must verify the information and bears all risk for any inaccuracies. © Beau Box Commercial Real Estate. | May 14, 2021





**400 Canal street  
Jeanerette , LA 70544**

**ADDITIONAL PHOTOS**



Main Warehouse 5 ton Cranes



Front Office Exterior



Rear Warehouse



Main Warehouse



Office and Front Warehouse



Storage Warehouse

**Monty Warren, SIOR**   **Brandon Abdella**  
337.233.1488   337.233.1488  
mwarren@beaubox.com   babdella@beaubox.com

Broker of Record, Beau J. Box; Licensed by the Louisiana Real Estate Commission, Mississippi Real Estate Commission, Alabama Real Estate Commission and Florida Real Estate Commission, USA. This information has been secured from sources we believe to be reliable, but we make no representations or warranties, expressed or implied, as to the accuracy of the information. References to square footage or age are approximate. Buyer must verify the information and bears all risk for any inaccuracies. © Beau Box Commercial Real Estate. | May 14, 2021

