

Property Highlights:

- Approximately 1.02 acre for sale
- Picayune Development Site
- Hard corner with traffic signal
- Total sale price: \$175,000
- Contact agent for more information



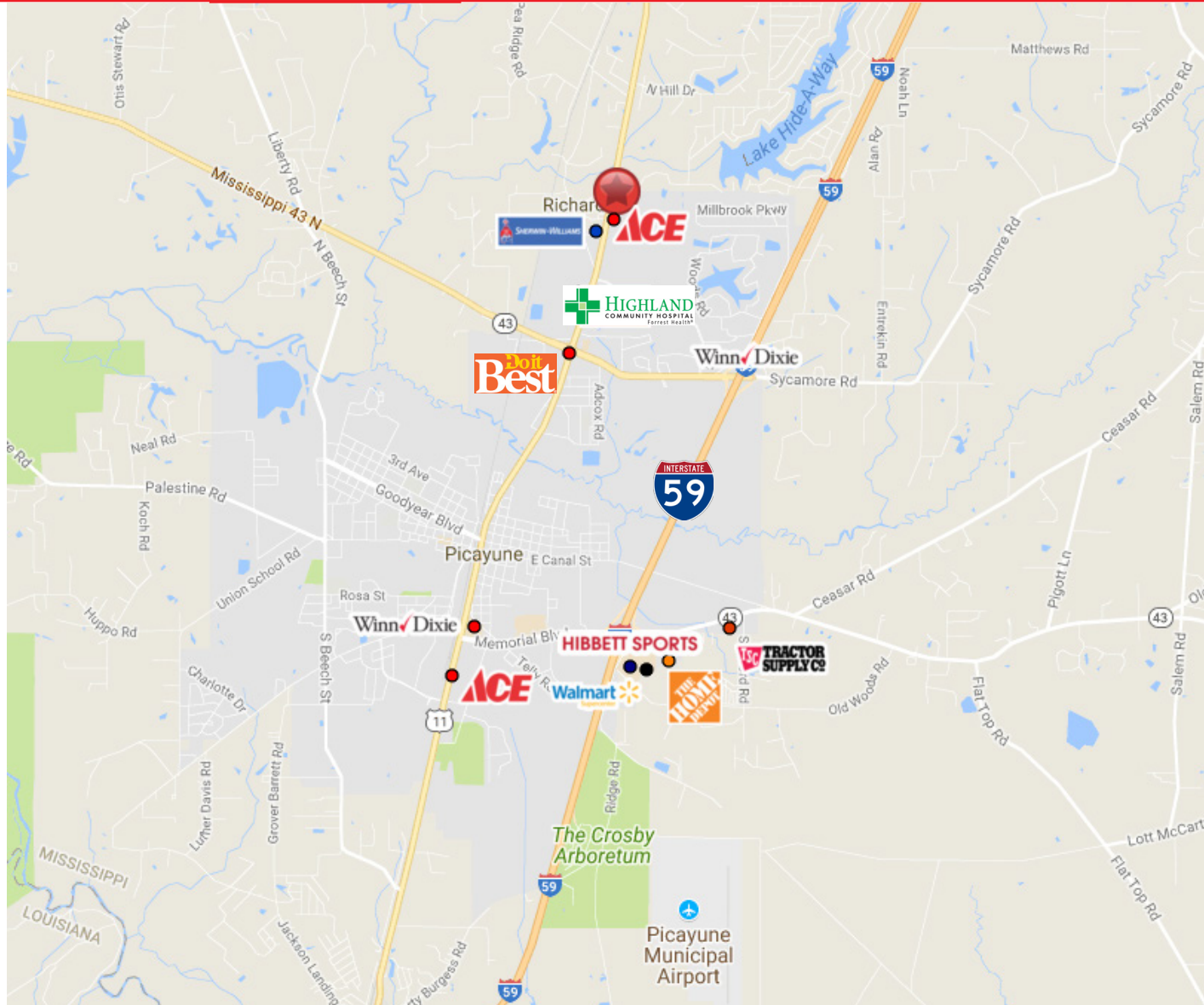
Vacant Land For Sale

Highway 11 at Lakeshore Drive, Picayune, MS 39466

Overview

Aerial

Location



Beau Box

225.237.3343 | bbbox@beaubox.com

5500 Bankers Avenue, Baton Rouge, LA. 70808 | 225.237.3343 | www.beaubox.com

Broker of Record, Beau J. Box; Licensed by the Louisiana Real Estate Commission, Mississippi Real Estate Commission, and Alabama Real Estate Commission, USA. This information has been secured from sources we believe to be reliable, but we make no representations or warranties, expressed or implied, as to the accuracy of the information. References to square footage or age are approximate. Buyer must verify the information and bears all risk for any inaccuracies.

© Beau Box Commercial Real Estate. October 10, 2018 2:54 PM



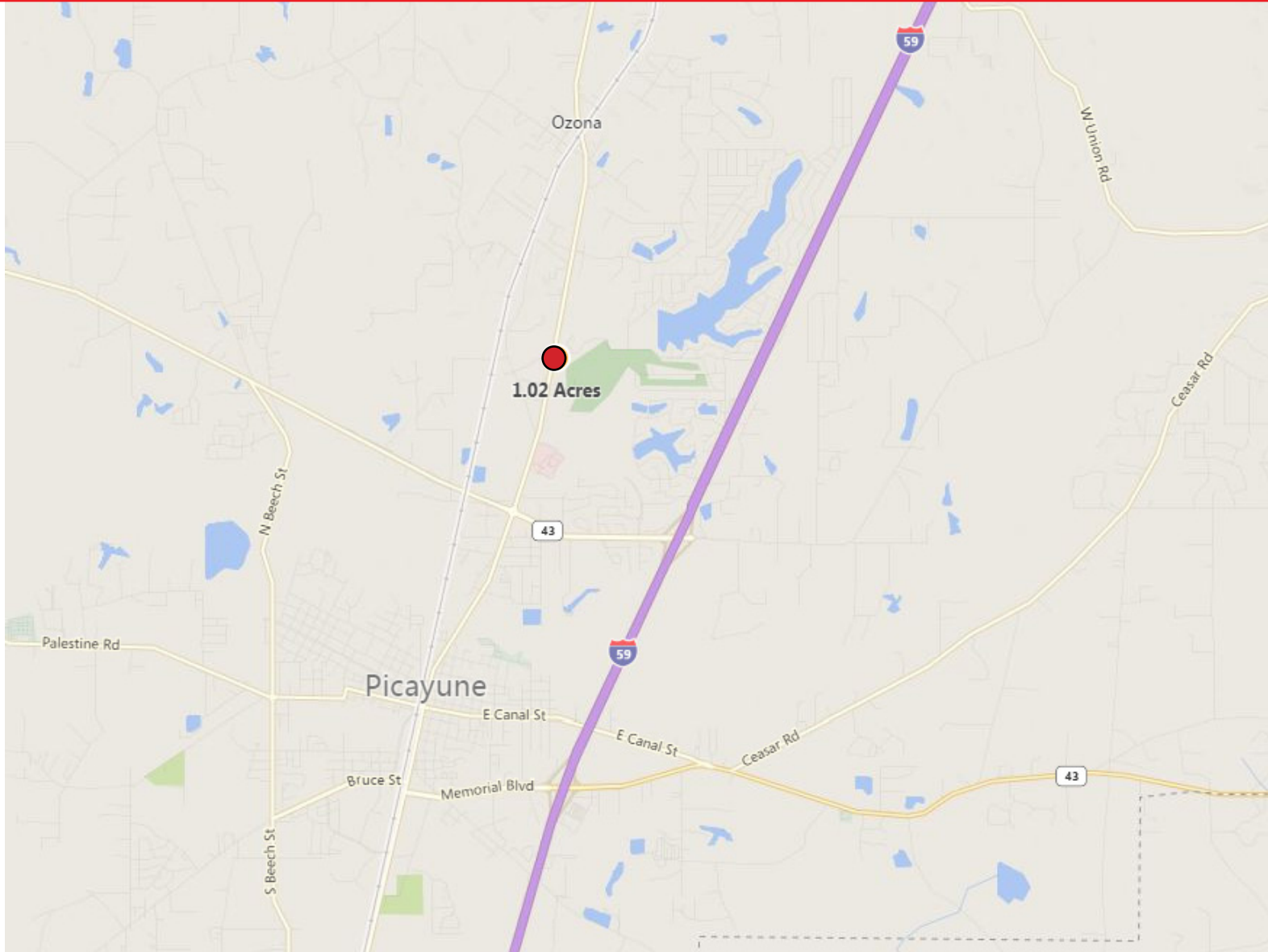
Vacant Land For Sale

Highway 11 at Lakeshore Drive, Picayune, MS 39466

Overview

Aerial

Location



Beau Box

225.237.3343 | bbox@beaubox.com

5500 Bankers Avenue, Baton Rouge, LA. 70808 | 225.237.3343 | www.beaubox.com

Broker of Record, Beau J. Box; Licensed by the Louisiana Real Estate Commission, Mississippi Real Estate Commission, and Alabama Real Estate Commission, USA. This information has been secured from sources we believe to be reliable, but we make no representations or warranties, expressed or implied, as to the accuracy of the information. References to square footage or age are approximate. Buyer must verify the information and bears all risk for any inaccuracies.

© Beau Box Commercial Real Estate. October 10, 2018 2:54 PM