

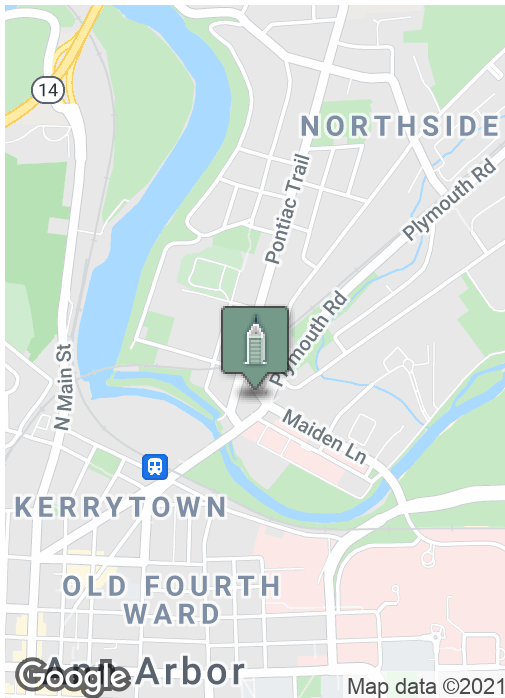
# High-Visibility Retail / Cafe / Service

1031 BROADWAY, ANN ARBOR, MI 48105



**Swisher**  
COMMERCIAL

**FOR SALE**



## SUMMARY

Sale Price:	\$410,000
Lot Size:	0.13 Acres
Building Size:	1,295 SF

## PROPERTY OVERVIEW

High-visibility retail, cafe or service location. Single-story structure with retail showroom/open service area and garage space with two overhead doors. Five on-site parking spaces.

Located where high-traffic Plymouth Road joins Broadway. Historic Lower Town corner within two blocks of UM Medical facilities, neighborhoods, running & biking trails and the Argo Cascades. Two major mixed-use developments coming soon--one in progress across the river and one about to break ground across the river that includes a hotel, condos, event pavilion and green space.

Zoning is C3, one of the most permissive, allowing retail, residential, restaurant, personal services, auto retail sales and repairs and much more.

208 East Washington Street Ann Arbor, MI 48104

734.663.0501

Joe Palms, CCIM  
Michael Giraud

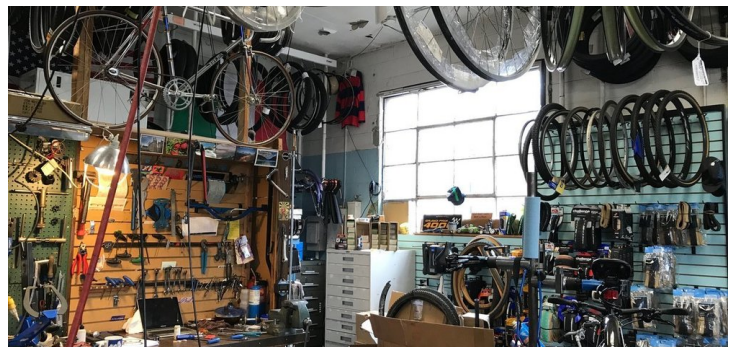
JPALMS@SWISHERCOMMERCIAL.COM  
MGIRAUD@SWISHERCOMMERCIAL.COM

***Building  
relationships.***

SWISHERCOMMERCIAL.COM

# High-Visibility Retail / Cafe / Service

1031 BROADWAY, ANN ARBOR, MI 48105



**Building relationships.**

208 East Washington Street Ann Arbor, MI 48104

734.663.0501

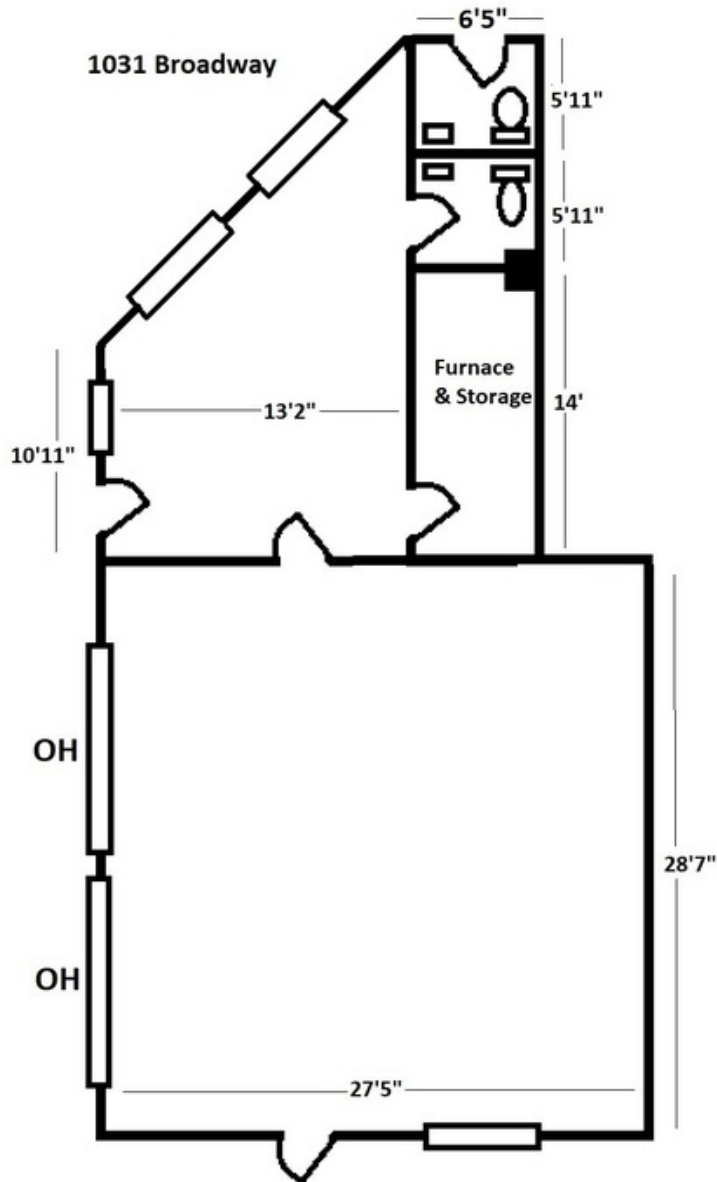
Joe Palms, CCIM  
Michael Giraud

JPALMS@SWISHERCOMMERCIAL.COM  
MGIRAUD@SWISHERCOMMERCIAL.COM

SWISHERCOMMERCIAL.COM

# High-Visibility Retail in Ann Arbor for Sale

1031 BROADWAY, ANN ARBOR, MI 48105



***Building relationships.***

208 East Washington Street Ann Arbor, MI 48104

734.663.0501

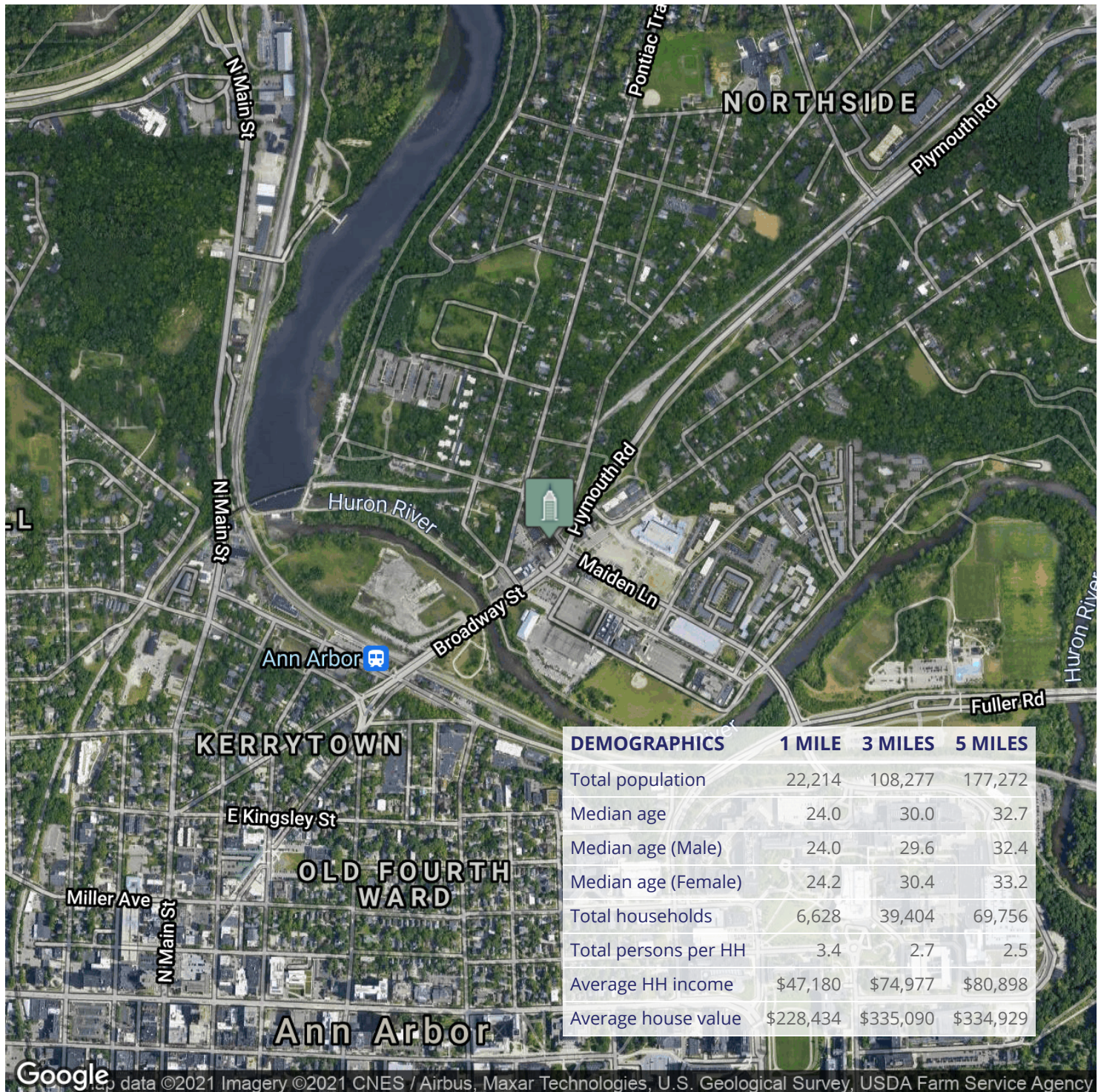
Joe Palms, CCIM  
Michael Giraud

JPALMS@SWISHERCOMMERCIAL.COM  
MGIRAUD@SWISHERCOMMERCIAL.COM

SWISHERCOMMERCIAL.COM

# High-Visibility Retail / Cafe / Service

1031 BROADWAY, ANN ARBOR, MI 48105



Google, data ©2021 Imagery ©2021 CNES / Airbus, Maxar Technologies, U.S. Geological Survey, USDA Farm Service Agency

**Building relationships.**

208 East Washington Street Ann Arbor, MI 48104

734.663.0501

Joe Palms, CCIM  
Michael Giraud

JPALMS@SWISHERCOMMERCIAL.COM  
MGIRAUD@SWISHERCOMMERCIAL.COM

SWISHERCOMMERCIAL.COM