

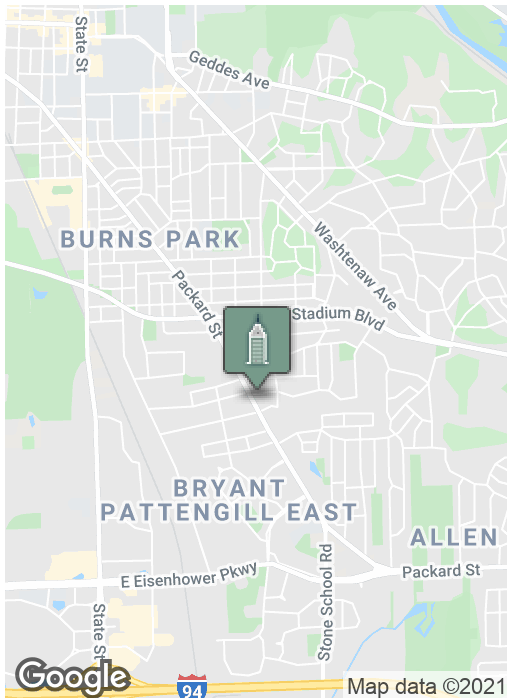
Premium Office Space

2219 PACKARD RD, ANN ARBOR, MI 48104



Swisher
COMMERCIAL

FOR LEASE



SUMMARY

Lease Rate:	\$1,250 per month utilities included
Available SF:	655 SF
Zoning:	OFFICE
Lease Term:	24+ Months

PROPERTY HIGHLIGHTS

- Eastover Professional Center is an eclectic, energetic, well-established condo office building with tenants ranging from financial services to mind and body therapies
- Ideal for a professional office or service
- Crisply finished quiet windowed suite
- Features large open area off wide entrance way
- Two offices and private restroom
- Located on Packard Road between E. Stadium Boulevard and Eastover Street
- Well-kept treed lot, surrounded by residential neighborhoods
- Free at-the-door parking
- Property Tour Video: <https://youtu.be/VZ1SNgqLVWY>

***Building
relationships.***

208 East Washington Street Ann Arbor, MI 48104

734.663.0501

Joe Palms, CCIM

JPALMS@SWISHERCOMMERCIAL.COM

SWISHERCOMMERCIAL.COM

Premium Office for Lease in Ann Arbor

2219 PACKARD RD, ANN ARBOR, MI 48104



***Building
relationships.***

208 East Washington Street Ann Arbor, MI 48104

734.663.0501

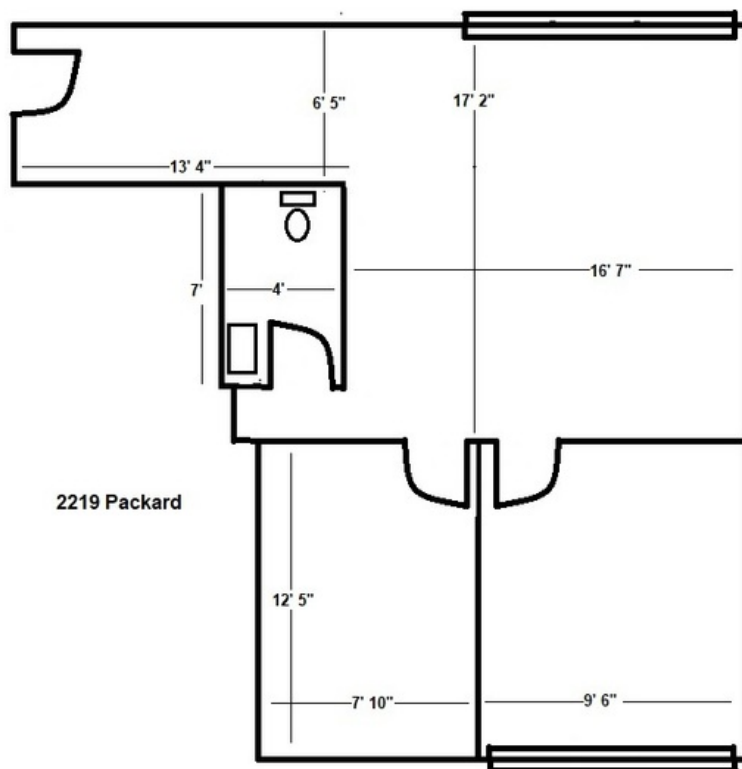
Joe Palms, CCIM

JPALMS@SWISHERCOMMERCIAL.COM

SWISHERCOMMERCIAL.COM

Premium Office for Lease in Ann Arbor

2219 PACKARD RD, ANN ARBOR, MI 48104



Building relationships.

208 East Washington Street Ann Arbor, MI 48104

734.663.0501

Joe Palms, CCIM

JPALMS@SWISHERCOMMERCIAL.COM

SWISHERCOMMERCIAL.COM

Premium Office for Lease in Ann Arbor

2219 PACKARD RD, ANN ARBOR, MI 48104



DEMOGRAPHICS	1 MILE	3 MILES	5 MILES
Total population	12,251	109,723	200,007
Median age	34.3	32.1	32.4
Median age (Male)	34.4	30.0	32.2
Median age (Female)	34.8	30.2	32.7
Total households	5,232	40,989	79,530
Total persons per HH	2.3	2.7	2.5
Average HH income	\$96,109	\$72,405	\$77,809
Average house value	\$363,249	\$344,162	\$320,076

Google
Map data ©2021 Imagery ©2021 Maxar Technologies, U.S. Geological Survey, USDA Farm Service Agency

Building relationships.

208 East Washington Street Ann Arbor, MI 48104

734.663.0501

Joe Palms, CCIM

JPALMS@SWISHERCOMMERCIAL.COM

SWISHERCOMMERCIAL.COM